

РАСАМАМА — BAGLIETTO



Судостроитель: BAGLIETTO

Год постройки: 2015

Модель: Моторная яхта

Цена: **ЦЕНА ЯХТЫ ПО ЗАПРОСУ**

Местонахождение: Italy

Длина общая: 143' 3" (43.65m)

Ширина: 27' 3" (8.30m)

Макс. осадка: 11' 0" (3.35m)

Крейс. скорость: 25 Kts. (29 MPH)

Макс. скорость: 30 Kts. (35 MPH)

Купить **Расамата — BAGLIETTO** а также выбрать подходящую вам яхту из нашего каталога яхт вам поможет опытный яхтенный брокер Андрей Шестаков. На сегодняшний день компания **Shestakov Yacht Sales Inc.** имеет большое количество яхт в собственном списке продаж, а также тесно сотрудничает со всеми крупными яхтенными производителями по всему миру.

Для того чтобы купить яхту **Расамата — BAGLIETTO** а также проконсультироваться по любому вопросу связанному с покупкой, продажей, чартером яхт позвоните по телефону **+7(918)465-66-44**.

ОГЛАВЛЕНИЕ

ОГЛАВЛЕНИЕ	2
ХАРАКТЕРИСТИКИ	4
Обзор	4
Основная информация	4
Размеры	4
Скорость, вместимость и масса	4
Размещение	5
Корпус и палуба	5
Информация о двигателе	5
ПОДРОБНОЕ ОПИСАНИЕ	6
Machinery	6
Other Machinery	6
Accommodations	7
Galley	9
Laundry Room	9
Communications Equipment	9
Navigation Equipment	9
Entertainment Equipment	10
Tenders	10
Deck Equipment	10
Safety & Fire Protection	10
Исключения	11
Отказ от ответственности	11
ФОТОГРАФИИ	12
КОНТАКТЫ	17
Контактная информация	17
Телефоны	17
Время работы	17

Адрес

17

ХАРАКТЕРИСТИКИ

Обзор

PACHAMAMA was designed by Francesco Paszkowski whose brief it was to offer exceptional exterior space, whilst respecting the traditional Baglietto Fast line. Her lines are aggressive, whilst also timeless. PACHAMAMA offers a spacious saloon as well as a comfortable 5 cabin layout for up to 12 guests.

PACHAMAMA is an eye catching yacht that is equally comfortable underway at over 25 knots or at anchor.

Основная информация

Тип судна: Моторная яхта

Подкатегория: Fast

Модельный год: 2015

Год постройки: 2015

Страна: Italy

Размеры

Длина общая: 143' 3" (43.65m)

Ширина: 27' 3" (8.30m)

Макс. осадка: 11' 0" (3.35m)

Скорость, вместимость и масса

Крейс. скорость: 25 Kts. (29 MPH)

Дальность на крейсерской скорости:
700

Макс. скорость: 30 Kts. (35 MPH)

Водоизмещение: 1102311.31 Pounds

Чистый вес: 374 Pounds

Вместимость воды: 1532.1979016
Gallons

Объем топливного бака: 10831.054132
Gallons

Размещение

Всего кают: 5

Всего коек: 12

Спальные места: 12

Койки экипажа: 7

Спальных мест экипажа: 7

Корпус и палуба

Материал корпуса: Aluminum

Материал палубы: Teak

Дизайнер экстерьера: Francesco Paszkowski

Дизайнер интерьера: Francesco Paszkowski

Информация о двигателе

Двигатели: 2

Производитель: MTU

Модель: 16v 4000 M93L

Тип топлива: Diesel

ПОДРОБНОЕ ОПИСАНИЕ

Machinery

GEARBOXES: Two ZF marine reduction gears, type 9055 V with gear ratio 3.208:1

STEERING: Electro hydraulic steering by Opem Sistemi.

STABILIZERS: American Bow Thruster under way and zero speed electro-hydraulic fixed fin stabiliser system.

GENERATORS: Two KOHLER generators - 80kW, 380 V, 50 Hz, 3-phase.

ELECTRICITY: Frequency converter, 90 KVA 50 / 60 Hz 400/230/400 V with a seamless transfer.

SHORE POWER: One shore socket on the aft deck with a 25m cable, a S.E.E. three-phase 125 A 3P+T plug and frequency converter. Shore connections are supplied for the yacht's power (3-phase 400V, 50Hz), one radio/tv, one telephone.

Batteries of 220 Ah 24V for main engines starting.

BATTERIES: Two sets of batteries, of 220 Ah capacity each, for starting the 2 electric generators.

Emergency batteries for all the communication / navigation / light equipment at 24V for appx 6 hours.

AIR CONDITIONING: FRIGOMAR centralised air conditioning with an internal heat exchanger pump system, cooled by sea water. Four compressors with a total capacity of 480,000 BTU. Fresh water is circulated by means of two pumps, one of them in stand by. The temperature is controlled by thermostats fitted in each room. The recycled air circuit is composed of a series of fan-coils, one or more in each room, treating the internal air in order to keep a constant temperature.

Other Machinery

Bow Thruster: An electric bow thruster, made by American Bow Thruster with fixed pitch propeller. Autonomous system of power operating with 380V and thrust not less than 800kg. Control panels in the wheelhouse and flying bridge.

Stern Thruster: An electric hydraulic stern thruster, made by American Bow Thruster with fixed pitch propeller. Control panels in the wheelhouse and flying bridge. Hydraulic power coming from PTO on main propulsion gearboxes.

Trim Control Systems: Two trim tabs aft of the transom. Controlled by the two steering positions through joystick with feedback position. **Fresh Water System:** One centrifugal fresh water pump. Two reverse IDROMAR water makers with a daily capacity of 4,300 litres. Hot water supplied by two 100 litre and two 80 litre electric boilers.

Sewage System & Grey Water System: The black water system consists of a MINI HAMANN stainless steel tank, two vacuum pump jets and vacuum operating WC jets. Grey water tanks in the bilges hold all discharge waters coming from showers, washbasins, bidets and fan coils.

Compressed Air: A 7-bar service air pressure system with one electric driven compressor, check gauge, check valve and automatic switching.

Hydraulic Power Pack Systems: Each power pack is equipped with 2 pumps and all pipes are in AISI 31 6L. **Servicing:** the stabiliser fins, garage stern door and aft lifting device, gangways, rudders system, forward garage door, crane and hydraulic accessories.

Accommodations

Sun Deck:

Forward to starboard is the helm station, whilst to port is a raised bench seat for guests. Aft of this is a large dining table. Further aft is a built-in sofa and free standing deck chairs with ample space aft for sunbathing. The sun deck is very spacious for a vessel of this size.

Main Deck:

The aft deck is mostly covered and features a bench seat aft and tables as well as free standing chairs. The aft deck gives easy access to the bathing platform when the latter is deployed. A stairway to starboard leads up to the sundeck, whilst sliding aft doors open up into the lobby of the saloon.

Once inside the doors, you enter a foyer that is flooded with light descending from the overhead sky lights. To port is a day toilet, a service bar and some storage cabinets. The main saloon extends forward. The saloon is nice and bright and offers plenty of comfortable seating and a large pop up TV.

Forward of the raised pilot house is a separate dining room. This seats 12 comfortably. The galley is just forward of the dining room for ease of service. A large serving hatch can be opened up, so as to allow guests to participate in the cooking or simply facilitate the service.

Lower Deck:

A spectacular staircase leads down to the lower guest accommodation. Aft is the full beam Master suite. The bathroom has a large stall shower, his and hers sinks and a separate WC/bidet cubicle. There is also a walk-in dressing room. A vanity area and a comfortable sofa is found on the starboard side.

Forward of the Owners are the two mirror imaged twin cabins. Both of these have a Pullman, as well as the two single beds, and both have comfortable en-suite facilities.

Just forward of the lower lobby to port is the double VIP suite, once again with full en-suite facilities. To starboard is another twin cabin also with en-suite facilities. Whilst all the cabins are of a contemporary design, they are extremely comfortable and well appointed.

Crew Quarters:

On the main deck forward of the galley is a crew dinette and also a laundry room. There are port and starboard water-tight electrical doors leading onto the side decks for easy crew circulation. To starboard is a stairway that leads down to the crew cabins; this consists of three bunk bedded cabins with en-suites and a separate Captain's cabin also with en-suite. There is accommodation for a total of seven crew.

Galley

- 1 x Professional overhead hood
- 1 x 90 cm Electric oven
- 2 x Microwave ovens
- 2 x Dishwashers
- 1 x Wine-cooler
- 1 x Fridge
- 1 x Cooking top with 2 induction hot plates
- 2 x Gas hot plates
- 1 x Ice maker
- 1 x Fridge undertop

Laundry Room

- 2 x Washing machines
- 2 x Dryers

Communications Equipment

- No 1 SSB by Team Italia
- No 1 EPIRB by Team Italia
- No 1 VHF, with repeater on flying bridge
- Satellite communication system
- Telephone exchange with 4 external lines and 12 internal connections
- Intercom on the fly bridge to communicate with the engine room via headphones

Navigation Equipment

- All equipment supplied by Team Italia
- No 2 Radar

- No 1 Gyrocompass unit
- No 1 Magnetic compass
- No 1 Autopilot system
- No 1 Log system
- No 1 Echosounder

Entertainment Equipment

- Modern entertainment system supplied by Videoworks

Tenders

- 1 x Inflatable main tender
- 1 x Inflatable service tender
- 1 x Jet ski

Deck Equipment

- 2 x MAXWELL electric capstans
- 2 x MAXWELL vertical anchor windlasses
- 2 x Galvanised stud-link anchor chains, 16mm diameter, grade 2, each one 120m
- 2 x Stainless steel anchors, approximately 190kg each
- 10 x Aluminium bollards and 4 x fairleads on the aft deck, fwd deck and sides
- 1 x Electro-hydraulically operated gangway (retractable) with remote control
- 1 x Portable swimming ladder fitted to the aft swimming platform
- 1 x Electro-hydraulic telescopic crane with minimum lifting capacity of 600kg
- 1 x Electro-hydraulic gantry crane for main tender

Safety & Fire Protection

Safety Equipment

- 3 x Self-inflatable life rafts for 10 pax each
- 4 x Life-buoys
- 20 x Life jackets plus 2 for children
- CCTV with 4 cameras

Fire Fighting Equipment

- Main fire fighting system, sea water type with 4 intakes (one at the bow, two on the main deck and one in the engine room)

- Fire alarm system includes fire alarm panels, smoke detectors, thermal detectors, gas detectors and alarm sirens
- Acoustic alarm in engine room that will be activated when fire-fighting gas is released

Исключения

При продаже яхты исключаются личные вещи владельца.

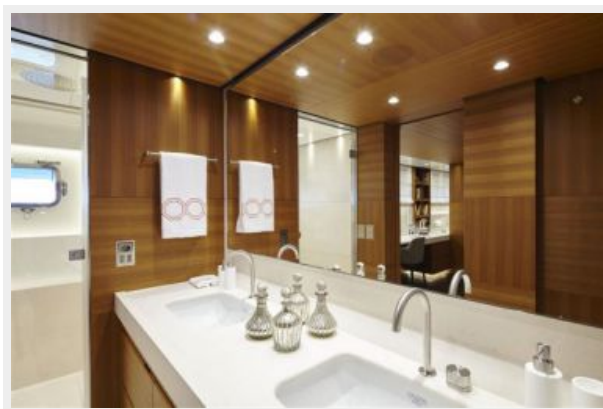
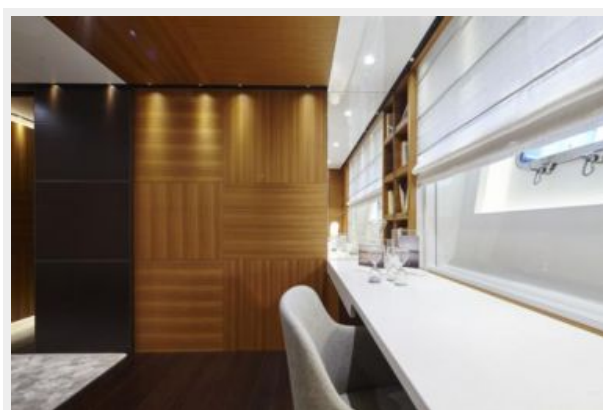
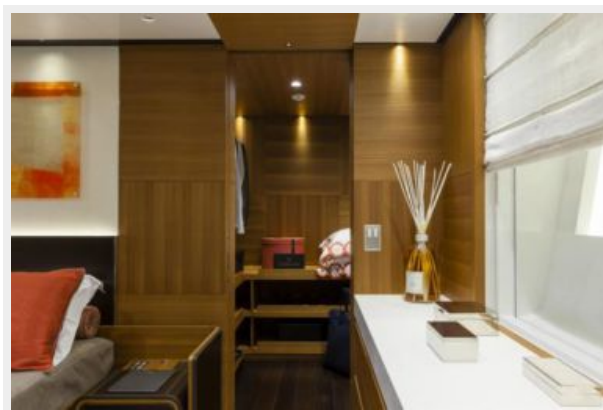
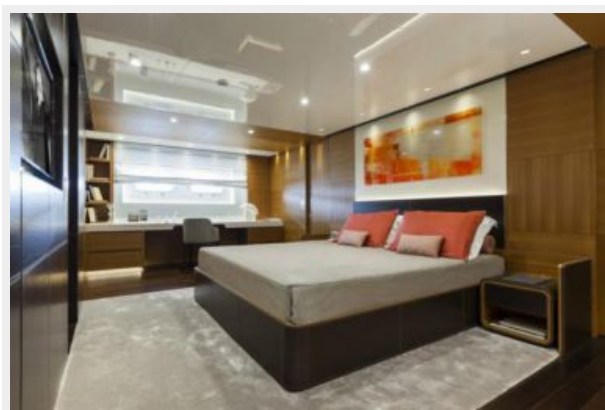
Отказ от ответственности

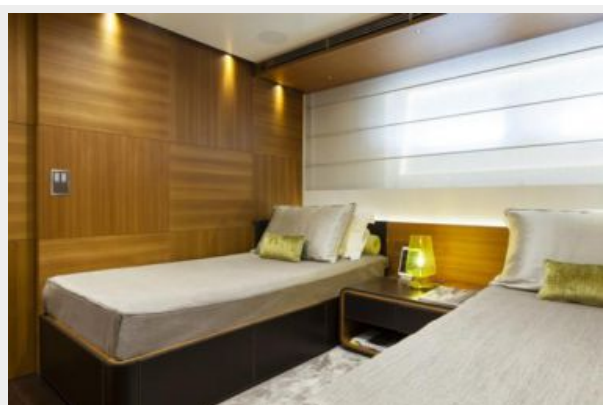
Компания предоставляет описание судна или яхты добросовестно, но не может гарантировать точность этой информации, а также не ручается за техническое состояние. Покупатель должен проинструктировать своих агентов или оценщиков исследовать представленную информацию более подробно, по собственному желанию. Продажа судна или яхты, изменение цены или снятие с продажи будет происходить без предварительного уведомления.

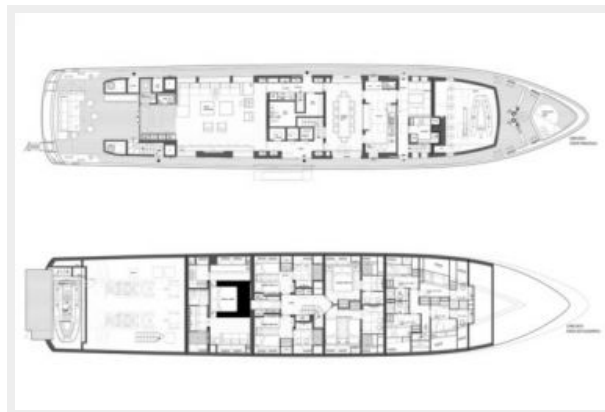
ФОТОГРАФИИ











КОНТАКТЫ

Андрей Шестаков (Andrey Shestakov) – ведущий яхтенный брокер отдела продаж яхт и судов компании Shestakov Yacht Sales Inc. Официальный представитель Shestakov Yacht Sales Inc. для русскоговорящих клиентов в центральном офисе компании в Майами/Форт Лодердейл/Флорида/США.

Контактная информация

Email: andrey@shestakovyachtsales.com

Web: shestakovyachtsales.com

Телефоны

Краснодарский край: **+7(918)465-66-44**

США, Майами, Флорида: **+1(954)274-4435**

Время работы

Понедельник – Суббота: **9:00 - 21:00**
EDT

Воскресенье: **Закрито**

Адрес



Harbour Towne Marina, 850 NE 3rd St,
STE 213, Dania, FL 33004