

## DOA — BROWARD



**Builder:** BROWARD

**Year Built:** 1990

**Model:** Motor Yacht

**Price:** PRICE ON APPLICATION

**Location:** Thailand

**LOA:** 121' 5" (37.00m)

**Max Draft:** 6' 6" (1.98m)

**Cruise Speed:** 12 Kts. (14 MPH)

**Max Speed:** 15 Kts. (17 MPH)

Our experienced yacht broker, Andrey Shestakov, will help you choose and buy a yacht that best suits your needs **DOA — BROWARD** from our catalogue. Presently, at Shestakov Yacht Sales Inc., we have a wide variety of yachts available on our sale's list. We also work in close contact with all the big yacht manufacturers from all over the world.

If you would like to buy a yacht **DOA — BROWARD** or would like help answering any questions concerning purchasing, selling or chartering a yacht, please call **+1(954)274-4435**

# TABLE OF CONTENTS

TABLE OF CONTENTS	2
SPECIFICATIONS	3
Overview	3
Basic Information	3
Dimensions	3
Speed, Capacities and Weight	3
Accommodations	3
Hull and Deck Information	3
Engine Information	4
DETAILED INFORMATION	5
Description	5
Accommodations	5
MACHINERY	5
Deck Equipment	6
SECURITY, FIRE FIGHTING & SAFETY EQUIPMENT	6
Communications, Navigation and Entertainment System	6
Galley & Laundry Equipment	7
Tenders	7
Exclusions	7
Disclaimer	8
PHOTOS	9
CONTACTS	13
Contact details	13
Telephones	13
Office hours	13
Address	13

---

# SPECIFICATIONS

---

## Overview

---

DOA was constructed in 1990 by Broward Yachts and has an aluminum hull and superstructure designed by naval architect Tim Dillenbeck.

## Basic Information

---

**Category:** Motor Yacht

**Model Year:** 1990

**Year Built:** 1990

**Refit Year:** 2011

**Country:** Thailand

**Fly Bridge:** Yes

## Dimensions

---

**LOA:** 121' 5" (37.00m)

**Max Draft:** 6' 6" (1.98m)

## Speed, Capacities and Weight

---

**Cruise Speed:** 12 Kts. (14 MPH)

**Max Speed:** 15 Kts. (17 MPH)

**Gross Tonnage:** 170 Pounds

## Accommodations

---

**Total Cabins:** 5

**Sleeps:** 10

## Hull and Deck Information

---

**Hull Material:** Aluminum

---

## Engine Information

---

**Engines:** 2

**Manufacturer:** Detroit Diesel

**Model:** 16V92, 1,450 Hp each

---

# DETAILED INFORMATION

---

## Description

---

The Motor Yacht DOA is fully equipped for charter or private use with plenty of tenders and toys. She comes with a 31' sportfish tender, 18 inflatable, 2 waverunners and much more. The interior has a large open reception area along with very spacious decks on the exterior. On the top deck there is a very large 8 person Jacuzzi and plenty of sun pads for taking in the beautiful view. The accommodations are right in line with the exterior comfort with a full beam Master, two queen and two twin guest cabins. DOA blends luxury and beauty at very very attractive price.

## Accommodations

---

Entering the MAIN SALON through the aft doors you will enjoy superb panoramic views in almost every direction provided by the full height windows in both doors and the large Salon windows to port and starboard. On the port side, there is a large wrap around bar fully equipped with icemaker, refrigeration and comfortable bar type seating. On the starboard aft corner, there is the companionway leading to the four guest staterooms below. Just forward of that on the starboard side is a large wrap around settee with cocktail table and matching chairs. Forward of that is a buffet and china cabinet separating the DINING AREA from the salon area. The DINING AREA will easily seat eight for formal dining. The PILOTHOUSE is amidships and is slightly raised and entered from the starboard side. It is finished in silver leather and includes some of the most advanced systems available. The primary access to the flybridge is from the pilothouse, a secondary access is from the aft deck. Moving forward on the main deck just forward of the pilothouse, you have a MAIN DECK POWDER ROOM. Continuing forward you will enter the very spacious country kitchen styled gourmet GALLEY with full over and under cabinetry, a very large "island" center counter and a walk-in pantry. This area is very bright and cheerful and is one of the highlights of the vessel. Moving forward and down stairs are the CAPTAINS and CREW QUARTERS, which are comprised of two double staterooms. There are additional staterooms with over and under berths, two heads and two showers. The MASTER STATEROOM is entered amidships from the main deck via a private staircase. It is very large with a king sized bed, self-contained music and entertainment center as well as a Broward Trademark his and hers heads flanking a Jacuzzi tub. There are his and hers walk-in closets, both port and starboard. The GUEST ACCOMMODATIONS are also reached from a companionway on the main deck, which opens into four guest staterooms, two with queen berths and ensuite heads and two with twin berths and ensuite heads. There is also a laundry facility in this area.

## MACHINERY

---

MAIN ENGINES ENGINE TYPE: (2) Detroit Diesel 16V92, 1,450 Hp each. Port 175 hours;

starboard 1,200 hours.

GENERATORS & ELECTRICITY GENERATORS: 1 x 65 kW Northern Lights (2005), 1 x 65 kW Kilopac (2007), 24v 80amp-Professional Mariner battery charger below pilothouse, 24v main engine alternators on each engine, 24v alternators on each generator, 12v,40 amp Professional Mariner battery charger in engine room

BATTERIES: (6) 12v 200 AH (4) batteries for main engines, (2) for generators and house system

SHORE POWER: (2) 60 KVA Atlas shore power transformers (2005), 220V/110V shore power 100-amp, 3-phase Shore power cords

AIR CONDITIONING TYPE: (3) 5 tons Rich Beers Chilled Water system All new marine air - air handlers (2006)

OTHER MACHINERY WATERMAKERS: Offshore Marine Labs, (2) independent systems, each capable of 1500 gallons/day

TRIM / TABS STABILIZERS: Naiad Fin stabilizers Bow Thruster: 80 H.P. American Bow Thruster

FUEL FILTRATION: Racor triple fuel filter on Main Engines. Generators have one primary Racor fuel filter and one secondary fuel filter

AIR COMPRESSOR: (2) independent Dayton Speedaire Model 327838

HOT WATERS HEATERS: (3) 240v, each 40 gallon with hot water circulating pump

## Deck Equipment

---

ANCHORS: 375lb Navy type with freshwater washdown DECK CAPSTANS: (2) Ideal vertical Capstan mooring winches aft deck, electric BOAT CRANE AND DAVITS: (3)

ACCOMMODATION LADDERS: Marquipt Sea Stairs with teak handrails OTHER: Hot tub in 2000, New deck cushions on flybridge, forward and aft deck 2009

## SECURITY, FIRE FIGHTING & SAFETY EQUIPMENT

---

Security Equipment CCTV System: ELBEX (engine room and pilothouse) FM200 Fire System Safety Equipment Life Rafts: (2) 10 Person Elliot life rafts, inspected annually.

## Communications, Navigation and Entertainment System

---

COMMUNICATION SYSTEMS: SATcom: Imarsat M Telephone System: Toshiba telecommunications system with 14 on board stations with cellular, fax and SatCom interface,

SSB: Stephens 322, VHF: SEA and DSC ICOM, Navigation Systems Radar: (2) 96 mile Furuno 1510 radars (one with plotter and ARPA), Gyrocompass: Sperry Autopilot w/Northstar interface, GPS: Northstar 800 GPS/Loran, Furuno Navnet, Standard Horizon, Furuno A15, Navigation Instruments: Brookes & Gatehouse depth, speed indicator & wind indicators w/Datamarine backup

NAV: Nobletech Chart Software and Furuno Navnet ENTERTAINMENT SYSTEM: Upgraded Worldwide TV's and DVD's throughout with Apple RV's and server AUDIO EQUIPMENT: Sony stereo /CD player (engine room, pilothouse, guest cabins, galley and crew cabins). Sony DVD and stereo receiver (master cabin) - Seatel 4003 VSAT

---

## Galley & Laundry Equipment

---

MAIN GALLERY EQUIPMENT: (2) Kitchenaid Over/Under ovens Whirlpool side by side 27 cu. ft. refrigerator w/freezer Fridge-Air 20 cu. ft. chest freezer KitchenAid Hotscrub dishwasher Kitchen Aid garbage disposal ADDITIONAL APPLIANCES: (1) Jennaire grill (flybridge) (5) Sub Zero under counter refrigerators located throughout boat (3) Sub Zero under counter icemakers

LAUNDRY EQUIPMENT: (2) Westinghouse stacking clothes washers & dryers

---

## Tenders

---

5.18m / 18' Novurania w/90hp

### TOYS

- (2) 2006 3-person 1300 Seadoos
- Extensive Snorkel gear
- Rendezvous scuba diving only
- Water skis
- Slalom ski
- Wakeboards
- Wake skate
- (2) 2-person kayaks
- Super Mable
- Mini Mable
- 20' trampoline
- 5 pax banana tube
- 8-10 person Jacuzzi

---

## Exclusions

---

Owner's personal belongings.

## Disclaimer

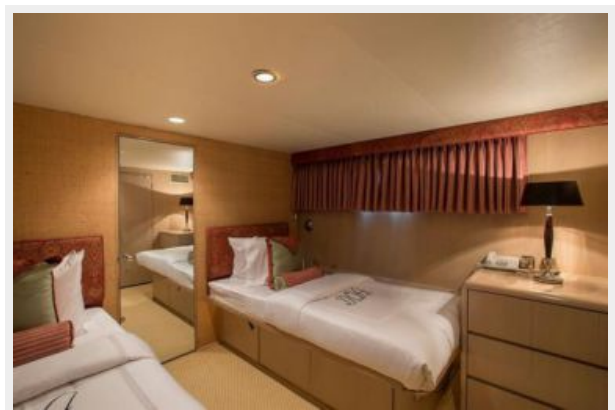
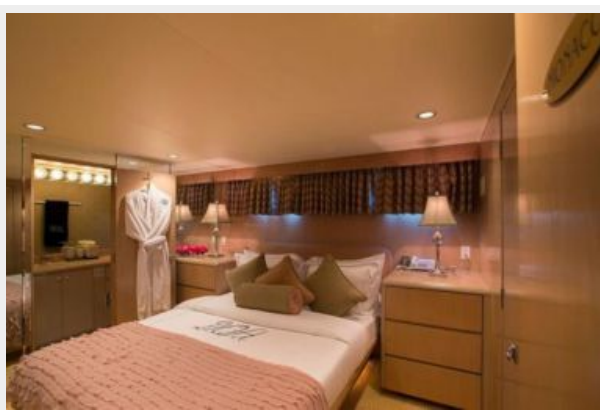
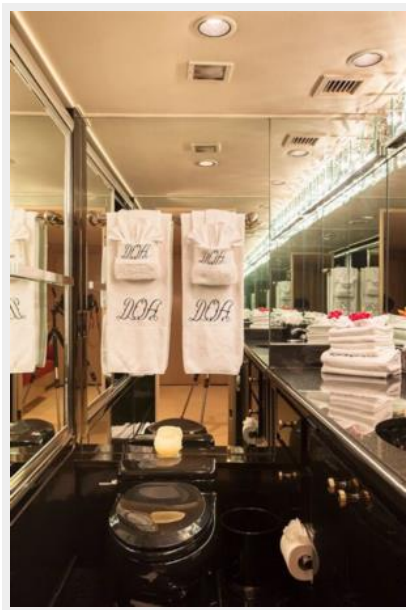
---

The Company offers the details of this vessel or yacht in good faith but cannot guarantee or warrant the accuracy of this information nor warrant the condition of the vessel. A buyer should instruct his representatives, agents, or his surveyors, to investigate such details as the buyer desires validated. This vessel or yacht is offered subject to prior sale, price change, or withdrawal without notice.

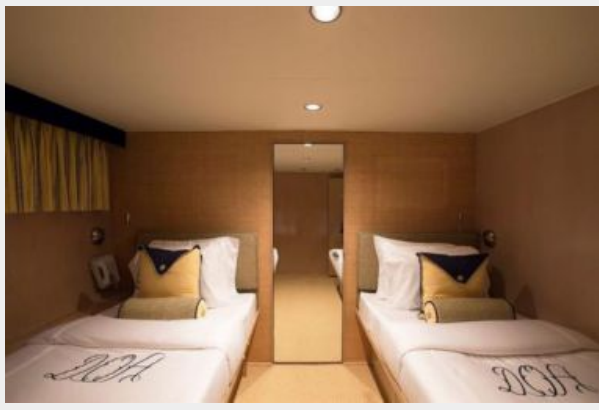


# PHOTOS











# CONTACTS

---

Andrey Shestakov, leading yacht broker of the sales department of Shestakov Yacht Sales Inc. Shestakov Yacht Sales Inc., the official representative of the Miami/Fort Lauderdale FL headquarters.

## Contact details

---

Email:  
**andrey@shestakovyachtsales.com**

Web: [shestakovyachtsales.com/en/](http://shestakovyachtsales.com/en/)

## Telephones

---

USA: **+1(954)274-4435**

## Office hours

---

Monday – Saturday: **9:00 - 21:00** EDT

Sunday: **closed**

## Address

---



Harbour Towne Marina, 850 NE 3rd St,  
STE 213, Dania, FL 33004