

DOA — BROWARD



Судостроитель: BROWARD

Год постройки: 1990

Модель: Моторная яхта

Цена: **ЦЕНА ЯХТЫ ПО ЗАПРОСУ**

Местонахождение: Thailand

Длина общая: 121' 5" (37.00m)

Макс. осадка: 6' 6" (1.98m)

Крейс. скорость: 12 Kts. (14 MPH)

Макс. скорость: 15 Kts. (17 MPH)

Купить **DOA — BROWARD** а также выбрать подходящую вам яхту из нашего каталога яхт вам поможет опытный яхтенный брокер Андрей Шестаков. На сегодняшний день компания **Shestakov Yacht Sales Inc.** имеет большое количество яхт в собственном списке продаж, а также тесно сотрудничает со всеми крупными яхтенными производителями по всему миру.

Для того чтобы купить яхту **DOA — BROWARD** а также проконсультироваться по любому вопросу связанному с покупкой, продажей, чартером яхт позвоните по телефону **+7(918)465-66-44**.

ОГЛАВЛЕНИЕ

| | |
|---|----|
| ОГЛАВЛЕНИЕ | 2 |
| ХАРАКТЕРИСТИКИ | 3 |
| Обзор | 3 |
| Основная информация | 3 |
| Размеры | 3 |
| Скорость, вместимость и масса | 3 |
| Размещение | 3 |
| Корпус и палуба | 3 |
| Информация о двигателе | 4 |
| ПОДРОБНОЕ ОПИСАНИЕ | 5 |
| Description | 5 |
| Accommodations | 5 |
| MACHINERY | 5 |
| Deck Equipment | 6 |
| SECURITY, FIRE FIGHTING & SAFETY EQUIPMENT | 6 |
| Communications, Navigation and Entertainment System | 6 |
| Galley & Laundry Equipment | 7 |
| Tenders | 7 |
| Исключения | 7 |
| Отказ от ответственности | 8 |
| ФОТОГРАФИИ | 9 |
| КОНТАКТЫ | 13 |
| Контактная информация | 13 |
| Телефоны | 13 |
| Время работы | 13 |
| Адрес | 13 |

ХАРАКТЕРИСТИКИ

Обзор

DOA was constructed in 1990 by Broward Yachts and has an aluminum hull and superstructure designed by naval architect Tim Dillenbeck.

Основная информация

Тип судна: Моторная яхта

Модельный год: 1990

Год постройки: 1990

Год обновления: 2011

Страна: Thailand

Открытая палуба мостика: Да

Размеры

Длина общая: 121' 5" (37.00m)

Макс. осадка: 6' 6" (1.98m)

Скорость, вместимость и масса

Крейс. скорость: 12 Kts. (14 MPH)

Макс. скорость: 15 Kts. (17 MPH)

Чистый вес: 170 Pounds

Размещение

Всего кают: 5

Спальные места: 10

Корпус и палуба

Материал корпуса: Aluminum

Информация о двигателе

Двигатели: 2

Производитель: Detroit Diesel

Модель: 16V92, 1,450 Hp each

ПОДРОБНОЕ ОПИСАНИЕ

Description

The Motor Yacht DOA is fully equipped for charter or private use with plenty of tenders and toys. She comes with a 31' sportfish tender, 18 inflatable, 2 waverunners and much more. The interior has a large open reception area along with very spacious decks on the exterior. On the top deck there is a very large 8 person Jacuzzi and plenty of sun pads for taking in the beautiful view. The accommodations are right in line with the exterior comfort with a full beam Master, two queen and two twin guest cabins. DOA blends luxury and beauty at very very attractive price.

Accommodations

Entering the MAIN SALON through the aft doors you will enjoy superb panoramic views in almost every direction provided by the full height windows in both doors and the large Salon windows to port and starboard. On the port side, there is a large wrap around bar fully equipped with icemaker, refrigeration and comfortable bar type seating. On the starboard aft corner, there is the companionway leading to the four guest staterooms below. Just forward of that on the starboard side is a large wrap around settee with cocktail table and matching chairs. Forward of that is a buffet and china cabinet separating the DINING AREA from the salon area. The DINING AREA will easily seat eight for formal dining. The PILOTHOUSE is amidships and is slightly raised and entered from the starboard side. It is finished in silver leather and includes some of the most advanced systems available. The primary access to the flybridge is from the pilothouse, a secondary access is from the aft deck. Moving forward on the main deck just forward of the pilothouse, you have a MAIN DECK POWDER ROOM. Continuing forward you will enter the very spacious country kitchen styled gourmet GALLEY with full over and under cabinetry, a very large "island" center counter and a walk-in pantry. This area is very bright and cheerful and is one of the highlights of the vessel. Moving forward and down stairs are the CAPTAINS and CREW QUARTERS, which are comprised of two double staterooms. There are additional staterooms with over and under berths, two heads and two showers. The MASTER STATEROOM is entered amidships from the main deck via a private staircase. It is very large with a king sized bed, self-contained music and entertainment center as well as a Broward Trademark his and hers heads flanking a Jacuzzi tub. There are his and hers walk-in closets, both port and starboard. The GUEST ACCOMMODATIONS are also reached from a companionway on the main deck, which opens into four guest staterooms, two with queen berths and ensuite heads and two with twin berths and ensuite heads. There is also a laundry facility in this area.

MACHINERY

MAIN ENGINES ENGINE TYPE: (2) Detroit Diesel 16V92, 1,450 Hp each. Port 175 hours;

starboard 1,200 hours.

GENERATORS & ELECTRICITY GENERATORS: 1 x 65 kW Northern Lights (2005), 1 x 65 kW Kilopac (2007), 24v 80amp-Professional Mariner battery charger below pilothouse, 24v main engine alternators on each engine, 24v alternators on each generator, 12v,40 amp Professional Mariner battery charger in engine room

BATTERIES: (6) 12v 200 AH (4) batteries for main engines, (2) for generators and house system

SHORE POWER: (2) 60 KVA Atlas shore power transformers (2005), 220V/110V shore power 100-amp, 3-phase Shore power cords

AIR CONDITIONING TYPE: (3) 5 tons Rich Beers Chilled Water system All new marine air - air handlers (2006)

OTHER MACHINERY WATERMAKERS: Offshore Marine Labs, (2) independent systems, each capable of 1500 gallons/day

TRIM / TABS STABILIZERS: Naiad Fin stabilizers Bow Thruster: 80 H.P. American Bow Thruster

FUEL FILTRATION: Racor triple fuel filter on Main Engines. Generators have one primary Racor fuel filter and one secondary fuel filter

AIR COMPRESSOR: (2) independent Dayton Speedaire Model 327838

HOT WATERS HEATERS: (3) 240v, each 40 gallon with hot water circulating pump

Deck Equipment

ANCHORS: 375lb Navy type with freshwater washdown DECK CAPSTANS: (2) Ideal vertical Capstan mooring winches aft deck, electric BOAT CRANE AND DAVITS: (3)

ACCOMMODATION LADDERS: Marquipt Sea Stairs with teak handrails OTHER: Hot tub in 2000, New deck cushions on flybridge, forward and aft deck 2009

SECURITY, FIRE FIGHTING & SAFETY EQUIPMENT

Security Equipment CCTV System: ELBEX (engine room and pilothouse) FM200 Fire System Safety Equipment Life Rafts: (2) 10 Person Elliot life rafts, inspected annually.

Communications, Navigation and Entertainment System

COMMUNICATION SYSTEMS: SATcom: Imarsat M Telephone System: Toshiba telecommunications system with 14 on board stations with cellular, fax and SatCom interface,

SSB: Stephens 322, VHF: SEA and DSC ICOM, Navigation Systems Radar: (2) 96 mile Furuno 1510 radars (one with plotter and ARPA), Gyrocompass: Sperry Autopilot w/Northstar interface, GPS: Northstar 800 GPS/Loran, Furuno Navnet, Standard Horizon, Furuno A15, Navigation Instruments: Brookes & Gatehouse depth, speed indicator & wind indicators w/Datamarine backup

NAV: Nobletech Chart Software and Furuno Navnet ENTERTAINMENT SYSTEM: Upgraded Worldwide TV's and DVD's throughout with Apple RV's and server AUDIO EQUIPMENT: Sony stereo /CD player (engine room, pilothouse, guest cabins, galley and crew cabins). Sony DVD and stereo receiver (master cabin) - Seatel 4003 VSAT

Galley & Laundry Equipment

MAIN GALLERY EQUIPMENT: (2) Kitchenaid Over/Under ovens Whirlpool side by side 27 cu. ft. refrigerator w/freezer Fridge-Air 20 cu. ft. chest freezer KitchenAid Hotscrub dishwasher Kitchen Aid garbage disposal ADDITIONAL APPLIANCES: (1) Jennaire grill (flybridge) (5) Sub Zero under counter refrigerators located throughout boat (3) Sub Zero under counter icemakers

LAUNDRY EQUIPMENT: (2) Westinghouse stacking clothes washers & dryers

Tenders

5.18m / 18' Novurania w/90hp

TOYS

- (2) 2006 3-person 1300 Seadoos
- Extensive Snorkel gear
- Rendezvous scuba diving only
- Water skis
- Slalom ski
- Wakeboards
- Wake skate
- (2) 2-person kayaks
- Super Mable
- Mini Mable
- 20' trampoline
- 5 pax banana tube
- 8-10 person Jacuzzi

Исключения

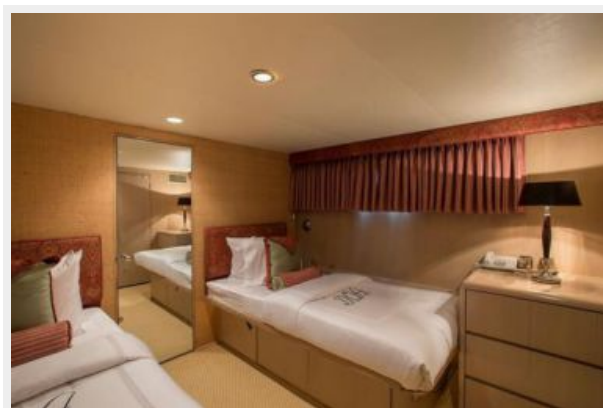
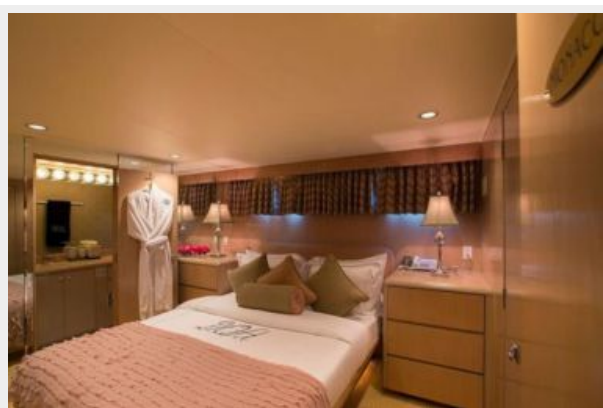
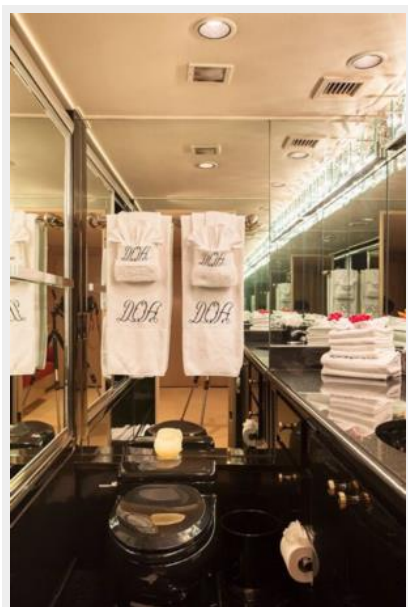
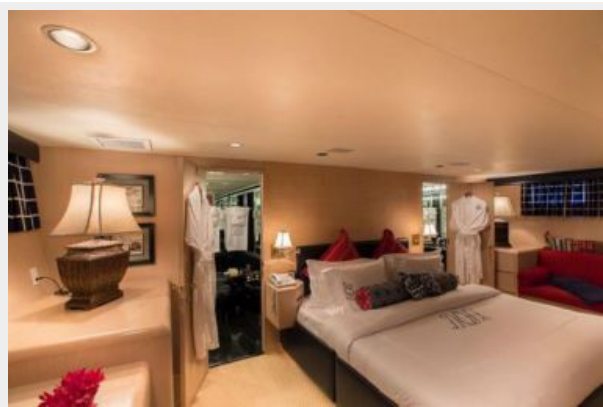
При продаже яхты исключаются личные вещи владельца.

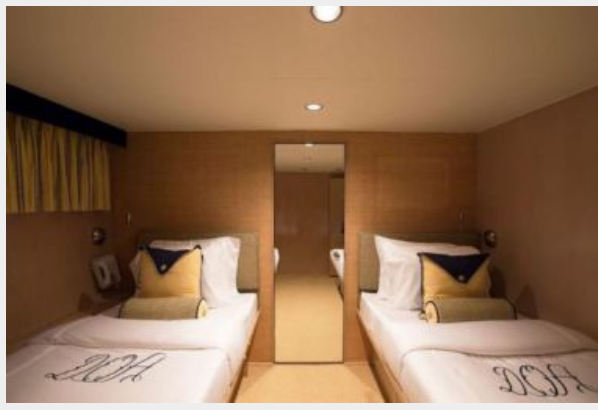
Отказ от ответственности

Компания предоставляет описание судна или яхты добросовестно, но не может гарантировать точность этой информации, а также не ручается за техническое состояние. Покупатель должен проинструктировать своих агентов или оценщиков исследовать представленную информацию более подробно, по собственному желанию. Продажа судна или яхты, изменение цены или снятие с продажи будет происходить без предварительного уведомления.

ФОТОГРАФИИ









КОНТАКТЫ

Андрей Шестаков (Andrey Shestakov) – ведущий яхтенный брокер отдела продаж яхт и судов компании Shestakov Yacht Sales Inc. Официальный представитель Shestakov Yacht Sales Inc. для русскоговорящих клиентов в центральном офисе компании в Майами/Форт Лодердейл/Флорида/США.

Контактная информация

Email: andrey@shestakovyachtsales.com

Web: shestakovyachtsales.com

Телефоны

Краснодарский край: **+7(918)465-66-44**

США, Майами, Флорида: **+1(954)274-4435**

Время работы

Понедельник – Суббота: **9:00 - 21:00**
EDT

Воскресенье: **Закрето**

Адрес



Harbour Towne Marina, 850 NE 3rd St,
STE 213, Dania, FL 33004