

MR. LOUI — HATTERAS



Судостроитель: HATTERAS

Год постройки: 2014

Модель: Моторная яхта

Цена: ЦЕНА ЯХТЫ ПО ЗАПРОСУ

Местонахождение: United States

Длина общая: 102' 0" (31.09m)

Ширина: 22' 6" (6.86m)

Мин. осадка: 5' 11" (1.80m)

Макс. осадка: 6' 2" (1.88m)

Крейс. скорость: 19 Kts. (22 MPH)

Макс. скорость: 25 Kts. (29 MPH)

Купить **MR. LOUI — HATTERAS** а также выбрать подходящую вам яхту из нашего каталога яхт вам поможет опытный яхтенный брокер Андрей Шестаков. На сегодняшний день компания **Shestakov Yacht Sales Inc.** имеет большое количество яхт в собственном списке продаж, а также тесно сотрудничает со всеми крупными яхтенными производителями по всему миру.

Для того чтобы купить яхту **MR. LOUI — HATTERAS** а также проконсультироваться по любому вопросу связанному с покупкой, продажей, чартером яхт позвоните по телефону **+7(918)465-66-44**.

ОГЛАВЛЕНИЕ

ОГЛАВЛЕНИЕ	2
ХАРАКТЕРИСТИКИ	3
Обзор	3
Основная информация	3
Размеры	3
Скорость, вместимость и масса	3
Размещение	4
Корпус и палуба	4
Информация о двигателе	4
ПОДРОБНОЕ ОПИСАНИЕ	5
FEATURES & STANDARD EQUIPMENT	5
Generators	8
Исключения	9
Отказ от ответственности	9
ФОТОГРАФИИ	10
КОНТАКТЫ	15
Контактная информация	15
Телефоны	15
Время работы	15
Адрес	15

ХАРАКТЕРИСТИКИ

Обзор

OWNER IS READY TO SELL!

Основная информация

Тип судна: Моторная яхта

Подкатегория: Raised Pilothouse

Модельный год: 2014

Год постройки: 2014

Страна: United States

Верх: Hardtop

Кубрик: Да

Размеры

Длина общая: 102' 0" (31.09m)

Ширина: 22' 6" (6.86m)

Мин. осадка: 5' 11" (1.80m)

Макс. осадка: 6' 2" (1.88m)

Трапы: 22' 9" (6.93m)

Скорость, вместимость и масса

Крейс. скорость: 19 Kts. (22 MPH)

Макс. скорость: 25 Kts. (29 MPH)

Водоизмещение: 270000 Pounds

Вместимость воды: 840 Gallons

Вместимость сточного бака: 420 Gallons Объем топливного бака: 4700 Gallons

Размещение

Всего кают: 4

Всего коек: 6

Спальные места: 10

Всего ком. состава: 5

Каюты экипажа: 2

Койки экипажа: 3

Спальных мест экипажа: 3

Комм. состав экипажа: 2

Корпус и палуба

Материал корпуса: Fiberglass

Информация о двигателе

Двигатели: 2

Производитель: Caterpillar

Модель: C32A

Тип двигателя: Inboard

Тип топлива: Diesel

ПОДРОБНОЕ ОПИСАНИЕ

FEATURES & STANDARD EQUIPMENT

Exterior Finish & Construction • Isophthalic / NPG gel coat, exterior layer • Hull and superstructure painted with a premium linear polyester/polyurethane coating for improved cosmetics and increased durability • Polymer/copper based anti-fouling bottom paint • Boot stripe, linear polyester/urethane coating • Decks, non-skid surface, polyurethane paint with polymeric beads • Solid fiberglass hull bottom with premium vinylester resin and blister resistant gel coat below the waterline • Resin-infused composite hull sides with crosslinked foam core and premium vinylester resin • Molded fiberglass longitudinal stringers with steel engine beds • Resin-infused bulkheads and interior decks using crosslinked foam core

Hardware & Miscellaneous • Interior wood selections available in Wenge, European Walnut, Natural Walnut, Mahogany and Rift Cut White Oak. Selections are hand-crafted with a satin finish. • Port and starboard anchor hawsers with anchor chutes, mooring bits, and oversized anchor chafe plates in stainless steel. • Dual 350 lb stainless-steel anchors • Dual 6,000 lb hydraulic windlasses with deck mounted foot-type control switches and 350 feet of hot-dipped galvanized chain (each side) • Freshwater anchor wash in chutes • Hydraulic 55 HP bow thruster and 45 HP stern thruster with integrated zero speed stabilizer system • Hydraulic backup pump for integrated thrusters and stabilizers • Four polished stainless steel spring cleats with chafing strips, stainless steel bow cleats, and stern cleats, through bolted in aluminum backing plates (2) • Welded and polished stainless steel bow and flybridge rails - drilled and tapped in aluminum backing plates • Fog bell • Dual air horns powered by ship air compressor • Zincs on rudders and shafts • Alloy 22 high strength propeller shafts • Manganese bronze dripless rudder seals • Dripless shaft seals • Two 8 person life rafts with hydrostatic release on boat deck • Portable “drychem” fire extinguishers in compliance with United States Coast Guard and ABYC standards • Portable 13 lb Halotron-1 fire extinguishers throughout • Manganese bronze struts • Bronze rudders • Propellers, Nibral high performance • Sea stairs with dedicated storage • Walk around side decks • Bow lounge seat • Central vacuum system • Freshwater wash down outlet, bow • Stainless steel deck plates for fuel fill, water fill, and waste pump-out • Generator exhaust, water separator • Chain locker on bow deck • 1800 GPD watermaker • LED underwater lights (2) • Safe • Prop removal and installation tool • Chilled water air conditioning, (3) 5-ton, with reversecycle heating and soft starting AC compressors

Engine Compartment & Bilge • Water manifold blocks with centralized shut-off valve for sinks and showers • Polyethylene water lines • Pultruded fiberglass rudder shelf • AC fluorescent lights • DC LED lights • DC exhaust blower • Twin diesel engines, freshwater-cooled with electrically controlled marine gears, neutral interlocks, exhaust silencers, engine hour meters, alternators, fuel filters and seawater strainers • FM200 fixed fire extinguishing system for engine/ generator compartment with automatic and remote manual controls plus audible and visual discharge signals • Two AC ventilation fans • Two 40kW freshwater-cooled generators(D) with shock mounts, sound enclosure, remote start, seawater strainer, fuel/water separator, hour meter, and water lift muffler • AC tubeaxial exhaust discharge fan for engine room • Electric fuel transfer system with filtration and dry tankprotection for pump(s) • Freshwater fill hose for engines and generators • AC compressed air system with air line and regulator with accessory

connection • Dockside water inlet with pressure regulating valve and automatic dockside tank fill • Bilge pumps with heavy duty float switches and protective guards • 24-volt DC bilge and sump pumps with heavy-duty float switches and protective guards • Auxiliary emergency bilge pumps • Bronze/chrome ball-valves through-bolted in solid fiberglass on all underwater through hull fittings with electrical bonding throughout • Pressurized freshwater pump with backup pump • (2) 50 gallon & (1) 30 gallon 230-volt AC electric water heaters • Fiberglass fuel tanks constructed with fire-retardant resin and bronze fittings • Fiberglass water tanks, constructed with bronze fittings • Fiberglass holding tank, constructed with bronze fittings and 24-volt DC sewage pump, plumbed for dockside pump-out, with 3/4 full display and alarm as part of systems monitor programmable logic controller • Fiberglass gray water tanks with sewage pump, plumbed for dockside pump-out with 3/4 full display and alarm as part of systems monitor • Oil changing system for engines, generators and gears with two 110 gallon auxiliary transfer tanks • Fuel filter/water separator, generators & engines • Sealed shower sump • Electric fuel priming pumps, engines • Painted engine room and bilges • United States Coast Guard approved fuel lines • 1" stainless-steel steering tie bar with pivoting self-aligning ball joint connection at all cylinder and tie bar connections • Insulation in salon deck for sound mitigation • Individual sea chests for each engine and gensets, high speed seachest for water makers, air conditioners and raw water pumps • Discharge sea chest • Digital monitoring for main engines • Engine start / stop switches and hour meter • Work bench with tool storage • Rubber deck mat between engines

Electrical Systems • Two 24 volt banks of heavy-duty, 12 volt marine batteries mounted in fire retardant fiberglass boxes • Tin-coated wiring with insulation, labeled and color coded • 240 volt automatic battery charger, 50/60Hz • Automatic battery paralleling system with switch on helm console • Two 240 volt, 100 amp, transformer connected retractable shore cords with over-current protection and wireless remote control • Two polarization transformers with boost function • DC LED lights • Battery control panel with fuses and isolation switches • DC electronics panel with magnetic circuit breakers • AC and DC distribution panels with magnetic circuit breakers • AC switching panel with source selector switches, volt meter, ammeter, frequency meter, generator start/stop controls, and distribution panel selector switches • Navigation lights • Ground fault protection on AC receptacles and AC lighting circuits • Omni-directional TV antenna • Smoke detectors and carbon monoxide detectors

Flybridge & Bridge Deck • Computer controlled ethernet monitoring system with LCD touch screen display providing visual and audible signals for engines, gears, generators, high bilge water, fire warning in engine compartment, fire extinguisher discharge in engine compartment, AC power loss, smoke detectors, tank level indication, low battery voltage, battery charger failure, bilge pump control and run indication, holding tank pump control and run indication, and carbon monoxide detectors. A history log is maintained for critical alarms and trends may be set up to view various parameters with respect to time. Additional monitoring points may be added to the system economically and easily. • Welded and polished stainless-steel grab rails • 5 pieces of modular fiberglass furniture including cabinets and/or lounges in a custom designed layout • Tinted windshield • Painted aluminum framed radar arch • Fiberglass hardtop with overhead LED lighting, radar mast, and anchor light • Compass with dimmable light • Control station with all necessary switches, singlelever clutch and throttle controls (electronic) with emergency ack-up and engine synchronization, synchronizer, back-up controls, power assisted steering, compass and electronic console • Hydraulic power-assisted steering • Two (2) adjustable helmchairs • Sliding door to pilothouse •

Audio system with Bluetooth capabilities • Wet bar with solid surface countertop, sink, refrigerator, icemaker and three barstools • Stairs from pilothouse to bridge • Molded fiberglass steps with hatch and DC lights to aft deck • Neutral interlock switches allowing engine to start in neutral only • Fuel gauges • Canvas console cover • Freshwater wash down outlet • Double electric grill • Port & starboard wing stations • Retractable 40" class TV **Pilothouse** • Computer controlled ethernet monitoring system with LCD touch screen display providing visual and audible signals for engines, gears, generators, high bilge water, fire warning in engine compartment, fire extinguisher discharge in engine compartment, AC power loss, smoke detectors, tank level indication, low battery voltage, battery charger failure, bilge pump control and run indication, holding tank pump control and run indication, and carbon monoxide detectors. A history log is maintained for critical alarms and trends may be set up to view various parameters with respect to time. Additional monitoring points may be added to the system economically and easily. • Elevated L-shaped lounge • Stone table with stainless-steel pedestal • Adjustable helmchair • Fixed frameless windows and windshield with safety glass • Intermittent electric windshield wipers/washers with controls • Padded chart flat • Hardwood flooring • Audio system integrated with salon stereo • Defogger • HVAC control **Aft Deck** • Molded bench seating with cushions and cover • Molded fiberglass steps with lights to flybridge • Molded fiberglass steps with lights to swim platform, port and starboard • Stainless steel gates from aft deck to platform • Boarding gates, port and starboard side decks • Audio system integrated with salon stereo • AC duplex outlet with ground fault protection • DC LED overhead lighting • Door with stairwell to crew's quarters/engine room • Teak table with cover • Freshwater wash down outlet • Teak deck, natural finish **Swim platform** • Freshwater wash down outlet • Hot/cold integrated shower • Pop-up cleats (2) • Stainless steel re-boarding ladder • Watertight door to crew quarters and engine room **Galley** • Tile flooring • Microwave/convection oven • Inserts to match interior finish on appliance fascia • LED TV (standard arrangement only) • U-shaped lounge with stone table • Stone countertops and backsplash with stainless sink and cabinets • Refrigerator with freezer and icemaker • Four-burner ceramic cooktop • Garbage disposal • HVAC control • Dishwasher • Oven • Wine cooler, 46 bottle • Center island with storage, stone countertops, and four bar stools • Skylight **Salon & dining** • Removable upholstered headliner • Fixed frameless windows with tinted safety glass • Upholstered panels and finished wood bulkheads • Carpeting with hardwood entryways • Privacy blinds • Automatic opening, stainless-steel sliding door to aft deck • Buffet cabinet • 46" class TV • Entertainment system with AM/FM, iPod Dock, and surround sound speakers • Blu-ray disc player • Allowance for custom furnishings such as sofa, dinnette table, cocktail table(s), chair(s), end table(s), and accessories • HVAC control • Wet bar with refrigerator, icemaker, and bottle and glass storage • Decorative wood accents above dining table • Stairway to pilothouse • Pantograph door to side deck, port • Stainless-steel sliding door to side deck, starboard **Day head** • Stone/tile flooring • Upholstered headliner • Wallcovering • Pedestal sink • Mirror • Towel ring • Freshwater toilet • 120 volt AC recirculating fan • Holding tank 3/4 full indicator light **Lower Companionway** • Carpeting • Fabric headliner installed on track system • Flush panel doors with door stops to staterooms • Lighted stairway to main deck • Washer/dryer • Bilge access • Coffee bar with stone top and tile backsplash **Master stateroom** • Carpeting • King-sized berth with upholstered headboard and cedar-lined storage underneath • Upholstered berth base • HMC mattress, bunk cover, pillows, shams and linens • Cedar-lined closet with light, port and starboard • Nightstands • Dressers, port and starboard • 40" class TV •

Entertainment system with AM/FM stereo, iPod Dock, and speakers • Blu-ray disc player • Full-length mirror • Private access to head • Privacy blinds • HVAC control • Portlights, port and starboard **Master head** • Stone/tile flooring • Wallcovering and tiled bulkheads • Stone countertops, backsplashes, and sidesplashes with undermount sinks • Stone/tile shower with frameless door • Two mirrors • Two base cabinets with storage • Two towel bars • Two freshwater toilets • Two 120 volt AC recirculating fans • Two holding tank 3/4 full indicator lights

Bow Stateroom • Carpeting • Queen sized tapered berth with upholstered headboard and cedar lined storage underneath • Upholstered berth base • HMC mattress, bunk cover, pillows, shams and linens • Cedar lined closet with automatic light • Nightstands • Armoire • 40" class TV • Entertainment system with AM/FM stereo, iPod Dock, and speakers • Blu-ray disc player • Full-length mirror • Private access to head • HVAC control • Emergency hatch to bow deck

Port Stateroom • Carpeting • Twin berths with upholstered headboards • Upholstered berth bases • HMC mattress, bunk cover, pillows, shams and linens • Cedar lined closet with drawers and light • Nightstand • 26" class TV • Entertainment system with AM/FM, iPod Dock, and speakers • Blu-ray disc player • Full-length mirror • Private access to head • HVAC control • Portlight

Starboard Stateroom • Carpeting • Twin berths with upholstered headboards that convert to queen berth • Upholstered berth base(s) • HMC mattress, bunk cover, pillows, shams and linens • Cedar lined closet with drawers and light • Nightstand • 26" class TV • Entertainment system with AM/FM stereo, iPod Dock, and speakers • Blu-ray disc player • Full-length mirror • Private access to head • HVAC control • Portlight

Guest Heads • Stone/tile flooring • Wallcovering • Stone countertop, backsplash and sidesplash with porcelain undermount sink (Two sinks in bow guest head) • Stone/tile shower with frameless glass door • Mirror • Base cabinet with storage • Towel bar • Freshwater toilet • 120 volt AC recirculating fan • Holding tank 3/4 full indicator light

Captain & crew staterooms • Carpeting • Over/under berths (starboard stateroom) and double berth (port stateroom) • Upholstered berth base • HMC mattress, bunk cover, pillows, shams and linens • Cedar-lined hanging/storage locker with light • 26" class TV (2) • DC AM/FM stereo receiver with CD/DVD player and speakers (2) • Full-length mirror • HVAC controls • Dresser

Crew head • Synthetic wood flooring • Wallcovering • Solid-surface countertop with sink and storage cabinet • Shower with door and sump pump • Mirror • Towel bar • Freshwater toilet • Recirculating fan • Holding tank 3/4 full indicator light

Crew lounge • Synthetic wood flooring • Microwave/convection oven • Refrigerator • L-lounge with solid-surface dinette table • Base cabinet with stainless steel sink and upper storage cabinet • Stairs from aft deck • Door to engine room with window • Watertight door from swim platform • Washer/dryer

Provisioning Items • Stern staff • Braided nylon mooring lines (6) • Fenders (4) • Life jackets (12) • Life ring (2) • Flare gun with flares • First aid kit • Boat Hook • Tool set • Water delivery kit with spare electrical and mechanical components • Recommended cleaning supplies for care of your new yacht • Allowance for navigational electronics such as radar, depth sounder, automatic identification system, GPS/plotter, VHF radios, hailer horns, and autopilot • Allowance for custom furnishings such as dinette table, cocktail table(s), chair(s), lounge(s), and accessories • Allowance for linens such as sheets and towel sets • Allowance for dining items such as china, crystal, and flatware

Generators

Twin Onan 40kw Generators hours: port- 1237 hours / stbd- 1217 hours Water Maker - 254 hours

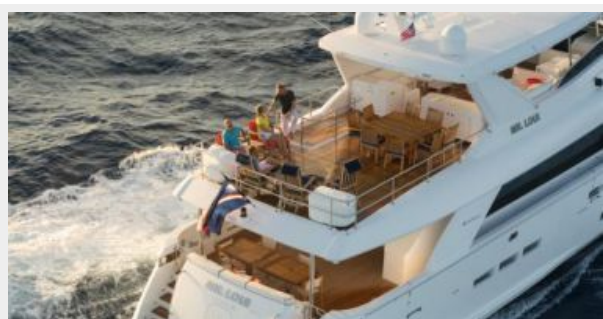
Исключения

При продаже яхты исключаются личные вещи владельца.

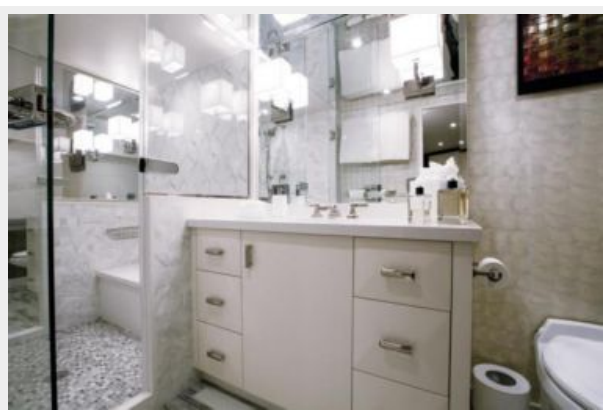
Отказ от ответственности

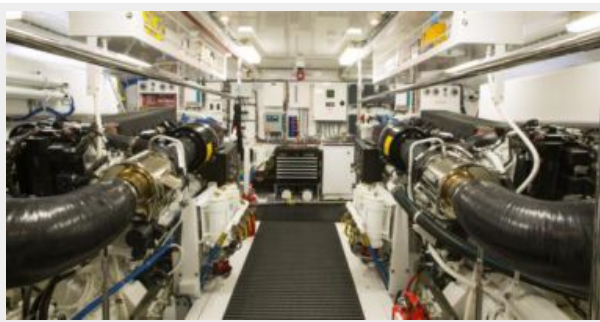
Компания предоставляет описание судна или яхты добросовестно, но не может гарантировать точность этой информации, а также не ручается за техническое состояние. Покупатель должен проинструктировать своих агентов или оценщиков исследовать представленную информацию более подробно, по собственному желанию. Продажа судна или яхты, изменение цены или снятие с продажи будет происходить без предварительного уведомления.

ФОТОГРАФИИ











КОНТАКТЫ

Андрей Шестаков (Andrey Shestakov) – ведущий яхтенный брокер отдела продаж яхт и судов компании Shestakov Yacht Sales Inc. Официальный представитель Shestakov Yacht Sales Inc. для русскоговорящих клиентов в центральном офисе компании в Майами/Форт Лодердейл/Флорида/США.

Контактная информация

Email: andrey@shestakovyachtsales.com

Web: shestakovyachtsales.com

Телефоны

Краснодарский край: **+7(918)465-66-44**

США, Майами, Флорида: **+1(954)274-4435**

Время работы

Понедельник – Суббота: **9:00 - 21:00**
EDT

Воскресенье: **Закрето**

Адрес



Harbour Towne Marina, 850 NE 3rd St,
STE 213, Dania, FL 33004