

## NOVA SPORT — NOVA MARINE



**Builder:** NOVA MARINE

**LOA:** 39' 0" (11.89m)

**Year Built:** 2015

**Model:** High Performance

**Price:** PRICE ON APPLICATION

**Location:** United States

Our experienced yacht broker, Andrey Shestakov, will help you choose and buy a yacht that best suits your needs **Nova Sport — NOVA MARINE** from our catalogue. Presently, at Shestakov Yacht Sales Inc., we have a wide variety of yachts available on our sale's list. We also work in close contact with all the big yacht manufacturers from all over the world.

If you would like to buy a yacht **Nova Sport — NOVA MARINE** or would like help answering any questions concerning purchasing, selling or chartering a yacht, please call **+1(954)274-4435**

---

# TABLE OF CONTENTS

---

TABLE OF CONTENTS	2
SPECIFICATIONS	3
Overview	3
Basic Information	3
Dimensions	3
Accommodations	4
Hull and Deck Information	4
Engine Information	4
PHOTOS	5
CONTACTS	15
Contact details	15
Telephones	15
Office hours	15
Address	15

---

# SPECIFICATIONS

---

## Overview

---

Look at this New 2015 39' Nova Sport.

Taking offer's!

If you love performance boats, you will Love this boat. This boat builder know his stuff, when building a boat. This boat was written up in the Boating magazine as a great boat, that can compete or do better then the well know boats in it's class. Very sleek lines, and Custom Touches, that you don't find from it's competers.

The Nova has overcome these challenges, by achieving what normally would be considered design paradoxes. The result is a hull with the following features:

Ability to take on rough seas without pounding and reach higher speeds in comparison to a similar boat with same horse power and weight in the same sea conditions

Ability to stay on plane without losing speed during turns (or if one of the twin engines is shut down)

Ability to stay dry while cutting through waves and eliminating pounding

Having more interior space and head room while maintaining a sleek exterior profile.

This boat is powered by a powerful twin Diesel Volvo Penta's D6 370 Duo prop's.

This is a must see, and must have Vessel!

---

## Basic Information

---

**Category:** High Performance

**Model Year:** 2015

**Year Built:** 2015

**Country:** United States

---

## Dimensions

---

**LOA:** 39' 0" (11.89m)

---

## Accommodations

---

**Total Cabins:** 1

---

## Hull and Deck Information

---

**Hull Material:** Fiberglass

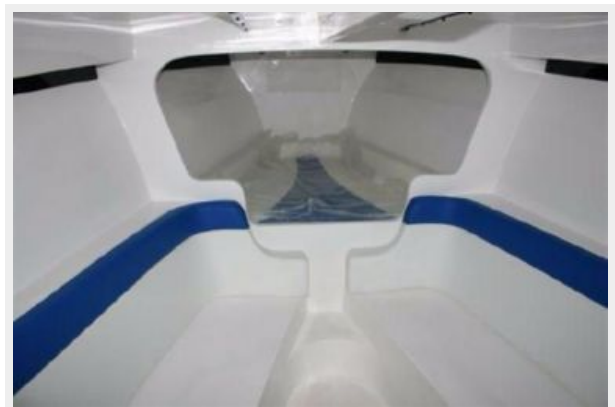
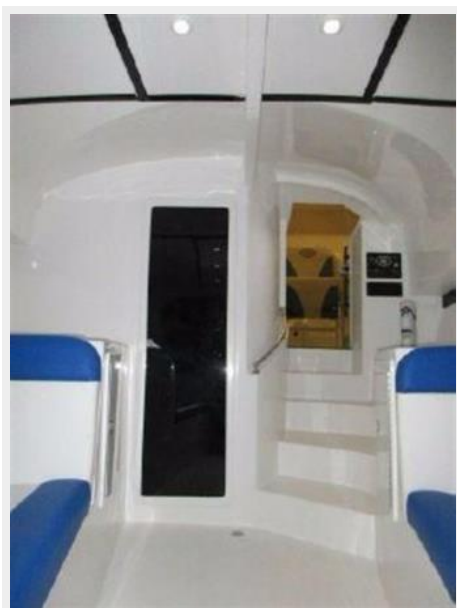
---

## Engine Information

---

**Manufacturer:** Volvo Penta

# PHOTOS







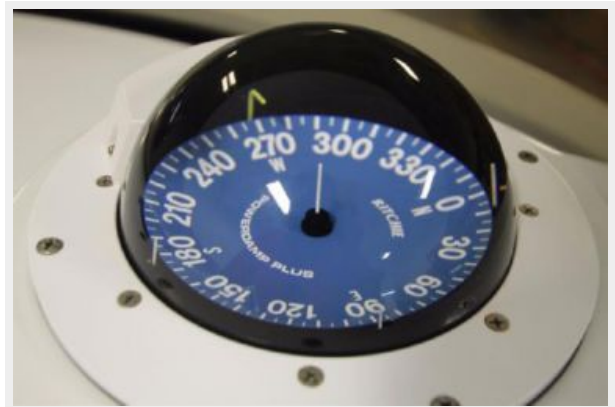
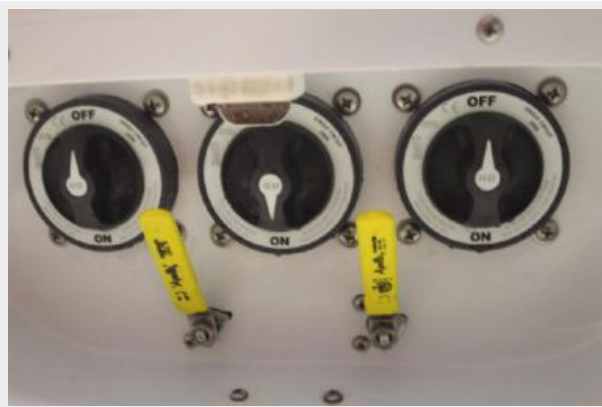




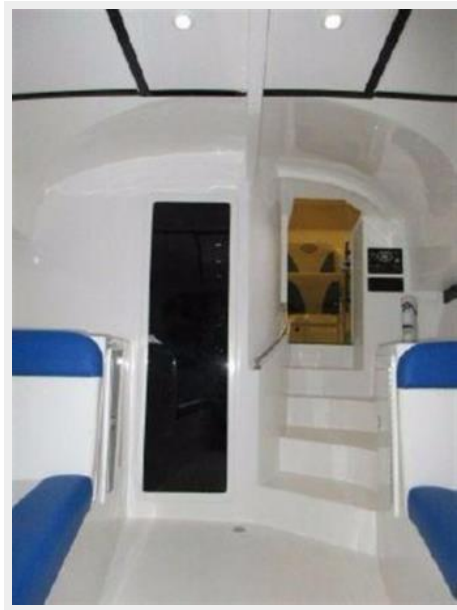












# CONTACTS

---

Andrey Shestakov, leading yacht broker of the sales department of Shestakov Yacht Sales Inc. Shestakov Yacht Sales Inc., the official representative of the Miami/Fort Lauderdale FL headquarters.

## Contact details

---

Email: [andrey@shestakovyachtsales.com](mailto:andrey@shestakovyachtsales.com)

Web: [shestakovyachtsales.com/en/](http://shestakovyachtsales.com/en/)

## Telephones

---

USA: +1(954)274-4435

## Office hours

---

Monday – Saturday: **9:00 - 21:00** EDT

Sunday: **closed**

## Address

---



Harbour Towne Marina, 850 NE 3rd St,  
STE 213, Dania, FL 33004