

HYDROTHERAPY — VIKING



Builder: VIKING

Year Built: 1996

Model: Sport Fisherman

Price: PRICE ON APPLICATION

Location: United States

LOA: 50' 7" (15.42m)

Beam: 16' 4" (4.98m)

Min Draft: 4' 9" (1.45m)

Our experienced yacht broker, Andrey Shestakov, will help you choose and buy a yacht that best suits your needs **Hydrotherapy — VIKING** from our catalogue. Presently, at Shestakov Yacht Sales Inc., we have a wide variety of yachts available on our sale's list. We also work in close contact with all the big yacht manufacturers from all over the world.

If you would like to buy a yacht **Hydrotherapy — VIKING** or would like help answering any questions concerning purchasing, selling or chartering a yacht, please call **+1(954)274-4435**

TABLE OF CONTENTS

TABLE OF CONTENTS	2
SPECIFICATIONS	6
Overview	6
Basic Information	6
Dimensions	6
Speed, Capacities and Weight	6
Accommodations	7
Hull and Deck Information	7
Engine Information	7
DETAILED INFORMATION	8
Vessel Walk Through	8
Salon	8
Dinette	8
Galley	9
Master Stateroom	9
Master Head	9
VIP Stateroom	9
Guest Stateroom	9
Guest Head	10
Helm	10
Fly Bridge	10
Electronics	10
Mechanical Equipment and Engine Room	10
Cockpit	11
Decks	11
Hull	11
Exclusions	11
Disclaimer	11

PHOTOS	12
Starboard Profile	12
Salon Entrance	12
Salon Entrance	12
Salon	12
Salon Liquor Cabinet	13
Salon Stereo	13
Teak Dinette Table	13
Dinette	13
Galley	13
Galley Sink	13
Princess Range	14
Range Cover	14
Washer and Dryer	14
Main Breaker Panel	14
Companionway	14
Companionway Facing Aft	14
Master Stateroom	15
Master Stateroom	15
Master Stateroom Vanity	15
Master Head	15
Master Shower	15
Master Head	15
V-Berth	16
V-Berth	16
Posrt Side Guest Berth	16
Guest Head	16
Guest Head	16
Aft Bulkhead	16

Cockpit Tackle Station	17
Cockpit	17
Flybridge Beach Seating	17
Flybridge Forward Seating	17
Helm Control Station	17
Helm Station	17
Main Helm Station	18
Stereo Controls	18
Teaser Reels	18
Tower Helm	18
Tower Seat	18
Transom Door	18
Engine Room Access	19
Port Engine	19
Starboard Engine	19
9KW Generator	19
Tower View to Bow	19
Cockpit Flood Lights	19
Bow Pulpit	20
Bow	20
Bottom Paint	20
Port Bow Profile	20
Port Profile	20
Starboard Bow Profile	20
Transom	21
CONTACTS	22
Contact details	22
Telephones	22
Office hours	22

Address

22

SPECIFICATIONS

Overview

This 1996 50' Viking convertible has everything you need to be an effective all around fishing vessel. Whether you plan to fish tournaments, fish high end luxury charters, or just take your family out for fun, this boat has what you need. The boat has recently had an extensive refit inside and out. New carpet, LED lighting, new mattresses in every berth and a new electrical system inside make this boat ready to go tomorrow. The MAN engines recently completed a 13 hour cruise running at 29 knots the entire way. With fresh bottom paint and zincs, she is in great shape from the keel to the tower. The electronics have been removed from the helm and seller is willing to negotiate a replacement for them of the buyers choice.

Basic Information

Category: Sport Fisherman

Model Year: 1996

Year Built: 1996

Country: United States

Coast Guard #: 1037924

Fly Bridge: Yes

Cockpit: Yes

Dimensions

LOA: 50' 7" (15.42m)

Beam: 16' 4" (4.98m)

Min Draft: 4' 9" (1.45m)

MFG Length: 50' 7" (15.42m)

Speed, Capacities and Weight

Displacement: 58814 Pounds

Water Capacity: 208 Gallons

Holding Tank: 35 Gallons

Fuel Capacity: 805 Gallons

Accommodations

Total Cabins: 3

Total Berths: 5

Sleeps: 6

Total Heads: 2

Hull and Deck Information

Hull Material: Fiberglass

Deck Material: Fiberglass

Hull Configuration: Modified Deep Vee

Hull Color: White

Hull Finish: Plastic

Hull Designer: Viking

Engine Information

Engines: 2

Manufacturer: MAN

Model: D2840LXE

Engine Type: Outboard

Fuel Type: Diesel

DETAILED INFORMATION

Vessel Walk Through

Stepping aboard at the transom you will immediately notice a large, spacious cockpit. There are in deck refrigerated fish boxes, fresh and salt water wash downs, and a mounting plate for a fighting chair. The aft bulkhead sports a sink, tackle station, engine room access hatch, top loading ice box and the ladder to the flybridge. The flybridge boasts two large cushioned bench seats and the primary helm station. From the cockpit, the salon door slides left into a pocket on the starboard side. In the salon, there is a main seating area with an L-shaped couch to port. Along the starboard side near the entrance is the main breaker panel, as well as a mini bar storage space and the stereo system. Forward of that, the dinette fills the starboard side of the main cabin. The L-shaped couch and teak table give ample space for everyone to sit down for a meal. To the port side of the boat is the galley. The galley has a two burner stove, two refrigerators and two freezers. There is a large sink and plenty of storage. Moving towards the bow, the companionway brings you forward to the living quarters. To starboard is a mid-ship master stateroom boasting a queen size bed with a separate vanity from a private master head. To port you will find two bunk bed style berths in a guest stateroom. From there, the washer and dryer are stored in a closet to port. Beyond that you will find the day head that has a separate doorway to the VIP stateroom in the V-berth. The carpet is brand new in the boat as of April, 2016.

Salon

- Teak wooden floors throughout
- Leather L-shaped sofa with storage underneath
- Teak cabinetry throughout salon
- Cruisair A/C controls with digital controls
- 110V outlets
- Tinted exterior windows
- Rolling blinds
- LED lighting
- Electrical panel

Dinette

- Teak dinette with teak pedestal
- Leather L-shaped sofa
- Mirrored siding above sofa
- 110V outlets
- LED lighting

Galley

- Princess two burner range with custom Marlin cutout cover
- Corian white countertops
- U-line schelor drawer style fridge and freezers (4)
- Recessed microwave

Master Stateroom

- Queen size bed with brand new mattress and custom covers
- Mirrored head board
- Private vanity
- LED lighting
- Hanging closet
- Custome carpeting brand new
- 110V outlets

Master Head

- Separate shower with folding shower doors
- Vaccuflush head
- Sink
- Vanity mirror
- LED lighting
- Head vent

VIP Stateroom

- Bunk beds with brand new custom twin mattresses
- 12inch Television
- Hanging closet
- LED lighting

Guest Stateroom

- Bunk beds with brand new custom twin mattresses
- 12 inch television
- Hanging closet
- LED lighting

Guest Head

- Separate shower with folding shower doors
- Vaccuflush head
- Sink
- Vanity mirror
- LED lighting
- Head vent
- Separate doorway to VIP stateroom

Helm

- Analog engine gauges
- Hydraulic engine controls
- Brand new helm chair
- Stereo controls

Fly Bridge

- Factory Hardtop
- Spreader lights
- Cushioned bench seats
- Storage beneath seats

Electronics

None Seller is willing to negotiate installing electronics of buyer's choice

Mechanical Equipment and Engine Room

- MAN 820 HP diesel engines 10 cylinder
- Northern Lights 9KW diesel generator
- Fireboy system
- AC compressors
- Battery charger
- Engine room circulating fans (new 4/16)
- 50 Amp shore power cord
- Hydraulic steering system
- High water bilge alarms
- Battery switches

- Overhead lighting

Cockpit

- Insulated and refrigerated fish box
- Lee rod holders
- Fresh and saltwater washdowns
- Tackle station
- Bait freezer Ice box
- stainless steel sink
- Tackle drawers

Decks

- Transom gate with door
- Fresh painted nonskid
- Aluminum bow rails
- Powder coated aluminum hand rails
- Electric windlass with Delta anchor

Hull

- Fresh black bottom paint
- Brand new zincs
- Underwater lights

Exclusions

Owner's personal belongings.

Disclaimer

The Company offers the details of this vessel or yacht in good faith but cannot guarantee or warrant the accuracy of this information nor warrant the condition of the vessel. A buyer should instruct his representatives, agents, or his surveyors, to investigate such details as the buyer desires validated. This vessel or yacht is offered subject to prior sale, price change, or withdrawal without notice.

PHOTOS

Starboard Profile



Salon Entrance



Salon Entrance



Salon



Salon Liquor Cabinet



Salon Stereo



Teak Dinette Table



Dinette



Galley



Galley Sink



Princess Range



Range Cover



Main Breaker Panel



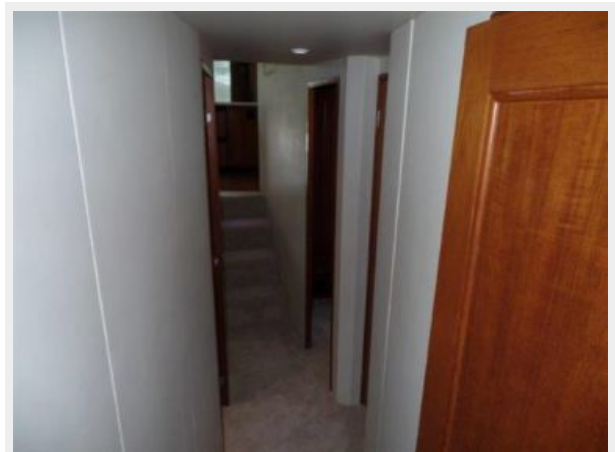
Washer and Dryer



Companionway



Companionway Facing Aft



Master Stateroom



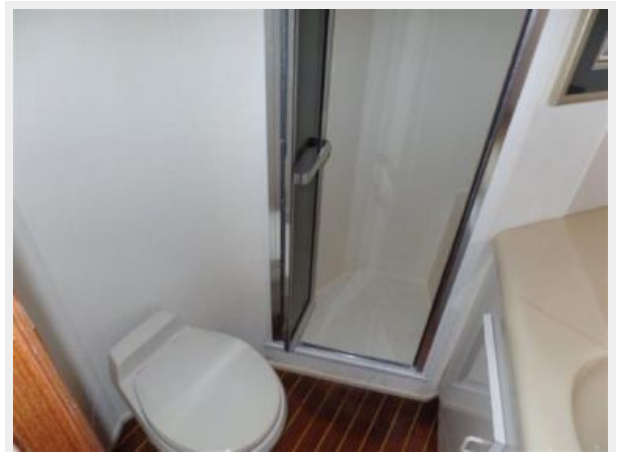
Master Stateroom



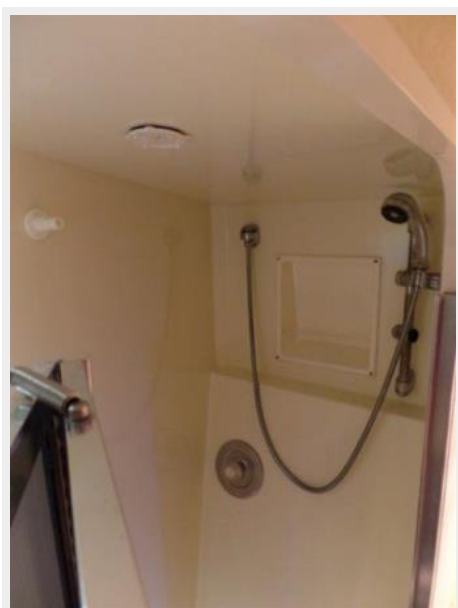
Master Stateroom Vanity



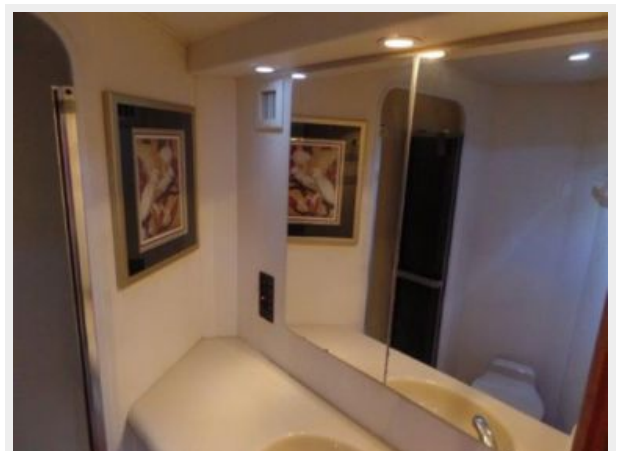
Master Head



Master Shower



Master Head



V-Berth



V-Berth



Posrt Side Guest Berth



Guest Head



Guest Head



Aft Bulkhead



Cockpit Tackle Station



Cockpit



Flybridge Beach Seating



Flybridge Forward Seating



Helm Control Station



Helm Station



Main Helm Station



Stereo Controls



Teaser Reels



Tower Helm



Tower Seat



Transom Door



Engine Room Access



Port Engine



Starboard Engine



9KW Generator



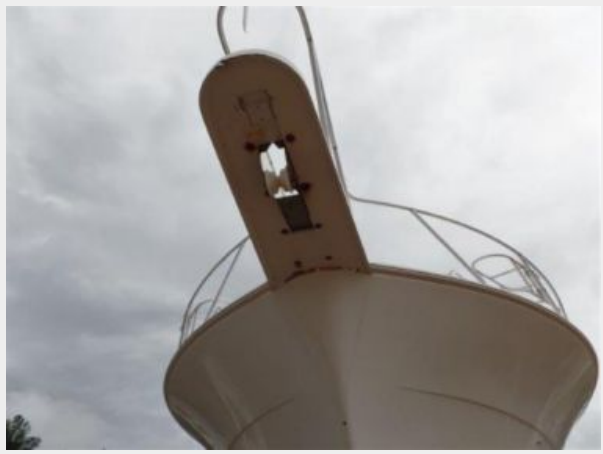
Tower View to Bow



Cockpit Flood Lights



Bow Pulpit



Bow



Bottom Paint



Port Bow Profile



Port Profile



Starboard Bow Profile



Transom



CONTACTS

Andrey Shestakov, leading yacht broker of the sales department of Shestakov Yacht Sales Inc. Shestakov Yacht Sales Inc., the official representative of the Miami/Fort Lauderdale FL headquarters.

Contact details

Email: andrey@shestakovyachtsales.com

Web: shestakovyachtsales.com/en/

Telephones

USA: +1(954)274-4435

Office hours

Monday – Saturday: **9:00 - 21:00** EDT

Sunday: **closed**

Address



Harbour Towne Marina, 850 NE 3rd St,
STE 213, Dania, FL 33004