

HYDROTHERAPY — VIKING



Судостроитель: VIKING

Год постройки: 1996

Модель: Катер для спортивной рыбалки

Цена: ЦЕНА ЯХТЫ ПО ЗАПРОСУ

Местонахождение: United States

Длина общая: 50' 7" (15.42m)

Ширина: 16' 4" (4.98m)

Мин. осадка: 4' 9" (1.45m)

Купить **Hydrotherapy — VIKING** а также выбрать подходящую вам яхту из нашего каталога яхт вам поможет опытный яхтенный брокер Андрей Шестаков. На сегодняшний день компания **Shestakov Yacht Sales Inc.** имеет большое количество яхт в собственном списке продаж, а также тесно сотрудничает со всеми крупными яхтенными производителями по всему миру.

Для того чтобы купить яхту **Hydrotherapy — VIKING** а также проконсультироваться по любому вопросу связанному с покупкой, продажей, чартером яхт позвоните по телефону **+7(918)465-66-44**.

ОГЛАВЛЕНИЕ

ОГЛАВЛЕНИЕ	2
ХАРАКТЕРИСТИКИ	6
Обзор	6
Основная информация	6
Размеры	6
Скорость, вместимость и масса	6
Размещение	7
Корпус и палуба	7
Информация о двигателе	7
ПОДРОБНОЕ ОПИСАНИЕ	8
Vessel Walk Through	8
Salon	8
Dinette	8
Galley	9
Master Stateroom	9
Master Head	9
VIP Stateroom	9
Guest Stateroom	9
Guest Head	10
Helm	10
Fly Bridge	10
Electronics	10
Mechanical Equipment and Engine Room	10
Cockpit	11
Decks	11
Hull	11
Исключения	11
Отказ от ответственности	11

ФОТОГРАФИИ	12
Starboard Profile	12
Salon Entrance	12
Salon Entrance	12
Salon	12
Salon Liquor Cabinet	13
Salon Stereo	13
Teak Dinette Table	13
Dinette	13
Galley	13
Galley Sink	13
Princess Range	14
Range Cover	14
Washer and Dryer	14
Main Breaker Panel	14
Companionway	14
Companionway Facing Aft	14
Master Stateroom	15
Master Stateroom	15
Master Stateroom Vanity	15
Master Head	15
Master Shower	15
Master Head	15
V-Berth	16
V-Berth	16
Port Side Guest Berth	16
Guest Head	16
Guest Head	16
Aft Bulkhead	16

Cockpit Tackle Station	17
Cockpit	17
Flybridge Beach Seating	17
Flybridge Forward Seating	17
Helm Control Station	17
Helm Station	17
Main Helm Station	18
Stereo Controls	18
Teaser Reels	18
Tower Helm	18
Tower Seat	18
Transom Door	18
Engine Room Access	19
Port Engine	19
Starboard Engine	19
9KW Generator	19
Tower View to Bow	19
Cockpit Flood Lights	19
Bow Pulpit	20
Bow	20
Bottom Paint	20
Port Bow Profile	20
Port Profile	20
Starboard Bow Profile	20
Transom	21
КОНТАКТЫ	22
Контактная информация	22
Телефоны	22
Время работы	22

Адрес

22

ХАРАКТЕРИСТИКИ

Обзор

This 1996 50' Viking convertible has everything you need to be an effective all around fishing vessel. Whether you plan to fish tournaments, fish high end luxury charters, or just take your family out for fun, this boat has what you need. The boat has recently had an extensive refit inside and out. New carpet, LED lighting, new mattresses in every berth and a new electrical system inside make this boat ready to go tomorrow. The MAN engines recently completed a 13 hour cruise running at 29 knots the entire way. With fresh bottom paint and zincs, she is in great shape from the keel to the tower. The electronics have been removed from the helm and seller is willing to negotiate a replacement for them of the buyers choice.

Основная информация

Тип судна: Катер для спортивной рыбалки

Модельный год: 1996

Год постройки: 1996

Страна: United States

Номер регистрации в береговой охране: 1037924

Открытая палуба мостика: Да

Кубрик: Да

Размеры

Длина общая: 50' 7" (15.42m)

Ширина: 16' 4" (4.98m)

Мин. осадка: 4' 9" (1.45m)

Длина привального бруса: 50' 7" (15.42m)

Скорость, вместимость и масса

Водоизмещение: 58814 Pounds

Вместимость воды: 208 Gallons

Вместимость сточного бака: 35 Gallons

Объем топливного бака: 805 Gallons

Размещение

Всего кают: 3

Всего коек: 5

Спальные места: 6

Всего ком. состава: 2

Корпус и палуба

Материал корпуса: Fiberglass

Материал палубы: Fiberglass

Комплектация корпуса: Modified Deep Vee

Цвет корпуса: White

Отделка корпуса: Plastic

Дизайнер корпуса: Viking

Информация о двигателе

Двигатели: 2

Производитель: MAN

Модель: D2840LXE

Тип двигателя: Outboard

Тип топлива: Diesel

ПОДРОБНОЕ ОПИСАНИЕ

Vessel Walk Through

Stepping aboard at the transom you will immediately notice a large, spacious cockpit. There are in deck refrigerated fish boxes, fresh and salt water wash downs, and a mounting plate for a fighting chair. The aft bulkhead sports a sink, tackle station, engine room access hatch, top loading ice box and the ladder to the flybridge. The flybridge boasts two large cushioned bench seats and the primary helm station. From the cockpit, the salon door slides left into a pocket on the starboard side. In the salon, there is a main seating area with an L-shaped couch to port. Along the starboard side near the entrance is the main breaker panel, as well as a mini bar storage space and the stereo system. Forward of that, the dinette area fills the starboard side of the main cabin. The L-shaped couch and teak table give ample space for everyone to sit down for a meal. To the port side of the boat is the galley. The galley has a two burner stove, two refrigerators and two freezers. There is a large sink and plenty of storage. Moving towards the bow, the companionway brings you forward to the living quarters. To starboard is a mid-ship master stateroom boasting a queen size bed with a separate vanity from a private master head. To port you will find two bunk bed style berths in a guest stateroom. From there, the washer and dryer are stored in a closet to port. Beyond that you will find the day head that has a separate doorway to the VIP stateroom in the V-berth. The carpet is brand new in the boat as of April, 2016.

Salon

- Teak wooden floors throughout
- Leather L-shaped sofa with storage underneath
- Teak cabinetry throughout salon
- Cruisair A/C controls with digital controls
- 110V outlets
- Tinted exterior windows
- Rolling blinds
- LED lighting
- Electrical panel

Dinette

- Teak dinette with teak pedestal
- Leather L-shaped sofa
- Mirrored siding above sofa
- 110V outlets
- LED lighting

Galley

- Princess two burner range with custom Marlin cutout cover
- Corian white countertops
- U-line schelor drawer style fridge and freezers (4)
- Recessed microwave

Master Stateroom

- Queen size bed with brand new mattress and custom covers
- Mirrored head board
- Private vanity
- LED lighting
- Hanging closet
- Custome carpeting brand new
- 110V outlets

Master Head

- Separate shower with folding shower doors
- Vaccuflush head
- Sink
- Vanity mirror
- LED lighting
- Head vent

VIP Stateroom

- Bunk beds with brand new custom twin mattresses
- 12inch Television
- Hanging closet
- LED lighting

Guest Stateroom

- Bunk beds with brand new custom twin mattresses
- 12 inch television
- Hanging closet
- LED lighting

Guest Head

- Separate shower with folding shower doors
- Vaccuflush head
- Sink
- Vanity mirror
- LED lighting
- Head vent
- Separate doorway to VIP stateroom

Helm

- Analog engine gauges
- Hydraulic engine controls
- Brand new helm chair
- Stereo controls

Fly Bridge

- Factory Hardtop
- Spreader lights
- Cushioned bench seats
- Storage beneath seats

Electronics

None Seller is willing to negotiate installing electronics of buyer's choice

Mechanical Equipment and Engine Room

- MAN 820 HP diesel engines 10 cylinder
- Northern Lights 9KW diesel generator
- Fireboy system
- AC compressors
- Battery charger
- Engine room circulating fans (new 4/16)
- 50 Amp shore power cord
- Hydraulic steering system
- High water bilge alarms
- Battery switches

- Overhead lighting

Cockpit

- Insulated and refrigerated fish box
- Lee rod holders
- Fresh and saltwater washdowns
- Tackle station
- Bait freezer Ice box
- stainless steel sink
- Tackle drawers

Decks

- Transom gate with door
- Fresh painted nonskid
- Aluminum bow rails
- Powder coated aluminum hand rails
- Electric windlass with Delta anchor

Hull

- Fresh black bottom paint
- Brand new zincs
- Underwater lights

Исключения

При продаже яхты исключаются личные вещи владельца.

Отказ от ответственности

Компания предоставляет описание судна или яхты добросовестно, но не может гарантировать точность этой информации, а также не ручается за техническое состояние. Покупатель должен проинструктировать своих агентов или оценщиков исследовать представленную информацию более подробно, по собственному желанию. Продажа судна или яхты, изменение цены или снятие с продажи будет происходить без предварительного уведомления.

ФОТОГРАФИИ

Starboard Profile



Salon Entrance



Salon Entrance



Salon



Salon Liquor Cabinet



Salon Stereo



Teak Dinette Table



Dinette



Galley



Galley Sink



Princess Range



Range Cover



Main Breaker Panel



Washer and Dryer



Companionway



Companionway Facing Aft



Master Stateroom



Master Stateroom



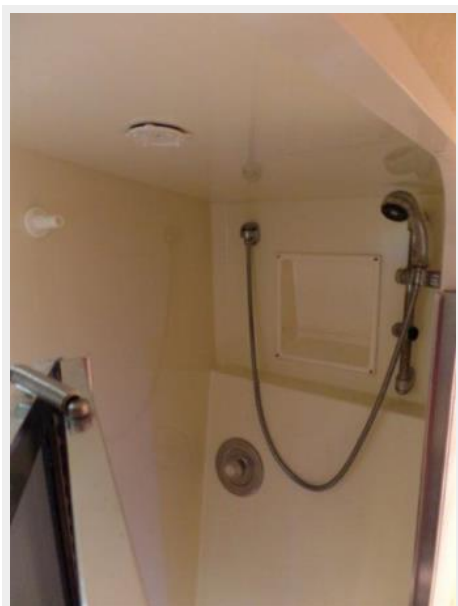
Master Stateroom Vanity



Master Head



Master Shower



Master Head



V-Berth



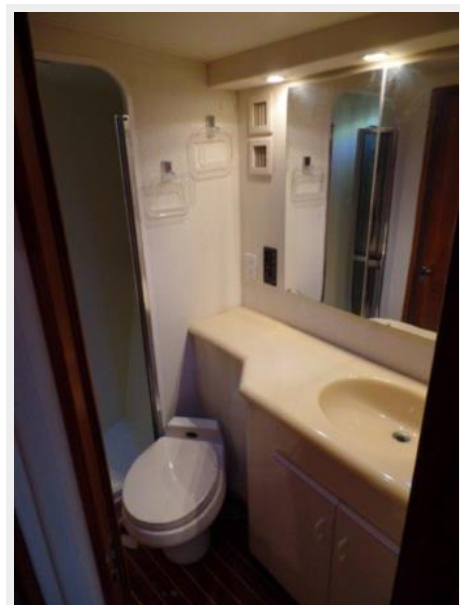
V-Berth



Posrt Side Guest Berth



Guest Head



Guest Head



Aft Bulkhead



Cockpit Tackle Station



Cockpit



Flybridge Beach Seating



Flybridge Forward Seating



Helm Control Station



Helm Station



Main Helm Station



Stereo Controls



Teaser Reels



Tower Helm



Tower Seat



Transom Door



Engine Room Access



Port Engine



Starboard Engine



9KW Generator



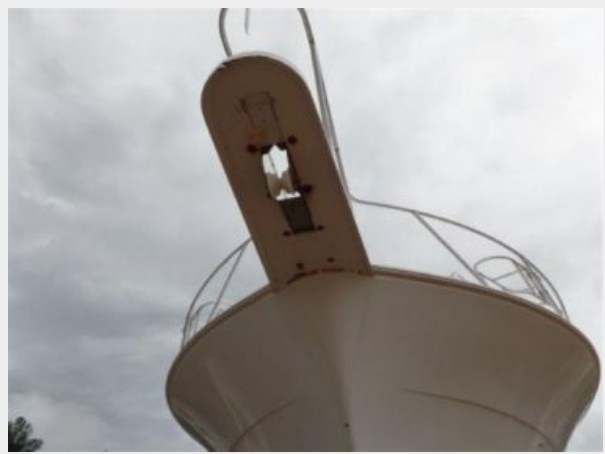
Tower View to Bow



Cockpit Flood Lights



Bow Pulpit



Bow



Bottom Paint



Port Bow Profile



Port Profile



Starboard Bow Profile



Transom



КОНТАКТЫ

Андрей Шестаков (Andrey Shestakov) – ведущий яхтенный брокер отдела продаж яхт и судов компании Shestakov Yacht Sales Inc. Официальный представитель Shestakov Yacht Sales Inc. для русскоговорящих клиентов в центральном офисе компании в Майами/Форт Лодердейл/Флорида/США.

Контактная информация

Email: andrey@shestakovyachtsales.com

Web: shestakovyachtsales.com

Телефоны

Краснодарский край: **+7(918)465-66-44**

США, Майами, Флорида: **+1(954)274-4435**

Время работы

Понедельник – Суббота: **9:00 - 21:00**
EDT

Воскресенье: **Закрыто**

Адрес



Harbour Towne Marina, 850 NE 3rd St,
STE 213, Dania, FL 33004