

80 SUNSEEKER — SUNSEEKER



Builder: SUNSEEKER

Year Built: 2011

Model: Motor Yacht

Price: PRICE ON APPLICATION

Location: Mexico

LOA: 80' 0" (24.38m)

Beam: 19' 11" (6.07m)

Cruise Speed: 20.855429808 Kts. (24 MPH)

Max Speed: 26.06928726 Kts. (30 MPH)

Our experienced yacht broker, Andrey Shestakov, will help you choose and buy a yacht that best suits your needs 80 Sunseeker — SUNSEEKER from our catalogue. Presently, at Shestakov Yacht Sales Inc., we have a wide variety of yachts available on our sale's list. We also work in close contact with all the big yacht manufacturers from all over the world.

If you would like to buy a yacht 80 Sunseeker — SUNSEEKER or would like help answering any questions concerning purchasing, selling or chartering a yacht, please call +1(954)274-4435

TABLE OF CONTENTS

TABLE OF CONTENTS	2
SPECIFICATIONS	3
Overview	3
Basic Information	6
Dimensions	6
Speed, Capacities and Weight	7
Accommodations	7
Hull and Deck Information	7
Engine Information	7
PHOTOS	8
CONTACTS	14
Contact details	14
Telephones	14
Office hours	14
Address	14

SPECIFICATIONS

Overview

wo Boot Top lines in black

Flybridge GRP hardtop, including retractable centre canopy in White

Hydraulics - Trac Star Digital fin stabiliser system (providing full roll control at speeds above 13 knots and significant roll reduction while at rest or anchor) System includes Trac thrusters providing simultaneous, proportional thrusting

Flybridge Cockpit Teak Decking

Flybridge Starboard bench seat deleted, Enlarge wetbar featuring a large Coolbox and standard Icemaker deleted

Bose upgrade for Flybridge - 4 x Bose 131 speakers powered by 2 x Bose SA3 amplifiers allowing for Zone control of the Saloon Bose system with the Bose PMCII remote

Waterproof socket (3.5mm jack, Poly-planar IC3.5PM) fitted on the Flybridge for connection to I-Pod headphone socket and connected to the Bose system

SAT TV

Dummy dome

Reduce the back rest height of the Flybridge seating by 10cm

Flybridge 'U' Shaped seating, aft return reduced in length

Electric BBQ Grill - Gaggenau lava coal in lieu of standard ceramic griddle in the Flybridge Wetbar

Supply Two Free Standing Sunbeds with Coffee Table for the Aft of the Flybridge

Furuno Network Sounder option with transducer connected to Navnet displays

Furuno Navnet2 10.4" Additional Colour multifunctional display

Add a Handrail on the inboard side of the Starboard steps from the Platform to the Cockpit. Handrail needs to be long enough to cover all steps.

Umbrella in White with offset post at foredeck with two sockets either side of Bench Seat

Bow sunpad backrest to have 3 positions

Side Mount Stairway with hull fittings port and starboard

Fore deck teak table

The forward facing seat on the bow to be Sunbrella 5404 Natural with the lower panel of the back rest upholstered in MBS Atlantis 'Carbon' vinyl

Stainless Steel Anchor and Chain

Bose upgrade for Foredeck - 2 x Infinity Kappa Marine 9" x 6" speakers powered with 1 x Bose SA3 amplifier allowing for Zone control of the Saloon Bose system with the Bose PMCII remote (only available if Bose 48 is selected for the saloon)

White LED lights in side decks

Waterproof socket (3.5mm jack, Poly-planar IC3.5PM) fitted on the Fore deck for connection to I-Pod headphone socket and connected to the Bose system

Aft Cockpit seating to be Sunbrella 5453 Canvas with the bottom panel of the back rest upholstered in MBS Atlantis 'Carbon' vinyl

Patio Door Sunseeker logo in Silver

Bose upgrade for Aft Cockpit - 4 x Bose 131 speakers powered by 2 x Bose SA2 amplifiers allowing for Zone control of the Saloon Bose system with the Bose PMCII remote

Dimmers required for all internal and external lighting except Crew Cabin and Lobby

Large coolbox required in Cockpit wetbar in lieu of standard. Delete the bin and extend into this space.

Supply 5 x Director Chairs in teak, upholstered in Sunbrella 5030 Arbor Pebble 48009

Chocks on Platform for Tender

Backlit stainless steel back-lit white LED

Special Day Head arrangement in the Deck Saloon located on the Starboard side next to the patio doors. Sink to be larger than std.

Flooring in the Saloon, Dining, Wheelhouse, Day Head, Lower Lobby & Stair Treads to be Amtico Walnut W701 in wide planks (114mm) in lieu of carpet

Air Conditioning - Upgraded to Tropical specification

DVD - Bose Lifestyle 48 DVD/CD Surround System in lieu of Standard Surround System for the Saloon, Speakers supplied in white.

Hoshizaki Ice maker

Wine cooler located in the Saloon below Flybridge stairs in cupboard

Saloon TV relocated to the Starboard side on standard rise and fall mechanism

Special Dining table/Coffee Table with folding leaves on the Port side of the Saloon on rise and fall pedestal.

Helm screen divider

Dining Chairs to be Andreu World 'New Anna' Medium Back SI 1370 with legs stained in Walnut 336. 2 x upholstered in Spinneybeck Volo VO957 leather & 6 x upholstered in Spinneybeck Volo VO960 leather in lieu of standard

Special L shape Sofa on the Port Side of the Saloon, Delete the two standard Arm Chairs.

Special modified step with low level Balustrade to Divide Saloon and Dining Area

70 Manhattan Style Roof feature in the Saloon in-lieu of standard. The roof feature to be level with the headlings and Chequer board effect in Black American Walnut - Satin Finish. The single roof feature to be divided up into six sections 3 across from Port to Starboard side and 2 deep (from forward to Aft)

Copper Canyon Avonite Stair Riser from the Saloon to the Dining Area.

Day Head Bulkheads: The complete Aft wall above Vanity to be in Mirror, the Port and Forward Bulkhead in Cashmere Lacquer and the Starboard Bulkhead surrounding Day Head door in Black American Walnut in lieu of standard laminate.

Combination Microwave Oven fitted below the Hob in-lieu of the Standard Oven and Microwave

Galley hob to have stainless steel surround rail

Extended Enclosed Galley Option

Cabinet storage required in-lieu of seating in the Port Side Navigation area. Cabinets to be no higher than the standard seating backrest height

Lower Helm Console to be sprayed to match colour of MBS Dollaro Dark Chocolate - Faux Leather in lieu of standard graphite

Apple Ipad Docks fitted in all the Cabins

All speaker Covers in White

Key lock for cabin doors

Roman blinds in the Master, VIP, Port & Starboard cabins to have Black Out lining in lieu of standard

Safe - 2 brick - with Key lock

Fridge fitted below stairs in the Lobby

Underwater lights - 7 x White LED wide angle (3 across transom, 1 aft each side + 1 below master stateroom window each side)

Small mini bar for master walk-in wardrobe

Create shoe storage in the Master Cabin Wardrobe.

Hinged Pullman berth in the Port and Starboard Twin guest cabin fitted on the inboard bulkhead

Sliding Bed option in the Starboard Guest Cabin

Sliding Bed option in the Port Guest Cabin

Washing Machine & Tumble Dryer - Separate washing machine (located in the Port Crew Cabin) and tumble dryer (located in the Crew Lobby) in lieu of standard combination unit.

Generators Upgraded to Two Kohler 32kw 60Hz with super silent sound shields in lieu of standard two Kohler 23kw 60Hz

Idromar Water Maker 130 litres per hour (MC2J-130)

Microsoft Word - SpecSave1141180

2 Storage Cages located in the Engine Room 1 above each engine

Basic Information

Category: Motor Yacht

Model Year: 2011

Year Built: 2011

Country: Mexico

Dimensions

LOA: 80' 0" (24.38m)

Beam: 19' 11" (6.07m)

Speed, Capacities and Weight

Cruise Speed: 20.855429808 Kts. (24 MPH) **Max Speed:** 26.06928726 Kts. (30 MPH)

Max Speed Range: 350 Kts.

Water Capacity: 317 Gallons

Holding Tank: 49 Gallons

Fuel Capacity: 1586 Gallons

Accommodations

Total Cabins: 4

Total Berths: 1

Sleeps: 2

Hull and Deck Information

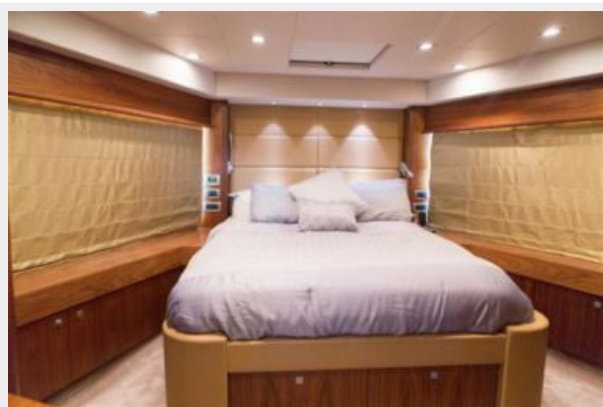
Hull Material: Fiberglass

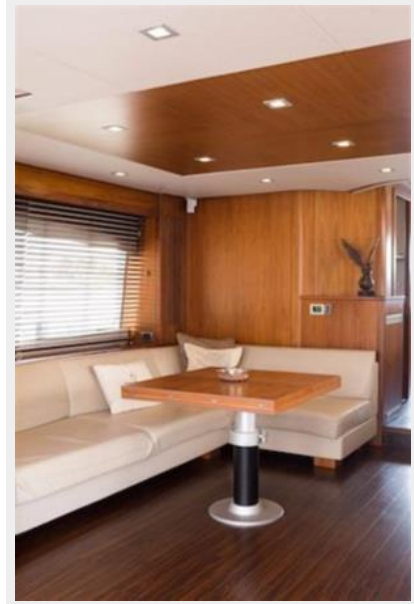
Engine Information

Engines: 2

Manufacturer: MAN

PHOTOS













CONTACTS

Andrey Shestakov, leading yacht broker of the sales department of Shestakov Yacht Sales Inc. Shestakov Yacht Sales Inc., the official representative of the Miami/Fort Lauderdale FL headquarters.

Contact details

Email: andrey@shestakovyachtsales.com

Web: shestakovyachtsales.com/en/

Telephones

USA: +1(954)274-4435

Office hours

Monday – Saturday: **9:00 - 21:00** EDT

Sunday: **closed**

Address



Harbour Towne Marina, 850 NE 3rd St,
STE 213, Dania, FL 33004