

LANGKAWI LADY — STERLING YACHTS



Builder: STERLING YACHTS

Year Built: 1983

Model: Classic

Price: €3,200,000 EUR

Location: Malaysia

LOA: 157' 6" (48mm)

Beam: 28.41

Max Draft: 10' 10" (3.29mm)

Cruise Speed: 10 Knots Kts. (12 MPH)

Max Speed: 14 Knots Kts. (16 MPH)

Our experienced yacht broker, Andrey Shestakov, will help you choose and buy a yacht that best suits your needs **LANGKAWI LADY — STERLING YACHTS** from our catalogue. Presently, at Shestakov Yacht Sales Inc., we have a wide variety of yachts available on our sale's list. We also work in close contact with all the big yacht manufacturers from all over the world.

If you would like to buy a yacht **LANGKAWI LADY — STERLING YACHTS** or would like help answering any questions concerning purchasing, selling or chartering a yacht, please call **+1(954)274-4435**

TABLE OF CONTENTS

TABLE OF CONTENTS	2
SPECIFICATIONS	4
Overview	4
Basic Information	4
Dimensions	4
Speed, Capacities and Weight	4
Accommodations	4
Hull and Deck Information	5
Engine Information	5
PHOTOS	6
Portside	6
At sea portside	6
Lounge looking aft	6
Lounge	6
Dining 2	6
Bar aft	6
Master 2	7
Master 1	7
Master bed	7
Master Head	7
VIP	7
VIP 1	7
Twin cabin	8
Guest cabin	8
Kids & Nanny cabin 2	8
Guest head 2	8
Aft deck lunch	8
Aft deck to SB	8

Bridge deck	9
Bridge	9
Bridge by night	9
Galley	9
Bow looking aft	9
Bow	9
Foredeck	10
Tender storage	10
Plaque	10
Full PS	10
On the hard PS	10
On the hard SB	10
CONTACTS	11
Contact details	11
Telephones	11
Office hours	11
Address	11

SPECIFICATIONS

Overview

A spacious yacht providing accommodation for 18 guests in 8 well-appointed staterooms, including a large Owner's suite & a VIP suite, with a crew of 15. Langkawi Lady features plenty of spaces for dining or entertaining, and a long cruising range of 4,000Nm, ideal for the adventurous yachtsman, exploring the Asian waters with friends or family.

Basic Information

Category: Classic

Sub Category: Classic

Model Year: 1983

Year Built: 1983

Refit Type: Full Mechanical, Electrical & Navigational

Country: Malaysia

Dimensions

LOA: 157' 6" (48mm)

LWL: 146' 1" (44.51mm)

Beam: 28.41

Max Draft: 10' 10" (3.29mm)

Speed, Capacities and Weight

Cruise Speed: 10 Knots Kts. (12 MPH)

Cruise Speed Range: 4000

Max Speed: 14 Knots Kts. (16 MPH)

Gross Tonnage: 540 Pounds

Water Capacity: 35000 Gallons

Fuel Capacity: 21926.28 Gal Gallons

Accommodations

Total Cabins: 8

Sleeps: 18

Crew Cabin: 15

Hull and Deck Information

Hull Material: Composite Fiberglass

Hull Configuration: Full Displacement

Hull Color: White

Hull Designer: Sterling

Exterior Designer: Sterling

Engine Information

Engines: 2

Manufacturer: Caterpillar

Engine Type: Inboard

Fuel Type: Diesel

PHOTOS

At sea portside



Portside



Lounge



Lounge looking aft



Dining 2



Bar aft



Master 2



Master 1



Master bed



Master Head



VIP



VIP 1



Guest cabin



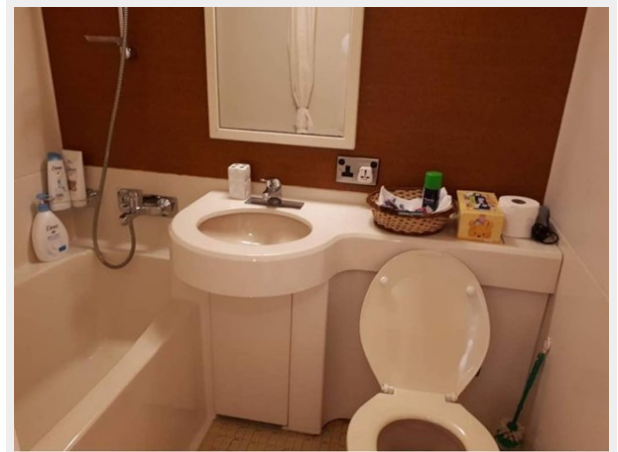
Twin cabin



Kids & Nanny cabin 2



Guest head 2



Aft deck lunch



Aft deck to SB



Bridge deck



Bridge



Bridge by night



Galley



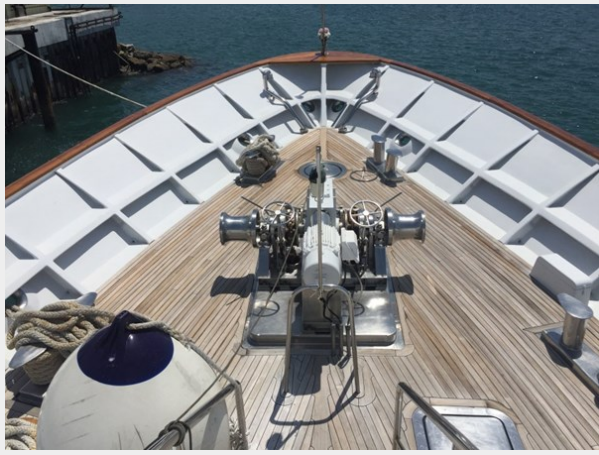
Bow



Bow looking aft



Foredeck



Tender storage



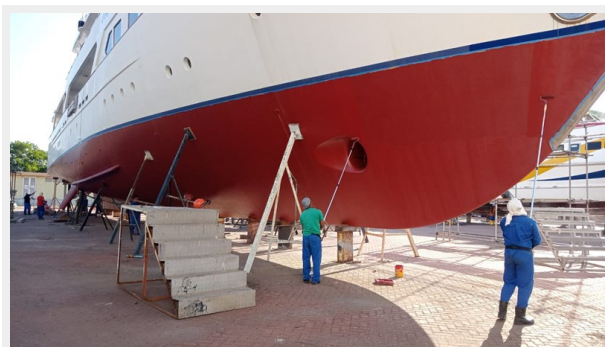
Plaque



Full PS



On the hard SB



On the hard PS



CONTACTS

Andrey Shestakov, leading yacht broker of the sales department of Shestakov Yacht Sales Inc. Shestakov Yacht Sales Inc., the official representative of the Miami/Fort Lauderdale FL headquarters.

Contact details

Email: andrey@shestakovyachtsales.com

Web: shestakovyachtsales.com/en/

Telephones

USA: +1(954)274-4435

Office hours

Monday – Saturday: **9:00 - 21:00** EDT

Sunday: **closed**

Address



Harbour Towne Marina, 850 NE 3rd St,
STE 213, Dania, FL 33004