

DARE CORDA — AZIMUT



Builder: [AZIMUT](#)

Year Built: 2012

Model: Cruiser

Price: PRICE ON APPLICATION

Location: United States

LOA: 44' 1" (13.44m)

Beam: 13' 11" (4.24m)

Max Draft: 3' 4" (1.02m)

Our experienced yacht broker, Andrey Shestakov, will help you choose and buy a yacht that best suits your needs **DARE CORDA — AZIMUT** from our catalogue. Presently, at Shestakov Yacht Sales Inc., we have a wide variety of yachts available on our sale's list. We also work in close contact with all the big yacht manufacturers from all over the world.

If you would like to buy a yacht **DARE CORDA — AZIMUT** or would like help answering any questions concerning purchasing, selling or chartering a yacht, please call **+1(954)274-4435**

TABLE OF CONTENTS

TABLE OF CONTENTS	2
SPECIFICATIONS	3
Overview	3
Basic Information	3
Dimensions	3
Speed, Capacities and Weight	3
Accommodations	3
Hull and Deck Information	4
Engine Information	4
DETAILED INFORMATION	5
Major Features	5
Exclusions	6
Disclaimer	6
PHOTOS	7
CONTACTS	15
Contact details	15
Telephones	15
Office hours	15
Address	15

SPECIFICATIONS

Overview

DARE CORDA is a beautiful US Spec example of the popular Atlantis model of sleek express cruisers from Azimut. She is a one owner boat in turn-key condition loaded with an abundance of optional and upgraded equipment. She has been lift kept for most of her life, and is now offered for sale for the first time. Easy to see at the Fontainebleau Resort, Miami Beach.

Hull made by infusion, vinyl ester resin on the outer layers, PVC sandwich on bulwarks and engine room floor. Painting by gelcoat. Furniture, doors, and wall coverings make of natural oak and lacquered finishes. Fabric covered sofa, Dinette, cushioned exterior seating and sun lounge with teak table.

Basic Information

Category: Cruiser

Sub Category: Express

Model Year: 2012

Year Built: 2012

Country: United States

Vessel Top: Electronic Sunroof

Dimensions

LOA: 44' 1" (13.44m)

Beam: 13' 11" (4.24m)

Max Draft: 3' 4" (1.02m)

Speed, Capacities and Weight

Water Capacity: 92 Gallons

Holding Tank: 28 Gallons

Fuel Capacity: 327 Gallons

Accommodations

Total Cabins: 2

Hull and Deck Information

Hull Material: Fiberglass

Engine Information

Engines: 2

Manufacturer: Volvo

Model: D6-370

Fuel Type: Diesel

DETAILED INFORMATION

Major Features

Volvo Throttle & Volvo Aquamatic Joystick Control Volvo Penta Stern Drives 2 x Volvo Penta D6, 370hp each 1 x 10kw Kohler generator 10EOZD

Extras: Over \$120,000 spent on upgrades 2015.

Upgraded HP Bow Thruster Fusion MS IP600 Bluetooth Audio System Wifi internet JL Audio 3 zone 1000 amp system (7 speakers) 3 x Bose Cube Surround Sound System w Sub 3 New Samsung Flatscreen HD TV's with Blu Ray. 5 Ocean LED underwater lights LED lights throughout Security Camera Surveillance New Bimini Top Cockpit Cover New Rear cushions with terrycloth cover Custom ss Reinforced Mast FLIR Nightvision camera Raymarine E120 with all the plugins (Engine Monitor, depth sounder, XM Radio/Weather) 2 Epirbs GPS enabled Flush mounted self draining rod holders. All recalls and upgrades completed. 2 New AC units plus oversize Bilge Pump. Fingerprint enabled Safe Handgun Safe Full time service and lift kept for first 2 years.

Also included: 4 Spare Props with spare nuts & bolts Full set of tableware / Kitchenware Custom Bedding 3 Backup hand radios. Oversized Offshore Medical Kit Emergency Food/Rations Super Compact Life jackets

Deck and Cockpit: Teak decks. Besenzoni Gangway Swim Platform with Swim ladder Stainless steel Rubrail, Outdoor Kitchen with Sink Grill & Icemaker Teak Dining Table with built in seating Power Softtop Sunroof Oversized Panoramic Windshield Sliding Cabin door. Stainless Steel Anchor Outdoor Shower Helm Raymarine e-120 with all monitor plugins Raymarine ST60 Tridata Depth Gauge Autopilot Chain Counter Bow Thruster wipers searchlight Air Conditioning Adjustable Steering wheel VHF Radio Ritchie Compass

Galley & Dinette: U Shaped Dinette Sofa with Table Samsung TV SS sink Agotek glass stove top Microwave / grill oven 100 L Built in Refrigerator. Branded Kitchen ware, tableware, storage. Laminated counter top Opening Portholes

Mechanical & Electrical: Auto Firefighting system Anti Vibration mounts for engines Thermal and Acoustic Insulation 4 Climma Air AC units Racor Fuel Filter Stainless Steel Tanks Bilge Pumps 6 Batteries Mastervolt Chargemaster 12/28 Alternator 12V outlets. Matinco 125/250 volt 50 amp inlet. 50' Long Shore power cord.

Master Cabin Queen Bed Microfiber upholstered headboard and frame. wardrobe w mirror TV Panoramic windows reading lights Portholes & Skylight Master Head Glass shower stall, Rain shower head, teak shower grating. Mirror & Cabinets. Electric Toilet

VIP Double Bed, Microfiber upholstered headboard and frame. wardrobe w mirror TV Panoramic windows reading lights portholes VIP/ Day Head Plexiglass Shower Stall rainfall

showerhead Electric Toilet.

Exclusions

Owner's personal belongings.

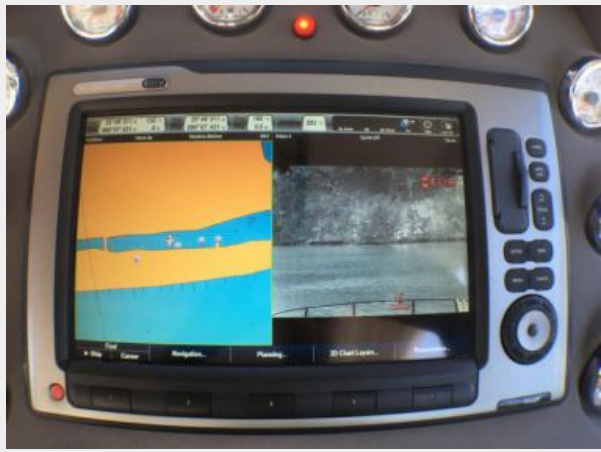
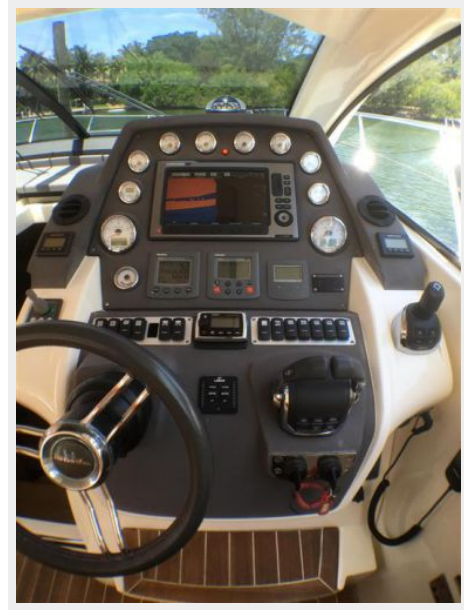
Disclaimer

The Company offers the details of this vessel or yacht in good faith but cannot guarantee or warrant the accuracy of this information nor warrant the condition of the vessel. A buyer should instruct his representatives, agents, or his surveyors, to investigate such details as the buyer desires validated. This vessel or yacht is offered subject to prior sale, price change, or withdrawal without notice.

PHOTOS

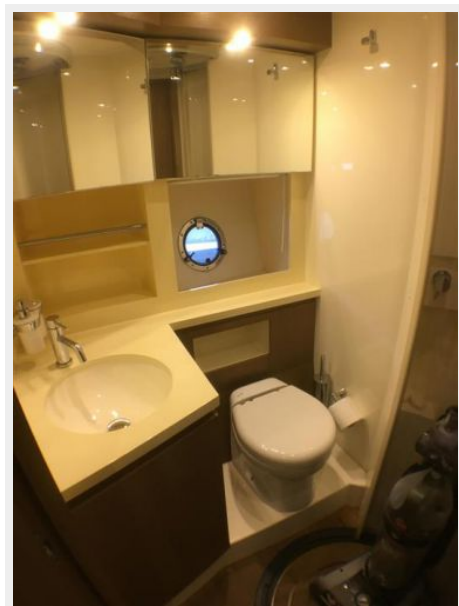


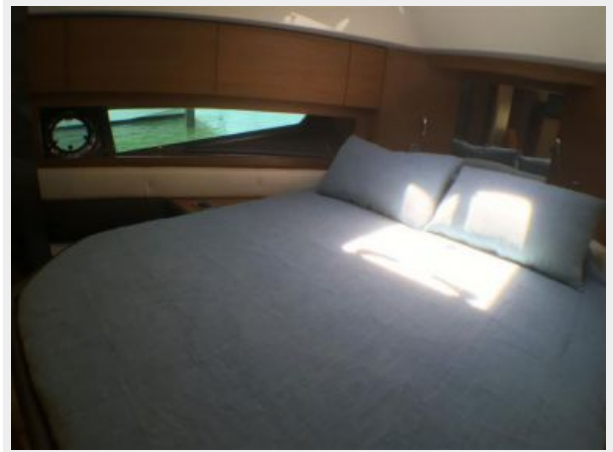














CONTACTS

Andrey Shestakov, leading yacht broker of the sales department of Shestakov Yacht Sales Inc. Shestakov Yacht Sales Inc., the official representative of the Miami/Fort Lauderdale FL headquarters.

Contact details

Email: andrey@shestakovyachtsales.com

Web: shestakovyachtsales.com/en/

Telephones

USA: +1(954)274-4435

Office hours

Monday – Saturday: **9:00 - 21:00** EDT

Sunday: **closed**

Address



Harbour Towne Marina, 850 NE 3rd St,
STE 213, Dania, FL 33004