

BROADWATER (NAME RESERVED) — FEADSHIP



Судостроитель: FEADSHIP

Год постройки: 1990

Модель: Моторная яхта

Цена: ЦЕНА ЯХТЫ ПО ЗАПРОСУ

Местонахождение: United States

Длина общая: 163' 0" (49.68m)

Ширина: 28' 6" (8.69m)

Макс. осадка: 10' 0" (3.05m)

Крейс. скорость: 12 Kts. (14 MPH)

Макс. скорость: 15 Kts. (17 MPH)

Купить **BROADWATER (Name Reserved) — FEADSHIP** а также выбрать подходящую вам яхту из нашего каталога яхт вам поможет опытный яхтенный брокер Андрей Шестаков. На сегодняшний день компания **Shestakov Yacht Sales Inc.** имеет большое количество яхт в собственном списке продаж, а также тесно сотрудничает со всеми крупными яхтенными производителями по всему миру. Для того чтобы купить яхту **BROADWATER (Name Reserved) — FEADSHIP** а также проконсультироваться по любому вопросу связанному с покупкой, продажей, чартером яхт позвоните по телефону **+7(918)465-66-44**.

ОГЛАВЛЕНИЕ

ОГЛАВЛЕНИЕ	2
ХАРАКТЕРИСТИКИ	4
Обзор	4
Основная информация	4
Размеры	4
Скорость, вместимость и масса	5
Размещение	5
Корпус и палуба	5
Информация о двигателе	5
ПОДРОБНОЕ ОПИСАНИЕ	6
Broker Comments	6
Walkthrough	6
Machinery	7
Communications and Navigation	8
Entertainment System	9
Galley and Laundry	9
Tenders and Toys	9
Deck Equipment	9
Security, Fire Fighting & Safety Equipment	10
Refit 2014/2015	10
Exclusions	10
Исключения	11
Отказ от ответственности	11
ФОТОГРАФИИ	12
КОНТАКТЫ	16
Контактная информация	16
Телефоны	16
Время работы	16

Адрес

16

ХАРАКТЕРИСТИКИ

Обзор

BROADWATER is an exceptional yacht that has had excellent owners her entire life. Built as MI GAEA by Feadship in Aalsmeer (Netherlands) and supervised by the De Voogt Naval Architects team she was the queen of the fleet when launched in 1990. Her original styling and interior design was done by Donald Starkey. Although found in excellent condition she returned to Feadship in 2008 as INEVITABLE to complete an extensive refit including extension of exterior decks and a new and all-encompassing interior refit that was designed and overseen by Patrick Knowles. As a result she won the best refit award at the World Superyacht Awards 2009. As BROADWATER she went through another extensive refit in 2014 at Rybovich in Florida. During this time she did an interior refit, again under the supervision and design team of Patrick Knowles. Her present owner and Patrick collaborated to bring the interior design and execution to a modern feel while keeping the wonderful pedigree she has to offer. Other major work was undertaken as well, including all new exterior paint, new sundeck arrangement and crane, updated galley, upgraded mechanics, AV and electronics, all new tenders and toys and much more. This refit also resulted in accolades with BROADWATER being named a finalist in this year's World Superyacht Awards 2016. A true must see, one will not be disappointed with the condition, comfort and feel BROADWATER has to offer throughout.

Основная информация

Тип судна: Моторная яхта

Модельный год: 1990

Год постройки: 1990

Год обновления: 2014

Страна: United States

Размеры

Длина общая: 163' 0" (49.68m)

Ширина: 28' 6" (8.69m)

Макс. осадка: 10' 0" (3.05m)

Скорость, вместимость и масса

Крейс. скорость: 12 Kts. (14 MPH)

Макс. скорость: 15 Kts. (17 MPH)

Вместимость воды: 7240 Gallons

Объем топливного бака: 17040 Gallons

Размещение

Всего кают: 5

Спальные места: 10

Каюты экипажа: 6

Корпус и палуба

Материал корпуса: Steel

Комплектация корпуса: Full
Displacement

Дизайнер корпуса: De Voogt

Дизайнер экстерьера: De Voogt

Дизайнер интерьера: Donald
Starkey/Patrick Knowles

Информация о двигателе

Двигатели: 2

Производитель: Caterpillar

Модель: 3512

Тип двигателя: Inboard

Тип топлива: Diesel

ПОДРОБНОЕ ОПИСАНИЕ

Broker Comments

BROADWATER is an exceptional yacht which has benefited from excellent owners her entire life. Built as MI GAEA by Feadship in Aalsmeer, (Netherlands) and supervised by the De Voogt Naval Architects team, she was the queen of the fleet when launched in 1990. Her original styling and interior design was done by Donald Starkey. Although found in excellent condition, she returned to Feadship in 2008 as INEVITABLE to complete an extensive refit/rebuild including a 3 meter hull extension, stretch of exterior decks and a new interior that was designed and by Patrick Knowles and produced my Metrica. As a result she won the best refit award at the World Superyacht Awards 2009. Now BROADWATER, under her latest ownership, continues to benefit from this wonderful pedigree. As BROADWATER she went through another extensive refit in 2014 at Rybovich in Florida. During this time she did an interior refit, again under the supervision and design team of Patrick Knowles. Her present owner and Patrick collaborated to bring the interior design and execution to a modern feel while keeping the wonderful pedigree she has to offer. The interior speaks for itself with beautiful wood, fabrics and detail to design. She has an open and airy feel throughout. Her custom built wine fridge proves to be the highlight and a perfect accent to divide the main salon while still offering a much needed open floor plan. Other major work was undertaken as well, including all new exterior paint, new sundeck arrangement and crane, updated galley, upgraded mechanics, AV and electronics, all new tenders and toys and much more. This refit also resulted in accolades with BROADWATER being named a finalist in this year's World Superyacht Awards 2016. A true must see, one will not be disappointed with the condition, comfort and feel BROADWATER has to offer throughout.

Walkthrough

Entering from starboard on BROADWATER, one will reach a formal foyer with beautiful french limestone and teak finished floors. The wood package throughout the boat is teak with all public and owner areas refreshed in a lime white wash that offers a clean, light and beautiful accent throughout. In this area there is also a wellappointed day head. Moving aft from the foyer one will enter the formal dining area. The dining table can be set to accommodate as many as 12 guests. In this area one will find the beautiful custom wine fridge offering a 250 wine bottle layout arrangement in spectacular fashion offering a storage as art accent piece. This island makes the perfect divider between the dining room and main salon, providing an open feel about the main deck. The main salon is appointed with beautiful furnishings with two settees to port and starboard, coffee table and end table, and four perfectly selected accent chairs. There is a large pop up TV that faces aft behind the wine fridge. The main salon and dining area have ample storage and integrated serving areas. Further aft is the entry to the main salon from the aft deck. This too offers a very nice, welcoming entryway with double wide opening teak door that offers a very spacious feel. Forward to port is the state of the art galley with professional appliances, excellent counter space, storage and refrigeration. There is plenty of light with the larger windows in the galley, perfect viewing the sea while underway or at the dock. The galley has doors at both

entrances that can be closed to keep noise and smells from entering other areas of the vessel. There is a serving pantry between the galley and formal dining for ease of serving and clean up. Further forward is the on deck, full beam master suite. When entering the suite, one will go through a well appointed owner's office. Continuing into the suite one will find a large owner's cabin with king berth, his and her bathrooms, walk-in closets and ample storage throughout. Mid-ship, a beautifully appointed staircase leads down to the four guest staterooms, plus swing cabin. There are four guest cabins: three large VIP guest cabins with queen berths and one that converts to an extra large king berth or two twins. All cabins have en suite baths, the best in entertainment systems and all lovely décor with ample storage. The swing cabin is forward of the starboard forward cabin and can serve as a cabin for staff, nanny or additional crew. This location also offers the service passageway for the interior staff to clean and care for the guest area. From the lower formal foyer one will go up a well appointed staircase to the upper landing that will take one aft to the sky lounge. Upon entering the sky lounge, one is surrounded by ample natural light from the large windows. There is a large sitting area facing forward with a large settee, two chairs and a coffee table. A large TV on the forward bulkhead is perfect for watching movies from the Kaleidescape system. Further aft in the sky lounge one will find a bar to starboard that offers three bar chairs and a beautiful French limestone top, behind which one will find all the serving amenities including ice maker and fridge. Across from the bar to port there is a table with four chairs perfect for coffee, meetings or gaming. In the sky lounge to port and forward one will find a large and well appointed day head. Continuing forward through a privacy door one will find crew access with a large serving pantry, forward is the crew office and going further forward one will find the pilothouse with sitting area and state of the art NAV equipment. The captain has a larger private cabin accessed from this area with en suite and private office. From the pilothouse one can access to the bow area through either pilothouse door. Moving aft from the sky lounge through the large double sliding doors one will enter the upper aft deck. Here one will find a beautiful varnished teak table expandable for seating for 12 to dine outside. This area also offers a lovely lounge area with loose and built in furniture for entertaining or just to curl up with a book. There are two large umbrellas for those times shade is needed for the best comfort. The sundeck can be accessed from the side deck to port by going up a built-in set of stairs. Upon reaching the sundeck one will find a huge area that offers a custom bar with sun pads and seating with a teak table forward as well as Jacuzzi and gym equipment. There is ample sun when wanted and shade via a built in awning forward of arch and removable awning aft. Moving back down to the main aft deck, one can enter the main salon through the double doors. This beautiful and spacious aft deck features a loose furniture area with settee chairs and table. There is a bar to starboard, perfect for servicing the aft deck or those spending time on the swim platform. From the aft deck one can go down a set of stairs to starboard that brings you to the large swim platform. The swim platform makes for easy access to the water for swimming or water sports and is equipped with a large umbrella and shower.

Machinery

2x CAT 3512 / Hours since rebuild: 1,726 hrs. as of 6/2016 Speed/Consumption per hours/Range/RPM

- Max: 15/325L/85.85 gallon/3000nm/1200
- Cruising: 12/137L/36.2 gallon/5700nm/960
- Economical: 11/107L/28.27 gallon/7000nm/900

Generators & Electricity

- 380 VAC delivers 220VAC/50Hz
- 3x CAT C4.4 80kw each
- No. 1:5129 / No. 2: 5379 / No. 3: 4297; as of 6/2016
- 21L/5.5gallon/crew service generator fuel consumption
- 35L/9.25 gallon/guest service generator fuel consumption
- 2x A/Sea AC75VHE-3 200 amp

Batteries

- Main engines: 24VDC 320 Ah
- Generator: 12VDC 160VDC
- Emergency: 24VDC

Air Conditioning

- Aqua Air AQ 480 HE, Copeland Compressors

Other Machinery

- 2x HEM 16,000L/day watermeters
- Quantum Zero Speed Stabilizers
- Johan Dan 55kw @ 1455 rpm bow thruster
- Tenfjord steering system
- Alpha-Laval 1150 L/h fuel separator and filtration
- Microphor sewage system
- HEM fresh water system
- Recovered Energy Boss 2,2T/107 bilge water filtration
- Lube oil capacity: 2,200L / 581 gallons
- Waste oil capacity: 1,600L / 422 gallons

Communications and Navigation

- Fleet SATcom
- Panasonic KX-T7420
- Furuno FM-8500 VHF
- Sailor RT5022 VHF
- Icom MC-506 VHF
- Panasonic KX-T7420

- Furuno X-Band radar
- Furuno S-Band radar
- Anshutz Kiel 110-106 gyro compass
- Robertson AP MK3 auto pilot
- 2x Leica MX400 GPS
- Dell server/iMac and PC ships computers
- B&G wind speed log
- Furuno NX-500 Navtex

Entertainment System

- Crestron video equipment
- Crestron audio equipment

Galley and Laundry

Main Galley

- Rationale oven and Miele 5-plate induction stove top
- Miele G7856 dishwasher

Crew Galley/Mess Equipment

- Samsung microwave
- Jura coffee maker

Laundry

- 3x Miele washer and 3x Miele dryer PT 7136 Plus

Tenders and Toys

- 2x 2015 Yamaha VX Deluxe Cruisers
- Zodiac N-70 150 hp Yamaha outboard
- Bauer compressor, 4x tanks assorted BCD
- 2x Inflatable paddle boards, inflatable tow toys
- Exercise equipment: Elliptical, Rowing machine, Weights

Deck Equipment

- Steen anchor windlass
- Steen aft warping capstans

- 2x High holding power stockless anchors 380kg
- 7/8" diameter, 2 sets of 5 shackles x 27.5m / 90'
- Nautical Structures EZ4400-LDEX davit
- Swim platform
- Passerelle

Security, Fire Fighting & Safety Equipment

- Pelcro DVR 5100
- Avocent Longview cameras
- Hatteland monitors
- Tyco CCU3/C-MXMB fire control system
- Novec 1230, dry powder, CO2, and foam fire extinguishers
- Smoke, heat and break glass alarms
- 4x Viking 10 pax, 1x Viking 6 pax life raft
- 8x life rings; two with smoke/strobe
- 3x ACR Global Fix EPIRBS
- Offshore Pack flares
- MCA 'A' Pack medical equipment

Refit 2014/2015

- Complete new paint job - Awlgrip
- Flybridge refit including outdoor gym, loungepad, and teak decking
- All new AV system: including iPad operating remotes, Kaleidescape movie library and wireless airplay capabilities
- New LED lighting system with Lutron panels installed throughout main areas and master stateroom
- New tenders/jet skis
- New Nautical Structures 4400lb crane
- Complete new interior - Limed wood redone in main salon/bridge salon, master stateroom/study
- Custom 250 bottle wine fridge
- Tongue and groove overheads
- New bridge electronics
- New ASEA shore power converter 150KVA

Exclusions

Owner's personal effects. A full inventory of exclusions to be provided at time of fully executed

purchase agreement.

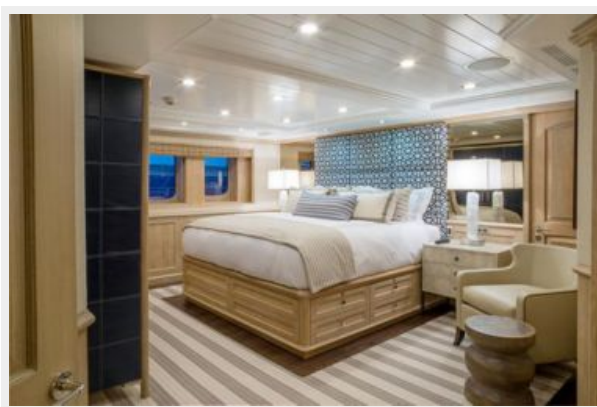
Исключения

При продаже яхты исключаются личные вещи владельца.

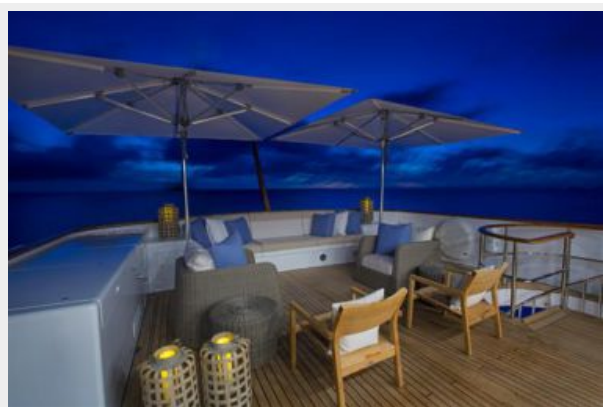
Отказ от ответственности

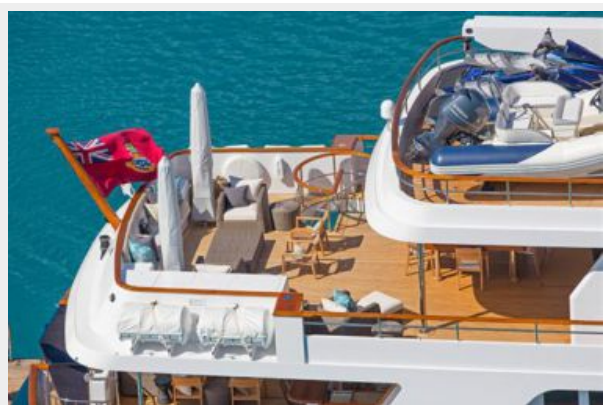
Компания предоставляет описание судна или яхты добросовестно, но не может гарантировать точность этой информации, а также не ручается за техническое состояние. Покупатель должен проинструктировать своих агентов или оценщиков исследовать представленную информацию более подробно, по собственному желанию. Продажа судна или яхты, изменение цены или снятие с продажи будет происходить без предварительного уведомления.

ФОТОГРАФИИ









КОНТАКТЫ

Андрей Шестаков (Andrey Shestakov) – ведущий яхтенный брокер отдела продаж яхт и судов компании Shestakov Yacht Sales Inc. Официальный представитель Shestakov Yacht Sales Inc. для русскоговорящих клиентов в центральном офисе компании в Майами/Форт Лодердейл/Флорида/США.

Контактная информация

Email: andrey@shestakovyachtsales.com

Web: shestakovyachtsales.com

Телефоны

Краснодарский край: **+7(918)465-66-44**

США, Майами, Флорида: **+1(954)274-4435**

Время работы

Понедельник – Суббота: **9:00 - 21:00**
EDT

Воскресенье: **Закрито**

Адрес



Harbour Towne Marina, 850 NE 3rd St,
STE 213, Dania, FL 33004