

COOKIE MONSTER — VIKING



Судостроитель: VIKING

Год постройки: 2007

Модель: Катер для спортивной рыбалки

Цена: ЦЕНА ЯХТЫ ПО ЗАПРОСУ

Местонахождение: United States

Длина общая: 74' 0" (22.56m)

Ширина: 19' 8" (5.99m)

Макс. осадка: 6' 0" (1.83m)

Купить **COOKIE MONSTER — VIKING** а также выбрать подходящую вам яхту из нашего каталога яхт вам поможет опытный яхтенный брокер Андрей Шестаков. На сегодняшний день компания **Shestakov Yacht Sales Inc.** имеет большое количество яхт в собственном списке продаж, а также тесно сотрудничает со всеми крупными яхтенными производителями по всему миру.

Для того чтобы купить яхту **COOKIE MONSTER — VIKING** а также проконсультироваться по любому вопросу связанному с покупкой, продажей, чартером яхт позвоните по телефону **+7(918)465-66-44**.

ОГЛАВЛЕНИЕ

ОГЛАВЛЕНИЕ	2
ХАРАКТЕРИСТИКИ	3
Обзор	3
Основная информация	3
Размеры	3
Скорость, вместимость и масса	3
Размещение	3
Корпус и палуба	3
Информация о двигателе	4
ПОДРОБНОЕ ОПИСАНИЕ	5
Major Features	5
Исключения	8
Отказ от ответственности	8
ФОТОГРАФИИ	9
КОНТАКТЫ	12
Контактная информация	12
Телефоны	12
Время работы	12
Адрес	12

ХАРАКТЕРИСТИКИ

Обзор

Easy to see in Miami Beach. Sleeps 8 in four staterooms, plus crew for up to 2.

Основная информация

Тип судна: Катер для спортивной рыбалки

Модельный год: 2007

Год постройки: 2007

Страна: United States

Открытая палуба мостика: Да

Кубрик: Да

Размеры

Длина общая: 74' 0" (22.56m)

Ширина: 19' 8" (5.99m)

Макс. осадка: 6' 0" (1.83m)

Скорость, вместимость и масса

Вместимость воды: 385 Gallons

Объем топливного бака: 3000 Gallons

Размещение

Всего кают: 4

Каюты экипажа: 1

Койки экипажа: 2

Корпус и палуба

Материал корпуса: Fiberglass

Информация о двигателе

Двигатели: 2

Производитель: MTU

Модель: 16V2000 M93

Тип топлива: Diesel

ПОДРОБНОЕ ОПИСАНИЕ

Major Features

Number of cabins: 4 RECENT UPGRADES FLYBRIDGE: New Nonskid 2/16 COMPANION WAY: New hot water heater 3/16 COCKPIT: New Eskimo ice chipper 8/15 ENGINE ROOM: New raw water pumps for chillers 8/14 New tempered water circulating pumps 12/15 New hydraulic cooling pumps 9/15 TOWER: Top of the tower is 35' - 37', Radar range: 120nm

Salon Hunter Douglas silhouette blinds Wall to wall carpeting with lead lined padding for sound absorption Canvas carpet runner for salon Satin teak cocktail table, hi/low Sofa with underneath storage for rods Custom Antico flooring at salon entrance Fixed, frameless side windows with tinted, tempered glass Additional phone & electrical outlet inside entertainment cabinet for fax machine Overhead Xenon lights recessed with dimmer switches Indirect decorative rope lighting behind valances Automatic sliding salon door, molded fiberglass door with window, key lock and teak finish Teak cabinetry with drawers and bottle storage Teak lambrequins with fabric embroidery Teak trim where Amtico floor meets carpet Custom fabric & teak valances Teak aft bulkhead Day Head Custom Aircraft latched pullout long storage drawers Forward and aft holding tank sentry's Fresh water gauge Head Hunter elongated head Granite countertop with satin fixtures

Master Stateroom Custom King size mattress Teak topped end tables Safe and storage under lift top bed Additional 110V, telephone and television outlet Corner settee Large hanging locker with mirrored doors Dimmer lights Large beveled wall mounted mirrors Custom fabrics Linen storage Custom headboard Gardall Safe

Master Head Mirrored ceiling Large wall mounted mirrors One-piece custom frameless shower door Large stall shower Grohe brushed nickel shower & faucet fixtures, towel bars and rings Corian vanity countertop with teak facing lower vanity Amtico teak and holly flooring Magnum Opus elongated Head Hunter head Custom wallpaper Exhaust fan Large storage closet with shelves

Forward Guest VIP Stateroom A/C and heat temperature stateroom Centerline queen with pillow top Carpeting Quilted bedspread Teak hanging locker, cedar-lined and spacious for hanging clothes Overhead Xenon lights and decorative rope lighting Separate switches for reading lights Stereo speakers recessed in headlined tied into TV and stereo Teak storage cabinets on port and starboard sides of the bed (4) Large storage drawers under the bed Teak Shelf

Forward Guest VIP Head Mirrored ceiling Medicine Cabinet with mirrored doors Amtico teak & holly flooring Granite vanity countertop with teak facing mirror A/C and heat with register soffit Exhaust fan with vent Shower light Stall shower Sink with Grohe faucet Towel bar and ring

Port Guest Stateroom Temperature controlled A/C and heat Upper and Lower berth Upgraded

single custom full bed Quilted bedspreads Carpeting Hanging locker, cedar-lined Stereo speakers recessed in soffit – tied into salon stereo DVD Player Overhead Xenon lights and decorative rope lighting Teak shelf

Head Mirrored ceiling Medicine cabinet with mirrored doors Amtico teak & holly flooring Granite vanity countertop with teak facing and mirror A/C and heat with register in soffit Exhaust fan with vent Shower light Stall shower Sink with Grohe faucet Towel bar and ring

Starboard Stateroom Temperature controlled a/c and heat Upper and lower berth Storage drawers located under hanging locker Stereo speakers recessed in soffit tied into salon stereo Upgraded twin mattress Quilted bedspreads Carpeting Hanging locker, cedar-lined Overhead Xenon lights and decorative rope lighting Built in overhead speakers Majellite wall covering

Crew Quarters Upgraded orthopedic mattresses Upper & Lower bunks Custom fabrics 20" LED flat screen television DVD player Access door to engine room Teak storage locker top Custom wallpaper

Stall shower Amtico teak and holly flooring Mirrored ceiling Silver shower & faucet fixtures, towel bars and rings Magnum Opus head Corian vanity countertop

Electronics Furuno FAR-2xx7 RADAR Ritchie compass Furuno FCV-1200 color sounder Northstar 6100i, Northstar 972, Garmin 5208 GPSMAN with chirp transducer (Tower) Monitors: 4 VEI (Flybridge), KEP monitor (Tower) KVH TracPhone ICOM CommandMic3 (tower and aft station) AIS: Furuno FA-150 Sounder: Furuno RD-30 Thermal Imaging: NVTI

A/V Equipment 40" Samsung LCD flatscreen (Master Stateroom) 35" LCD TV (Forward VIP Stateroom) 22" Flat screen (Port Guest Stateroom) 15' Sharp flat screen Direct TV Sony Blue-Ray (Salon) Sony Blue-Ray (Master) Sony Blue-Ray (Forward VIP Stateroom) Bose Home Theater 50" Fujitsu LED TV (Salon)

Galley Gaggenau – Cook Top Microwave: Sharp Refrigeration/Freezer: Subzero Ice Maker: Scottsman clear ice machine Stove: Ceran 4 burner Dishwasher: Kenmore (1) 110V outlet on bottom of upper cabinet Satin Galley faucet Custom Amtico teak & holly flooring Dimmers on overhead halogen lights Custom granite galley island with refrigeration and freezers Granite counter tops with 6" overhang for bar stool area Stainless steel sink Santin Kenmore Elite trash compactor 2x custom release bar stools with footrest

Dinette Dinette couch with removable cushions and storage underneath Companionway entrance located behind dinette Teak Dinette table with satin finish and single pedestal, thru bolted Companionway Bilge areas with awlgrip, access hatches and lit Carpeting and carpeted steps from galley through companionway Central vacuum unit connection with accessories Curved staircase with banister along starboard hull side Laundry center with Whirlpool stackable washer and dryer behind teak door Overhead Xenon lights recessed in headliner Water tank level gauge and pump indicator located in sub-panel

Cockpit Boarding box, fiberglass with nonskid, lift up top and storage Cable TV and telephone connections in cabinet under starboard gunwale Phone cable is CAT-5 to accommodate data phone systems Dockside electric connection in port and starboard cabinets Dockside water connection with pressure reducing valve Electric sliding salon door Engine room access hatch and door lock Observation mezzanine with starboard aft facing lounge seating with covered cushions Hinged seats with storage under lounge area Tackle cabinet with pullout drawers and large bait freezers New C-Worthy mezzanine seating with fabric and armrests Fresh water wash-down with hose bib 2x 12V outlets forward under coaming on each side Offset pedestal fighting chair (Release Marine) Reinforced stainless steel cleats Gaff storage in starboard side Electrical inlet box Self-bailing cockpit with large scuppers Side lockers Cockpit misters Recessed refrigerate chill box under-mounted in mezzanine step Gasket for all lids, doors and access doors Grab rails at cockpit haunch Ladder to flybridge with plastic treads "T" in dockside water inlet to fill water tank Transom door with lift gate Transom swim steps Y-valve for fresh & salt water wash-downs Eskimo ice machine with discharge in cockpit sole Livewell in cockpit box Saltwater supply & fitting with standard A/C pump for on-deck livewell Stainless steel and flush mounted rod holders Indirect lighting Additional hose bib to make R/O water out of dock water Dual thermostat for cockpit freezer Stainless steel gas springs for fish box, as well as sole port and starboard boxes Additional cable master Fish box macerator Lazzarette hatch with access to steering, trim tabs and drain pumps Circulation blowers in launch Hydraulic outrigger with cameras Outriggers mounted on flybridge Upgraded 1000 GPH for transom livewell

Deck Windlass: Lewmar RC 2500 Hydraulic w/250' rope and 25' chain Anchors: Fortress Anchor Chain: APP 30 Feet Fesh water washdown on bow inside anchor locker Bow pulpit

Life Rafts: Avon Life Rings: 1 EPIRBS: ACR Flares: ORION

Equipment Bowthruuster 2x Onan Generators, 27kw each 2x shorepower, 50A each Cruisair Tempered Water A/C Charles industries PM3 voltage stabilizer transformer Aquamatic Sea Recovery 1200 GPD watermaker w/ auto backflush Bennett Trim Tabs Teleflex steering Racor dual fuel/water filtration for main engines and generators Fuel transfer system, 220V AC pump w 24VDC backup Head Hunter fresh water system with plumbed backup Oil changing system Engine room entrance gauges installed into fiberglass Awlgrip brass thru-hulls and sea strainers Dual fuel filters painted snow white Backup sea water pump for air conditioning system Hydraulic emergency bilge pump manifold to forward engine room and cockpit bilges Access door to crew quarters Shelf over generator and second generator Total of 3 fuel tanks Dual power steering pumps on port engine Power assist hydraulic steering Five-bladed Veem NiBrAl propellers and spares NiBrAl struts Separ 2000 fuel filter inline on fuel transfer pumps 2 Aquamet high-strength stainless steel shafts Structural steel engine beds Delta T engine room ventilation system Second fuel transfer pump in parallel as back-up Trim tabs, dual piston with center tabs recessed in transom New 30 gallon electric water heater (3) engine cameras

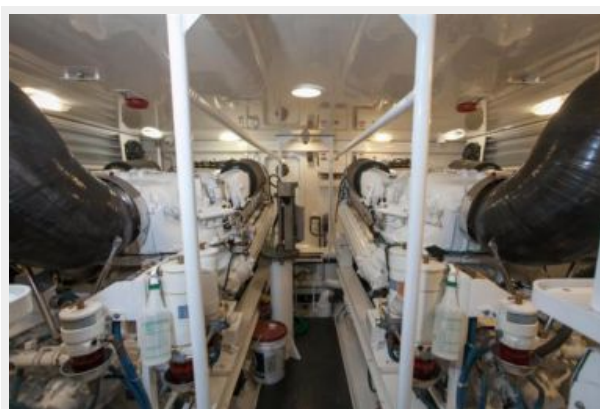
Исключения

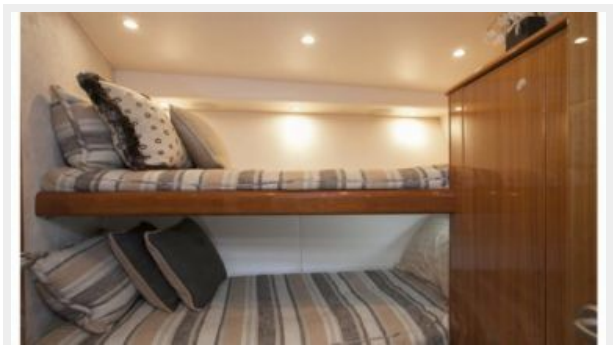
При продаже яхты исключаются личные вещи владельца.

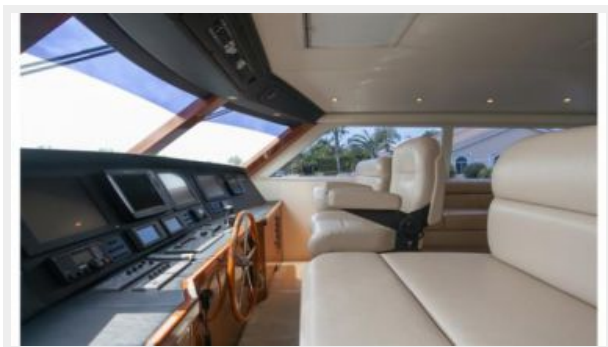
Отказ от ответственности

Компания предоставляет описание судна или яхты добросовестно, но не может гарантировать точность этой информации, а также не ручается за техническое состояние. Покупатель должен проинструктировать своих агентов или оценщиков исследовать представленную информацию более подробно, по собственному желанию. Продажа судна или яхты, изменение цены или снятие с продажи будет происходить без предварительного уведомления.

ФОТОГРАФИИ







КОНТАКТЫ

Андрей Шестаков (Andrey Shestakov) – ведущий яхтенный брокер отдела продаж яхт и судов компании Shestakov Yacht Sales Inc. Официальный представитель Shestakov Yacht Sales Inc. для русскоговорящих клиентов в центральном офисе компании в Майами/Форт Лодердейл/Флорида/США.

Контактная информация

Email: andrey@shestakovyachtsales.com

Web: shestakovyachtsales.com

Телефоны

Краснодарский край: **+7(918)465-66-44**

США, Майами, Флорида: **+1(954)274-4435**

Время работы

Понедельник – Суббота: **9:00 - 21:00**
EDT

Воскресенье: **Закрето**

Адрес



Harbour Towne Marina, 850 NE 3rd St,
STE 213, Dania, FL 33004