

420 SEDAN BRIDGE — SEA RAY



Builder: SEA RAY

Year Built: 2004

Model: Motor Yacht

Price: PRICE ON APPLICATION

Location: United States

LOA: 42' 0" (12.80m)

Beam: 14' 3" (4.34m)

Max Draft: 3' 8" (1.12m)

Our experienced yacht broker, Andrey Shestakov, will help you choose and buy a yacht that best suits your needs 420 Sedan Bridge — SEA RAY from our catalogue. Presently, at Shestakov Yacht Sales Inc., we have a wide variety of yachts available on our sale's list. We also work in close contact with all the big yacht manufacturers from all over the world.

If you would like to buy a yacht 420 Sedan Bridge — SEA RAY or would like help answering any questions concerning purchasing, selling or chartering a yacht, please call +1(954)274-4435

TABLE OF CONTENTS

TABLE OF CONTENTS	2
SPECIFICATIONS	3
Overview	3
Basic Information	3
Dimensions	3
Speed, Capacities and Weight	3
Accommodations	3
Hull and Deck Information	4
Engine Information	4
DETAILED INFORMATION	5
Vessel Description	5
Notable Exterior Features	5
Notable Interior Features	6
Galley	6
Electronics	6
Engines	7
Electrical	7
Exclusions	7
Disclaimer	7
PHOTOS	8
CONTACTS	10
Contact details	10
Telephones	10
Office hours	10
Address	10

SPECIFICATIONS

Overview

No matter where you plan to go, you'll arrive in style with the 420 Sedan Bridge. From its seamless fiberglass spoiler and Sunbrella® soft top, to its graphic striping at the water line, this impressive sport yacht is sure to command attention. And thanks to the power of its twin 8.3 Cummins Diesel engines no matter where you're headed, you'll arrive ahead of the rest. It's immediately apparent that the owner has maintained this boat to the very highest standards. She's in terrific shape cosmetically and mechanically.

Basic Information

Category: Motor Yacht

Sub Category: Flybridge

Model Year: 2004

Year Built: 2004

Country: United States

Dimensions

LOA: 42' 0" (12.80m)

Beam: 14' 3" (4.34m)

Max Draft: 3' 8" (1.12m)

MFG Length: 42' 0" (12.80m)

Speed, Capacities and Weight

Water Capacity: 120 Gallons

Holding Tank: 42 Gallons

Fuel Capacity: 350 Gallons

Accommodations

Total Berths: 4

Total Heads: 2

Hull and Deck Information

Hull Material: Fiberglass

Engine Information

Engines: 2

Manufacturer: Cummins

Model: 8.3L 6-CTA diesel

Engine Type: Inboard

Fuel Type: Diesel

DETAILED INFORMATION

Vessel Description

Blue Abyss is in immaculate condition. It was a fresh water boat in Tennessee and stored under cover until 3 years ago. The exterior shines like new and has always been polished and waxed each year. The interior is in similar condition, the cherry interior wood is all like new. The engines are 450 hp 8.3L Cummins 6CTA diesels with 800 original hrs. The 600 hr service has been done. Zincs were replaced, impellers replaced, coolant flushed and filled, belts replaced, upper set gapped, oil and filter service about 50 hrs ago, airsep filters cleaned and oiled, transmission fluid replaced 50 hrs ago. The generator is a Onan and is in like new condition with low hrs. Electronics include twin Raymarine touch screen chart plotters, autopilot, digital depth finder, AIS system, FLIR infrared camera, two backup cameras, bilge camera, Raymarine radar, bow thruster with new gel battery, VHF radio with DSC, hailing system, security system, all new gel house and starting batteries, lots of extra parts for cruising the Bahamas, under water blue lights, all LED interior lights, washer/ dryer, hot water heater, central vacuum, oil change system for engines and generator, engine synchronizer, salon VHF radio, long range wireless receiver, two heads with stall showers, sinks and vacu-flush heads, 50 amp power cord adapter, magna stainless steel bbq grill, flybridge sun covers and carpeting, search light, Clarion stereo system both inside the cabin and on the flybridge and back deck, Sirius radio, sirius weather, four flat screen TV's, KVH satellite dish, DVR, XBOX with two controllers, galley with refrigerator/ freezer, microwave/ convection oven, sink, electric two burner cooktop glass stove, pantry and built in coffeemaker. The couch converts into a fold out bed, the forward berth sleeps two and the mid ship berth sleeps two. The flybridge seating can also covert into a lounging pad. The anchor is an oversized Rocna style with Lofrans windlass including fly bridge and deck controls and sun pads for lounging. There is a lot of interior storage in cedar lined closets, cabinets and lockers. The fly bridge has a complete enclosure that can be opened if desired and the back deck has a removable full cover. There is a roll control system on the back deck that holds 10 scuba tanks and there is a folding swim ladder and hot shower on the transom. It really is an awesome vessel and will fly through survey.

Notable Exterior Features

- Stariway to bridge with drop down door
- Bow thruster
- Anchor windlass with bridge and foredeck controls
- Remote control spotlight
- Transom door
- Swim platform with SS boarding ladder
- Cockpit refrigerator

- Stainless steel BBQ
- 10 Tank roll control dive tank holders
- Underwater blue lights
- High quality dinghy chock system

Notable Interior Features

- Dual zone reverse cycle airconditioning
- Raised dinette with swing away table
- Washer Dryer combo
- Vacu-flush toilets
- Convertible salon sofa
- Large salon engine room floor hatches
- LED interior lights
- 4 Flat screen TVs

Galley

- Norcold dual voltage refrigerator with separate freezer
- Built in SS convection microwave oven
- 2 Burner cooktop stove
- Cherry wood galley floor
- Under stair washer dryer combo
- Molded countertops with designer accents
- Ample cabinets and storage

Electronics

- Raymarine E-120 wide hybrid touch screen radar/plotter
- Raymarine E-90 wide hybrid touch screen radar/plotter
- Raymarine ST70 Autopilot
- ICOM IC-M504 VHF radio with DSC and loud hailer
- Sea Ray systems monitor
- AIS system
- Satellite TV receiver
- Flir night vision camera
- Back up cameras
- Engine room camera
- Sirius radio and weather
- 4 Flat screen TV (one for flybridge)

Engines

- Twin 450 hp Cummins 6 CTA straight drive diesels with 800 hrs
- Onan 9kw diesel generator
- Glendinning engine synchronizer

Electrical

- Onan 9kw generator
- Dual 30 amp shore power inlets with cords
- Batteries recently replaced with gel-cell batteries
- Automatic battery chargers
- Electrical panel with circuit breakers and volt & amp meters

Exclusions

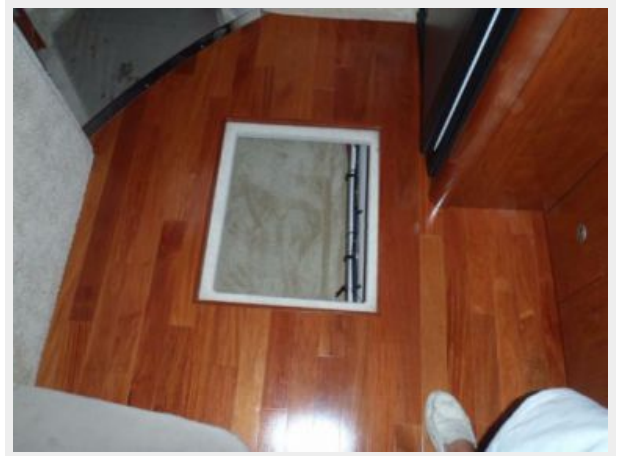
Owner's personal belongings.

Disclaimer

The Company offers the details of this vessel or yacht in good faith but cannot guarantee or warrant the accuracy of this information nor warrant the condition of the vessel. A buyer should instruct his representatives, agents, or his surveyors, to investigate such details as the buyer desires validated. This vessel or yacht is offered subject to prior sale, price change, or withdrawal without notice.

PHOTOS





CONTACTS

Andrey Shestakov, leading yacht broker of the sales department of Shestakov Yacht Sales Inc. Shestakov Yacht Sales Inc., the official representative of the Miami/Fort Lauderdale FL headquarters.

Contact details

Email: andrey@shestakovyachtsales.com

Web: shestakovyachtsales.com/en/

Telephones

USA: +1(954)274-4435

Office hours

Monday – Saturday: **9:00 - 21:00** EDT

Sunday: **closed**

Address



Harbour Towne Marina, 850 NE 3rd St,
STE 213, Dania, FL 33004