

YOUNG WON — HORIZON



Судостроитель: HORIZON

Год постройки: 2014

Модель: Моторная яхта

Цена: ЦЕНА ЯХТЫ ПО ЗАПРОСУ

Местонахождение: United States

Длина общая: 89' 0" (27.13m)

Ширина: 21' 0" (6.40m)

Макс. осадка: 5' 7" (1.70m)

Купить **Young Won — HORIZON** а также выбрать подходящую вам яхту из нашего каталога яхт вам поможет опытный яхтенный брокер Андрей Шестаков. На сегодняшний день компания **Shestakov Yacht Sales Inc.** имеет большое количество яхт в собственном списке продаж, а также тесно сотрудничает со всеми крупными яхтенными производителями по всему миру.

Для того чтобы купить яхту **Young Won — HORIZON** а также проконсультироваться по любому вопросу связанному с покупкой, продажей, чартером яхт позвоните по телефону **+7(918)465-66-44**.

ОГЛАВЛЕНИЕ

ОГЛАВЛЕНИЕ	2
ХАРАКТЕРИСТИКИ	4
Обзор	4
Основная информация	4
Размеры	5
Скорость, вместимость и масса	5
Размещение	5
Корпус и палуба	5
Информация о двигателе	5
ПОДРОБНОЕ ОПИСАНИЕ	6
Introduction	6
Vessle Walkthrough	6
Interior Overview	7
Galley	8
Crew Quarters	8
Main Dock & Superstructure	8
Forward & Aft Deck	8
Skylounge & Deck	9
Engine, Propulsion & Steering System	10
Mechanical Systems	10
Electrical Systems	11
Electronics	11
Исключения	13
Отказ от ответственности	13
ФОТОГРАФИИ	14
КОНТАКТЫ	22
Контактная информация	22
Телефоны	22

Время работы	22
Адрес	22

ХАРАКТЕРИСТИКИ

Обзор

Delivery available immediately!

As luxurious as she is functional, this yacht offers a 21' beam and spacious four stateroom layout with two separate crew accommodations. The skylounge is ideal for entertaining & lounging. Watersports are made easy with custom beach club and Hi/Lo swim platform which also carries the tender. The semi-gloss Teak wood, lacquer accents and custom interior décor and furniture seamlessly blend together for a modern comfortable atmosphere. A dayhead on the main deck and one in the skylounge provide convenience on all levels of this yacht both forward and aft. There is also a comfortable salon, formal dining and a country kitchen to ensure you will cruise in comfort and luxury wherever your travels may take you.

The knowledgeable owner of "Youngwon" personalized this Horizon Skylounge Yacht and created many custom features to incorporate his ideas into how this boat functions for all those aboard to enjoy. The voluminous beam creates a generous interior space for guests and crew as well as wide, safe walk around side decks. Her single main deck level allows for an uninterrupted transition between the salon and galley areas. Also of note is the upgraded interior modifications by Sylvia Bolton Design and Owner. This includes the Master headboard with custom sculptures that go with the Yacht. Also the Horizon shipyard and Owner collaborated and designed a sunbed that turns an unusable space over the upper deck stairwell glass door into a storage and lounging area.

- Fresh Water Moored
- Full Time Professional Captain
- Owner Moving Up

Основная информация

Тип судна: Моторная яхта

Модельный год: 2014

Год постройки: 2014

Страна: United States

Открытая палуба мостика: Да

Кубрик: Да

Размеры

Длина общая: 89' 0" (27.13m)

Ширина: 21' 0" (6.40m)

Макс. осадка: 5' 7" (1.70m)

Трапы: 29' 9" (9.07m)

Скорость, вместимость и масса

Водоизмещение: 192460 Pounds

Вместимость воды: 500 Gallons

Вместимость сточного бака: 200 Gallons **Объем топливного бака:** 2700 Gallons

Размещение

Всего кают: 4

Всего ком. состава: 6

Каюты экипажа: 2

Корпус и палуба

Материал корпуса: Fiberglass

Комплектация корпуса: Semi-Displacement

Цвет корпуса: White

Отделка корпуса: Fiberglass

Дизайнер корпуса: John Lindblom

Дизайнер интерьера: Sylvia Bolton

Информация о двигателе

Двигатели: 2

Производитель: CAT

Модель: C32ACERT

Тип двигателя: Inboard

Тип топлива: Diesel

ПОДРОБНОЕ ОПИСАНИЕ

Introduction

The newest addition to the mid-range E series is the 88 designed by John Lindblom. This model was designed specially with the popular enclosed bridge so the proportions and flow of the style lines are in keeping with the elegance of the overall design. The 21 foot beam allows for a generous salon and wide, safe side deck walk arounds. The formal dining area, country kitchen and abundance of natural light make the new 88 a stunning new addition to the E series lineup. Master plus three guest staterooms forward with dedicated crew aft allow for the flexibility of design to create the ideal yacht to suit your yachting lifestyle.

Since its inception, Horizon has defined, perfected and consistently exceeded the standards for design and craftsmanship in the world of 62 to 168 foot luxury yachts. We employ the most advanced technologies, the finest materials, and the most talented designers and builders in the world, whose creative vision, expertise and imagination all come together to bring your yachting dreams to life. Quality, durability, safety, value and customer satisfaction are our absolute minimum standards. So it is not surprising that Horizon yachts are celebrated and admired throughout the world for their unparalleled craftsmanship, innovative engineering, exceptional handling and spectacular beauty.

Vessle Walkthrough

This 2014 Horizon is fully equipped and highly customized, featuring 4 staterooms with en-suite baths, two additional day heads as well as two crew staterooms. The Main Salon opens with a custom stone inlay at the entrance and large stainless steel sliding doors to reveal a wide open and light filled space. An unobstructed view allows for one to see through to the Galley and forward through the forward windows. Upon entering, guests are greeted with customized furnishings by Sylvia Bolton Design, including a gorgeous sofa, custom leather loveseat and other custom accessories. There is a high quality home theater system and beautiful woodwork with all of the woodgrain matching perfectly. The customized windows to port and starboard have been modified to be as large as possible and fill the space with tons of natural light.

Moving forward, there is a buffet for storage and formal dining area that will seat 8 guests. There is a glass screen to partition off the galley area or leave it completely open. The galley is forward of the salon complete with a u shape and quartz countertops and Stainless Steel appliances, tons of storage and an additional dinette forward with a 360 view to the exterior. There are also doorways to access the outboard side decks and provide ventilation if necessary.

Stairs from this area lead both up to the skylounge and down to the staterooms. There are four staterooms below including a Master Full Beam Stateroom, VIP forward and two twin cabins all with their own baths. The master features ample light with custom windows, plenty of storage space, high ceiling and all the amenities you can think of. There are sliding doors to starboard

revealing a master complete with his and her space and double sinks as well. Forward of the Master stateroom to port and starboard are two guest staterooms with single berths, drawers and each with their own heads. The VIP Stateroom is located forward with a queen size walk around berth, full height hanging locker, overhead hatch and large windows. It is also equipped with its own private head and shower. The Crew's Quarters are accessed from the stern and has two staterooms, hanging lockers and a fully equipped head and shower as well as spacious seating areas and galley.

Interior Overview

- *****Custom Luxury Interior Package*****Premium Contemporary Finishes Package Includes: Lacquer finishes in Galley and Bathrooms, Upgraded Interior lights, upgraded interior fabrics, custom designed dining table, custom made granite floor at Salon Entrance. Additional upgrades and modifications were done by the Owner & Sylvia Bolton Design post delivery.
- Guest accommodations include Master Stateroom plus, port and starboard twin cabins (with sliding bed option) & VIP cabin, all with en-suite baths
- Crew area has two staterooms, full head, crew galley & dinette, with access from salon & transom. One of the crew cabins has a sliding bed option to convert twin beds into one queen.
- Teak semi-gloss wood on main deck & guest staterooms
- Dayhead in main salon as well as in the enclosed skylounge
- GE stacked washer/dryer in Crew's Quarters
- Upgraded Hotel Grande Innerspring Mattresses throughout
- Upgraded Music Sound System- Sono

Salon

- Leather L-shaped sofa, loveseat with red leather & custom chair
- Wine cooler
- Custom Hi/Lo glass screen separating salon & galley
- Custom Stone Inlay

Dining Room Area

- Custom dining table with 68 chairs

Skylounge

- Dual Stidd Helm Chairs
- Table top has been customized to a Walnut Satin Finish with leather inlay
- Day Head
- Complete Compliment of Electronics

Galley

- Upgraded Stone countertops & country kitchen tabletop (Granite: Blanco Aurora)
- Custom Glass retractable separator panel
- Forward U Shaped Dinette with upgraded upholstery
- Large Fisher Pikkol Refrigerator/Freezer
- Freezer drawers and refrigerator drawers
- Microwave
- Miele Coffee Maker
- Miele Plate Warmer
- Miele Steam Cooker
- Swivel Stools (2) in forward dinette

Crew Quarters

- Two Cabins
- ULine fridge/freezer
- GE microwave
- GE stacked washer/dryer
- Head and Separate Shower
- 2 Entrance/Exits

Main Dock & Superstructure

- White gel coat finish
- One-Piece hull SCRIMP cored lamination with deep skeg and longitudinal girders
- Solid fiberglass hull bottom
- High-density foam cored hull sides, decks and superstructure
- Stringers with high density foam coring
- Foam cored reinforcement for strength
- Interior structural components all properly bonded to hull
- Strong collision bulkhead for extra safety
- International brand anti-fouling bottom paint with anti-osmosis treatment

Forward & Aft Deck

- Non-skid forward deck
- TREND rub rail with stainless steel insert
- (2) Maxwell VWC4000 vertical hydraulic anchor winches
- (2) High tensile 1/2", 250' anchor chains
- (2) Anchor chain counters

- (2) Stainless Steel 80 kg anchors
- Freshwater anchor chain washdown
- Heavy-duty Stainless Steel 2" handrail with 1 1/4" stanchions
- (2) Deckhouse side entrance doors
- (4) Fiberglass bulwark side doors
- Side Decks with flush mounted deck lights
- Frameless windows, tinted Low-E tempered glass
- Custom-designed large "H" window in Master Stateroom
- Front deck with large comfortable sun pads
- Forward deck storage lockers for fenders and lines
- Teak aft deck, swim platform and teak steps
- Stainless Steel sliding door for main salon, self-locking
- Custom aft deck Hi/Lo satin finish teak dining table plus three teak chairs
- Aft deck corner fairleads
- Internal boat hook holders on aft deck
- Custom Hydraulic Swim Platform
- Removable Teak Chocks
- Built-in hot/cold water shower at swim platform
- Hydraulic Hi/Lo swim platform, 1500 lb/700KG load capacity
- Hydraulic full-width stern door & New "Beach Club" Area Layout
- (10) Stainless steel sockets on swim platform for handrails
- Bow Fiberglass step with cushion
- Black Mesh windshield covers

Skylounge & Deck

- Non-skid upper deck
- Custom Bar with Icemaker and large cooler drawer
- Removable Stainless Steel rails around boat deck
- Oversize drains with strainer on each corner with internal overboard drains
- Custom Sunlounge Chaise Lounge with Sunbrella Upholstery
- Custom removable sunshade with three triangular shaped canvas sections and removable Stainless Steel pole (Sunbrella Canvas fabric Yellow and Blue)
- (3) Custom S/S bar stools
- Custom Aft Deck wet bar with LED Lights
- Upgraded to Aritex 30" Propane Barbecue with two tanks
- Fiberglass radar arch
- Dual hatches on the hardtop
- (2) Tokai search lights
- Buell air horns on top of radar arch
- Helm console with full set engine gauges, monitoring system for equipment, fuel & water gauges, DANFORTH magnetic compass, bilge pump panel, & navigation lights
- Fully air conditioned enclosed bridge with two opening windows

- Custom instrument panel with 4 screens
- (2) Custom red Leather STIDD helm chairs
- Aft Deck TV Upgrade to 32" waterproof TV
- Day Head with custom design to match control construction

Engine, Propulsion & Steering System

- Upgraded Twin CAT C32A 1700HP Tier 2 diesel engines with reduction gears
- Stainless Steel shafts Aquamet 22HS
- Main & intermediate bronze struts with backing plates
- Shaft & rudder packing glands with Tides Marine seals
- Mini lower helm with controls and display screens on main deck
- Docking station on aft deck port side
- Mathers engine controls with backup system and remote control
- Hynautic power steering system
- S/S rudder with zinc plates
- S/S emergency tiller in rudder cabin
- Hydraulic ABT bow & stern thrusters, 46 HP
- Zero Speed Stabilizer 300/9x
- Bennett S/S hydraulic trim tabs
- Complete Delta-T engine room ventilation system
- Underwater exhaust system for engines with mufflers
- Engine mounts on S/S engine bed bonded to FRP hull girder
- Fire insulation & insulated ER door
- Engine alarm system for low oil pressure & high water temp
- Air compressor
- Central vacuum cleaner
- Skylounge generator gauge with start/stop button (2)
- SAT TV (KVH M9) & Dummy Dome

Mechanical Systems

- Watermaker "Sea Recovery" AQM Series 900 Gallons per Day
- Chilled water Marine Air- air conditioning Backup A/C circulation pump
- 2,700 gallon aluminum fuel tanks with sight & electric gauges
- Dual Racor 75/1000 MA fuel filters/water separator, each engine
- Electric fuel transfer pump plus one manual emergency spare pump
- Reverso FPS210 fuel polishing system
- Oil change pump system for engines & generator
- 500 gallon fiberglass water tanks
- High-volume AC fresh water pressure pump & back up DC pump
- Fresh water charcoal filters in main supply pipe & galley

- Marine grade lines for fresh water system
- (2) 30 gallon water heaters
- Hot water circulation pump
- Hamann sanitary waste treatment system
- Tecma toilet system
- 200 gallon holding tank with macerator pump
- 100 gallon sump tank
- "Y" valve for holding tank with deck fitting for dockside pump out
- Five electric RULE bilge pumps
- (2) Manual bilge pumps in Engine Room and forward cabin
- Bilge exhaust ventilation fans
- Fixed fire extinguisher (FM 200) for ER with remote control
- Auto shutdown system
- Automatic fire damper system
- (4) Portable fire extinguishers in recessed lockers

Electrical Systems

- LED lighting system throughout interior & exterior
- Upgrade to Boning System integrated monitoring system including: Tanks level gauges and sensors, Fuel Tanks high level alarm, Navigation lights control and monitoring, video camera and Bilge/shore power/inverter/generator indicators.
- (2) Onan 27.5kW generators with sound shield (Port-364 Hours, Starboard 350 Hours)
- 100A shore power system with (2) 50A cable masters & (2) 50A ISO boost transformers
- (2) 50A shorepower plugs on forward deck
- (2) House battery inverter/charger Xantrex XW4024
- Vapor proof battery switch
- (4) Engine start batteries 255Ah AGM with Charles charger
- (8) 210Ah AGM batteries for boats DC 24V service power
- (2) 210Ah emergency batteries with dedicated Charles charger
- Generator gauge with (2) start & stop buttons on Flybridge
- GFI protection for all AC outlets in heads, galley and Engine Room
- Electrolysis bonding system
- Cathodic protection with zinc anodes for shafts, struts etc.
- Upgrade to 6 Underwater lights
- (2) Stern Docking lights

Electronics

- Panasonic PBX Telephone with intercom feature in salon, pilothouse, master, VIP & crew mess
- Exterior connector for shore phone & TV

- KVH HD7 satellite TV antenna & dummy dome
- Wifi booster system with wireless routers

Aft Deck

- Upgraded waterproof outdoor TV to 32" Samsung LED TV
- Bose Lifestyle SA-3 stereo system

Salon

- 50" Samsung LED TV
- Bose Lifestyle V35 home theater system with iPod dock

Galley

- 32" Samsung LED TV
- Bose Lifestyle SA-3 stereo system
- Vintec Wine Cooler

Master Stateroom

- 40" Samsung LED TV
- Bose Lifestyle 135 home theater system with iPod dock
- Samsung Blu-ray player

VIP Stateroom

- 32" Samsung LED TV
- Bose Lifestyle 135 home theater system with iPod dock
- Twin Guest Staterooms (2)
- 28" Samsung LED TV
- Fusion Stereo system

Port Guest 22" TV

Starboard Guest Prewired for TV

Crew Mess 26" TV

Crew Cabin 22" TV

Navigation

- Raymarine GPS Raystar 125 Plus (4) 16" Touch Screens
- Raymarine Fishfinder
- Raymarine Autopilot
- Raymarine ST70 multifunction displays
- Raymarine Wind and speed transducers

- Raymarine AIS500 AIS
- Raymarine VHF
- Raymarine Loudhailer

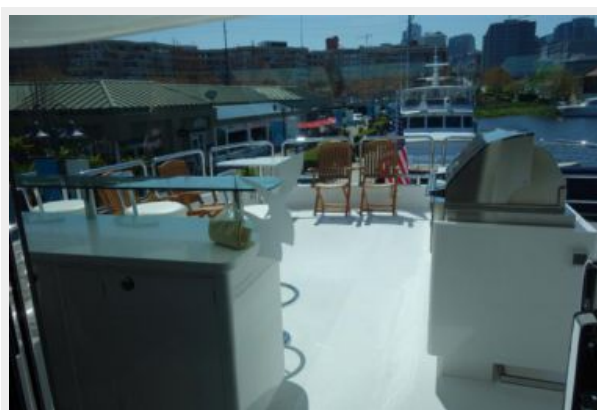
Исключения

При продаже яхты исключаются личные вещи владельца.

Отказ от ответственности

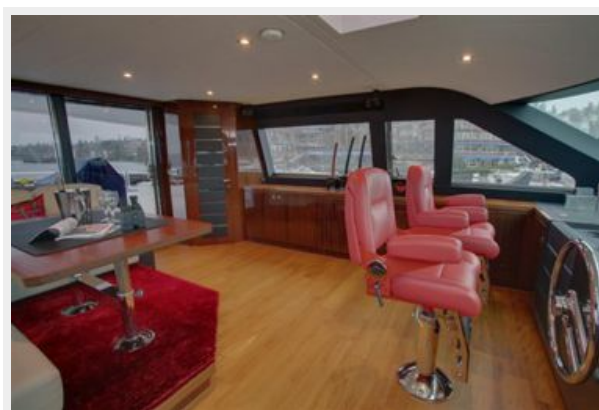
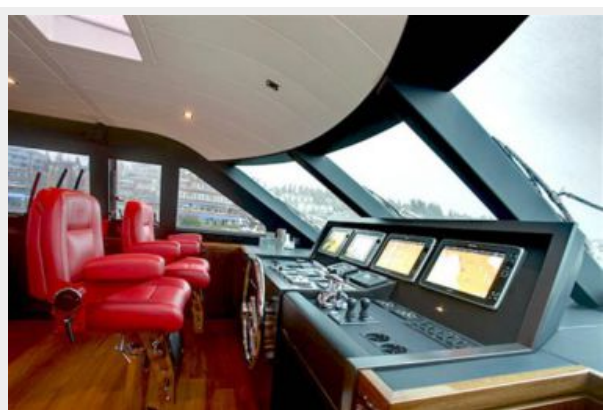
Компания предоставляет описание судна или яхты добросовестно, но не может гарантировать точность этой информации, а также не ручается за техническое состояние. Покупатель должен проинструктировать своих агентов или оценщиков исследовать представленную информацию более подробно, по собственному желанию. Продажа судна или яхты, изменение цены или снятие с продажи будет происходить без предварительного уведомления.

ФОТОГРАФИИ

















КОНТАКТЫ

Андрей Шестаков (Andrey Shestakov) – ведущий яхтенный брокер отдела продаж яхт и судов компании Shestakov Yacht Sales Inc. Официальный представитель Shestakov Yacht Sales Inc. для русскоговорящих клиентов в центральном офисе компании в Майами/Форт Лодердейл/Флорида/США.

Контактная информация

Email: andrey@shestakovyachtsales.com

Web: shestakovyachtsales.com

Телефоны

Краснодарский край: **+7(918)465-66-44**

США, Майами, Флорида: **+1(954)274-4435**

Время работы

Понедельник – Суббота: **9:00 - 21:00**
EDT

Воскресенье: **Закрито**

Адрес



Harbour Towne Marina, 850 NE 3rd St,
STE 213, Dania, FL 33004