

SUNSATIION — RIVIERA



Судостроитель: RIVIERA

Год постройки: 2006

Модель: Катер для спортивной рыбалки

Цена: ЦЕНА ЯХТЫ ПО ЗАПРОСУ

Местонахождение: United States

Длина общая: 51' 0" (15.54m)

Ширина: 16' 2" (4.93m)

Макс. осадка: 4' 6" (1.37m)

Крейс. скорость: 29 Kts. (33 MPH)

Макс. скорость: 35 Kts. (40 MPH)

Купить **Sunsatation — RIVIERA** а также выбрать подходящую вам яхту из нашего каталога яхт вам поможет опытный яхтенный брокер Андрей Шестаков. На сегодняшний день компания **Shestakov Yacht Sales Inc.** имеет большое количество яхт в собственном списке продаж, а также тесно сотрудничает со всеми крупными яхтенными производителями по всему миру.

Для того чтобы купить яхту **Sunsatation — RIVIERA** а также проконсультироваться по любому вопросу связанному с покупкой, продажей, чартером яхт позвоните по телефону **+7(918)465-66-44**.

ОГЛАВЛЕНИЕ

ОГЛАВЛЕНИЕ	2
ХАРАКТЕРИСТИКИ	3
Основная информация	3
Размеры	3
Скорость, вместимость и масса	3
Размещение	3
Корпус и палуба	3
Информация о двигателе	4
ПОДРОБНОЕ ОПИСАНИЕ	5
Vessel Information	5
Исключения	10
Отказ от ответственности	11
ФОТОГРАФИИ	12
КОНТАКТЫ	18
Контактная информация	18
Телефоны	18
Время работы	18
Адрес	18

ХАРАКТЕРИСТИКИ

Основная информация

Тип судна: Катер для спортивной рыбалки

Подкатегория: Convertible

Модельный год: 2007

Год постройки: 2006

Страна: United States

Размеры

Длина общая: 51' 0" (15.54m)

Ширина: 16' 2" (4.93m)

Макс. осадка: 4' 6" (1.37m)

Скорость, вместимость и масса

Крейс. скорость: 29 Kts. (33 MPH)

Макс. скорость: 35 Kts. (40 MPH)

Вместимость воды: 227 Gallons

Вместимость сточного бака: 40 Gallons

Объем топливного бака: 977 Gallons

Размещение

Всего кают: 3

Корпус и палуба

Материал корпуса: Fiberglass

Информация о двигателе

Двигатели: 2

Производитель: CAT

Модель: C18

Тип двигателя: Inboard

Тип топлива: Diesel

ПОДРОБНОЕ ОПИСАНИЕ

Vessel Information

This is a great opportunity to own a like new 51 Riviera with low time at a great price. The seller has identified his next boat and seriously encourages reasonable offers. She is loaded with the finest in electronic gear and has the preferred Caterpillar C-18 engines with only 314 hrs. Captain maintained and recent bottom job make her turn key for the summer. Vessel Walkthrough

The solid hand-laid fiberglass hull, together with collision bulkheads, inspire confidence. The closer you inspect this vessel, the more in awe of her you will be. The attention to detail, the ergonomic design, the thought that has gone into making life aboard as easy and pleasurable as possible.

Hand molded fiberglass hull, decks, cabin top and hull sides are cored for better weight/performance.

- Vinylester resin in first layer of hull
- Watertight collision bulkhead forward
- Independent compartments throughout hull
- Gelcoat exterior
- Solid keel, chines and bottom

Salon

The light face of teak timber, a theme that runs throughout the interior, contributes to an ambience of contemporary elegance. Wherever you look, there is something to admire: the promise of supreme comfort in the large, deep lounge; the generous proportions of the dining area; the amount of storage room will impress even those planning on the longest voyage with a full complement of passengers. It's those little details that make a big difference - like the high ceiling, and the grab rail that is recessed into the ceiling and on the topic of ceilings, press a button and a section folds down to reveal a home for your fishing rods or other items that need to be stowed away. Everything, from the flatscreen TV, DVD player and Bose surround sound system to the icemaker and wine cooler, tells you that our standard inclusions set a new standard in luxury cruising.

- Icemaker in saloon with inline water filter
- Pull out bed
- Built-in storage lockers to starboard
- Central vacuum system - one outlet
- Safety monitoring panel shows bilge pumps, sump pump, navigational lights, engine room lights
- Engine hatches are insulated & removable
- Lounge with storage under (port side)

- Wine cooler
- Air conditioning with reverse cycle heat
- Rod storage in headliner- electric open and close

Galley

The galley is equally impressive. Positioned in such a way that the chef is still a part of the party, it features ingenious storage and all the equipment and room needed to prepare the most elaborate of dishes. As for the quality of the fittings, what else would you expect but Corian for benchtops and Grohe for tapware.

- Access hatch to storage under galley floor
- Electric cooktop, dual element
- Grab rail down steps to cabins
- Lights under galley to servery top
- Microwave convection oven
- Refrigerator under bench (x2), freezer (x2). AC only
- Exhaust fan
- Garbage bin
- Trash compactor
- Additional freezer under microwave
- Light (DC) under galley floor on micro switch
- Overhead DC lighting
- Full height pantry
- Receptacle, AC duplex
- Storage cabinets and drawers
- Air conditioning with reverse cycle heat
- Separate stacked washer/dryer

Master Stateroom

The generous proportions of the Master Stateroom have allowed us to give you the luxury of a larger than average bed with a proper innerspring mattress. The ensuite head has been meticulously designed with a large Corian topped vanity and a shower that actually lets you move around.

- Air conditioning with reverse cycle heat.
- LCD TV 20" and DVD player
- Hanging locker with lighting
- Headboard - upholstered mirror above
- Queen walk around berth with innerspring mattress
- Storage under berth including drawers and gas struts for easy access

VIP Stateroom - Forward

The guest stateroom retains the sophisticated, contemporary look of the saloon and with a flat screen TV and DVD player. The platform on which the bed sits now also features drawers underneath and lifts on gas struts to allow access to further storage. This second stateroom is again superbly furnished, sizeable and wonderfully comfortable - in fact, it is superior to the Master Stateroom found on many competing vessels.

- Air conditioning
- Queen walk around berth with innerspring mattress
- Storage under berth including drawers and gas struts for easy access
- LCD TV 20" and DVD player
- (2) Hanging lockers with lighting
- Headboard - upholstered (premium fabric)
- Storage cabinets overhead with positive locking hardware

VIP Head

- Similar to the master head this is even more ingeniously designed. With two door access it can serve as an ensuite off the second stateroom or for general use off the below-decks passageway.
- Air conditioning with reverse cycle heat.
- Vacuflush toilet (fresh water) with holding tank with Y valve & deck fitting for dockside and overboard pump out with lockable ball valve (all in engine room)
- Exhaust Fan
- Shower stall with glass partition, light (DC), automatic sump pump, shower head

Guest Stateroom -Port

- The cabin, so often looking like something squeezed in as an after thought on other boats, offers an unusual level of comfort and, in typical Riviera style, the creative use of space is sure to impress you.
- Air conditioning
- Hanging locker with lighting
- Upper & lower berths (foam mattresses) with storage under

Flybridge

A flybridge that is tough enough to weather the storm but flexible enough to take full advantage of fine weather is one reason why the 51 is an ideal all-seasons cruiser or gamefisher. This is no flimsy open flybridge. She has robust stainless steel supports and solid hardtop that contributes to a very substantial feeling. To cater for your family and friends there's a large table complete with drink holders, quality seating, CD player, wet bar and fridge. There's loads of storage space, special glass racks, and adjustable table that converts to a bed, and a locker for the garbage bin. You even have the option to air condition the bridge!

- Air conditioning
- Hot & cold tap at sink
- Lighting: Overhead, courtesy and red night light
- Storage tray to suit 10 glasses, trash bin under
- Lockable hatch to flybridge
- Refrigerator (12V)
- Flybridge table converts to queen bed
- Custom Pipewelders hardtop w/ Isinglass
- Cover for lounge and settee

Custom half tower hardtop with:

- Radar mounting pod
- (2) 110 Volt spreader lights molded in hardtop
- Combination nav/anchor lights
- Red recessed light
- Nav lights molded in hardtop
- (6) Rod holders on back rail
- 3-sided EZ2CY fronts and Strataglass sides with u-zips
- RUPP triple spreader outriggers

Helm

With this new-style helm station the layout of the controls and displays is reminiscent of a luxury European car: clean, uncluttered and with everything as visible and accessible as possible. There are two immensely comfortable and fully adjustable helmseats.

- Compass- 4.75" with light
- Engine control unit, single lever gear & throttle, twin lever unit
- Visual & audible signal for bilge high water
- Chain counter
- Dash cover (Brella White)
- Helm & companion chair, teak ladderback with footrests and brella white covers

Electronics

- Sat TV
- (2) Furuno Navnet 15" Displays
- Furuno 64 mile open array radar
- Garmin 7215
- Camera system
- Clarion AM/FM/CD/Satellite Radio
- Simrad AP 26
- Simrad Digital Depth
- ICOM VHF Radio
- KVH Trac Phone

- Sat TV
- Computer hookup
- Wireless router

Cockpit

- This cockpit is a wonderfully large open space and naturally equipped with a fridge, sink, live bait tank, and plenty of storage for fold-away furniture, watersports accessories, or the catch of the day.
- Access ladder to flybridge
- Cockpit and floor hatches have molded gutters that drain overboard at the stern
- Double action manual bilge pump for engine room in cockpit locker
- Grab rails to assist access to side decks
- Hot & cold tap with sink, molded GRP
- Lighting spotlights- overhead and courtesy
- Shore water connection with pressure regulator
- Storage bin in cockpit floor with pump-out
- Wash down tap, seawater
- Live bait tank in transom with pick up & circulating pumps, window and bait prep station under lift-up lid
- Cockpit floor reinforced with alloy plate for future game chair or table
- Cockpit hatches with heavy-duty stainless steel lock downs with gas struts for lazarette storage and bilge access
- Engine room access (lockable) with grab rail to assist entry
- Fresh water shower, hot and cold hand held wand
- Large removable fish box including 2 hatches & pumpout facility, gas struts on hatches
- Refrigerated cabinet portside, top loading with lid and gas strut (DC)
- Steps to side deck port & starboard
- Wash-down tap, freshwater
- Rocket launcher with (4) rod holders, tray, drink holders, and gimbal

Electrical

- Generator - Onan EQD 21.5kw with water separating muffler, fresh water-cooled, including sound shield, remote stop/start diagnostic, hour meter.
- Alternators-independent start bank and independent house bank
- New Batteries - (4) independent start, (2) house and genset start
- Battery paralleling system
- Electrical control center with back lighting AC/DC thermal/magnetic circuit breakers, voltmeters, amp meter
- Wires coded, numbered and loomed
- Battery chargers, automatic-70 AMP/12VDC and 20 AMP/24VDC
- Bonding system, to all metallic hull fittings with zinc anode including galvanic isolator
- Engine monitoring including instrumentation, alarms and hour meters
- System monitoring panel to helm for bilge pumps and navigation lights

- Shoreline electrical inlet (AC) Glendinning (220V/50amp) (Split 2 x 110v)

Deck Equipment

- For the dedicated sun worshippers, the foredeck is big enough to accommodate you, your friends - and a sizeable dinghy and crane. Anchor 80 lb plough, (4) dock lines, (4) fenders, and boat hook.
- Vertical anchor winch with overload protection circuit breaker, rope and chain, up and down foot switches and remote to helm
- Rails port & starboard of flybridge above window for safe passage to forward deck
- Sea water wash down tap at anchor locker
- Anchor locker with watertight bulkhead to cabin, access on deck
- Heavy duty bow roller stainless steel self-loading - thru bowsprit
- Underwater exhaust

Mechanical

Twin C18 Caterpillars with twin disc, 35 knots and a cruising speed of around 29 knots.

- Acoustic & thermal insulation
- Emergency rudder locking pins
- Engine fresh water cooling system
- Engine room flow - coated white
- Exhaust system - with water separator system for generators
- Fiberglass aqualift exhaust system for engines
- Fire suppression system for engine room, manual controls to helm
- Oil change system main engines, gearboxes & generator
- Shafts duplex stainless (2) dripless PSS seals
- Trim tabs, electro-hydraulic dual ram
- Water separating venting system for engine air intakes
- Bow thruster
- External & internal seawater strainers for main engines, generator (as installed) & air conditioning (as installed) water intakes
- Fresh water tap & hose set in engine room
- Fuel shut-off valves with emergency remote to cockpit
- Fuel tank, GRP coated in fire retardant white, 977 US Gallons (approx)
- Inline water filter to galley located in engine room
- Propellers, nibral five blade (2) Veems
- Rudders, stainless steel stocks, aluminium bronze blades with zinc anodes
- Fuel filters/water separator for engines & generator, dual to main engines

Исключения

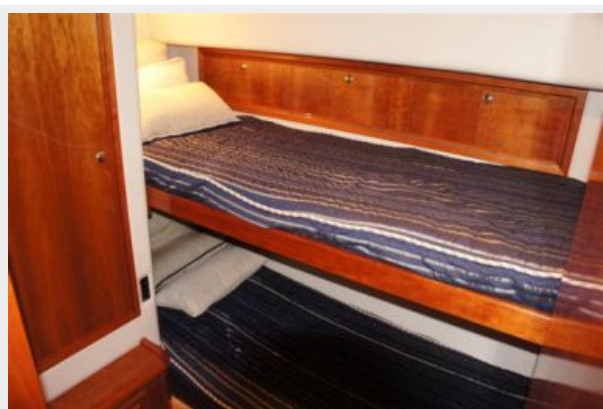
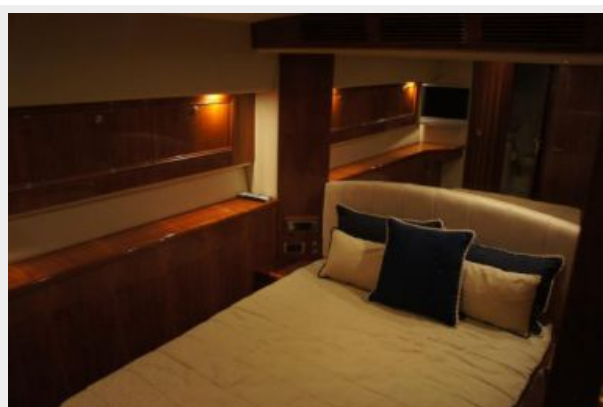
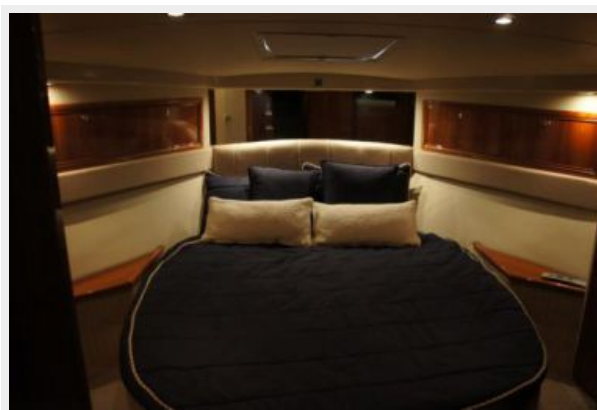
При продаже яхты исключаются личные вещи владельца.

Отказ от ответственности

Компания предоставляет описание судна или яхты добросовестно, но не может гарантировать точность этой информации, а также не ручается за техническое состояние. Покупатель должен проинструктировать своих агентов или оценщиков исследовать представленную информацию более подробно, по собственному желанию. Продажа судна или яхты, изменение цены или снятие с продажи будет происходить без предварительного уведомления.

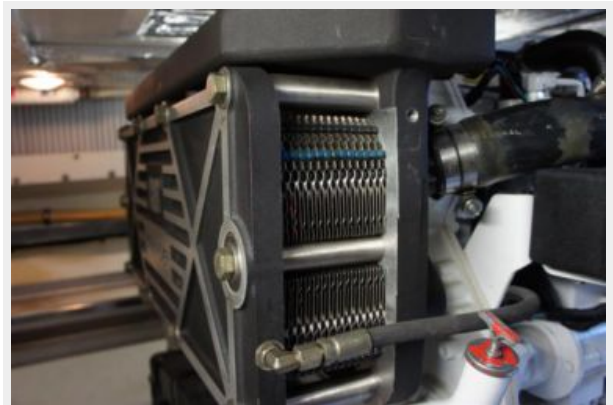
ФОТОГРАФИИ

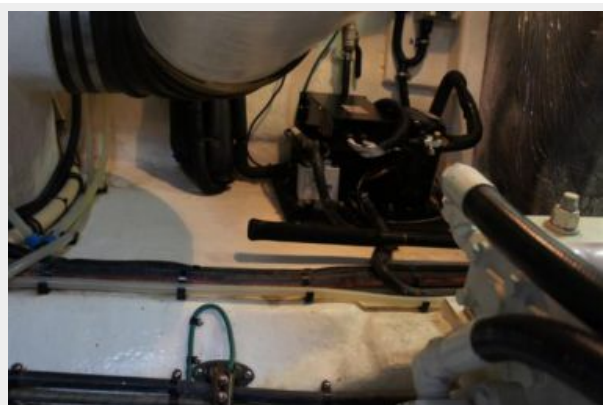












КОНТАКТЫ

Андрей Шестаков (Andrey Shestakov) – ведущий яхтенный брокер отдела продаж яхт и судов компании Shestakov Yacht Sales Inc. Официальный представитель Shestakov Yacht Sales Inc. для русскоговорящих клиентов в центральном офисе компании в Майами/Форт Лодердейл/Флорида/США.

Контактная информация

Email: andrey@shestakovyachtsales.com

Web: shestakovyachtsales.com

Телефоны

Краснодарский край: **+7(918)465-66-44**

США, Майами, Флорида: **+1(954)274-4435**

Время работы

Понедельник – Суббота: **9:00 - 21:00**
EDT

Воскресенье: **Закрыто**

Адрес



Harbour Towne Marina, 850 NE 3rd St,
STE 213, Dania, FL 33004