

## MOTIVATOR — DEFEVER



**Builder:** DEFEVER

**Year Built:** 2005

**Model:** Motor Yacht

**Price:** PRICE ON APPLICATION

**Location:** United States

**LOA:** 49' 0" (14.94m)

**Beam:** 15' 0" (4.57m)

**Max Draft:** 4' 7" (1.40m)

**Cruise Speed:** 8 Kts. (9 MPH)

**Max Speed:** 10 Kts. (12 MPH)

Our experienced yacht broker, Andrey Shestakov, will help you choose and buy a yacht that best suits your needs **Motivator — DEFEVER** from our catalogue. Presently, at Shestakov Yacht Sales Inc., we have a wide variety of yachts available on our sale's list. We also work in close contact with all the big yacht manufacturers from all over the world.

If you would like to buy a yacht **Motivator — DEFEVER** or would like help answering any questions concerning purchasing, selling or chartering a yacht, please call **+1(954)274-4435**

# TABLE OF CONTENTS

TABLE OF CONTENTS	2
SPECIFICATIONS	7
Overview	7
Basic Information	7
Dimensions	7
Speed, Capacities and Weight	7
Accommodations	8
Hull and Deck Information	8
Engine Information	8
DETAILED INFORMATION	9
49' DeFever Vessel Walkthrough	9
49' DeFever Accommodations	9
49' DeFever Salon	9
49' DeFever Galley	9
49' DeFever Dining	10
49' DeFever Master Stateroom	10
49' DeFever Guest Stateroom	10
49' DeFever Laundry Room	10
49' DeFever Flybridge	10
49' DeFever Sundeck	10
49' DeFever Cockpit	11
49' DeFever Audio/Visual Equipment	11
49' DeFever Electronics	11
49' DeFever Electrical System	12
49' DeFever Engine/Mechanical Equipment	12
49' DeFever Deck Equipment	13
49' DeFever Tender	13
49' DeFever Fire & Safety Equipment	13

49' DeFever Exclusions	14
49' DeFever Disclaimer	14
Exclusions	14
Disclaimer	14
PHOTOS	15
49' DeFever starboard forward profile photo2	15
49' DeFever port profile	15
49' DeFever anchor windlass	15
49' DeFever foredeck	15
49' DeFever foredeck aft	16
49' DeFever foredeck storage	16
49' DeFever port side deck photo1	16
49' DeFever port side deck photo2	16
49' DeFever starboard side deck photo1	17
49' DeFever starboard side deck photo2	17
49' DeFever flybridge forward	17
49' DeFever flybridge aft	17
49' DeFever flybridge port	17
49' DeFever flybridge starboard	17
49' DeFever flybridge helm	18
49' DeFever flybridge port aft	18
49' DeFever flybridge port aft seating	18
49' DeFever flybridge starboard aft	18
49' DeFever tender photo1	18
49' DeFever flybridge starboard aft seating	18
49' DeFever tender photo2	19
49' DeFever tender photo3	19
49' DeFever tender covered	19
49' DeFever sundeck photo1	19

49' DeFever sundeck photo2	19
49' DeFever sundeck port	19
49' DeFever sundeck starboard	20
49' DeFever sundeck forward	20
49' DeFever cockpit	20
49' DeFever cockpit port	20
49' DeFever cockpit starboard	20
49' DeFever cockpit forward	20
49' DeFever swimplatform	21
49' DeFever salon forward	21
49' DeFever salon aft	21
49' DeFever salon port	21
49' DeFever salon starboard lounge chair photo1	21
49' DeFever salon starboard	21
49' DeFever salon starboard lounge chair photo2	22
49' DeFever salon starboard cabinetry	22
49' DeFever galley photo1	22
49' DeFever salon bar	22
49' DeFever galley photo2	23
49' DeFever galley photo3	23
49' DeFever lower helm photo2	23
49' DeFever lower helm photo1	23
49' DeFever lower helm photo3	23
49' DeFever lower helm electronics	23
49' DeFever master stateroom	24
49' DeFever master stateroom port	24
49' DeFever master stateroom starboard	24
49' DeFever master stateroom forward	24
49' DeFever master stateroom desk	24

49' DeFever master stateroom head	24
49' DeFever master stateroom shower	25
49' DeFever guest stateroom	25
49' DeFever guest stateroom head	25
49' DeFever guest stateroom lockers	25
49' DeFever guest stateroom shower	26
49' DeFever washer-dryer	26
49' DeFever engine room forward	26
49' DeFever engine room aft	26
49' DeFever port main engine	26
49' DeFever port Racor fuel filters	26
49' DeFever starboard main engine	27
49' DeFever starboard Racor fuel filters	27
49' DeFever fuel purifier system	27
49' DeFever fuel manifold	27
49' DeFever sea chest	28
49' DeFever stabilizer system	28
49' DeFever engine room work bench	28
49' DeFever water heater	28
49' DeFever electrical panel	29
49' DeFever watermaker	29
49' DeFever 12.5 kW generator soundbox	29
49' DeFever 12.5 kW generator	29
49' DeFever 12.5 kW generator Racor fuel filter	30
49' DeFever 5 kW generator soundbox	30
49' DeFever 5 kW generator Racor fuel filter	30
49' DeFever 5 kW generator	30
49' DeFever inverter/charger	31
49' DeFever battery charger	31

49' DeFever hauled out	31
CONTACTS	32
Contact details	32
Telephones	32
Office hours	32
Address	32

# SPECIFICATIONS

## Overview

### Stabilized 2005 49' DeFever CPMY

Motivator is a 2005 49' DeFever CPMY (Also known as the 44 + 5 model) and she is turn-key. The DeFever 44 + 5 model combines the popular sundeck layout, aft full-beam master stateroom with a large flybridge and cockpit, so there are rarely many of these on the market at any particular time due to their popularity. Motivator stands out because of her condition and numerous upgrades, like her electronics, audio/visual equipment, watermaker, two generators, Naiad stabilizers and dual anchor arrangement. Her sellers have completed their multi-year Caribbean cruise and moved ashore, so Motivator is now available for sale. She is rigged for extended offshore cruising, but she is just as suited for cruising the Great Loop.

## Basic Information

**Category:** Motor Yacht

**Sub Category:** Cockpit

**Model Year:** 2005

**Year Built:** 2005

**Country:** United States

**Vessel Top:** Bimini Top

**Fly Bridge:** Yes

**Cockpit:** Yes

## Dimensions

**LOA:** 49' 0" (14.94m)

**LWL:** 43' 6" (13.26m)

**Beam:** 15' 0" (4.57m)

**Max Draft:** 4' 7" (1.40m)

## Speed, Capacities and Weight

**Cruise Speed:** 8 Kts. (9 MPH)

**Max Speed:** 10 Kts. (12 MPH)

**Displacement:** 54000 Pounds

**Water Capacity:** 370 Gallons

**Holding Tank:** 40 Gallons

**Fuel Capacity:** 1100 Gallons

## Accommodations

Total Cabins: 2	Total Berths: 3
Sleeps: 4	Total Heads: 2

## Hull and Deck Information

Hull Material: Fiberglass	Deck Material: Composite Fiberglass
Hull Configuration: Modified Deep Vee	Hull Color: White
Hull Finish: Stainless Steel	

## Engine Information

Engines: 2	Manufacturer: Perkins
Model: Sabre M135	Engine Type: Inboard
Fuel Type: Diesel	



---

# DETAILED INFORMATION

---

---

## 49' DeFever Vessel Walkthrough

---

Entering from the swimplatform through the starboard transom door into the cockpit, you step up into the Eisinglass enclosed sundeck. You can then step up to the flybridge, walk out either side deck or enter the salon door and down several steps to the salon with the galley to port. Walking forward, there is cabinetry starboard aft, a lounge chair and ottoman to starboard and the lower helm with side deck access door starboard forward. To port, forward of the galley, there is a port side deck access door and a sofa with two ottomans. The full beam master stateroom is aft and the guest stateroom is forward. This is the only 49' DeFever CPMY I have seen with an enclosed shower in the guest ensuite head. The engine room access is through a door in the starboard aft side of the guest stateroom.

---

## 49' DeFever Accommodations

---

The 44 + 5 DeFever offers a full beam master stateroom aft with ensuite head and a guest stateroom forward with ensuite head and over/under bunks. There are custom mattresses with memory foam on the guest berths. Each full head includes a separate shower and Corian countertops.

---

## 49' DeFever Salon

---

The spacious salon on the DeFever 44 + 5 offers a side deck access door port aft, another side deck access door at the lower helm starboard forward a sundeck access door aft. There is a sofa with two ottomans to port (Re-upholstered in 2013), a lounge chair and ottoman to starboard (Re-upholstered in 2013), portable helmseat/bar stool and storage cabinetry with a bar starboard aft. The large side and forward windows offer loads of natural light. There are also Phantom roll-away screens on the two side doors, custom draperies and Teak parquet soles throughout.

---

## 49' DeFever Galley

---

- Seaward Princess 3347 electric stove with Ceran glass 3-burner cooktop - Broan trash compactor - Tundra T80 ac/dc 8 cu. ft. refrigerator/freezer - Tundra TF20 AC/DC 2.0 cu. ft. freezer
- Amana Radarrange microwave oven
- Cooks Toast R Oven - Double stainless steel sink - Corian countertops
- Dry storage

- Storage cabinets and drawers
- 2 opening windows
- Raritan icemaker on the sundeck (2013)

---

## 49' DeFever Dining

---

Dining space is available on the sundeck and the flybridge.

---

## 49' DeFever Master Stateroom

---

The full beam master stateroom is located aft and includes a centerline queen berth, 6 portlights, 2 transom hatches, curtains, ensuite head with enclosed shower, full-length mirror, desk/vanity, nightstands, reading lights, fans, teak & holly sole, walk-in closet, hanging locker and storage cabinets.

---

## 49' DeFever Guest Stateroom

---

The guest stateroom is located forward with over/under bunks, portlights, overhead deck hatch, hanging locker, fans, storage cabinets and drawers and an ensuite head. The head includes a separate shower and Corian countertop with molded-in sink.

---

## 49' DeFever Laundry Room

---

The Bosch WFL 2060 washer and WTA 3510 240vac dryer are located in the walk in closet in the master stateroom.

---

## 49' DeFever Flybridge

---

The huge flybridge on this 44 + 5 model includes two Tracy helm seats, forward and side benchseats with storage underneath, bimini and Eisinglass enclosure and full electronics at the helm which also has storage underneath. There is a non-skid deck, hi/lo table and the arch is hinged.

---

## 49' DeFever Sundeck

---

Motivator offers the popular massive sundeck and this one is fully enclosed with canvas,

Eisinglass and screens. There are no teak decks and the non-skid is in very good condition. The steps to the flybridge are forward next to the interior entry door. There are full walk around side decks with canvas/Eisinglass covers for the sundeck entry on each side. The steps to the cockpit are to starboard. There is a teak table and 2 deck chairs, folding serving table forward and an icemaker in the wetbar.

---

## 49' DeFever Cockpit

---

The 44 + 5 DeFever model offers a great cockpit with teak cap rails and non-skid decks. There is a transom door to the swimplatform and large, covered hatches for the master stateroom to enjoy natural ventilation and light.

---

## 49' DeFever Audio/Visual Equipment

---

- Pioneer AM/FM/CD/DVD/Ipod and Sirius ready player in the salon (2013) - Samsung 26" flat screen TV in the salon (2011)
- Samsung 22" flat screen TV in the master stateroom (2011) - Delphi Sirius XM radio receiver - KVH satellite TV system - Shakespeare Seawatch TV antenna - Kenwood AM/FM/CD/Ipod player on the flybridge (2014)
- Panasonic and Polyplaner interior speakers

---

## 49' DeFever Electronics

---

- Furuno 4 kW Radar
- Furuno Navnet vx2 multi-function displays at each helm (Software recently updated) (Flybridge monitor new in 2011)
- Furuno NavPilot autopilot at each helm
- Furuno RD-30 network system at each helm
- Argonaut ship's computer with TFlex G615-XLR 15" sunlight viewable monitor on the flybridge and Samsung Synchmaster BX2050 monitor at the lower helm (Includes Nobeltec VNS II electronic chart system) (2011) - Icom M-602 VHF at the lower helm - Icom Commandmic VHF on the flybridge - KVH Tracphone F33 sat phone system (Factory rebuild in 2012) - Sirius XM WxWorks antenna - Ritchie Powerdamp magnet compass at lower helm and on flybridge - Mingood intercom system
- Bullett wifi extender with antenna
- Proxicast LAN-cell router

---

## 49' DeFever Electrical System

---

- Westerbeke 12.5 kW generator with sound shield and approximately 1146 hours - Westerbeke 5kW generator with sound shield and approximately 2225 hours
- Prestolite 90 amp alternator
- Powermax 125 amp alternator with a Balmar regulator (2011)
- 12vdc/110vac/240vac electrical system - 3 X 8d lead acid batteries for each main engine (2013) and one for gensets (2014) - 8 X T105 Trojan lead acid deep-cycle house batteries (2016) - 2 X 50 amp shore power inlets - 50' 50 amp shore chord - Phase Three PT-70a 3-stage smart charger for 8D's - Magnum 2512 2500 watt inverter with charger for house batteries with remote panel (2013) - Guest galvanic isolator
- Guest and Blue Sea battery switches

---

## 49' DeFever Engine/Mechanical Equipment

---

- Large stand-up engine room - 2 X 135 hp Perkins Sabre 6-cylinder, in-line, naturally aspirated, fresh water cooled main engines. Starboard has remote mounted oil filters for easy access and service. Approximately 3431 hours on port and 3427 hours on starboard. - 2 X ZF 45-1 gearboxes (Port rebuilt and gear cooler replaced in 2016)
- Fuel manifold - Dual Racor 500FG main engine fuel filters with selector valve and vacuum gauges
- Racor 500FG fuel filter for each generator
- RCI Technologies fuel purifier system (2012) - Oil change system for mains and generator - Hynautic hydraulic throttle and engine transmission controls - Capilano hydraulic steering system
- Glendinning engine synchronizer system - Flowscan system - Naiad 174-1 stabilizer system with Multisea II controller (Serviced in 2016) - 2" stainless steel shafts with PYC dripless shaft seals - 26" X 18.5" propellers with Spurs line cutters - Sealand Vacuflush blackwater system with Tankwatch 4 level monitor
- Par-Max4 fresh water system pump (2013) - Raritan 12 gallon hot water heater with heat exchanger (2013) - MarineAir 3-zone a/c system with reverse cycle heat and digital thermostats controls - Central vacuum system
- Sea Recovery Aqua Whisper 600 gpd watermaker

## 49' DeFever Deck Equipment

---

- Muir dual vertical anchor windlass with three control stations and digital anchor rode length indicator and dual anchor roller - 75lb superMax20 anchor with 300' anchor chain - Fortress FX35 with 300' anchor chain - Aqua Jet sea water anchor chain wash down system
- Stainless steel dual anchor roller
- Stainless steel fender racks aft
- Stainless steel Sampson Post
- Stainless steel rails
- Stainless steel deck hardware
- Windscreen cover - Marquipt Seastair gangway - Hot/cold shower in cockpit - Fresh water wash down system forward and aft
- Deck storage box aft
- Lazarette access in the cockpit
- Fiberglass swimplatform
- Stainless steel swim ladder
- Side boarding gates on each side

## 49' DeFever Tender

---

- AB DLX 12' RIB (2011) (With bimini, GPS and VHF)
- Yamaha 40 hp 4-stroke outboard with approximately 150 hours
- UMT 1,000 lb davit (Rebuilt in 2015)

## 49' DeFever Fire & Safety Equipment

---

- ACR searchlight - Lifejackets - Dual electric horn - Fire extinguishers
- Marine Guard alarm system with under-deck sensors
- Rule bilge pumps
- Family Gard smoke detector

- Carbon monoxide detector

---

## 49' DeFever Exclusions

---

Owners' personal belongings and anything not listed in this specification that is onboard at time of inspection.

---

## 49' DeFever Disclaimer

---

The Company offers the details of this vessel in good faith but cannot guarantee or warrant the accuracy of this information nor warrant the condition of the vessel. A buyer should instruct his agents, or his surveyors, to investigate such details as the buyer desires validated. This vessel is offered subject to prior sale, price change, or withdrawal without notice.

---

## Exclusions

---

Owner's personal belongings.

---

## Disclaimer

---

The Company offers the details of this vessel or yacht in good faith but cannot guarantee or warrant the accuracy of this information nor warrant the condition of the vessel. A buyer should instruct his representatives, agents, or his surveyors, to investigate such details as the buyer desires validated. This vessel or yacht is offered subject to prior sale, price change, or withdrawal without notice.

# PHOTOS

**49' DeFever starboard forward profile  
photo2**



**49' DeFever port profile**



**49' DeFever anchor windlass**



**49' DeFever foredeck**



**49' DeFever foredeck aft**



**49' DeFever foredeck storage**



**49' DeFever port side deck photo1**



**49' DeFever port side deck photo2**





49' DeFever starboard side deck photo1



49' DeFever starboard side deck photo2



49' DeFever flybridge forward



49' DeFever flybridge aft



49' DeFever flybridge port



49' DeFever flybridge starboard



**49' DeFever flybridge helm**



**49' DeFever flybridge port aft**



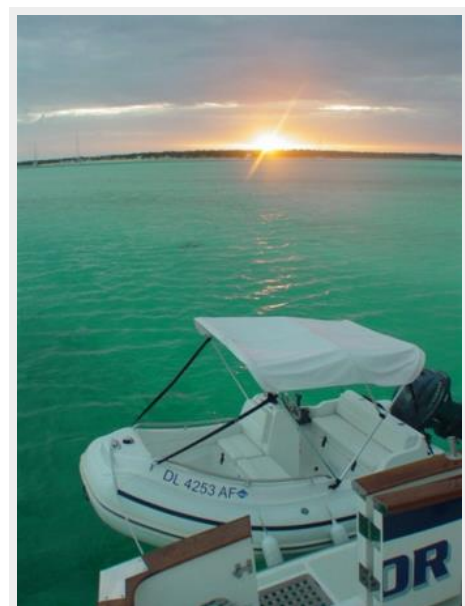
**49' DeFever flybridge port aft seating**



**49' DeFever flybridge starboard aft**



**49' DeFever tender photo1**



**49' DeFever flybridge starboard aft seating**





**49' DeFever tender photo2**



**49' DeFever tender photo3**



**49' DeFever tender covered**



**49' DeFever sundeck photo1**



**49' DeFever sundeck photo2**



**49' DeFever sundeck port**



**49' DeFever sundeck starboard**



**49' DeFever sundeck forward**



**49' DeFever cockpit**



**49' DeFever cockpit port**



**49' DeFever cockpit starboard**



**49' DeFever cockpit forward**





**49' DeFever swimplatform**



**49' DeFever salon forward**



**49' DeFever salon aft**



**49' DeFever salon port**



**49' DeFever salon starboard**



**49' DeFever salon starboard lounge chair  
photo1**



**49' DeFever salon starboard lounge chair  
photo2**



**49' DeFever salon starboard cabinetry**



**49' DeFever galley photo1**



**49' DeFever salon bar**





49' DeFever galley photo2



49' DeFever galley photo3



49' DeFever lower helm photo2



49' DeFever lower helm photo1



49' DeFever lower helm photo3



49' DeFever lower helm electronics



**49' DeFever master stateroom**



**49' DeFever master stateroom port**



**49' DeFever master stateroom starboard**



**49' DeFever master stateroom forward**



**49' DeFever master stateroom desk**



**49' DeFever master stateroom head**





**49' DeFever master stateroom shower**



**49' DeFever guest stateroom**



**49' DeFever guest stateroom lockers**



**49' DeFever guest stateroom head**



**49' DeFever guest stateroom shower**



**49' DeFever washer-dryer**



**49' DeFever engine room forward**



**49' DeFever engine room aft**



**49' DeFever port main engine**



**49' DeFever port Racor fuel filters**





**49' DeFever starboard main engine**



**49' DeFever starboard Racor fuel filters**



**49' DeFever fuel purifier system**



**49' DeFever fuel manifold**



**49' DeFever sea chest**



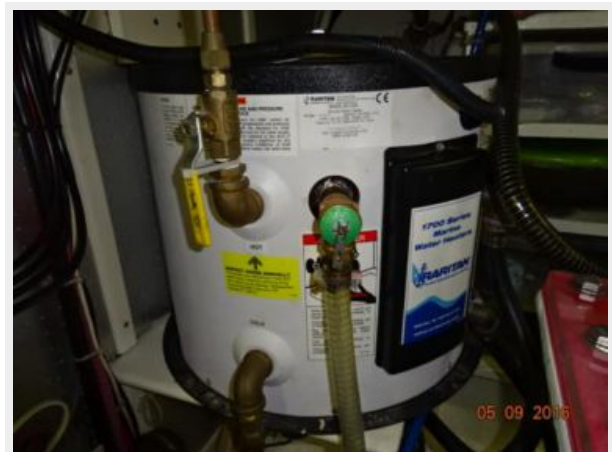
**49' DeFever stabilizer system**



**49' DeFever engine room work bench**



**49' DeFever water heater**



49' DeFever watermaker



49' DeFever electrical panel



49' DeFever 12.5 kW generator soundbox



49' DeFever 12.5 kW generator





**49' DeFever 12.5 kW generator Racor fuel filter**



**49' DeFever 5 kW generator soundbox**



**49' DeFever 5 kW generator Racor fuel filter**

**49' DeFever 5 kW generator**



49' DeFever inverter/charger



49' DeFever battery charger



49' DeFever hauled out



# CONTACTS

---

Andrey Shestakov, leading yacht broker of the sales department of Shestakov Yacht Sales Inc. Shestakov Yacht Sales Inc., the official representative of the Miami/Fort Lauderdale FL headquarters.

## Contact details

---

Email: **andrey@shestakovyachtsales.com**

Web: [shestakovyachtsales.com/en/](http://shestakovyachtsales.com/en/)

## Telephones

---

USA: **+1(954)274-4435**

## Office hours

---

Monday – Saturday: **9:00 - 21:00 EDT**

Sunday: **closed**

## Address

---



Harbour Towne Marina, 850 NE 3rd St,  
STE 213, Dania, FL 33004