

## MOTIVATOR — DEFEVER



**Судостроитель:** DEFEVER

**Год постройки:** 2005

**Модель:** Моторная яхта

**Цена:** **ЦЕНА ЯХТЫ ПО ЗАПРОСУ**

**Местонахождение:** United States

**Длина общая:** 49' 0" (14.94m)

**Ширина:** 15' 0" (4.57m)

**Макс. осадка:** 4' 7" (1.40m)

**Крейс. скорость:** 8 Kts. (9 MPH)

**Макс. скорость:** 10 Kts. (12 MPH)

Купить **Motivator — DEFEVER** а также выбрать подходящую вам яхту из нашего каталога яхт вам поможет опытный яхтенный брокер Андрей Шестаков. На сегодняшний день компания **Shestakov Yacht Sales Inc.** имеет большое количество яхт в собственном списке продаж, а также тесно сотрудничает со всеми крупными яхтенными производителями по всему миру.

Для того чтобы купить яхту **Motivator — DEFEVER** а также проконсультироваться по любому вопросу связанному с покупкой, продажей, чартером яхт позвоните по телефону **+7(918)465-66-44**.

# ОГЛАВЛЕНИЕ

---

|   |    |
|---|----|
| ОГЛАВЛЕНИЕ                              | 2  |
| ХАРАКТЕРИСТИКИ                          | 7  |
| Обзор                                   | 7  |
| Основная информация                     | 7  |
| Размеры                                 | 7  |
| Скорость, вместимость и масса           | 7  |
| Размещение                              | 8  |
| Корпус и палуба                         | 8  |
| Информация о двигателе                  | 8  |
| ПОДРОБНОЕ ОПИСАНИЕ                      | 9  |
| 49' DeFever Vessel Walkthrough          | 9  |
| 49' DeFever Accommodations              | 9  |
| 49' DeFever Salon                       | 9  |
| 49' DeFever Galley                      | 9  |
| 49' DeFever Dining                      | 10 |
| 49' DeFever Master Stateroom            | 10 |
| 49' DeFever Guest Stateroom             | 10 |
| 49' DeFever Laundry Room                | 10 |
| 49' DeFever Flybridge                   | 10 |
| 49' DeFever Sundeck                     | 10 |
| 49' DeFever Cockpit                     | 11 |
| 49' DeFever Audio/Visual Equipment      | 11 |
| 49' DeFever Electronics                 | 11 |
| 49' DeFever Electrical System           | 12 |
| 49' DeFever Engine/Mechanical Equipment | 12 |
| 49' DeFever Deck Equipment              | 13 |
| 49' DeFever Tender                      | 13 |
| 49' DeFever Fire & Safety Equipment     | 13 |

|  |           |
|--|-----------|
| 49' DeFever Exclusions                       | 14        |
| 49' DeFever Disclaimer                       | 14        |
| Исключения                                   | 14        |
| Отказ от ответственности                     | 14        |
| <b>ФОТОГРАФИИ</b>                            | <b>15</b> |
| 49' DeFever starboard forward profile photo2 | 15        |
| 49' DeFever port profile                     | 15        |
| 49' DeFever anchor windlass                  | 15        |
| 49' DeFever foredeck                         | 15        |
| 49' DeFever foredeck aft                     | 16        |
| 49' DeFever foredeck storage                 | 16        |
| 49' DeFever port side deck photo1            | 16        |
| 49' DeFever port side deck photo2            | 16        |
| 49' DeFever starboard side deck photo1       | 17        |
| 49' DeFever starboard side deck photo2       | 17        |
| 49' DeFever flybridge forward                | 17        |
| 49' DeFever flybridge aft                    | 17        |
| 49' DeFever flybridge port                   | 17        |
| 49' DeFever flybridge starboard              | 17        |
| 49' DeFever flybridge helm                   | 18        |
| 49' DeFever flybridge port aft               | 18        |
| 49' DeFever flybridge port aft seating       | 18        |
| 49' DeFever flybridge starboard aft          | 18        |
| 49' DeFever tender photo1                    | 18        |
| 49' DeFever flybridge starboard aft seating  | 18        |
| 49' DeFever tender photo2                    | 19        |
| 49' DeFever tender photo3                    | 19        |
| 49' DeFever tender covered                   | 19        |
| 49' DeFever sundeck photo1                   | 19        |

|   |    |
|---|----|
| 49' DeFever sundeck photo2                      | 19 |
| 49' DeFever sundeck port                        | 19 |
| 49' DeFever sundeck starboard                   | 20 |
| 49' DeFever sundeck forward                     | 20 |
| 49' DeFever cockpit                             | 20 |
| 49' DeFever cockpit port                        | 20 |
| 49' DeFever cockpit starboard                   | 20 |
| 49' DeFever cockpit forward                     | 20 |
| 49' DeFever swimplatform                        | 21 |
| 49' DeFever salon forward                       | 21 |
| 49' DeFever salon aft                           | 21 |
| 49' DeFever salon port                          | 21 |
| 49' DeFever salon starboard lounge chair photo1 | 21 |
| 49' DeFever salon starboard                     | 21 |
| 49' DeFever salon starboard lounge chair photo2 | 22 |
| 49' DeFever salon starboard cabinetry           | 22 |
| 49' DeFever galley photo1                       | 22 |
| 49' DeFever salon bar                           | 22 |
| 49' DeFever galley photo2                       | 23 |
| 49' DeFever galley photo3                       | 23 |
| 49' DeFever lower helm photo2                   | 23 |
| 49' DeFever lower helm photo1                   | 23 |
| 49' DeFever lower helm photo3                   | 23 |
| 49' DeFever lower helm electronics              | 23 |
| 49' DeFever master stateroom                    | 24 |
| 49' DeFever master stateroom port               | 24 |
| 49' DeFever master stateroom starboard          | 24 |
| 49' DeFever master stateroom forward            | 24 |
| 49' DeFever master stateroom desk               | 24 |

|   |    |
|---|----|
| 49' DeFever master stateroom head               | 24 |
| 49' DeFever master stateroom shower             | 25 |
| 49' DeFever guest stateroom                     | 25 |
| 49' DeFever guest stateroom head                | 25 |
| 49' DeFever guest stateroom lockers             | 25 |
| 49' DeFever guest stateroom shower              | 26 |
| 49' DeFever washer-dryer                        | 26 |
| 49' DeFever engine room forward                 | 26 |
| 49' DeFever engine room aft                     | 26 |
| 49' DeFever port main engine                    | 26 |
| 49' DeFever port Racor fuel filters             | 26 |
| 49' DeFever starboard main engine               | 27 |
| 49' DeFever starboard Racor fuel filters        | 27 |
| 49' DeFever fuel purifier system                | 27 |
| 49' DeFever fuel manifold                       | 27 |
| 49' DeFever sea chest                           | 28 |
| 49' DeFever stabilizer system                   | 28 |
| 49' DeFever engine room work bench              | 28 |
| 49' DeFever water heater                        | 28 |
| 49' DeFever electrical panel                    | 29 |
| 49' DeFever watermaker                          | 29 |
| 49' DeFever 12.5 kW generator soundbox          | 29 |
| 49' DeFever 12.5 kW generator                   | 29 |
| 49' DeFever 12.5 kW generator Racor fuel filter | 30 |
| 49' DeFever 5 kW generator soundbox             | 30 |
| 49' DeFever 5 kW generator Racor fuel filter    | 30 |
| 49' DeFever 5 kW generator                      | 30 |
| 49' DeFever inverter/charger                    | 31 |
| 49' DeFever battery charger                     | 31 |

---

|                        |    |
|------------------------|----|
| 49' DeFever hauled out | 31 |
| КОНТАКТЫ               | 32 |
| Контактная информация  | 32 |
| Телефоны               | 32 |
| Время работы           | 32 |
| Адрес                  | 32 |

# ХАРАКТЕРИСТИКИ

## Обзор

### Stabilized 2005 49' DeFever CPMY

Motivator is a 2005 49' DeFever CPMY (Also known as the 44 + 5 model) and she is turn-key. The DeFever 44 + 5 model combines the popular sundeck layout, aft full-beam master stateroom with a large flybridge and cockpit, so there are rarely many of these on the market at any particular time due to their popularity. Motivator stands out because of her condition and numerous upgrades, like her electronics, audio/visual equipment, watermaker, two generators, Naiad stabilizers and dual anchor arrangement. Her sellers have completed their multi-year Caribbean cruise and moved ashore, so Motivator is now available for sale. She is rigged for extended offshore cruising, but she is just as suited for cruising the Great Loop.

## Основная информация

|                                    |                             |
|------------------------------------|-----------------------------|
| <b>Тип судна:</b> Моторная яхта    | <b>Подкатегория:</b> Кубрик |
| <b>Модельный год:</b> 2005         | <b>Год постройки:</b> 2005  |
| <b>Страна:</b> United States       | <b>Верх:</b> Bimini Top     |
| <b>Открытая палуба мостика:</b> Да | <b>Кубрик:</b> Да           |

## Размеры

|                                     |   |
|-------------------------------------|---|
| <b>Длина общая:</b> 49' 0" (14.94m) | <b>Длина по ватерлинии:</b> 43' 6" (13.26m) |
| <b>Ширина:</b> 15' 0" (4.57m)       | <b>Макс. осадка:</b> 4' 7" (1.40m)          |

## Скорость, вместимость и масса

|  |  |
|--|--|
| <b>Крейс. скорость:</b> 8 Kts. (9 MPH)       | <b>Макс. скорость:</b> 10 Kts. (12 MPH)    |
| <b>Водоизмещение:</b> 54000 Pounds           | <b>Вместимость воды:</b> 370 Gallons       |
| <b>Вместимость сточного бака:</b> 40 Gallons | <b>Объем топливного бака:</b> 1100 Gallons |

## Размещение

---

**Всего кают:** 2

**Всего коек:** 3

**Спальные места:** 4

**Всего ком. состава:** 2

## Корпус и палуба

---

**Материал корпуса:** Fiberglass

**Материал палубы:** Composite Fiberglass

**Комплектация корпуса:** Modified Deep Vee

**Цвет корпуса:** White

**Отделка корпуса:** Stainless Steel

## Информация о двигателе

---

**Двигатели:** 2

**Производитель:** Perkins

**Модель:** Sabre M135

**Тип двигателя:** Inboard

**Тип топлива:** Diesel



---

# ПОДРОБНОЕ ОПИСАНИЕ

---

## 49' DeFever Vessel Walkthrough

---

Entering from the swimplatform through the starboard transom door into the cockpit, you step up into the Eisinglass enclosed sundeck. You can then step up to the flybridge, walk out either side deck or enter the salon door and down several steps to the salon with the galley to port. Walking forward, there is cabinetry starboard aft, a lounge chair and ottoman to starboard and the lower helm with side deck access door starboard forward. To port, forward of the galley, there is a port side deck access door and a sofa with two ottomans. The full beam master stateroom is aft and the guest stateroom is forward. This is the only 49' DeFever CPMY I have seen with an enclosed shower in the guest ensuite head. The engine room access is through a door in the starboard aft side of the guest stateroom.

## 49' DeFever Accommodations

---

The 44 + 5 DeFever offers a full beam master stateroom aft with ensuite head and a guest stateroom forward with ensuite head and over/under bunks. There are custom mattresses with memory foam on the guest berths. Each full head includes a separate shower and Corian countertops.

## 49' DeFever Salon

---

The spacious salon on the DeFever 44 + 5 offers a side deck access door port aft, another side deck access door at the lower helm starboard forward a sundeck access door aft. There is a sofa with two ottomans to port (Re-upholstered in 2013), a lounge chair and ottoman to starboard (Re-upholstered in 2013), portable helmseat/bar stool and storage cabinetry with a bar starboard aft. The large side and forward windows offer loads of natural light. There are also Phantom roll-away screens on the two side doors, custom draperies and Teak parque soles throughout.

## 49' DeFever Galley

---

- Seaward Princess 3347 electric stove with Ceran glass 3-burner cooktop - Broan trash compactor - Tundra T80 ac/dc 8 cu. ft. refrigerator/freezer - Tundra TF20 AC/DC 2.0 cu. ft. freezer
- Amana Radarrange microwave oven
- Cooks Toast R Oven - Double stainless steel sink - Corian countertops
- Dry storage

- Storage cabinets and drawers
- 2 opening windows
- Raritan icemaker on the sundeck (2013)

---

## 49' DeFever Dining

---

Dining space is available on the sundeck and the flybridge.

---

## 49' DeFever Master Stateroom

---

The full beam master stateroom is located aft and includes a centerline queen berth, 6 portlights, 2 transom hatches, curtains, ensuite head with enclosed shower, full-length mirror, desk/vanity, nightstands, reading lights, fans, teak & holly sole, walk-in closet, hanging locker and storage cabinets.

---

## 49' DeFever Guest Stateroom

---

The guest stateroom is located forward with over/under bunks, portlights, overhead deck hatch, hanging locker, fans, storage cabinets and drawers and an ensuite head. The head includes a separate shower and Corian countertop with molded-in sink.

---

## 49' DeFever Laundry Room

---

The Bosch WFL 2060 washer and WTA 3510 240vac dryer are located in the walk in closet in the master stateroom.

---

## 49' DeFever Flybridge

---

The huge flybridge on this 44 + 5 model includes two Tracy helm seats, forward and side benchseats with storage underneath, bimini and Eisinglass enclosure and full electronics at the helm which also has storage underneath. There is a non-skid deck, hi/lo table and the arch is hinged.

---

## 49' DeFever Sundeck

---

Motivator offers the popular massive sundeck and this one is fully enclosed with canvas,

Eisinglass and screens. There are no teak decks and the non-skid is in very good condition. The steps to the flybridge are forward next to the interior entry door. There are full walk around side decks with canvas/Eisinglass covers for the sundeck entry on each side. The steps to the cockpit are to starboard. There is a teak table and 2 deck chairs, folding serving table forward and an icemaker in the wetbar.

---

## 49' DeFever Cockpit

---

The 44 + 5 DeFever model offers a great cockpit with teak cap rails and non-skid decks. There is a transom door to the swimplatform and large, covered hatches for the master stateroom to enjoy natural ventilation and light.

---

## 49' DeFever Audio/Visual Equipment

---

- Pioneer AM/FM/CD/DVD/Ipod and Sirius ready player in the salon (2013) - Samsung 26" flat screen TV in the salon (2011)
- Samsung 22" flat screen TV in the master stateroom (2011) - Delphi Sirius XM radio receiver - KVH satellite TV system - Shakespeare Seawatch TV antenna - Kenwood AM/FM/CD/Ipod player on the flybridge (2014)
- Panasonic and Polyplaner interior speakers

---

## 49' DeFever Electronics

---

- Furuno 4 kW Radar
- Furuno Navnet vx2 multi-function displays at each helm (Software recently updated) (Flybridge monitor new in 2011)
- Furuno NavPilot autopilot at each helm
- Furuno RD-30 network system at each helm
- Argonaut ship's computer with TFlex G615-XLR 15" sunlight viewable monitor on the flybridge and Samsung Synchmaster BX2050 monitor at the lower helm (Includes Nobeltec VNS II electronic chart system) (2011) - Icom M-602 VHF at the lower helm - Icom Commandmic VHF on the flybridge - KVH Tracphone F33 sat phone system (Factory rebuild in 2012) - Sirius XM WxWorks antenna - Ritchie Powerdamp magnetic compass at lower helm and on flybridge - Mingood intercom system
- Bullett wifi extender with antenna
- Proxicast LAN-cell router

---

## 49' DeFever Electrical System

---

- Westerbeke 12.5 kW generator with sound shield and approximately 1146 hours - Westerbeke 5kW generator with sound shield and approximately 2225 hours
- Prestolite 90 amp alternator
- Powermax 125 amp alternator with a Balmar regulator (2011)
- 12vdc/110vac/240vac electrical system - 3 X 8d lead acid batteries for each main engine (2013) and one for gensets (2014) - 8 X T105 Trojan lead acid deep-cycle house batteries (2016) - 2 X 50 amp shore power inlets - 50' 50 amp shore chord - Phase Three PT-70a 3-stage smart charger for 8D's - Magnum 2512 2500 watt inverter with charger for house batteries with remote panel (2013) - Guest galvanic isolator
- Guest and Blue Sea battery switches

---

## 49' DeFever Engine/Mechanical Equipment

---

- Large stand-up engine room - 2 X 135 hp Perkins Sabre 6-cylinder, in-line, naturally aspirated, fresh water cooled main engines. Starboard has remote mounted oil filters for easy access and service. Approximately 3431 hours on port and 3427 hours on starboard. - 2 X ZF 45-1 gearboxes (Port rebuilt and gear cooler replaced in 2016)
- Fuel manifold - Dual Racor 500FG main engine fuel filters with selector valve and vacuum gauges
- Racor 500FG fuel filter for each generator
- RCI Technologies fuel purifier system (2012) - Oil change system for mains and generator - Hynautic hydraulic throttle and engine transmission controls - Capilano hydraulic steering system - Glendinning engine synchronizer system - Flowscan system - Naiad 174-1 stabilizer system with Multisea II controller (Serviced in 2016) - 2" stainless steel shafts with PYC dripless shaft seals - 26" X 18.5" propellers with Spurs line cutters - Sealand Vacuflush blackwater system with Tankwatch 4 level monitor
- Par-Max4 fresh water system pump (2013) - Raritan 12 gallon hot water heater with heat exchanger (2013) - MarineAir 3-zone a/c system with reverse cycle heat and digital thermostats controls - Central vacuum system
- Sea Recovery Aqua Whisper 600 gpd watermaker

---

## 49' DeFever Deck Equipment

---

- Muir dual vertical anchor windlass with three control stations and digital anchor rode length indicator and dual anchor roller - 75lb superMax20 anchor with 300' anchor chain - Fortress FX35 with 300' anchor chain - Aqua Jet sea water anchor chain wash down system
- Stainless steel dual anchor roller
- Stainless steel fender racks aft
- Stainless steel Sampson Post
- Stainless steel rails
- Stainless steel deck hardware
- Windscreen cover - Marquipt Seastair gangway - Hot/cold shower in cockpit - Fresh water wash down system forward and aft
- Deck storage box aft
- Lazarette access in the cockpit
- Fiberglass swimplatform
- Stainless steel swim ladder
- Side boarding gates on each side

---

## 49' DeFever Tender

---

- AB DLX 12' RIB (2011) (With bimini, GPS and VHF)
- Yamaha 40 hp 4-stroke outboard with approximately 150 hours
- UMT 1,000 lb davit (Rebuilt in 2015)

---

## 49' DeFever Fire & Safety Equipment

---

- ACR searchlight - Lifejackets - Dual electric horn - Fire extinguishers
- Marine Guard alarm system with under-deck sensors
- Rule bilge pumps
- Family Gard smoke detector

- Carbon monoxide detector

---

## 49' DeFever Exclusions

---

Owners' personal belongings and anything not listed in this specification that is onboard at time of inspection.

---

## 49' DeFever Disclaimer

---

The Company offers the details of this vessel in good faith but cannot guarantee or warrant the accuracy of this information nor warrant the condition of the vessel. A buyer should instruct his agents, or his surveyors, to investigate such details as the buyer desires validated. This vessel is offered subject to prior sale, price change, or withdrawal without notice.

---

## Исключения

---

При продаже яхты исключаются личные вещи владельца.

---

## Отказ от ответственности

---

Компания предоставляет описание судна или яхты добросовестно, но не может гарантировать точность этой информации, а также не ручается за техническое состояние. Покупатель должен проинструктировать своих агентов или оценщиков исследовать представленную информацию более подробно, по собственному желанию. Продажа судна или яхты, изменение цены или снятие с продажи будет происходить без предварительного уведомления.

# ФОТОГРАФИИ

49' DeFever starboard forward profile photo2



49' DeFever port profile



49' DeFever anchor windlass



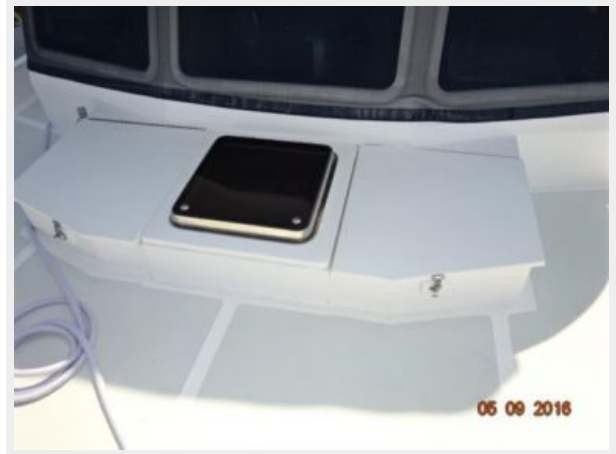
49' DeFever foredeck



49' DeFever foredeck aft



49' DeFever foredeck storage



49' DeFever port side deck photo1



49' DeFever port side deck photo2





49' DeFever starboard side deck photo1



49' DeFever starboard side deck photo2



49' DeFever flybridge forward



49' DeFever flybridge aft



49' DeFever flybridge port



49' DeFever flybridge starboard



**49' DeFever flybridge helm**



**49' DeFever flybridge port aft**



**49' DeFever flybridge port aft seating**



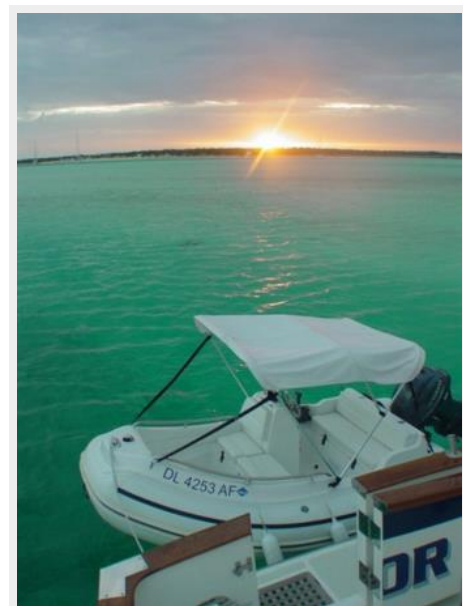
**49' DeFever flybridge starboard aft**



**49' DeFever flybridge starboard aft seating**



**49' DeFever tender photo1**



49' DeFever tender photo2



49' DeFever tender photo3



49' DeFever tender covered



49' DeFever sundeck photo1



49' DeFever sundeck photo2



49' DeFever sundeck port



49' DeFever sundeck starboard



49' DeFever sundeck forward



49' DeFever cockpit



49' DeFever cockpit port



49' DeFever cockpit starboard



49' DeFever cockpit forward



49' DeFever swimplatform



49' DeFever salon forward



49' DeFever salon aft



49' DeFever salon port



49' DeFever salon starboard



49' DeFever salon starboard lounge chair photo1



49' DeFever salon starboard lounge chair  
photo2



49' DeFever salon starboard cabinetry



49' DeFever salon bar



49' DeFever galley photo1



49' DeFever galley photo2



49' DeFever galley photo3



49' DeFever lower helm photo2



49' DeFever lower helm photo1



49' DeFever lower helm photo3



49' DeFever lower helm electronics



**49' DeFever master stateroom**



**49' DeFever master stateroom port**



**49' DeFever master stateroom starboard**



**49' DeFever master stateroom forward**



**49' DeFever master stateroom desk**



**49' DeFever master stateroom head**





### 49' DeFever master stateroom shower



### 49' DeFever guest stateroom



### 49' DeFever guest stateroom lockers



### 49' DeFever guest stateroom head



49' DeFever guest stateroom shower



49' DeFever washer-dryer



49' DeFever engine room forward



49' DeFever engine room aft



49' DeFever port main engine



49' DeFever port Racor fuel filters



49' DeFever starboard main engine



49' DeFever starboard Racor fuel filters



49' DeFever fuel purifier system



49' DeFever fuel manifold



49' DeFever sea chest



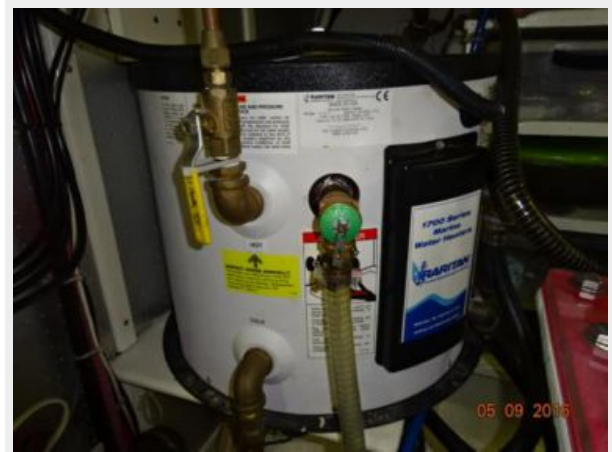
49' DeFever stabilizer system



49' DeFever engine room work bench



49' DeFever water heater



49' DeFever watermaker



49' DeFever electrical panel



49' DeFever 12.5 kW generator soundbox



49' DeFever 12.5 kW generator



**49' DeFever 12.5 kW generator Racor fuel filter**



**49' DeFever 5 kW generator soundbox**



**49' DeFever 5 kW generator Racor fuel filter**

**49' DeFever 5 kW generator**



49' DeFever inverter/charger



49' DeFever battery charger



49' DeFever hauled out



# КОНТАКТЫ

---

Андрей Шестаков (Andrey Shestakov) – ведущий яхтенный брокер отдела продаж яхт и судов компании Shestakov Yacht Sales Inc. Официальный представитель Shestakov Yacht Sales Inc. для русскоговорящих клиентов в центральном офисе компании в Майами/Форт Лодердейл/Флорида/США.

## Контактная информация

---

Email: [andrey@shestakovyachtsales.com](mailto:andrey@shestakovyachtsales.com)

Web: [shestakovyachtsales.com](http://shestakovyachtsales.com)

## Телефоны

---

Краснодарский край: **+7(918)465-66-44**

США, Майами, Флорида: **+1(954)274-4435**

## Время работы

---

Понедельник – Суббота: **9:00 - 21:00**  
EDT

Воскресенье: **Закрито**

## Адрес

---



Harbour Towne Marina, 850 NE 3rd St,  
STE 213, Dania, FL 33004