

NO NAME 2006 MERIDIAN 58 — MERIDIAN



Builder: MERIDIAN

Year Built: 2005

Model: Motor Yacht

Price: PRICE ON APPLICATION

Location: United States

LOA: 58' 0" (17.68m)

Beam: 17' 4" (5.28m)

Max Draft: 4' 11" (1.50m)

Cruise Speed: 18 Kts. (21 MPH)

Max Speed: 24 Kts. (28 MPH)

Our experienced yacht broker, Andrey Shestakov, will help you choose and buy a yacht that best suits your needs **NO NAME 2006 MERIDIAN 58 — MERIDIAN** from our catalogue. Presently, at Shestakov Yacht Sales Inc., we have a wide variety of yachts available on our sale's list. We also work in close contact with all the big yacht manufacturers from all over the world.

If you would like to buy a yacht **NO NAME 2006 MERIDIAN 58 — MERIDIAN** or would like help answering any questions concerning purchasing, selling or chartering a yacht, please call **+1(954)274-4435**

TABLE OF CONTENTS

TABLE OF CONTENTS	2
SPECIFICATIONS	3
Overview	3
Basic Information	3
Dimensions	3
Speed, Capacities and Weight	3
Accommodations	4
Hull and Deck Information	4
Engine Information	4
DETAILED INFORMATION	5
Manufacturer Provided Description	5
Electronics	5
Engine Notes	5
Exclusions	5
Disclaimer	5
PHOTOS	6
Manufacturer Provided Image	15
CONTACTS	19
Contact details	19
Telephones	19
Office hours	19
Address	19

SPECIFICATIONS

Overview

Clean late model trades may be accommodated! This flagship of the Meridian Fleet, the 580 Pilothouse Motoryacht is a Northwest legend. With her Cummins QSM 11, 635 hp engines, underwater exhaust, full beam master stateroom and pilothouse with fabulous visibility, this vessel is a perfect fit for extended cruising.

She features a three-stateroom, two head layout, with plenty of storage along with a stand-up engine room and a fine example of a well equipped and maintained 580 Meridian.

Please contact the listing broker for more detailed information or to schedule a showing. New photos will be posted shortly!

Basic Information

Category: Motor Yacht

Sub Category: Pilothouse

Model Year: 2006

Year Built: 2005

Country: United States

Fly Bridge: Yes

Dimensions

LOA: 58' 0" (17.68m)

Beam: 17' 4" (5.28m)

Max Draft: 4' 11" (1.50m)

Clearance: 19' 7" (5.97m)

Speed, Capacities and Weight

Cruise Speed: 18 Kts. (21 MPH)

Max Speed: 24 Kts. (28 MPH)

Displacement: 59920 Pounds

Water Capacity: 218 Gallons

Holding Tank: 74 Gallons

Fuel Capacity: 800 Gallons

Accommodations

Total Cabins: 3

Total Heads: 2

Hull and Deck Information

Hull Material: Fiberglass

Engine Information

Engines: 2

Manufacturer: Cummins

Model: QSM 11M

Engine Type: Inboard

Fuel Type: Diesel

DETAILED INFORMATION

Manufacturer Provided Description

The Meridian 580 Pilothouse has the strong performance you need and the stability you'll appreciate on long cruises. And, with her wide beam and superior design, this magnificent yacht boasts incredible living spaces: a full-beam master stateroom with new VIP entertainment system and a large forward stateroom, each with queen-size innerspring pillow-top mattresses and private head facilities; a mid-stateroom with comfortable double bunks; generous storage; and an elegant galley with Karadon solid-surface counter-tops, stainless-steel appliances and teak-and-holly flooring. Complementing a first-class pilothouse is an expansive salon with premium gloss cherry woodwork, plush cut-pile carpeting, fully appointed entertainment center and luxurious seating. In addition, the 580 features underwater exhaust, stand-up access to the engine room, Northstar electronics and, with safety in mind, broad side decks, molded-in steps to the bridge from the cockpit, and raised toe rails and gunwales. Prepare to cast off the dock lines...the horizon awaits.

Electronics

Onan 17 kW generator with 530 hours (2) Northstar GPS's at lower helm with repeater at flybridge helm Northstar auto pilot with repeater Northstar VHF KVH Sat TV 3000 Watt inverter

Engine Notes

Complete (\$10,000 +) engine(s) and generator service, including but not limited to, oils, fluids, filters, pump impellers, zincs, etc., done in May 2016.

Exclusions

Owner's personal belongings.

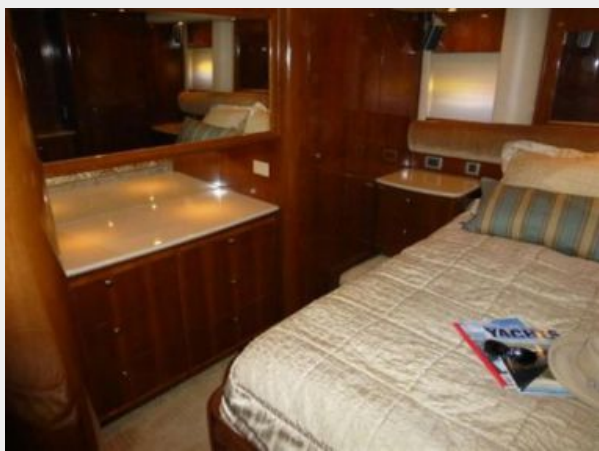
Disclaimer

The Company offers the details of this vessel or yacht in good faith but cannot guarantee or warrant the accuracy of this information nor warrant the condition of the vessel. A buyer should instruct his representatives, agents, or his surveyors, to investigate such details as the buyer desires validated. This vessel or yacht is offered subject to prior sale, price change, or withdrawal without notice.

PHOTOS

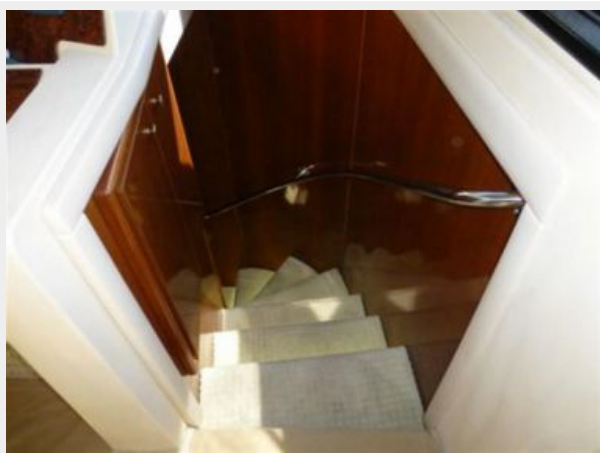




















Manufacturer Provided Image









CONTACTS

Andrey Shestakov, leading yacht broker of the sales department of Shestakov Yacht Sales Inc. Shestakov Yacht Sales Inc., the official representative of the Miami/Fort Lauderdale FL headquarters.

Contact details

Email: andrey@shestakovyachtsales.com

Web: shestakovyachtsales.com/en/

Telephones

USA: +1(954)274-4435

Office hours

Monday – Saturday: **9:00 - 21:00** EDT

Sunday: **closed**

Address



Harbour Towne Marina, 850 NE 3rd St,
STE 213, Dania, FL 33004