

GRAND BAROSSA — AZIMUT



Судостроитель: [AZIMUT](#)

Год постройки: 1999

Модель: Моторная яхта

Цена: ЦЕНА ЯХТЫ ПО ЗАПРОСУ

Местонахождение: United States

Длина общая: 100' 0" (30.48m)

Ширина: 21' 9" (6.63m)

Макс. осадка: 6' 4" (1.93m)

Крейс. скорость: 16 Kts. (18 MPH)

Макс. скорость: 23 Kts. (26 MPH)

Купить **GRAND BAROSSA — AZIMUT** а также выбрать подходящую вам яхту из нашего каталога яхт вам поможет опытный яхтенный брокер Андрей Шестаков. На сегодняшний день компания **Shestakov Yacht Sales Inc.** имеет большое количество яхт в собственном списке продаж, а также тесно сотрудничает со всеми крупными яхтенными производителями по всему миру.

Для того чтобы купить яхту **GRAND BAROSSA — AZIMUT** а также проконсультироваться по любому вопросу связанному с покупкой, продажей, чартером яхт позвоните по телефону **+7(918)465-66-44**.

ОГЛАВЛЕНИЕ

ОГЛАВЛЕНИЕ	2
ХАРАКТЕРИСТИКИ	4
Обзор	4
Основная информация	4
Размеры	4
Скорость, вместимость и масса	5
Размещение	5
Корпус и палуба	5
Информация о двигателе	5
ПОДРОБНОЕ ОПИСАНИЕ	6
Accommodations	6
Salon	6
Galley/Laundry	7
Day Head	7
Master Stateroom (Lower Deck)	7
Twin Guest Staterooms 1 & 2	7
VIP Stateroom	8
2nd Master Stateroom	8
Flybridge	8
Garage & Toys	9
Electronics	9
Engine Room/Mechanical Equipment	10
Pilothouse	10
Aft Deck	10
Forward Deck	11
Upgrades	11
Исключения	12
Отказ от ответственности	12

ФОТОГРАФИИ	13
Aft Deck	13
Main Salon	13
Pilothouse	13
Master Stateroom	13
Master Head	14
2nd Master Stateroom	14
Head	14
VIP Stateroom	14
Twin Stateroom 1 & 2	14
VIP Head	14
Flybridge	15
Lazarette	15
Engine Room	15
Toys	15
Running Shot	15
КОНТАКТЫ	16
Контактная информация	16
Телефоны	16
Время работы	16
Адрес	16

ХАРАКТЕРИСТИКИ

Обзор

GRAND BAROSSA VIP Azimut 100 is one of the only two 5 VIP stateroom yachts ever built. She is the most stunning Azimut Jumbo delivered to America. GRAND BAROSSA has been refurbished with new luxurious furnishings and each cabin is tastefully decorated with all the comforts and amenities to make your stay truly relaxing and enjoyable. One of the most notable features are her 3 VIP cabins. One being on the Main Deck (2nd Master Stateroom) with wheel chair and full handicapped access. 2 Queens and a Twin down below. The yacht features full walk around decks and a very spacious, relaxing "toy free" sun deck. GRAND BAROSSA is truly the best value under the sun for 10 guests. She was built with full American compatibility in mind. An American Captain spent a year in Viareggio, Italy following the build. She has an Atlas shore converter, American A/C, American Water maker etc. This is a big advantage as spare parts are easy to find anywhere. GRAND BAROSSA is pure classical elegance and sophistication but with a relaxed formality. The hand rubbed cherry wood throughout the yacht is immaculate. The bathrooms and internals look like new showing the very low usage of the yacht. Lalique door handles and fittings throughout. GRAND BAROSSA from 2001-2013 had only 150 hour usage but had an open checkbook maintenance scheduled program. The main engines have only 2650hrs. She was meticulously maintained full time by the same Captain for over 12 years. Mechanically the yacht has had a rigorous maintenance schedule on A/C filters, water filters, sea strainers cleaning, pumps, hydraulics

Основная информация

Тип судна: Моторная яхта

Модельный год: 1999

Год постройки: 1999

Год обновления: 2014

Страна: United States

Размеры

Длина общая: 100' 0" (30.48m)

Длина по ватерлинии: 87' 7" (26.70m)

Ширина: 21' 9" (6.63m)

Макс. осадка: 6' 4" (1.93m)

Скорость, вместимость и масса

Крейс. скорость: 16 Kts. (18 MPH)

Крейсерская скорость поворота: 1200 Kts.

Макс. скорость: 23 Kts. (26 MPH)

Макс. скорость поворота: 2250 Kts.

Водоизмещение: 200000 Pounds

Вместимость воды: 595 Gallons

Вместимость сточного бака: 340 Gallons **Объем топливного бака:** 3646 Gallons

Размещение

Всего кают: 5

Спальные места: 10

Всего ком. состава: 6

Каюты экипажа: 2

Койки экипажа: 4

Корпус и палуба

Материал корпуса: Fiberglass

Материал палубы: Teak

Информация о двигателе

Двигатели: 2

Производитель: MTU

Модель: 16V 2000 M90

Тип двигателя: Inboard

Тип топлива: Diesel

ПОДРОБНОЕ ОПИСАНИЕ

Accommodations

GRAND BAROSSA VIP Azimut 100 is one of the only two 5 VIP stateroom yachts ever built. She is the the most stunning Azimut Jumbo delivered to America. GRAND BAROSSA has been refurbished with new luxurious furnishings and each cabin is tastefully decorated with all the comforts and amenities to make your stay truly relaxing and enjoyable. One of the most notable features are her 3 VIP cabins. One being on the Main Deck (2nd Master Stateroom) with wheel chair and full handicapped access. 2 Queens and a Twin down below. The yacht features full walk around decks and a very spacious, relaxing "toy free" sun deck. GRAND BAROSSA is truly the best value under the sun for 10 guests. She was built with full American compatibility in mind. An American Captain spent a year in Viareggio, Italy following the build. She has an Atlas shore converter, American A/C, American Water maker etc. This is a big advantage as spare parts are easy to find anywhere. GRAND BAROSSA is pure classical elegance and sophistication but with a relaxed formality. The hand rubbed cherry wood throughout the yacht is immaculate. The bathrooms and internals look like new, showing the very low usage of the yacht. Lalique door handles and fittings throughout. GRAND BAROSSA from 2001-2013 had only 150 hour usage but had an open checkbook maintenance scheduled program. The main engines have only 2650hrs. She was meticulously maintained full time by the same Captain for over 12 years. Mechanically the yacht has had a rigorous maintenance schedule on A/C filters, water filters, sea strainers cleaning, pumps, hydraulics

Salon

The salon is truly the showcase of this stunning vessel. The comfort of Italian leather couches and soft fabrics give you the option to be formal or relaxed as you desire. There is a 8 seat table of the finest wood with an additional insert to extend for 10 guests. Two beautiful cabinets provide a discrete separation into the main salon area. There are two sofas for each side comfortably for seating 10 people. There are two extra leather bucket seats, which are the most comfortable on the yacht. A full service bar is located aft on the port side, complete with brand new refrigerator, ice maker and abundant storage. The bar counter top has been lowered so the people sitting in the main salon have an uncluttered clear view out of the yacht to the aft deck table. The bar and TV cabinets create an atmosphere that the main salon is a discrete room. The entertainment system features satellite new flat TV/CD/Blu Ray all with Bose surround sound. Access to the aft deck is via the full width curved glass doors.

- (2) Sofas for seating up to 10 (port & starboard)
- (2) Extra leather bucket seats, the most comfortable on the yacht
- Bar w/ refrigerator & ice maker and storage
- Satellite new flat screen TV/CD/BluRay, all w/ Bose surround sound

Galley/Laundry

The galley is located on the main deck to port, forward of the dining area. Many custom features are provided to add serving and preparation space, including pull out counters and recessed storage areas. All refrigeration was replaced with US parts and custom counter space and storage was added.

- Four burner stove & oven
- Convection oven/microwave
- Dishwasher
- Double sink
- Marble counter tops
- Double reach in refrigerators & freezers

The vessels laundry facility is located in the crew quarters and features a stack-able Maytag washer/dryer.

Day Head

Located in the port side forward of the main salon, this beautiful day head has gorgeous marble tops and floor, centralized air extracting system, sealand wc system, cabinet, mirror, and unique Lalique fittings.

Master Stateroom (Lower Deck)

The Master is located on the lower accommodation deck aft. It has a king bed with built in nightstands, reading lights and a large walk-in closet aft on the port side with custom chest of drawers and linen shelves. The vanity is to starboard with custom cabinets and drawer space. A settee is located port with custom cabinets and bookshelves. Entertainment system includes new 28" flat TV/BLU RAY, iPod station and full sound system on July 2014. Large and roomy with tasteful deep cherry wood furnishings. Large dressing room for his and hers on wood panels are exquisite. The en suite bath has an oversized shower, his and her marble sinks, and custom cabinets.

Twin Guest Staterooms 1 & 2

These two identical guest staterooms located mid ship on the accommodation deck. Each features twin berths, hanging lockers, custom cabinets and en suite baths. Both staterooms convert to double berths if desired. These staterooms features new 22" flat TV/BLU RAY, iPod station and full sound system on July 2014. Essentially this is a five stateroom yacht with double bed configuration something usually only found on yachts 130ft and above. Storage under the beds is standard throughout. The finishing of the storage components under the mattresses is the

same high quality found throughout the yacht. A feature hardly encountered on the most exclusive super yachts in the world.

VIP Stateroom

The VIP stateroom is located forward on the accommodation deck and features a queen bed, built in nightstands, reading lights, and custom cabinets. A vanity is located to starboard along with a large closet. Bookshelves and the entertainment system are to port. Entertainment system includes new 28" flat TV/BLU RAY, iPod station and full sound system on July 2014. The en suite bath includes shower, custom cabinets, and marble sink.

2nd Master Stateroom

The second Master Stateroom is located on the main deck forward. This cabin has a very special feature, being that all doors are big enough for wheelchair access including the en suite bath that has a large shower with seating and custom cabinets. All done with the most tasteful quality. A California King bed with built in nightstands and reading lights are provided. A vanity is located on the starboard side with drawers and storage lockers. Hanging lockers are found on the port and starboard sides. A settee is located on the port side. Entertainment system features TV/DVD and full sound system, iPod dock.

Flybridge

The wide Flybridge is accessible through the internal staircase in the wheelhouse and the external staircase in the aft cockpit. Open with bimini top and is divided into two sections: U-shaped dining for 10 Aft and casual seating for cocktails forward. Full wet bar with sink, brand new refrigerator, 2 new ice makers and BBQ. Forward and to starboard there is a cocktail table with L-shaped seating. Walking aft, there is a wet bar with refrigerator, ice machine, and electric grill. Additional refrigeration and freezer units are strategically placed on port and starboard respectively. The Flybridge Deck on GRAND BAROSSA provides ample space to bask in the sun on padded sun areas Aft and 4 chairs with teak flooring surface. The fly bridge is fitted with full instrumentation at the helm station. The helm station is protected by canvas covers and fitted with a Bimini top. Access to the pilothouse is via the sliding glass hatch to starboard. The perimeter is protected by stainless railing, making this a child friendly area. Access to the lower aft deck is via the companionway on the port side. Continuing aft, a Bimini top covers the Hi-lo table and C-shaped seating for ten. A padded sun area is aft and four steamer chairs with cocktail tables allow for entertaining at its finest. Pilot console includes: Main engine controls main engines and reversing gear gauges Instruments for navigation Trim tab control/ indicator Rudder angle indicator Forward anchor winch control Electric search light, horn and navigation light controls Fire extinguisher pump control Maneuvering intercom connecting wheelhouse, main deck and engine room Helm seats (port side) Two seats (starboard side) New mountable

flat screen TV since August 2014, Two new ice makers August 2014

Garage & Toys

- (1) 14' Nautica tender w/ 125 HP outboard - motor overhauled April 2015
- (1) paddle board - December 2013 like new only used 4 times
- Brownies diving compressor + 4 air tanks - Re-certified December 2013
- (1) two man canoe - December 2013
- (1) 3 man doughnut - December 2013
- New life vests
- (6) diving/snorkeling sets
- (1) wake board and (2) skies
- Assorted fishing equipment
- "Aussie" Beach Club

Electronics

- Raytheon 72 mile radar
- Raytheon 48 mile radar
- Furuno GPS navigator
- New Garmin Navigation System 5212 w/ depth sounder & all charts for Bahamas & greater Caribbean
- Raytheon Ray Chart
- Robertson AP 20 Autopilot
- Raytheon RL 70
- Simrad VHF Radio
- Simrad R135 Mk 2 rudder angle indicator
- Autohelm Master View speed and depth log
- Sony Vaio computer with Maptech charting software
- Koopnautic/Vosper stabilizer Roll Control System
- Robertson AP 20 autopilot remote
- Icom IC 725 SSB radio
- (2) Standard Horizon VHF
- Flybridge electronics are the same
- New Inteleron navigation system October 2014
- 4 Station cctv camera system in pilot house
- Wifi
- Satellite phone
- Satellite TV
- Cell phone

Engine Room/Mechanical Equipment

- Twin MTU 16V 2000 TE 90 1800hp
- ZF BW 255 VP V-Drive Gearbox
- AISI 316 steel rudders
- (1) Kohler Generator 60kw 7893hrs (1) Kohler Generator 32kw 4630hrs
- Bow thruster fully rebuilt in December 2014
- (1) 125A, three-phase, 380V/220V shore power inlet with Atlas Converter
- Dometic WC system (new pumps December 2014)
- Cruisair A/C 150.000BTU
- (4) Electro-hydraulic units in the aft peak for rudders, gangway, trim tabs, transom launching/recovering systems for tender and jet skis. Each of these 24V with own oil tank and own circuit
- (1) fresh water tank of 595gls
- (1) Grey water tank of 340gls
- (1) Black water tank of 340gls

Pilothouse

- Access through staircase from lobby
- Two seats against aft bulkhead
- Area for paper charts and chart drawer
- Cabinets
- Staircase to access Flybridge
- New main engine controls with synchronizer
- Main engines and reversing gear gauges
- Instruments for navigation
- Electrical panel
- Rudder angle indicator
- Trim tabs control
- Compass
- Wipers, horn, navigation lights, anchor, winches, search light controls
- Fire extinguisher electro-pump control
- Maneuvering intercom connecting flybridge, main deck and engine room
- Fuel electric pump, grey and black water electric pump, bilge electric pump controls
- High bilge water level alarm
- Fuel level gauge
- Fresh water gauge
- Dimmer for console lights
- Teak flooring

Aft Deck

Stainless steel double doors open to combine the salon with the aft deck, this space features Alfresco dining for eight to ten guests and boasts a 48" flatscreen. To port is access to the flybridge deck and aft, access to the swim platform/lazarette. The lazarette houses a tender and jet ski and also provides ample storage space for all your toys and accessories. The massive swim platform once open provides waters edge access for all your water sports fun! The stern includes: (2) Electrical wrapping winches 2000W 24 Wider staircase in fiberglass w/ teak steps from aft cockpit to flybridge Electro-hydraulic retractable gangway in stainless steel and teak Transom w/ electro-hydraulic opening convertible into a wide swim platform Teak on swim platform when transom door is open Hatch to access to garage on the floor of the aft deck Water shore connection on the transom Hand shower on transom (starboard side) Shore power inlet in the bulwark

Forward Deck

Comfortable, casual pad seating for 2-4 plus two sunbeds that recline.

- (2) 3500W 24v reversible winches
- Anchor winches control
- (2) 210lb anchors with 13mm chain and 325' length
- Chain storage with drain and washing chain pump
- Built-in stainless steel bow protection
- Glass and stainless steel hatch to access crew quarters with S.S handrails
- Two side peaks on superstructure
- (3) Electric windshield wipers
- Fresh water hose connection for wash downs

Upgrades

- New chiller, domestic - March 2014
- New bottom paint job - December 2014
- New transom extension to provide extra lift
- Bow thruster fully rebuilt - December 2014
- All zinc replaced - December 2014
- Prospeed on shafts - December 2014
- All toilet pumps replaced - December 2014
- New membranes for watermakers - December 2014
- New anchor windlass motor - December 2014
- Sea cooler serviced & cleaned - December 2014
- Teak decks sanded & teak wondered - December 2014
- All canvas new - 2013
- New black water pumps - 2013

- Yacht paint job w/ Awl grip - 2011
- Yacht waxed & polished every 6 months
- New life rafts (only need to be serviced every 3 years) - December 2014
- All fire fighting system & safety equipment serviced - December 2014
- New Epirbs - December 2014
- New TV mount & TV for flybridge - August 2014
- (3) New ice makers - December 2014
- New carpet throughout - 2012
- All new flat TV's throughout except 2nd Master Stateroom
- All rooms w/ new Blu-Ray players, iPod stations - July 2014
- All Wifi compatible
- New marble floors in the bar

Исключения

При продаже яхты исключаются личные вещи владельца.

Отказ от ответственности

Компания предоставляет описание судна или яхты добросовестно, но не может гарантировать точность этой информации, а также не ручается за техническое состояние. Покупатель должен проинструктировать своих агентов или оценщиков исследовать представленную информацию более подробно, по собственному желанию. Продажа судна или яхты, изменение цены или снятие с продажи будет происходить без предварительного уведомления.

ФОТОГРАФИИ

Aft Deck



Main Salon



Pilothouse



Master Stateroom



Master Head



2nd Master Stateroom



Head



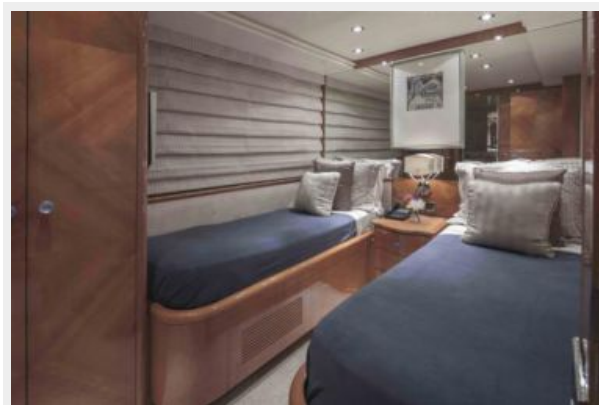
VIP Stateroom



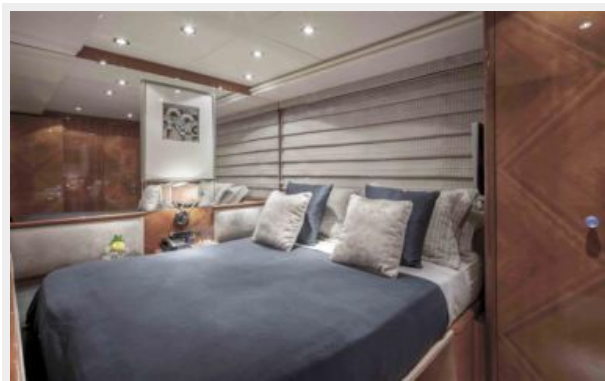
VIP Head



Twin Stateroom 1 & 2



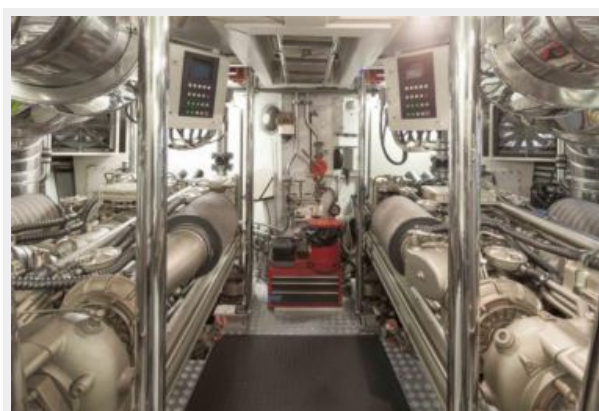
Flybridge



Lazarette



Engine Room



Toys



Running Shot



КОНТАКТЫ

Андрей Шестаков (Andrey Shestakov) – ведущий яхтенный брокер отдела продаж яхт и судов компании Shestakov Yacht Sales Inc. Официальный представитель Shestakov Yacht Sales Inc. для русскоговорящих клиентов в центральном офисе компании в Майами/Форт Лодердейл/Флорида/США.

Контактная информация

Email: andrey@shestakovyachtsales.com

Web: shestakovyachtsales.com

Телефоны

Краснодарский край: **+7(918)465-66-44**

США, Майами, Флорида: **+1(954)274-4435**

Время работы

Понедельник – Суббота: **9:00 - 21:00**
EDT

Воскресенье: **Закрито**

Адрес



Harbour Towne Marina, 850 NE 3rd St,
STE 213, Dania, FL 33004