

## TRANQUILIZER — HUNTER



**Судостроитель:** HUNTER

**Год постройки:** 1999

**Модель:** Sloop

**Цена:** **ЦЕНА ЯХТЫ ПО ЗАПРОСУ**

**Местонахождение:** United States

**Длина общая:** 41' 0" (12.50m)

**Ширина:** 13' 10" (4.22m)

**Макс. осадка:** 5' 0" (1.52m)

Купить **TRANQUILIZER — HUNTER** а также выбрать подходящую вам яхту из нашего каталога яхт вам поможет опытный яхтенный брокер Андрей Шестаков. На сегодняшний день компания **Shestakov Yacht Sales Inc.** имеет большое количество яхт в собственном списке продаж, а также тесно сотрудничает со всеми крупными яхтенными производителями по всему миру.

Для того чтобы купить яхту **TRANQUILIZER — HUNTER** а также проконсультироваться по любому вопросу связанному с покупкой, продажей, чартером яхт позвоните по телефону **+7(918)465-66-44**.

# ОГЛАВЛЕНИЕ

ОГЛАВЛЕНИЕ	2
ХАРАКТЕРИСТИКИ	5
Обзор	5
Основная информация	5
Размеры	5
Скорость, вместимость и масса	5
Размещение	6
Корпус и палуба	6
Информация о двигателе	6
ПОДРОБНОЕ ОПИСАНИЕ	7
Manufacturer Provided Description	7
Accommodations & Walkthrough	7
Current Owner Upgrades 2013-2016	8
Recent Maintenance (additional to normal maintenance)	9
Cockpit	10
Salon	10
Nav Station	10
Galley	10
Master Stateroom & Head	11
Guest Stateroom & ensuite Head	11
Sails & Rigging	12
Deck & Hull Equipment	12
Electronics & Navigation Equipment	13
Electrical Equipment	13
Исключения	14
Отказ от ответственности	14
ФОТОГРАФИИ	15
Salon - forward	15

Under Sail	15
At Anchor	15
At Anchor	15
Peaceful Sunset	15
Underway - power	15
Salon - aft	16
Salon Settee	16
Galley	16
Salon forward to port	16
Nav Station	16
Portside Settee	16
Aft Day Head	17
AC/DC Panel	17
Shower in Aft Head	17
Aft Berth	17
Aft Berth to portside	18
Aft Stateroom to starboard	18
Guest Stateroom looking aft to port	18
Guest Stateroom	18
Guest ensuite Head	19
Guest Berth	19
Deck	19
Cockpit aft	19
Cabin profile	20
Mast/Double Spreaders	20
Ground Tackle	20
Cabin profile	20
Deck profile	21
Solar Panel	21

Engine Instrument Panel	21
Dinghy/Hoist/Solar Panel	21
Steering Pedestal	22
Cockpit - forward	22
Deep Frezer and Refer	22
Yanmar 50HP Engine	22
Cockpit - aft	22
Transmission & Stuffing Box	22
Rudder and Running Gear	23
Stern profile	23
Starboard Aft Quarter	23
Floor Plan	23
Manufacturer provided image	23
Bottom Painted 5/16/16	23
Bottom Painted 5/16/16	24
<b>КОНТАКТЫ</b>	<b>25</b>
Контактная информация	25
Телефоны	25
Время работы	25
Адрес	25

# ХАРАКТЕРИСТИКИ

## Обзор

**TRANQUILIZER** is owned by a *VERY* experienced couple that has equipped her to cruise extensively. And upgraded her with the latest navigation and convenience equipment. In addition, they knew where the weak points of a **Hunter 410** were and addressed them. Specifically the rudder, through hulls and standing rigging. These are people who "get it" and spared no expense. You'll see the upgrade and maintenance spreadsheets in the Listing Brochure. This boat is ready to start on her next journey with a new Crew to appreciate her and experience the next chapter of adventures.

## Основная информация

Тип судна: Sloop

Подкатегория: Aft Cockpit

Модельный год: 1999

Год постройки: 1999

Страна: United States

Верх: Dodger

Кубрик: Да

## Размеры

Длина общая: 41' 0" (12.50m)

Длина по ватерлинии: 37' 10" (11.53m)

Ширина: 13' 10" (4.22m)

Макс. осадка: 5' 0" (1.52m)

## Скорость, вместимость и масса

Водоизмещение: 19500 Pounds

Вместимость воды: 145 Gallons

Объем топливного бака: 50 Gallons

## Размещение

---

Всего кают: 2

Всего коек: 7

Спальные места: 7

Всего ком. состава: 1

## Корпус и палуба

---

Материал корпуса: Fiberglass

## Информация о двигателе

---

Двигатели: 1

Производитель: Yanmar

Тип двигателя: Inboard

Тип топлива: Diesel

# ПОДРОБНОЕ ОПИСАНИЕ

## Manufacturer Provided Description

Hunter Marine's evolutionary innovation shows in the Hunter 410. Backed by over 25 years of experience, the 410 really delivers. The spacious salon includes everything to make cruising a comfortable experience. Plenty of hatches and ports keep the salon bright, airy and well-ventilated. The highly polished dining table is central to entertaining and serving meals. Elegant fabrics and rich teak combine to create a warm and luxurious atmosphere. A separate navigation station houses all electric controls as well as providing plentiful space for electronics. The aft head includes a stall shower, Corian vanity, and lots of storage. Dual access to the large head keeps it private yet convenient. Aft, there is a master stateroom that features a huge queen berth, hanging lockers, and a host of storage facilities right down to the hanging carry-on closet. Lighting and ventilation is excellent and there is full head room as well. Forward, the full size stateroom has its own en suite head, overhead hatches, and more drawers and hanging lockers than found on much larger yachts. The starboard side galley is very open with large, wide Corian counters, three-burner range with oven, microwave, triple access refrigerator-freezer, trash receptacle, and plenty of storage. Even the dishware and rack are included. Comfort, convenience, and utility were Hunter's design goals and the new 410 meets them head on. Hunter Marine's keel boats are the backbone of the Hunter fleet. These spacious and comfortable cruisers are incredibly appointed from the rich fabrics to the top-grade hardware. Hunter Marine Corporation was founded in 1973 to build truly affordable sailboats. Warren Luhrs, Hunter's chairman, has personally logged thousands of ocean miles both single-handedly and shorthanded aboard his ocean racers. From these floating laboratories hundreds of new ideas have been born. The same B & R rig that powered his boats into the record books also power the Hunter fleet. A lot has changed over the years, but Hunter Marine continues its commitment of bringing the sailing public the best performing and most accommodating sailboats at a reasonable price.

## Accommodations & Walkthrough

"TRANQUILIZER" is in very nice condition with lots of upgrades and a fantastic two-stateroom layout. The wonderful characteristic of this Hunter 410 is the spacious cockpit, equipped with a tables on both sides of the steering pedestal, and plenty of storage space. The transom stairs provide easy access to the water and the lockers alongside the stairs are conveniently located for the storage of water sports equipment. The stern rail seats provide additional seating to accommodate extra guests in the cockpit. The interior is finished with teak and holly cabin sole with solid teak trim. The upholstery is completed with overstuffed cushions for added comfort. The 6'6" headroom and the unique lay out offers a very spacious, airy, and bright atmosphere. Plenty of light is let in and cross ventilation created by the 7 Lewmar overhead opening hatches with screens and 9 Lewmar opening ports with screens and 11 fixed windows. The temperature is controlled by a 16,000 BTU "Marine Air" air conditioning system serving the SALON, GALLEY

and forward GUEST CABIN, as well as, an 8,000 BTU system serving the OWNER'S CABIN. Both of these systems are reverse cycle to produce heat. The forward GUEST CABIN includes a queen size berth, Pullman style, on the starboard side with a head and shower forward. There is also a hanging closet on the port side offering good storage space. Aft of the GUEST CABIN is the SALON, with a straight settee to port and a U-shaped settee around a dinette table to starboard. The L-shaped GALLEY is located aft of the dinette area, while the NAV STATION is aft of the straight settee to port. The OWNER'S CABIN is located aft of the companionway, and although located under the COCKPIT, it does have plenty of head room. It is equipped with a queen size bed aft and a full size head, with a separate shower, to port. The spacious hanging locker is to starboard next to the doorway. The head has a second door leading into the SALON and GALLEY area. The ENGINE area is very easily accessed on all sides by having the "cover box" lift up completely.

## Current Owner Upgrades 2013-2016

Year	Month	Description	Value (material and labor)
2013	11	New Rudder, with stainless steel shaft installed	\$6,000
2013	11	New through hulls below the waterline installed (all 11)	\$6,000
2013	11	New coupling flange installed	\$300
2013	11	New PSS dripless shaft seal installed (the whole set)	\$300
2013	11	New cutlass bearing installed	\$600
2013	11	New Power Sterling 60Amp battery charger incl. remote display installed	\$600
2013	11	New starter battery (1x group 27 sealed cell)	\$120
2014	3	New LED steaming and decklight installed	\$400
2014	3	New Achilles 9.6' Hypalon Dinghy	\$1,600
2014	3	New standing rigging	\$8,000
2014	3	New Mack Pack (sail bag) installed	\$1,000
2014	3	New Radar reflectors at the rig installed	\$300
2014	4	New 50Amp alternator installed	\$200
2014	4	New house batteries (4 x 6VDC 220 Amp/h deep cycle wet cells)	\$500
2014	9	New fwd and aft sump drain boxes installed	\$250
2014	9	New tank monitor system	\$250
2014	11	New anchor chain installed (275 feet, G40 5/16", galvanized)	\$1,200
2014	11	New Mantus anchor 65lb installed	\$500
2015	1	New Raymarine A127 MFD display installed	\$10,000
2015	1	New Raymarine SeaTalk NG Network installed	Incl. in the display



2015 1	New Raymarine EVO 200 Autopilot Course Computer	Incl. in the display
2015 1	New Raymarine P70 Autopilot Controller installed	Incl. in the display
2015 1	New Raymarine I70 displays installed (2x helm, 1x nav station)	Incl. in the display
2015 1	New Raymarine ITC5 installed	Incl. in the display
2015 1	Installation of the ITC5	Incl. in the display
2015 1	New speed and depth transducers installed	Incl. in the display
2015 1	New wind transducer installed	Incl. in the display
2015 5	New dodger and bimini installed	\$4,000
2015 11	New water heater installed (6 gal, with heat exchanger)	\$600
2015 11	New Groove 52 WiFi booster installed	\$400
2015 11	New digital TV- and Radio antenna incl. amplifier installed	\$200
2015 11	Divider wall in the Refrigerator / freezer replaced	
2016 3	New Martek Systems Dinghy Davit installed	\$4,000
2016 3	New solar panel installed - 285 watts	\$ 600
2016 3	New Blue Sky 3000i MPPT Solar Controller including remote panel installed	\$1,000
2016 3	New Raymarine Ray70 VHF radio with AIS (integrated in network) installed	\$700
2016 3	New Xantrex 600W pure sine inverter incl. remote control installed	\$500
2016 4	New Raritan Super Flush marine head (101) in fwd head installed	\$350
2016 4	SmartPlugs on the shore power inlets and cables installed	\$500
	Total	\$50,970

## Recent Maintenance (additional to normal maintenance)

Year	Month	Description
2014	3	Keel bolts retensioned, keel - hull joint resealed
2015	4	Fuel tank professionally cleaned
2015	5	Raw sea water Impeller changed-engine
2015	11	Water cooler on the engine flushed and filled with new coolant
2016	4	Aft waste tank flushed
2016	4	Alternator belt changed
2016	4	All winches maintained
2016	5	Engine oil changed
2016	5	Gear box oil changed

---

2016 5	Primary and secondary diesel filter changed
2016 5	Oil filter changed
2016 5	Sails inspected and serviced

## Cockpit

---

By moving the cockpit to the gunnels, the 410 can handle a full crew for sailing or entertaining. Extra storage and a custom console are also benefits of the wider cockpit. The flip down pilot seat and walk thru transom make boarding easy and safe. Taffrail seats and dual transom lockers complete the package. The integrated fiberglass steel arch keeps the cockpit clear with the traveler up top. Coaming wells keep the halyards and sheets organized.

The steering pedestal is well organized with all electronics visible. There is a swing up table forward of the pedestal for entertaining.

## Salon

---

The spacious salon includes everything to make cruising a comfortable experience. Plenty of hatches and ports keep the salon bright, airy and well ventilated. The highly polished dining table is central to entertaining and serving meals. Elegant fabrics and rich teak combine to create a warm and inviting atmosphere.

- U-shaped dinette (converts to double)
- Wine/spirits locker
- Open locker with fiddle
- Large storage locker
- Fiddled bookshelf
- Settee to port with two hullside lockers

## Nav Station

---

A dedicated Navigation Station houses all your electric controls as well as providing plentiful space for I70 display (depth, wind, speed, etc.), CD player, chart storage, and storage shelving above and along side.

## Galley

---

The Galley is located on starboard side, aft of Salon, forward of MSR.

- Adler Barbour 12v top & front loading refrigerator w/freezer, wooden Divider wall between refer/freezer replaced with starboard
- Double hi-polish s/s sink
- Teak trimmed Corian counter tops
- (4) drawers
- (2) Under counter lockers
- (4) Storage bins
- Hullside locker
- Shelf storage over sink for cups, plates and glasses
- Force 10 3-burner propane stove w/oven
- Sunbeam microwave
- In-counter trash receptacle
- Water heater
- Pressure/dockside water systems
- Teak towel rack
- (2) opening ports, opening hatch for galley comfort
- Book shelf at cabinet side

## Master Stateroom & Head

Aft you'll find the Master Stateroom that features a spacious Queen berth, hanging lockers, storage shelves, and a host of storage facilities right down to the hanging carry-on closet. Lighting and ventilation is excellent. Padded, angled headboard for in-bed reading/lounging.

- Dressing seat
- (1) 12v fans
- (6) Opening ports
- Generous storage
- Bedding package includes fitted sheet

The aft head includes a stall shower, Corian vanity and plenty of storage. This head has a Vacuflush system. dual access from the stateroom and salon keeps it private yet convenient.

## Guest Stateroom & ensuite Head

- Mack Pack boom sail bag (NEW 2014)
- Stainless wire standing rigging (NEW 2014)
- Profurl Jib roller furling
- UK Dacron sails: main, 115% genoa, 875 SF total sail area
- all lines lead aft through Spinlocks
- (6) Spinlock line clutches
- Aluminum keels stepped on deck
- Harken mainsheet traveler on arch
- (1) Lewmar 44 self tailing winches
- (2) Lewmar 48 self tailing winches
- (1) Lewmar OP2 power winch-Halyard

---

## Sails & Rigging

---

- Mack Pack boom sail bag (NEW 2014)
- Stainless wire standing rigging (NEW 2014)
- Profurl Jib roller furling
- UK Dacron sails: main, 115% genoa, 875 SF total sail area
- all lines lead aft through Spinlocks
- (6) Spinlock line clutches
- Aluminum keels stepped on deck
- Harken mainsheet traveler on arch
- (1) Lewmar 44 self tailing winches
- (2) Lewmar 48 self tailing winches
- (1) Lewmar OP2 power winch-Halyard

---

## Deck & Hull Equipment

---

- Mantus 65lb anchor with 275' G40 5/16" galvanized chain
- Dodger & Bimini with Eisenglass on Dodger
- Martek systems dinghy davit (NEW 2016)
- Cockpit cushions
- Fiberglass aft arch
- Walk thru transom to swim platform
- Cockpit table
- Pedestal drink holders
- Stern seats w/covers
- (9) Opening ports w/screens
- Full cockpit and transom lockers
- Achilles 9.6 Hypalon dinghy (NEW 2014)
- Yamaha 3hp 2-stroke outboard
- Double life lines with gates
- Continuous 360 degree rubrail
- (5) Life jackets
- Swim platform w/ladder
- Lewmar electric windlass
- Throwable horseshoe
- Hot/cold cockpit shower
- Outboard motor mount
- Mid-ship cleats
- foredeck light
- (2) dorade vents
- (1) Boat hook
- (1) Rod holder
- (7) Deck hatches w/screens

- Sunbrella Pedestal cover
- Bottom painted by Hinckley 05/16/2016

---

## Electronics & Navigation Equipment

---

- Single Yanmar 1999 50 HP Diesel IB with 2830 hours
- Coupling flange (transmission to shaft NEW 2013)
- PSS dripless shaft seal installed (complete set) (NEW 2013)
- 50 Amp alternator (NEW 2014)
- (2) Marine Air air conditionings: 8,000 & 16,000 BTU
- Rudder with SS shaft replaced (NEW 2013)
- (11) Through hulls below waterline (NEW 2013)
- The engine box can be completely removed, offering access to the engine from all sides
- 6 gal water heater (NEW 2015)
- Tank monitor system (NEW 2014)
- Forward and aft sump drain boxes installed (NEW 2014)
- Cutlass bearing (NEW 2013)
- New single lever shifter/throttle control assembly and cables
- Automatic and manual bilge pumps
- Fresh water cooling system
- Fuel filters for engine
- (1) manual holding tank head w/Y-valves and macerator
- 3 Blade propeller
- Single lever engine controls
- Triax TV antenna
- Raw water sea strainers
- Edson manual wheel steering
- Shower sumps (NEW 9/2014)
- Impeller replaced 05/2015
- New cutlass bearing 2013

---

## Electrical Equipment

---

- 12v DC system
- 110v AC system
- (2) 30amp shore power with SmartPlugs on the shore power inlets and cables (NEW 2016)
- (4) 6v DC 220 amp/h deep cycle wet cell batteries (NEW 2014)
- Power Sterling 60amp Battery charger with remote display (NEW 2013)
- Xantrex 600w pure sine wave inverter including remote control (NEW 2016)
- 50amp alternator (NEW 2014)
- 285 watt Solar panel with Blue Sky 3000i MPPT solar controller including remote panel
- (2) MarineAir air-conditioning units: 8,000 & 16,000 BTU

- Starter battery Group 27 sealed cell (NEW 2013)

---

## Исключения

---

При продаже яхты исключаются личные вещи владельца.

---

## Отказ от ответственности

---

Компания предоставляет описание судна или яхты добросовестно, но не может гарантировать точность этой информации, а также не ручается за техническое состояние. Покупатель должен проинструктировать своих агентов или оценщиков исследовать представленную информацию более подробно, по собственному желанию. Продажа судна или яхты, изменение цены или снятие с продажи будет происходить без предварительного уведомления.

# ФОТОГРАФИИ

**Salon - forward**



**Under Sail**



**At Anchor**



**At Anchor**



**Peaceful Sunset**



**Underway - power**



**Salon - aft**



**Salon Settee**



**Galley**



**Salon forward to port**



**Portside Settee**



**Nav Station**

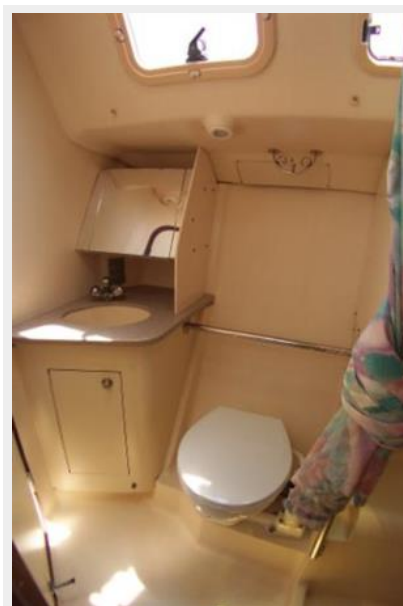




**AC/DC Panel**



**Aft Day Head**



**Shower in Aft Head**



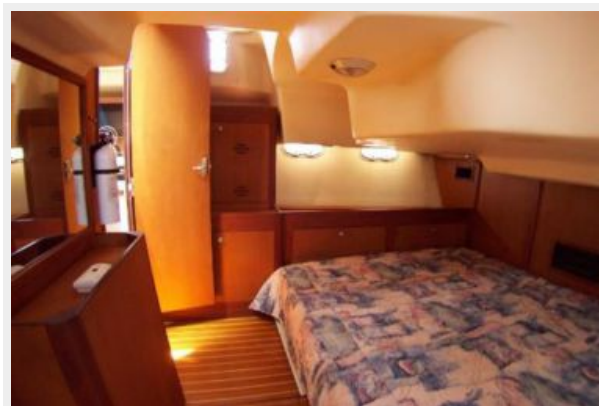
**Aft Berth**



**Aft Berth to portside**



**Aft Stateroom to starboard**



**Guest Stateroom looking aft to port**



**Guest Stateroom**



**Guest Berth**



**Guest ensuite Head**



**Cockpit aft**



**Deck**



**Cabin profile**



**Mast/Double Spreaders**



**Ground Tackle**



**Cabin profile**



**Solar Panel**



**Deck profile**



**Dinghy/Hoist/Solar Panel**



**Engine Instrument Panel**



**Steering Pedestal**



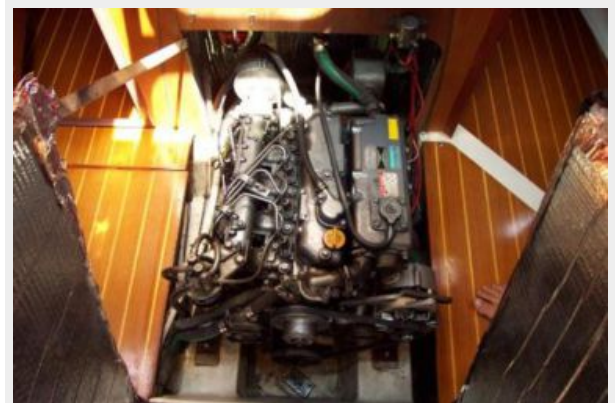
**Cockpit - forward**



**Deep Frezer and Refer**



**Yanmar 50HP Engine**



**Transmission & Stuffing Box**



**Cockpit - aft**



### Rudder and Running Gear



### Stern profile



### Starboard Aft Quarter



### Floor Plan



### Manufacturer provided image



### Bottom Painted 5/16/16



### Bottom Painted 5/16/16





# КОНТАКТЫ

---

Андрей Шестаков (Andrey Shestakov) – ведущий яхтенный брокер отдела продаж яхт и судов компании Shestakov Yacht Sales Inc. Официальный представитель Shestakov Yacht Sales Inc. для русскоговорящих клиентов в центральном офисе компании в Майами/Форт Лодердейл/Флорида/США.

## Контактная информация

---

Email: [andrey@shestakovyachtsales.com](mailto:andrey@shestakovyachtsales.com)

Web: [shestakovyachtsales.com](http://shestakovyachtsales.com)

## Телефоны

---

Краснодарский край: **+7(918)465-66-44**

США, Майами, Флорида: **+1(954)274-4435**

## Время работы

---

Понедельник – Суббота: **9:00 - 21:00**  
EDT

Воскресенье: **Закрито**

## Адрес

---



Harbour Towne Marina, 850 NE 3rd St,  
STE 213, Dania, FL 33004