

CARLA D'OR — PRINCESS YACHTS



Builder: PRINCESS YACHTS

Year Built: 2003

Model: Motor Yacht

Price: PRICE ON APPLICATION

Location: France

LOA: 66' 7" (20.27m)

Beam: 16' 7" (5.05m)

Max Draft: 4' 6" (1.35m)

Cruise Speed: 26 Kts. (30 MPH)

Max Speed: 37 Kts. (43 MPH)

Our experienced yacht broker, Andrey Shestakov, will help you choose and buy a yacht that best suits your needs **CARLA D'OR — PRINCESS YACHTS** from our catalogue. Presently, at Shestakov Yacht Sales Inc., we have a wide variety of yachts available on our sale's list. We also work in close contact with all the big yacht manufacturers from all over the world.

If you would like to buy a yacht **CARLA D'OR — PRINCESS YACHTS** or would like help answering any questions concerning purchasing, selling or chartering a yacht, please call **+1(954)274-4435**

TABLE OF CONTENTS

TABLE OF CONTENTS	2
SPECIFICATIONS	3
Overview	3
Basic Information	3
Dimensions	3
Speed, Capacities and Weight	3
Accommodations	4
Hull and Deck Information	4
Engine Information	4
PHOTOS	5
CONTACTS	13
Contact details	13
Telephones	13
Office hours	13
Address	13

SPECIFICATIONS

Overview

Boat in truly excellent condition, with one owner from new. All service history in record and available on request. The boat is been painted in 2014 and all teak decks have been done new in 2015. Just finished all annual shipyard work and she is ready to go. Berth available and can be part of the deal. Must sold now!!

Basic Information

Category: Motor Yacht

Sub Category: Fast

Model Year: 2002

Year Built: 2003

Country: France

Dimensions

LOA: 66' 7" (20.27m)

Beam: 16' 7" (5.05m)

Max Draft: 4' 6" (1.35m)

Speed, Capacities and Weight

Cruise Speed: 26 Kts. (30 MPH)

Max Speed: 37 Kts. (43 MPH)

Gross Tonnage: 25 Pounds

Water Capacity: 528.344104 Gallons

Fuel Capacity: 792.516156 Gallons

Accommodations

Total Cabins: 3

Total Berths: 6

Sleeps: 6

Total Heads: 3

Captain Cabin: True

Crew Berths: 1

Crew Sleeps: 1

Crew Heads: 1

Hull and Deck Information

Hull Material: GRP

Deck Material: GRP

Hull Color: White

Hull Finish: Stainless Steel

Engine Information

Engines: 2

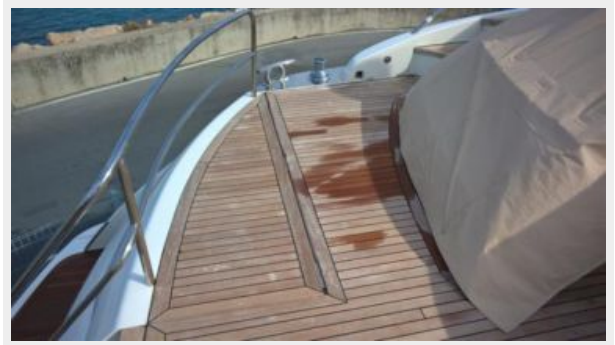
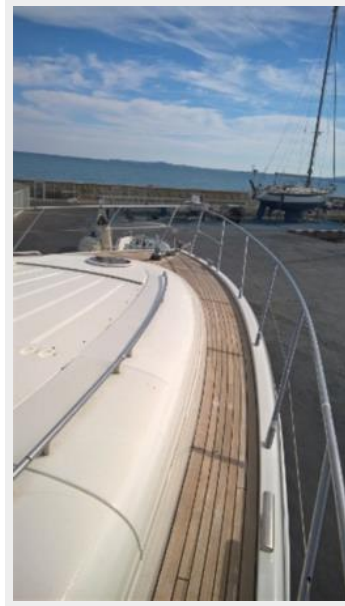
Manufacturer: MAN

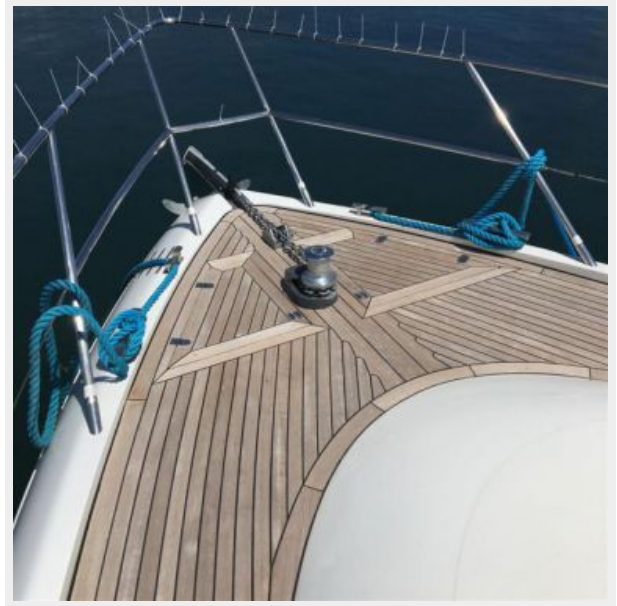
Engine Type: Inboard

Fuel Type: Diesel

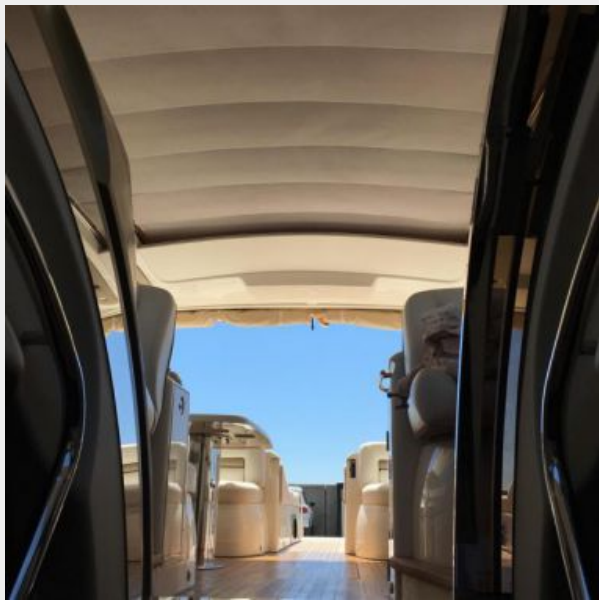
PHOTOS

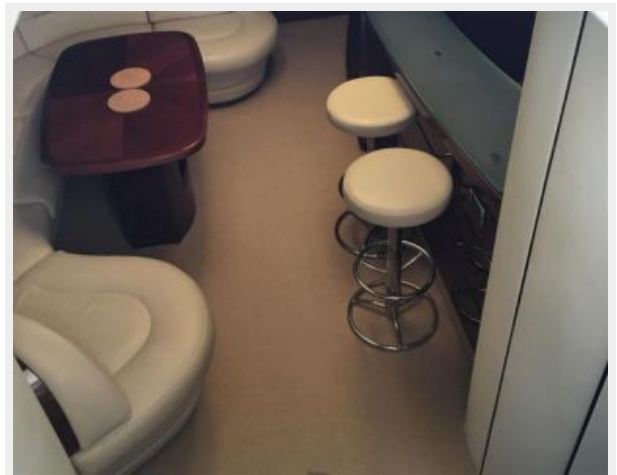


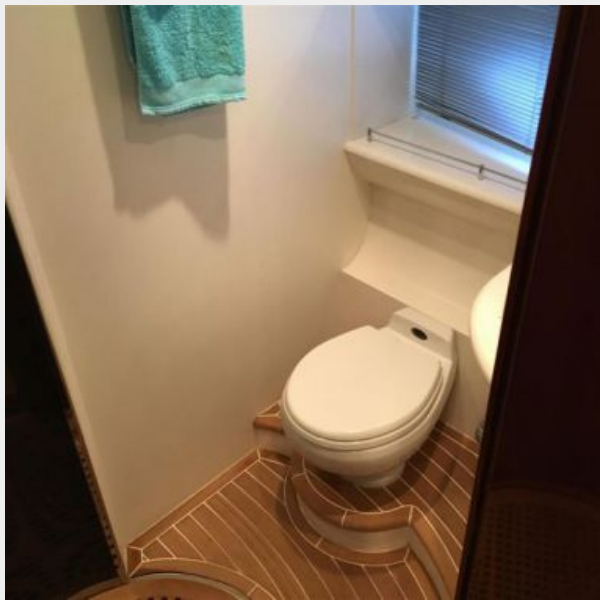


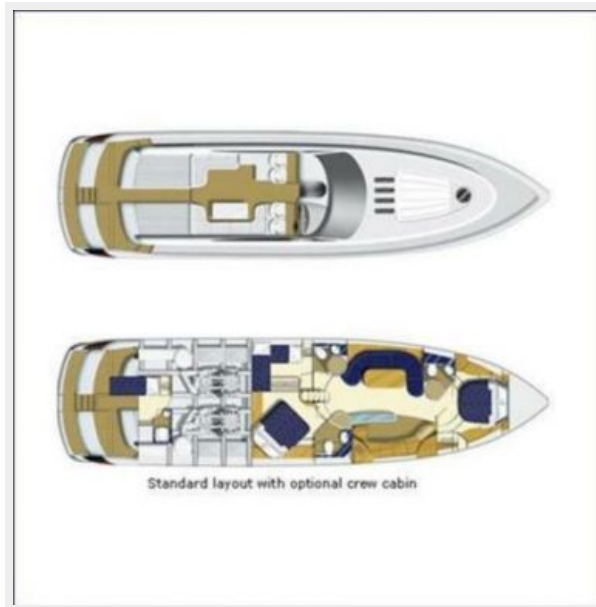
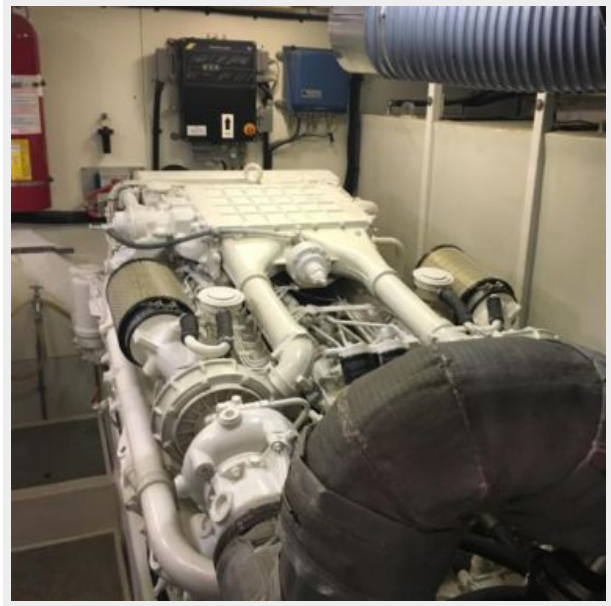












CONTACTS

Andrey Shestakov, leading yacht broker of the sales department of Shestakov Yacht Sales Inc. Shestakov Yacht Sales Inc., the official representative of the Miami/Fort Lauderdale FL headquarters.

Contact details

Email: andrey@shestakovyachtsales.com

Web: shestakovyachtsales.com/en/

Telephones

USA: +1(954)274-4435

Office hours

Monday – Saturday: **9:00 - 21:00** EDT

Sunday: **closed**

Address



Harbour Towne Marina, 850 NE 3rd St,
STE 213, Dania, FL 33004