

SEA DAWG — BERTRAM



Builder: BERTRAM

Year Built: 1970

Model: Sport Fisherman

Price: PRICE ON APPLICATION

Location: United States

LOA: 35' 0" (10.67m)

Beam: 13' 3" (4.04m)

Max Draft: 3' 2" (0.97m)

Our experienced yacht broker, Andrey Shestakov, will help you choose and buy a yacht that best suits your needs **Sea Dawg — BERTRAM** from our catalogue. Presently, at Shestakov Yacht Sales Inc., we have a wide variety of yachts available on our sale's list. We also work in close contact with all the big yacht manufacturers from all over the world.

If you would like to buy a yacht **Sea Dawg — BERTRAM** or would like help answering any questions concerning purchasing, selling or chartering a yacht, please call **+1(954)274-4435**

TABLE OF CONTENTS

TABLE OF CONTENTS	2
SPECIFICATIONS	4
Overview	4
Basic Information	4
Dimensions	4
Speed, Capacities and Weight	4
Hull and Deck Information	4
Engine Information	5
DETAILED INFORMATION	6
Accommodations	6
Galley/Salon	6
Flybridge/Electronics	6
Engine Room/Mechanical Systems	7
Electrical System	7
Cockpit/Fishing	7
Deck/Hull	8
Upgrades	8
Specifications	8
Exclusions	9
Disclaimer	9
Exclusions	9
Disclaimer	9
PHOTOS	10
CONTACTS	16
Contact details	16
Telephones	16
Office hours	16
Address	16

SPECIFICATIONS

Overview

MAJOR REFIT TO INCLUDE: 370 HP CUMMINS ENGINES - GENERATOR - INTERIOR - HARDTOP & MUCH MORE!!!

The Bertram 35 Convertible was produced from 1970 thru 1986 and few boats can rival the long production run enjoyed by the 35 Convertible. She is most at home as a fishing boat, however her interior layout is well suited for family cruising. Major up-grades from 2002 to 2004 include New 6BTA5.9 Cummins Diamond Performance Series Engines 370 HP each, Glassed-In Front Windshield, Frameless Windows, Back Bulkhead w/ Center Hinged Swing Doors, Carbon Fiber Cockpit, Phasor 7KW Generator, New Wiring, New Interior, Electronics and much more. She's very economical to operate and ready to cruise or fish. Call Central Listing Broker for complete details.

Basic Information

Category: Sport Fisherman

Model Year: 1970

Year Built: 1970

Country: United States

Dimensions

LOA: 35' 0" (10.67m)

Beam: 13' 3" (4.04m)

Max Draft: 3' 2" (0.97m)

Speed, Capacities and Weight

Displacement: 22500 Pounds

Water Capacity: 50 Gallons

Fuel Capacity: 285 Gallons

Hull and Deck Information

Hull Material: Fiberglass

Engine Information

Engines: 2

Manufacturer: Cummins

Model: 6BTA

Engine Type: Inboard

Fuel Type: Diesel

DETAILED INFORMATION

Accommodations

Starting forward, the Master stateroom features a large V-Berth with two opening side ports and overhead hatch. There is a hanging locker and drawer storage, and a privacy door. Aft to port is a hanging locker and chest of drawers. Starboard side Head with large stall shower, electric head, sink and vanity with hot & cold pressure water. Up three steps is the main salon with an L-Shaped Galley to port, a sofa with storage below and port side built-in. The interior sole is new carpet throughout, glassed in front windshield and all frameless windows. Center-line dual hinged doors have been added for easy access to the large cockpit and ladder leading to the Flybridge and Helm.

Galley/Salon

Stepping up into the galley / salon area you will find the galley running along the port side with ample storage drawers and a long countertop with under-mount sink, 2 burner stove and counter microwave & toaster oven. The salon sofa's along the starboard side, Samsung Flat Screen TV on forward dash.

- U-Line Under Counter Refrigerator
- GE Microwave Oven
- Kenyon 2 Burner Cooktop
- Large Custom Corian Counter Top w/ 7 Drawers & Cabinet Storage
- Pressure, Dockside Fresh Water System
- E-Max Hot Water System
- Under-Mount Custom Sink
- New Headliner
- 7 New 12 Volt Overhead Lights

Flybridge/Electronics

A new Custom Hardtop with a 4 side enclosure surrounds the Bridge. There are two Pompanette helm and companion chairs, a custom canvas cover for the helm and electronics and lockable radio box which houses an Icom VHF Radio and the Stereo.

- Garmin 2010C GPS Color Chart Plotter
- Furuno 72 Mile Radar/Chart Plotter/Sounder
- Robertson AP-22 Auto Pilot
- 2 - Icom IC-M502 VHF Radios
- ACR Remote Search Light
- Danforth Constellation 7" Compass

Engine Room/Mechanical Systems

- Twin Cummins 6BTA5.9 Diesel Engine 370HP Each
- Engine Alarms
- Emergency Engine Stops
- Racor Fuel Filters
- Fuel Shut Off Valve On Tanks
- Halogen Fire System
- Nibral Propellers
- Fuel Transfer Pump
- High Water Alarm
- Flybridge Engine Controls
- Prop Shafts 1 3/4

- Two Reverse Cycle AC Heat 6,000BTU - 12,000BTU
- Fresh Water Cooling System
- Fire Extinguishers
- Hydraulic Trim Tabs
- Numerous Spare Parts
- Lube Oil Transfer System
- Raritan Electric Head, Holding Tank & OB Discharge
- Hydraulic Wheel Steering
- Automatic & Manual Bilge Pumps
- Dripless Shaft Seals

Electrical System

- Phasor Generator W/ 1988 Hours
- 8D Battery For Generator
- 2 - 8D Batteries For Engines
- 12V DC & 110V AC Electrical Systems
- Twin Battery Selector Switches
- Dockside Electrical Cable
- 30 AMP Automatic Battery Charger

Cockpit/Fishing

The deep/safe cockpit with wide gunwales gives the safe and secure feeling that you expect from a Bertram. A cockpit fighting chair was recently installed but could easily be swapped for a pedestal table. Fresh and raw water washdown outlets, plus a fresh water water inlet are located here. The cockpit spreader lights will light up the night for an evening of fun.

Deck/Hull

- Delta 20# Anchor w/ Rode
- Quick Electric Windlass
- Remote Controlled Search Light
- Cockpit Boarding Ladder
- Cockpit Deck Has Been Replaced

- Glassed -In Front Windshield
- Frameless Windows
- Replaced Back Bulkhead & Centerline Doors
- Stainless Steel Bow Railings, Bridge & Ladder
- Fresh & Saltwater Wash Downs

Upgrades

- Twin 330HP Cummins Engines
- Glassed-In Front Windshield
- Frameless Side Windows
- Back Bulk w/ Double Hinged Doors (Swing Out)
- Engine Room Access Hatches in Salon
- Refurbished and Strengthened Salon Base Flooring- Epoxy
- (75%) Engine Room Sound Shielding
- Custom Hardtop w/ Full Enclosure

- Phasor 7 KW Generator
- Exterior & Engine Room Paint
- Bilge Pumps/Water Alarm System
- Rewired Electrical System in Electronics Box to Helm Breakers
- Cockpit Deck w/ Port Storage & Starboard Livewell
- Interior Headliner
- Galley Countertops
- U-Line Refrigerator
- 2 Burner Cooktop

Specifications

LOA: 35 Feet, 4 Inches

BEAM: 13 Feet, 3 Inches

DRAFT: 3 Feet, 2 Inches

WEIGHT: 22,500 Pounds

HULL TYPE: Deep-Vee

PROPULSION: CUMMINS 6BTA5.9 DIESEL ENGINES 370 HP EACH

TANKAGE: 285 Gallons Fuel, 50 Gallons Water

Exclusions

While every effort was made to include all pertinent included equipment aboard "SEA DAWG", there are some personal items aboard. Prospective purchasers should assume any item not specifically mentioned herein would not convey at closing. Refer specific items in question to the listing broker.

Disclaimer

While we attempt to display current and accurate data, this listing may not reflect the most recent transactions or may contain occasional data entry errors. Selling agent makes no warranties, express or implied, regarding the content or availability of the products described herein. All inventory listed is subject to availability and prior sale. Please consult selling agent for details. Prices are quoted for the USA only and may not include transportation, taxes, or other applicable charges. Photographs may be representative only and may vary somewhat from the actual items offered for sale. We will not be responsible for inaccurate data obtained from our site. Please check with your local dealer to ensure that you have the latest information available. Information on this web site could include technical inaccuracies or typographical errors. Changes may be periodically made to the information or the products herein. Questions or comments regarding these policies may be directed to website hosting agent.

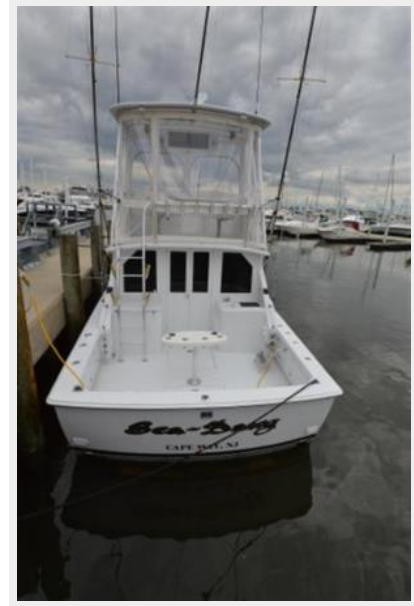
Exclusions

Owner's personal belongings.

Disclaimer

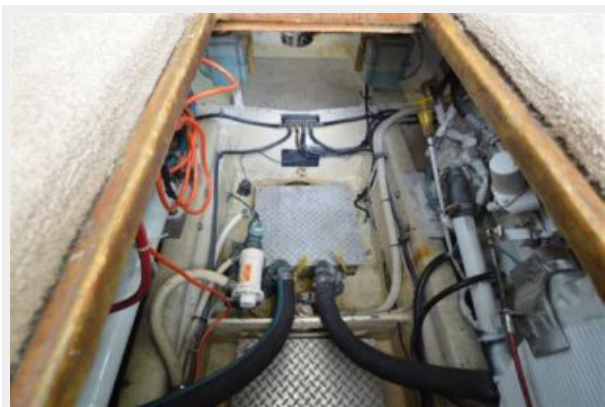
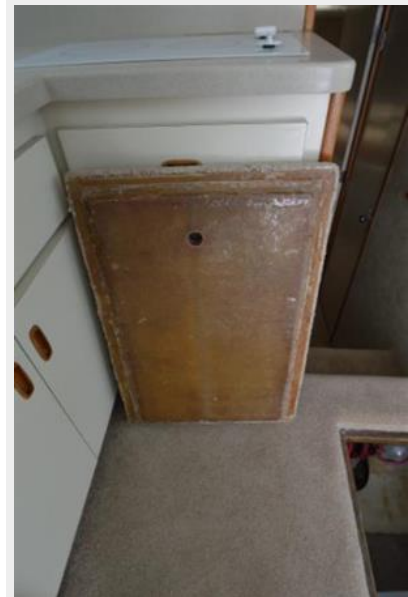
The Company offers the details of this vessel or yacht in good faith but cannot guarantee or warrant the accuracy of this information nor warrant the condition of the vessel. A buyer should instruct his representatives, agents, or his surveyors, to investigate such details as the buyer desires validated. This vessel or yacht is offered subject to prior sale, price change, or withdrawal without notice.

PHOTOS













CONTACTS

Andrey Shestakov, leading yacht broker of the sales department of Shestakov Yacht Sales Inc. Shestakov Yacht Sales Inc., the official representative of the Miami/Fort Lauderdale FL headquarters.

Contact details

Email: andrey@shestakovyachtsales.com

Web: shestakovyachtsales.com/en/

Telephones

USA: +1(954)274-4435

Office hours

Monday – Saturday: **9:00 - 21:00** EDT

Sunday: **closed**

Address



Harbour Towne Marina, 850 NE 3rd St,
STE 213, Dania, FL 33004