

38FT 2005 SILVERTON CONVERTIBLE — SILVERTON



Судостроитель: SILVERTON

Длина общая: 38' 0" (11.58m)

Год постройки: 2005

Макс. осадка: 3' 7" (1.09m)

Модель: Катер для спортивной рыбалки

Цена: ЦЕНА ЯХТЫ ПО ЗАПРОСУ

Местонахождение: United States

Купить 38ft 2005 Silverton Convertible — SILVERTON а также выбрать подходящую вам яхту из нашего каталога яхт вам поможет опытный яхтенный брокер Андрей Шестаков. На сегодняшний день компания Shestakov Yacht Sales Inc. имеет большое количество яхт в собственном списке продаж, а также тесно сотрудничает со всеми крупными яхтенными производителями по всему миру. Для того чтобы купить яхту 38ft 2005 Silverton Convertible — SILVERTON а также проконсультироваться по любому вопросу связанному с покупкой, продажей, чартером яхт позвоните по телефону **+7(918)465-66-44**.

ОГЛАВЛЕНИЕ

ОГЛАВЛЕНИЕ	2
ХАРАКТЕРИСТИКИ	5
Обзор	5
Основная информация	5
Размеры	6
Скорость, вместимость и масса	6
Размещение	6
Корпус и палуба	6
Информация о двигателе	6
ПОДРОБНОЕ ОПИСАНИЕ	7
Salon	7
Dinette	7
Galley	7
Companionway	8
Master Stateroom	8
Guest Stateroom	8
MASTER ENSUITE GUEST HEAD	9
MASTER ENSUITE AND GUEST SHOWER	9
FLYBRIDGE	9
Electronics and Navigation	10
Cockpit	10
Hull and Deck	11
ENGINE ROOM	11
Optional Equipment	12
Исключения	12
Отказ от ответственности	12
ФОТОГРАФИИ	13
Forward Quarter View	13

Salon Entrance Door	13
Salon View Forward	13
Salon Convertible Settee Sleeper	13
Dining L-Shaped Settee	13
Galley	13
Companionway Forward	14
Master Statroom Forward	14
Master Side View	14
Master View Aft	14
Master Shower Entrance	14
Master Ensuite Head Entrance	14
Master And Guest Head	15
Guest Stateroom Portside	15
Guest Shower Entrance	15
Companionway View Aft	15
Salon View Aft	15
Flybridge	15
Flybridge Stairwell	16
Flybridge Seating	16
Helm Console Aft View	16
Helm Chairs	16
Electronics Covered	16
Helm Electronics	16
Cockpit	17
Custom Large Cockpit Freezer	17
Cockpit Starboard View	17
Cockpit Port View	17
Transom	17
Kohler Generator Lazarette	17

Engine Room Access	18
Port Engine	18
Bow	18
Starboard Engine	18
Stern View	18
КОНТАКТЫ	19
Контактная информация	19
Телефоны	19
Время работы	19
Адрес	19

ХАРАКТЕРИСТИКИ

Обзор

Vessel is meticulously maintained by the owner. Cushions and electronics are fairly new and the isinglass was replaced recently, four months ago and is crystal clear. Last years service includes new impellers, an oil change and new bottom paint. Vessel is ready for cruising the Bahamas or the Florida Keys. Summer is here. Perfect for spending quality time with your family and friends.

Entering the salon, the L-shaped Ultra-Leather settee is to port and the convertible settee sleeper is across to starboard. The living area is on one level that includes the salon and dinette, galley is down starboard side. The berths are located down three steps and forward.

Owners cabin is forward with a double berth and a private entry into the split head that includes a separate stand alone shower. Cedar lined closets, cabinets and drawer storage offer an abundance of storage.

Aft of the master to port is the split head and entrance to the guest stateroom. The port stateroom has twins and a filler that make it a double also with private access to the guest shower. Across is the separate master and guest head.

The molded in staircase with hand rails gets you onto the flybridge with seating for eight and a fully equipped helm station. The isinglass enclosure is crystal clear. The helm chairs and all cushions look new.

The roomy cockpit has a custom one of a kind large built-in freezer perfect for those trips to the Bahamas. Perfect for fishing offshore with your buddies or bottom fishing with the kids. Transom door leads to a nice size swim platform with a built in ladder, making it easy for your family to get into the water to enjoy all the water sports and then back on the boat.

The vessel is washed and waxed on a regular basis and the gel-coat looks great. Vessel shows extremely well. This vessel will create lifetime memories for you and your family.

Easily viewed in North Miami.

Основная информация

Тип судна: Катер для спортивной рыбалки

Подкатегория: Convertible

Модельный год: 2005

Год постройки: 2005

Страна: United States

Размеры

Длина общая: 38' 0" (11.58m)

Макс. осадка: 3' 7" (1.09m)

Трапы: 16' 8" (5.08m)

Длина привального бруса: 41' 0"
(12.50m)

Скорость, вместимость и масса

Водоизмещение: 26480 Pounds

Вместимость воды: 100 Gallons

Вместимость сточного бака: 40 Gallons

Объем топливного бака: 360 Gallons

Размещение

Всего кают: 2

Всего коек: 3

Всего ком. состава: 1

Корпус и палуба

Материал корпуса: Fiberglass

Информация о двигателе

Двигатели: 2

Производитель: Yanmar

Модель: 6LY2

Тип двигателя: Inboard

Тип топлива: Diesel

ПОДРОБНОЕ ОПИСАНИЕ

Salon

- Sliding entrance door with sun curtain
- Aft full window with sun curtain
- Port and starboard opening side windows with blinds
- Front brow windows with sun cover outside
- Windows treatments
- Cherry wood joinery throughout interior
- Overhead lighting
- Carpeted with full carpet runner
- Ultra leather beige L-shaped settee port side w/ dinette table
- Ultra leather settee starboard side converts to a double
- Samsung flat screen TV in aft port cabinet
- Glomex TV antenna gain control
- Bose sound system w/ 2 speakers
- Marine air w/ reverse cycle heat, 16000 BTU's
- Receptacle, 110 VAC outlet (3)
- Electrical Panel 120/240 VAC, 12VDC
- Battery management system
- Tank monitor, holding and fresh water
- CO detector and smoke detector
- Galley forward port side
- A/C thermostat control
- Safe-T-Alert SA1XL gas fume detector

Dinette

- Located in salon
- Dinette /coffee table hi/lo
- Dinette table seats six
- L-shaped ultra leather beige seating with storage below

Galley

- Corian counter tops
- Wood laminate flooring
- Deep circular SS sink
- Single lever pull out faucet and soap dispenser
- Sharp Carousel microwave convection oven

- Princess Euro Kera 3 burner cook top
- Noah Kool refrigerator below counter top
- Nova Kool freezer with ice make below counter top
- Storage cabinets and slide out drawer storage
- Storage beneath counter top
- Two 110 VAC outlets
- Overhead lighting

Companionway

- Three steps down w/ hand rail
- Two Overhead lights
- Step accent lights
- Central vacuum
- Carpet runner
- Floor hatch to macerator system
- Storage drawer floor level

Master Stateroom

- Located forward
- Six overhead lights
- Overhead hatch
- Inner spring mattress
- Full island queen double berth
- Side storage two compartments under berth
- Storage three drawers under berth
- Custom bedspreads and pillow shams
- Vinyl side wall coverings
- Birds eye side Maple shelves each night stand
- Air conditioning thermostat
- Carbon monoxide detector
- Receptacle, 110 VAC (2)
- Cedar lined large hanging close
- Accent lighting floor level
- Private entrance to ensuite head

Guest Stateroom

- Located port side
- Twin berths side by side converts to double

- Custom bedspreads and pillow shams
- Overhead lighting
- Reading lights
- Cedar lined closet
- Storage drawers (4)
- Upper storage cabinet
- Vicar CO detector
- Carpet with runner
- Courtesy lights
- Entrance door to guest stand alone shower

MASTER ENSUITE GUEST HEAD

- Starboard side behind master
- Overhead skylight
- Overhead lighting
- Mirrored medicine cabinets
- Corian sink top with single lever faucet
- Exhaust fan, 110 VAC outlet
- Second mirrored cabinet above head
- Standup full shower with hot and cold water
- Vacuflush head
- Towel racks (2)
- Fiberglass flooring

MASTER ENSUITE AND GUEST SHOWER

- Port side
- Stand alone shower w/ shower curtain
- Master and guest private entrance to shower
- Single lever faucet
- Overhead lights
- Mirror

FLYBRIDGE

- Hardtop with overhead hatch access
- Overhead electronics cabinet
- Overhead lighting and deck lighting
- Helm station with two helm chairs
- Forward bench seating with storage below

- Forward storage cabinet
- Flybridge seating for 8
- Storage below helm station electronics
- Rod holders (6) and drink holders (6)
- SS Stairway guard rails and hand rails
- JL Audio speakers
- Spreader lights
- New isinglass full enclosure, crystal clear

Electronics and Navigation

- Full helm station w/ storage below
- Navigation lights
- Ritchie compass
- Faria gauges
- ICOM VHF IC-M502
- Garmin GPS Map 5212 Multi Function Display
- Garmin GPS Map 740S Multi Function Display
- Simrad AP 20 (auto pilot)
- Clarion CMD8 Sirius XM Radio
- Dual lever engine shift control
- Navigation chip plugin
- Fusion Control MS-WR600 stereo control
- Sea Star hydraulic steering
- Two helm chairs
- Fuel gauge on helm dash
- AC/DC Switch panels
- Engine ignition key switches
- Bridge electric helm switches below helm
- Sea Fire manual/auto fire engine shutdown system

Cockpit

- Salon entry door
- JL Speakers
- Molded staircase to flybridge with hand rails
- Engine room access
- Custom large freezer
- Transom door to swim platform
- Transom storage compartment
- Hot and cold shower
- Table top cleaning station, portable

- In-deck hatches, also allows lazarette access
- Cable master connection, shore power breakers
- SS Scuppers deck drains
- Rod holders, 6 in gunwale
- SS hawse pipes w/ 2 SS cleats
- Deck and overhead lighting
- Two electric reel outlets in transom
- Swim platform w/ integrated ladder and 2 cleats
- Kohler generator 13kw, just 790 hours in lazarette

Hull and Deck

- Electric / 50 amp service, 12/24 VDC, 120/240 VAC
- Port side deck/ waste hook-up pump-out
- Starboard side deck/ diesel fill/ water fill
- Steps and lighting on side decks
- Two air conditioning zones
- AFI electric horns on brow
- Maxwell windlass w/ foot controls
- Bow pulpitt
- Anchor w/ rope locker
- Windshield bra solid sun cover
- Molded non-skid decks
- Automatic bilge pumps
- High water alarm
- Bennett trim tabs
- SS rails, SS hand rails
- Zincs

ENGINE ROOM

- Twin Yanmar 6LY2 diesel engines, 440 hp each
- Yanmar engines with just 492 hrs
- Main engine seacocks
- Kohler Generator 13 KW, with 790 hrs in lazarette
- Generator seacocks with strainers
- Batteries in boxes
- Engine room blowers
- Racor filters
- Dripless shaft seals
- Rule bilge pump w/ auto float switch
- Fuel tanks

- Water tanks
- Engine room overhead lights
- Receptacle outlet, 110vac
- Fire suppression extinguishing system

Optional Equipment

- Interior carpet runners
- CD changer in master
- Livewell in cockpit
- Wash down-fresh water- fore-deck
- Kohler Generator 13KW, Diesel
- Linen package
- Water heater- 20 gallon
- Bridge hardtop enclosure

Исключения

При продаже яхты исключаются личные вещи владельца.

Отказ от ответственности

Компания предоставляет описание судна или яхты добросовестно, но не может гарантировать точность этой информации, а также не ручается за техническое состояние. Покупатель должен проинструктировать своих агентов или оценщиков исследовать представленную информацию более подробно, по собственному желанию. Продажа судна или яхты, изменение цены или снятие с продажи будет происходить без предварительного уведомления.

ФОТОГРАФИИ

Forward Quarter View



Salon Entrance Door



Salon View Forward



Salon Convertible Settee Sleeper



Dining L-Shaped Settee



Galley



Companionway Forward



Master Statroom Forward



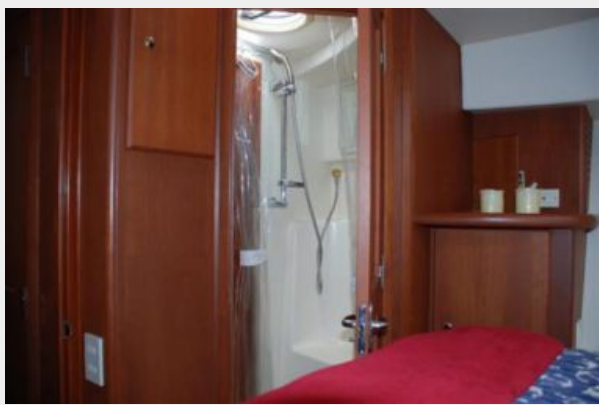
Master Side View



Master View Aft



Master Shower Entrance



Master Ensuite Head Entrance



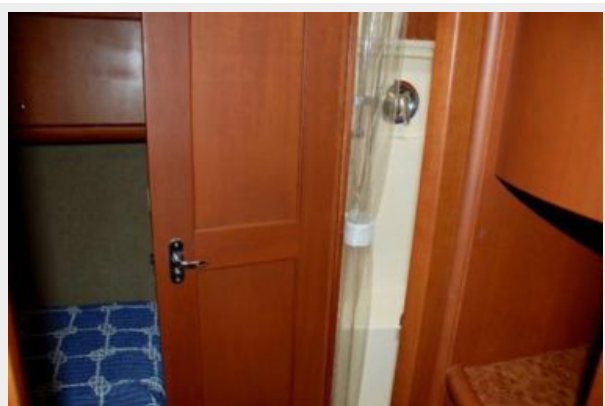
Master And Guest Head



Guest Stateroom Portside



Guest Shower Entrance



Companionway View Aft



Salon View Aft



Flybridge



Flybridge Stairwell



Flybridge Seating



Helm Console Aft View



Helm Chairs



Electronics Covered



Helm Electronics



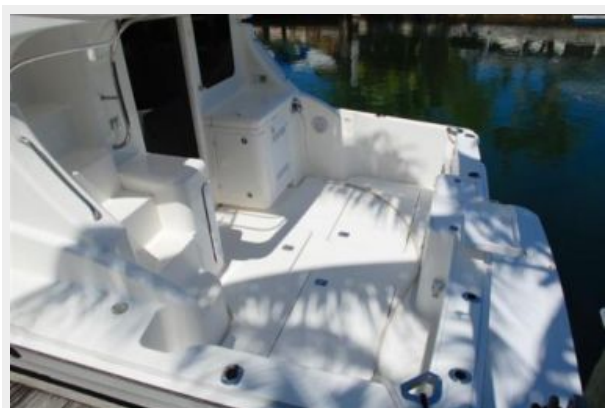
Cockpit



Custom Large Cockpit Freezer



Cockpit Starboard View



Cockpit Port View



Transom



Kohler Generator Lazarette



Engine Room Access



Port Engine



Bow



Starboard Engine



Stern View



КОНТАКТЫ

Андрей Шестаков (Andrey Shestakov) – ведущий яхтенный брокер отдела продаж яхт и судов компании Shestakov Yacht Sales Inc. Официальный представитель Shestakov Yacht Sales Inc. для русскоговорящих клиентов в центральном офисе компании в Майами/Форт Лодердейл/Флорида/США.

Контактная информация

Email: andrey@shestakovyachtsales.com

Web: shestakovyachtsales.com

Телефоны

Краснодарский край: **+7(918)465-66-44**

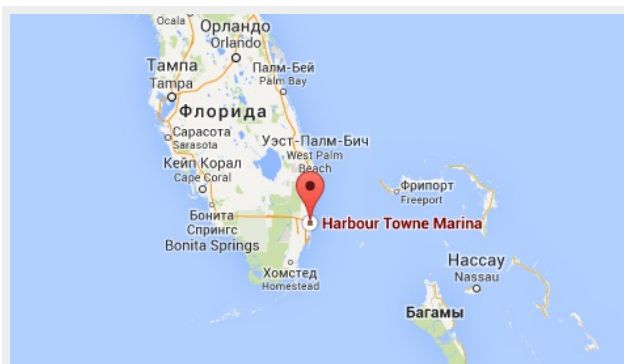
США, Майами, Флорида: **+1(954)274-4435**

Время работы

Понедельник – Суббота: **9:00 - 21:00**
EDT

Воскресенье: **Закрето**

Адрес



Harbour Towne Marina, 850 NE 3rd St,
STE 213, Dania, FL 33004