

35FT 2008 LUHRS 35 CONVERTIBLE FLYBR — LUHRS



Builder: LUHRS

Year Built: 2008

Model: Sport Fisherman

Price: PRICE ON APPLICATION

Location: United States

LOA: 35' 0" (10.67m)

Beam: 14' 6" (4.42m)

Max Draft: 3' 0" (0.91m)

Cruise Speed: 25 Kts. (29 MPH)

Max Speed: 30 Kts. (35 MPH)

Our experienced yacht broker, Andrey Shestakov, will help you choose and buy a yacht that best suits your needs 35ft 2008 Luhrs 35 Convertible Flybridge — LUHRS from our catalogue. Presently, at Shestakov Yacht Sales Inc., we have a wide variety of yachts available on our sale's list. We also work in close contact with all the big yacht manufacturers from all over the world.

If you would like to buy a yacht 35ft 2008 Luhrs 35 Convertible Flybridge — LUHRS or would like help answering any questions concerning purchasing, selling or chartering a yacht, please call +1(954)274-4435

TABLE OF CONTENTS

TABLE OF CONTENTS	2
SPECIFICATIONS	3
Overview	3
Basic Information	3
Dimensions	4
Speed, Capacities and Weight	4
Accommodations	4
Hull and Deck Information	4
Engine Information	4
DETAILED INFORMATION	5
ELECTRICAL / MECHANICAL	5
Electronics	5
DECK / FISH EQUIPMENT	5
ACCOMMODATIONS, FURNISHINGS & LAYOUT	6
Manufacturer Provided Description	6
Exclusions	6
Disclaimer	6
PHOTOS	7
Manufacturer Provided Image	7
Manufacturer Provided Image	11
CONTACTS	16
Contact details	16
Telephones	16
Office hours	16
Address	16

SPECIFICATIONS

Overview

JUST REDUCED ! PLUS THIS BEAUTY HAD OVER 10K IN UPGRADES (5/16)

MUST SEE THIS VERY SPECIAL LUHRS !

THIS ONE OWNER 2008 LUHRS 35 CONVERTIBLE SPORTFISH W/ TWIN 480 HP YANMARS IS AN ABSOLUTE MUST SEE TO APPRECIATE BEAUTY !!! THE KNOWLEDGEABLE ORIGINAL OWNER SPARES NO TIME AND EXPENSE IN KEEPING HER IN ABSOLUTE PRISTINE CONDITION FROM THE FLYBRIDGE TO THE ENGINE ROOM...HAVING A DETAILED MAINTENANCE SCHEDULE AND DEDICATION FOR PERFECTION IS WHAT KEEPS THIS 2008 35 LUHRS IN AS NEW CONDITION AS POSSIBLE.

LUHRS PUT ON THEIR THINKING CAPS WHEN THEY DESIGNED THIS 2008 35 CONV.SPORTFISH. FROM THE EZ ACCESS FULL INTEGRATED STAIRCASE TO THE SPACIOUS ENCLOSED FLYBRIDGE , AND THE VERY LARGE ACCESSIBLE ENGINE ROOM..

THE SALON/ CABIN/ GALLEY FEATURES A FULL STAND UP SHOWER MAKES HER A HOME AWAY FROM HOME. ALSO THE WIDE GUNNELS AND HANDRAIL LOCATIONS MAKES IT FOR SAFE MANEUVERABILITY WHILE ON DECK OR GETTING AROUND ON A DAY FISHING!

THIS IS A LOT OF BOAT FOR A 35 CONV/SPORTFISH, AND AS FOR BEING ECONOMICAL, THE YANMARS SIP 3 GPH @ TROLLING SPEED.

RECENT UPGRADES

- NEW ISINGLASS 5/2016 (\$6000.00)
- NEW FURUNO 587 DEPTHFINDER TO 2000 ft - 5/2016 (\$4000.00)
- FRESH BOTTOM JOB (5/2016)

Basic Information

Category: Sport Fisherman

Model Year: 2008

Year Built: 2008

Country: United States

Dimensions

LOA: 35' 0" (10.67m)**Beam:** 14' 6" (4.42m)**Max Draft:** 3' 0" (0.91m)**Clearance:** 16' 0" (4.88m)

Speed, Capacities and Weight

Cruise Speed: 25 Kts. (29 MPH)**Max Speed:** 30 Kts. (35 MPH)**Displacement:** 23500 Pounds**Water Capacity:** 100 Gallons**Holding Tank:** 26 Gallons**Fuel Capacity:** 400 Gallons

Accommodations

Total Cabins: 2**Total Berths:** 6**Total Heads:** 1

Hull and Deck Information

Hull Material: Fiberglass

Engine Information

Engines: 2**Manufacturer:** Yanmar**Model:** 6LY3A**Engine Type:** Inboard**Fuel Type:** Diesel

DETAILED INFORMATION

ELECTRICAL / MECHANICAL

- CENTRAL A/C - 2 UNITS
- HOT WATER HEATER
- KOHLER 9.5 GENERATOR W/ 735 HRS
- BATTERY CHARGER
- OIL CHANGE SYSTEM
- 2 NEW MAIN BATTERIES
- SEPERATE GENERATOR BATTERY
- SEPERATE ELECTRICAL BATTERY
- UPGRADED STAINLESS EXHAUST ELBOWS W/ NEW HOSES [ENGS.]
- ALL NEW BELTS
- **MAINTENANCE / LOG RECORDS AVAILABLE**

Electronics

- AUTO PILOT - RAYMARINE
- GPS-E120 RAYMARINE
- RADAR- RAYMARINE
- FURUNO - RD-30 DEPTH FINDER [additional depth finder]
- VHF RAYMARINE

DECK / FISH EQUIPMENT

- ENCLOSED FLYBRIDGE W/ HARD -TOP
- ICE MAKER [ON BRIDGE]
- WINDLESS
- CUSTOM ALUMINUM BOW RAILING FENDER BASKETS
- LEE OUT RIGGERS
- 6 ROD HOLDERS
- 6 ROCKET LAUNCHERS
- LIVE WELLS / FISH BOXES
- SALTWATER & RAW WATER PUMPS [NEW]
- LARGE ON DECK FREEZER [FACTORY UPGRADE]
- LARGE INTEGRATED SWIM PLATFORM W/ DAVIT BRACKET HOOK UPS
- TRANSOM DOOR
- DECK STEREO SPEAKERS

ACCOMMODATIONS, FURNISHINGS & LAYOUT

- FULL FRONT CABIN W/QUEEN BED AND OVERHEAD CABINETS
- 2 FULL HANGING CLOSET W/LIGHTING
- DRESSERS / FULL BELOW BED STOWAGE
- 2ND PRIVATE CABIN W/FULL BED AND AMPLE CLOSET AND STOWAGE
- LARGE FULL STANDUP SHOWER W/VANITY / HEAD { 2 DOOR ACCESS }
- FULL GALLEY W/FULL FRIDGE/ MICROWAVE LG/ STOVE TOP / SINK
- LARGE SALON W / L -SHAPE SETTEE AND DINING TABLE [folds to bed]
- FULL LEATHER SLEEPER SOFA
- BEAUTIFUL WOOD FLOORING
- RECESSED LIGHTING
- FLAT SCREEN TV
- **BOSE STEREO SYSTEM**

Manufacturer Provided Description

No description

Exclusions

Owner's personal belongings.

Disclaimer

The Company offers the details of this vessel or yacht in good faith but cannot guarantee or warrant the accuracy of this information nor warrant the condition of the vessel. A buyer should instruct his representatives, agents, or his surveyors, to investigate such details as the buyer desires validated. This vessel or yacht is offered subject to prior sale, price change, or withdrawal without notice.

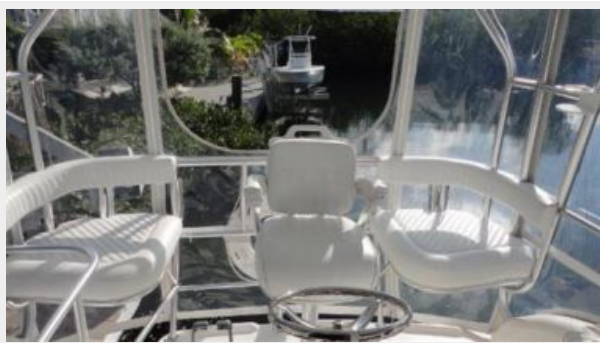
PHOTOS



Manufacturer Provided Image







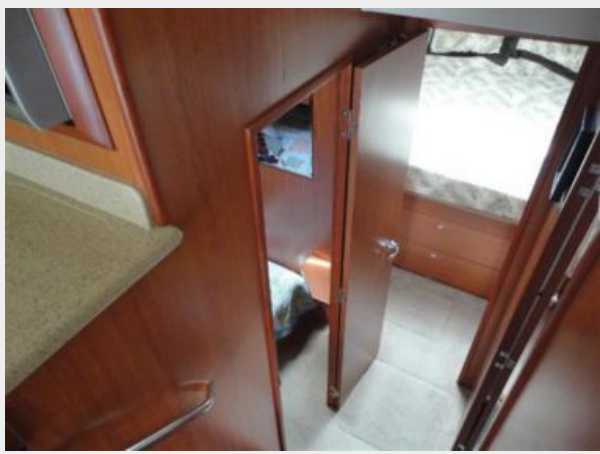


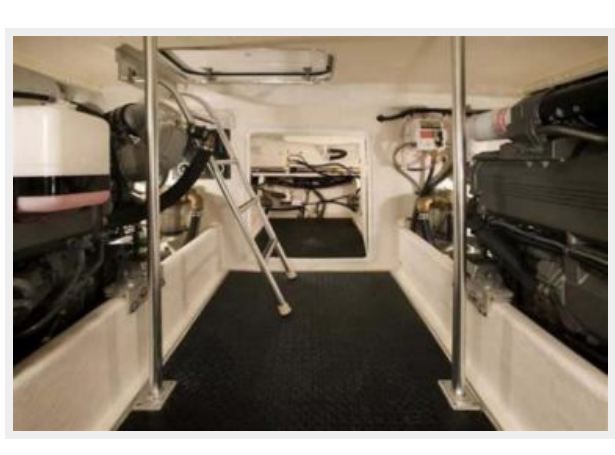
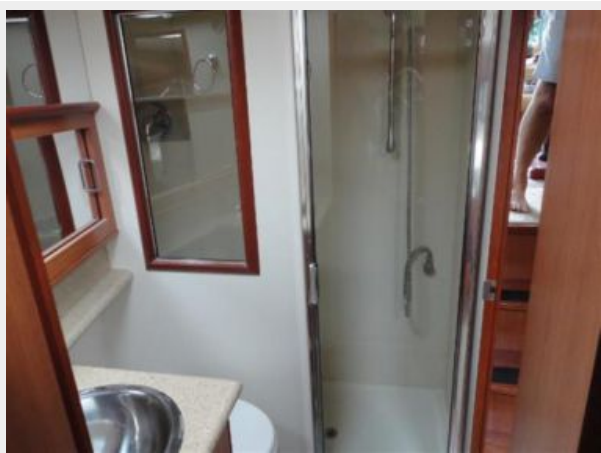


Manufacturer Provided Image











CONTACTS

Andrey Shestakov, leading yacht broker of the sales department of Shestakov Yacht Sales Inc. Shestakov Yacht Sales Inc., the official representative of the Miami/Fort Lauderdale FL headquarters.

Contact details

Email: andrey@shestakovyachtsales.com

Web: shestakovyachtsales.com/en/

Telephones

USA: +1(954)274-4435

Office hours

Monday – Saturday: **9:00 - 21:00** EDT

Sunday: **closed**

Address



Harbour Towne Marina, 850 NE 3rd St,
STE 213, Dania, FL 33004