

58FT 2000 SEA RAY SUPER SUN SPORT — SEA RAY



Builder: [SEA RAY](#)

Year Built: 2000

Model: Cruiser

Price: PRICE ON APPLICATION

Location: United States

LOA: 58' 0" (17.68m)

Beam: 15' 9" (4.80m)

Max Draft: 4' 1" (1.24m)

Our experienced yacht broker, Andrey Shestakov, will help you choose and buy a yacht that best suits your needs 58ft 2000 Sea Ray Super Sun Sport — SEA RAY from our catalogue. Presently, at Shestakov Yacht Sales Inc., we have a wide variety of yachts available on our sale's list. We also work in close contact with all the big yacht manufacturers from all over the world.

If you would like to buy a yacht 58ft 2000 Sea Ray Super Sun Sport — SEA RAY or would like help answering any questions concerning purchasing, selling or chartering a yacht, please call **+1(954)274-4435**

TABLE OF CONTENTS

TABLE OF CONTENTS	2
SPECIFICATIONS	3
Overview	3
Basic Information	3
Dimensions	4
Speed, Capacities and Weight	4
Accommodations	4
Hull and Deck Information	4
Engine Information	4
DETAILED INFORMATION	5
May 2015 Service	5
Manufacturer Provided Description	5
Exclusions	6
Disclaimer	6
PHOTOS	7
Vessel Layout	17
CONTACTS	18
Contact details	18
Telephones	18
Office hours	18
Address	18

SPECIFICATIONS

Overview

58' Sea Ray Super Sun Sport 2000 - Twin 800hp 3406E Caterpillars

- Cherry Finish Interior
- Tender Garage
- Tow Eye
- All Cockpit Upholstery Redone
- Furuno Navpilot Autopilot
- Furuno NavNet Plotter
- Garmin GPSmap 5212 Plotter
- ICOM IC-M502 VHF
- Both Transmissions Fully Rebuilt July 2014
- New Alternators July 2014
- New Starters July 2014
- New Hydraulic Steering August 2014
- New Water Pump August 2014
- All New Impellers and Fluids
- Updated LED Lighting
- New Fresh Water Pump September 2015
- Furuno Navpilot Autopilot Refurbished May 2016
- Furuno NavNet Plotter Refurbished May 2016
- Garmin GPSmap 5212 Plotter Refurbished May 2016
- ICOM IC-M502 VHF Refurbished May 2016
- New Cockpit Stereo November 2015
- New Hot Water Heater November 2015
- New Hydraulic Steering System October 2015
- New Cutlass Bearings November 2015
- New Bottom Paint November 2015
- Propellers Scanned and Balanced November 2015
- Propspeed Applied to Running Gear November 2015

Basic Information

Category: Cruiser

Sub Category: Express

Model Year: 2000

Year Built: 2000

Country: United States

Dimensions

LOA: 58' 0" (17.68m)

Beam: 15' 9" (4.80m)

Max Draft: 4' 1" (1.24m)

Speed, Capacities and Weight

Displacement: 48000 Pounds

Water Capacity: 200 Gallons

Holding Tank: 68 Gallons

Fuel Capacity: 700 Gallons

Accommodations

Total Cabins: 2

Total Berths: 6

Total Heads: 2

Hull and Deck Information

Hull Material: Fiberglass

Engine Information

Engines: 2

Manufacturer: Caterpillar

Model: 3406E

Engine Type: Inboard

Fuel Type: Diesel

DETAILED INFORMATION

May 2015 Service

Main Engines: Oil change on both main engines, changed oil filters primary fuel filters, secondary fuel filters, engine zinc anodes, Checked belt tension, performed valve adjustment on both main engines. Removed stbd. Raw water pump and cleaned gasket material from mounting surface and reinstalled with new gasket, orings and oil supply line. Removed port raw water pump and rebuilt using new seals and impeller, then reinstalled with new gaskets and orings. Removed aftercoolers from both engines, Ordered new aftercooler cores and installed, Replaced stbd main engine 8D batteries. Drained and flushed engine coolant in both main engines.

Generators: Performed oil change on generators, oil filter, primary fuel filters, secondary fuel filters, zinc, checked raw water impeller. Tightened belts on both generators. Changed out stbd generator fuel pump.

Maintenance: Replaced bilge pump in aft Compartment. Replaced shower sump bilge pump and float switch. Installed new stereo amplifier. Installed new actuator for cockpit seat. Resealed garage hatch hydraulic cylinder .

Steering: Installed new steering cylinder, bleed air from steering system and topped off with fluid.

Manufacturer Provided Description

The Sea Ray 580 Super Sun Sport has a stately cockpit that offers a world of comfort and relaxation for everyone on board. With a spacious U-shaped sofa (enhanced by an electric sunpad), a wet bar, the 580 Super Sun Sport has every element in place for flawless entertaining in any weather thanks to the sport spoiler, and full enclosure.

Storage space is plentiful, too. In fact, the 580 Super Sun Sport has a stowaway garage for your tender.

Atop the garage is a large sunpad with molded fiberglass steps on either side that lead to an oversized swim platform. At the helm of the Sea Ray 580 Super Sun Sport, the captain mans an expansive control console for commanding the twin 776 horsepower Caterpillar engines with dual hydraulic gear shift and throttle controls, plus hydraulic power steering.

The battery switches and breakers are also accessible in the cockpit. Below deck, cabin accommodations on the 580 Super Sun Sport make even the most discriminating traveler feel right at home with the finest fabrics and high-gloss wood trim.

The master stateroom offers opulent surroundings with a queen-size bed with innerspring mattress and storage below, plus a private head area featuring Corian countertops and a cultured marble floor. The stateroom is the perfect private place to relax and enjoy the TV and Bose

Acoustimass three-speaker system, remotely controlled.

Guests have their own private, comfortable sleeping quarters in the forward stateroom, where a full-size bed, plenty of storage space and a nearby guest head with dual-entry doors await. These quarters also have the a television.

An Ultraleather sofa runs the length of the salon and includes an electrically operated slide-out bed for extra sleeping space when needed. A high-low wood dining table seats four and there's extra room at the breakfast bar with Corian countertops, and secure storage space for bottles and utensils.

Even the galley offers home-style comforts with a three-burner flush-mounted cooktop, microwave - convection oven, plus a refrigerator and freezer conveniently located under the counter.

An air conditioning system with integral grills, along with a standard washer and dryer combination complete the luxurious cabin setting. Technical systems on the Sea Ray 580 Super Sun Sport supply unmatched reliability on the open water.

Exclusions

Owner's personal belongings.

Disclaimer

The Company offers the details of this vessel or yacht in good faith but cannot guarantee or warrant the accuracy of this information nor warrant the condition of the vessel. A buyer should instruct his representatives, agents, or his surveyors, to investigate such details as the buyer desires validated. This vessel or yacht is offered subject to prior sale, price change, or withdrawal without notice.

PHOTOS









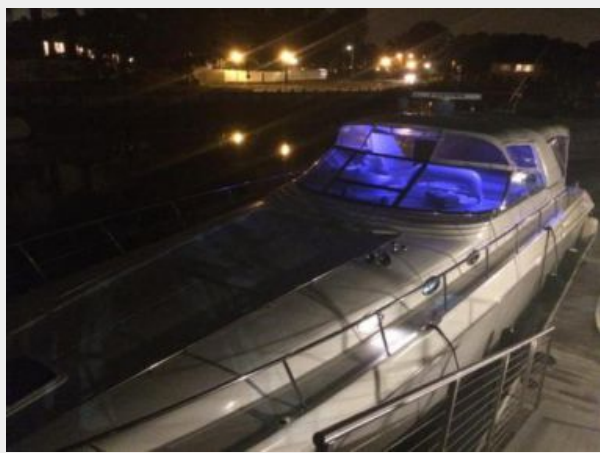






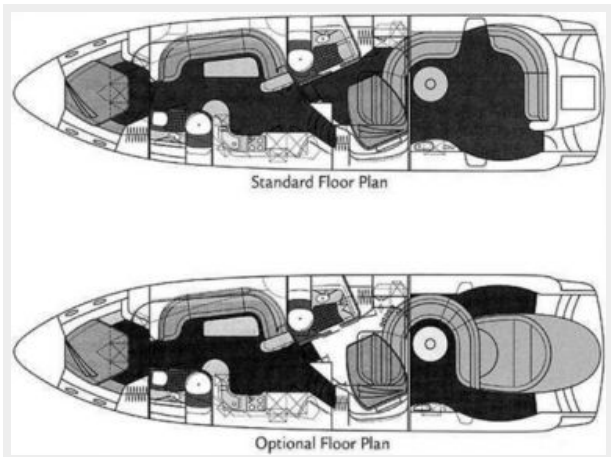








Vessel Layout



CONTACTS

Andrey Shestakov, leading yacht broker of the sales department of Shestakov Yacht Sales Inc. Shestakov Yacht Sales Inc., the official representative of the Miami/Fort Lauderdale FL headquarters.

Contact details

Email: andrey@shestakovyachtsales.com

Web: shestakovyachtsales.com/en/

Telephones

USA: +1(954)274-4435

Office hours

Monday – Saturday: **9:00 - 21:00** EDT

Sunday: **closed**

Address



Harbour Towne Marina, 850 NE 3rd St,
STE 213, Dania, FL 33004