

PRICELESS — SEA RAY



Builder: SEA RAY

Year Built: 2004

Model: Cruiser

Price: PRICE ON APPLICATION

Location: United States

LOA: 39' 0" (11.89m)

Beam: 14' 3" (4.34m)

Max Draft: 3' 0" (0.91m)

Our experienced yacht broker, Andrey Shestakov, will help you choose and buy a yacht that best suits your needs **Priceless — SEA RAY** from our catalogue. Presently, at Shestakov Yacht Sales Inc., we have a wide variety of yachts available on our sale's list. We also work in close contact with all the big yacht manufacturers from all over the world.

If you would like to buy a yacht **Priceless — SEA RAY** or would like help answering any questions concerning purchasing, selling or chartering a yacht, please call **+1(954)274-4435**

TABLE OF CONTENTS

TABLE OF CONTENTS	2
SPECIFICATIONS	3
Overview	3
Basic Information	3
Dimensions	3
Speed, Capacities and Weight	3
Hull and Deck Information	3
Engine Information	3
DETAILED INFORMATION	4
Salon	4
Galley	4
Forward Companionway	4
Aft Master Stateroom	5
Aft Deck	5
Mechanical	5
Disclaimer	6
Exclusions	6
Disclaimer	6
PHOTOS	7
CONTACTS	15
Contact details	15
Telephones	15
Office hours	15
Address	15

SPECIFICATIONS

Overview

"**PRICELESS**" is a fine example of a New to Market 390 Sea Ray Motor Yacht. Space abounds in this well thought out Sea Ray model. Bright, airy and user friendly can be used to describe the 390MY. This low hour vessel is fully equipped with factory options to include a Raytheon electronics package. Centrally located in eastern NC '**PRICELESS**' is available for your inspection and consideration. Owners change in plans brings her freshly to market. '**PRICELESS**' will be the next 390 Sea Ray MY to be sold.

Basic Information

Category: Cruiser

Model Year: 2004

Year Built: 2004

Country: United States

Dimensions

LOA: 39' 0" (11.89m)

Beam: 14' 3" (4.34m)

Max Draft: 3' 0" (0.91m)

Speed, Capacities and Weight

Fuel Capacity: 300 Gallons

Hull and Deck Information

Hull Material: Fiberglass

Engine Information

Engines: 2

Manufacturer: Cummins

Engine Type: Inboard

Fuel Type: Diesel

DETAILED INFORMATION

Salon

- Forward viewing window
- Ample storage
- Cabin windows
- Twin settees port and starboard
- Cherry wood with hi gloss finish
- Entertainment center
- LED TV
- Clarion Stereo
- DVD player
- Salon high gloss cocktail table with 2 seats
- Over head cherry tray ceiling with lighting
- Carpeting with carpet runner throughout
- Soft shades
- Toss pillows
- AC with reverse cycle heat

Galley

- Mid level
- Norcold refrigerator freezer
- Vinyl wood flooring
- Solid surface counter tops
- Built-in coffee maker
- Recessed cook top
- Under mount sink
- Microwave
- Washer/dryer
- Central vac
- Ample dish and provision storage

Forward Companionway

- Day head to port with access to both bow stateroom and companion way
- Enclosed head with shower
- Cherry vanity
- Bow v-berths
- TV

- Overhead hatch
- Carpeting
- Hanging locker

Aft Master Stateroom

- Large tapered queen berth
- Private shower
- Sink and vanity
- Enclosed head
- Aft window
- Hanging locker
- TV
- Storage locker

Aft Deck

- Factory hard top
- Port and star side entry doors
- Aft deck wet bar
- Wet bar ice maker
- AC with reverse cycle heat
- Riding seat with storage
- Aft bench seat with storage
- 3 side enclosure
- Twin helm seat
- Tilt steering wheel
- Raytheon RL80C GPS plotter
- Raytheon Radar with 3.5' open antenna
- Raytheon VHR with remote speaker
- ACR R-100 remote spotlight
- Trim table
- Navigator systems monitor
- Raytheon autopilot
- Voyager screen for aft camera
- Full instrumentation
- 2 windshield wipers
- Helm AC
- 12 V outlets

Mechanical

- Twin Cummins 460 hp engines
- Approx 300 hrs
- Onan generator
- Shore power and converter
- Hot water heater
- Freshwater system
- Dripless shaft seals
- Retractable shore power cord 50Amp
- Transom shower
- Swim platform
- Bow pulpit with windlass, anchor and line
- Full length port and starboard SS bow rails
- Vetus bow thruster

Disclaimer

While we attempt to display current and accurate data, this listing may not reflect the most recent transactions or may contain occasional data entry errors. Selling agent makes no warranties, express or implied, regarding the content or availability of the products described herein. All inventory listed is subject to availability and prior sale. Please consult selling agent for details. Prices are quoted for the USA only and may not include transportation, taxes, or other applicable charges. Photographs may be representative only and may vary somewhat from the actual items offered for sale. We will not be responsible for inaccurate data obtained from our site. Please check with your local dealer to ensure that you have the latest information available. Information on this web site could include technical inaccuracies or typographical errors. Changes may be periodically made to the information or the products herein. Questions or comments regarding these policies may be directed to website hosting agent.

Exclusions

Owner's personal belongings.

Disclaimer

The Company offers the details of this vessel or yacht in good faith but cannot guarantee or warrant the accuracy of this information nor warrant the condition of the vessel. A buyer should instruct his representatives, agents, or his surveyors, to investigate such details as the buyer desires validated. This vessel or yacht is offered subject to prior sale, price change, or withdrawal without notice.

PHOTOS

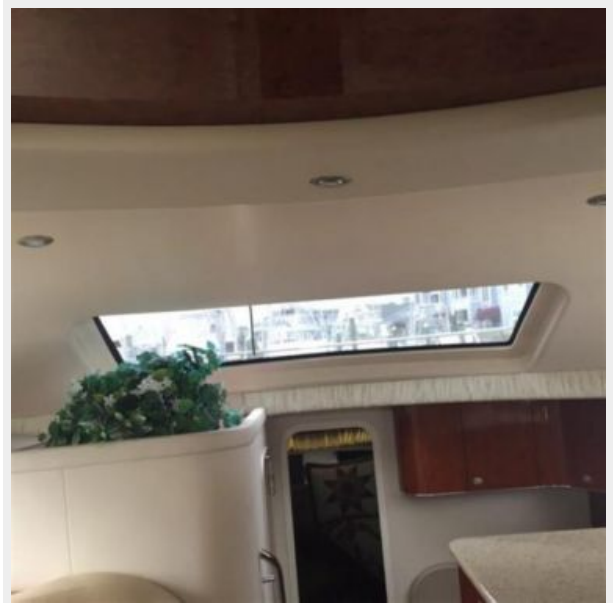
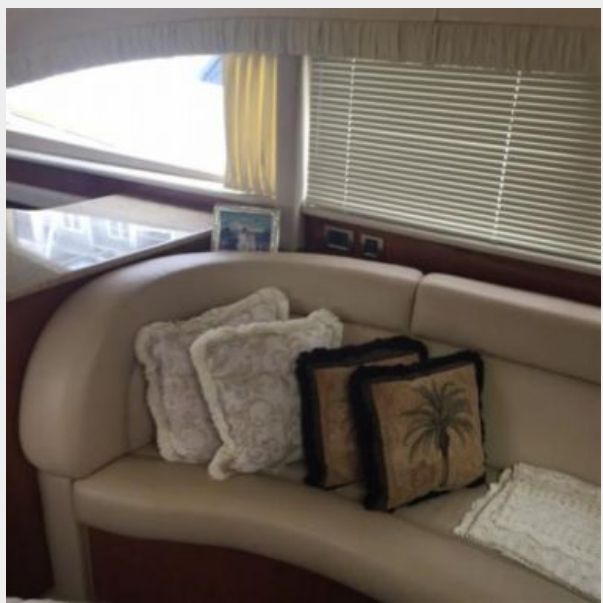


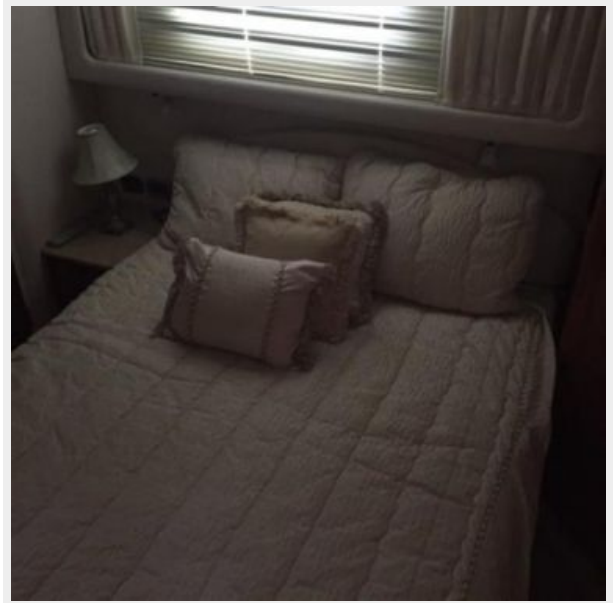


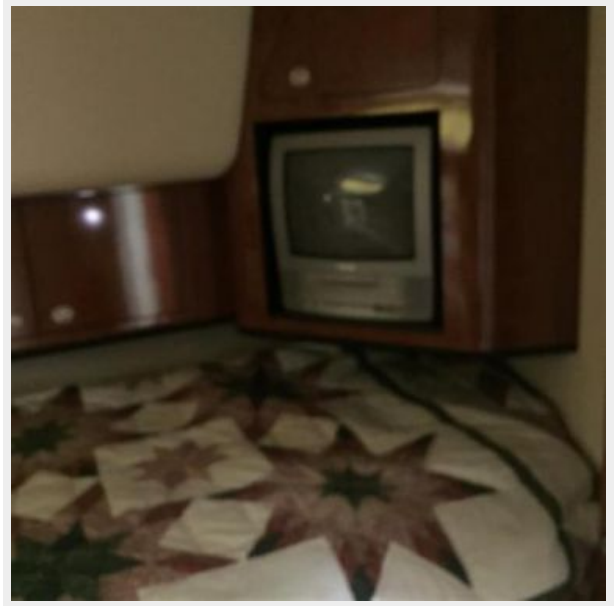












CONTACTS

Andrey Shestakov, leading yacht broker of the sales department of Shestakov Yacht Sales Inc. Shestakov Yacht Sales Inc., the official representative of the Miami/Fort Lauderdale FL headquarters.

Contact details

Email: andrey@shestakovyachtsales.com

Web: shestakovyachtsales.com/en/

Telephones

USA: +1(954)274-4435

Office hours

Monday – Saturday: **9:00 - 21:00** EDT

Sunday: **closed**

Address



Harbour Towne Marina, 850 NE 3rd St,
STE 213, Dania, FL 33004