

## INDIAN SUMMER — BENETEAU



**Builder:** BENETEAU

**Year Built:** 1983

**Model:** Cruising Sailboat

**Price:** PRICE ON APPLICATION

**Location:** United States

**LOA:** 42' 0" (12.80m)

**Beam:** 13' 0" (3.96m)

**Min Draft:** 7' 2" (2.18m)

Our experienced yacht broker, Andrey Shestakov, will help you choose and buy a yacht that best suits your needs **Indian Summer — BENETEAU** from our catalogue. Presently, at Shestakov Yacht Sales Inc., we have a wide variety of yachts available on our sale's list. We also work in close contact with all the big yacht manufacturers from all over the world.

If you would like to buy a yacht **Indian Summer — BENETEAU** or would like help answering any questions concerning purchasing, selling or chartering a yacht, please call **+1(954)274-4435**

---

# TABLE OF CONTENTS

---

TABLE OF CONTENTS	2
SPECIFICATIONS	3
Overview	3
Basic Information	6
Dimensions	6
Speed, Capacities and Weight	7
Accommodations	7
Hull and Deck Information	7
Engine Information	7
PHOTOS	8
CONTACTS	12
Contact details	12
Telephones	12
Office hours	12
Address	12

# SPECIFICATIONS

## Overview

Indian Summer is a fast ocean racing boat ready for cruising at a modest price. It's fully equipped for cruising now.

- Monitor Wind Vane self steering - REFURBISHED 2007!
- Isotherm 12 vdc refrigerator - NEW 2007!
- Eno 2 burner stove with oven - NEW 2010!
- Muir 12 volt vertical windlass - NEW 2014!
- All sails - NEW 2007!
- Vetus 42 hp diesel engine - NEW 2007!
- Dell laptop with Nobeltec Trident electronic charts: Alaska to Panama, Columbia, Caribbean and US east coast - NEW 2014!
- Boat Name Indian Summer Specs Builder: Beneteau France Designer: Germann Frers Flag of Registry: United States Keel: Fin Hull Shape: Monohull Dimensions LOA: 43 ft 8 in Beam: 13 ft 0 in LWL: 36 ft 5 in Length on Deck: 42 ft 0 in Minimum Draft: 7 ft 2 in Displacement: 18600 lbs Dry Load Ballast: 9000 lbs Bridge Clearance: 60 ft 0 in Headroom: 6 ft 6 in Engines Engine 1: Engine Brand: Vetus Year Built: 2007 Engine Type: Inboard Engine/Fuel Type: Diesel Propeller: Folding propeller Drive Type: Direct Drive Engine Power: 42 HP Tanks Fresh Water Tanks: 2 Plastic (33 Gallons) Fuel Tanks: 2 Stainless steel (40 Gallons) Holding Tanks: 2 Accommodations Number of single berths: 4 Number of double berths: 2 Number of cabins: 2 Number of heads: 2 Electronics Depthsounder Autopilot Compass Wind speed and direction GPS VHF Computer Repeater(s) Radio Navigation center Radar Plotter Log-speedometer Sails Trisail Fully battened mainsail Furling genoa Storm jib Asymmetric spinnaker Rigging Spinnaker pole Steering wheel Inside Equipment Deep freezer Hot water Refrigerator Electric bilge pump Heating Battery charger Oven Manual bilge pump Marine head Fresh water maker Electrical Equipment Shore power inlet Inverter Electrical Circuit: 12V Outside Equipment/Extras Wind generator Outboard engine brackets Liferaft Radar reflector Swimming ladder Cockpit table Total Liferaft Capacity: 8 Electric windlass Covers Mainsail cover Bimini Top Cockpit cover Genoa cover Spray hood

### Accommodations

A few short steps lead down from the cockpit to the saloon. To starboard is a forward facing nav station. Just forward of the nav station is the starboard settee. Above the settee is a crew berth or shelf that could be used for storage. Opposite the starboard settee across the folding dining table is the port settee. Above the port settee is another crew berth. Aft of the port settee is a U-shaped galley. Aft of the galley is a private VIP stateroom. Just behind the nav station on the starboard side is the aft head.

Forward of the saloon is the entry to the owner's stateroom. Entry is a bit to starboard. To port, just aft of the owner's stateroom and forward of the saloon is the owner's head and shower.

- Owner's stateroom and VIP stateroom offer 2 double berths in privacy
- Saloon settees with square corners make comfortable seats to lean back, put your feet up and read or watch TV
- Saloon settees fitted with lee cloths make excellent sea berths
- Crew berths above the settees make great berths for a full crew or provide excellent storage
- Dining table with two drop leaves makes plenty of room in saloon when down and serves four very comfortably for dinner
- Fixed windows bring light into saloon
- Opening portlights bring light and ventilation into aft head and VIP stateroom
- Opening hatches bring light and ventilation into the saloon and owner's stateroom
- Dickinson Newport zero clearance diesel marine heater keeps the saloon warm in any weather
- PYI floor panel fasteners keep sole in place in rough conditions
- **Saloon cushions covered with Sunbrella fabric - NEW 2012!**
- **VIP stateroom cushions covered with Sunbrella fabric - NEW 2012!**

### Galley

- **Eno 2 burner propane stove with oven and broiler - NEW 2010!**
- **Isotherm refrigerator/freezer - NEW 2007 and recent upgraded components!**
- Double stainless steel galley sink
- 2 levels of storage above stove and refrigerator with sliding Lexan covers
- Ample storage
- Ample counter space

### Electronics

- **Dell laptop computer with Nobeltec Trident electronic charts: Alaska to Panama, Columbia, Caribbean Sea and US east coast - NEW 2014!**
- ICOM IC-M504 DSC VHF radio with loudhailer and fog signal functions mounted at nav station
- ICOM IC-M802 SSB radio
- ICOM AT-140 automatic tuner for SSB
- ICOM RAM remote mic for full function remote at the helm
- SCS PTC-Ilusb Pactor 3 modem for email offshore and anywhere
- **NKE autopilot with integrated gyrometer mounted at helm - NEW 2007!**
- **NKE depth sounder mounted above companionway - NEW2007!**
- **NKE knot meter and log mounted above companionway - NEW 2007!**
- **NKE GPS mounted above companionway - NEW 2007!**
- **NKE Gyropilot Graphic multifunction display mounted at nav station - NEW**

**2007!**

- **Furuno 16 mile CRT radar mounted at nav station - REFURBISHED 2010!**
- FURUNO GPS 32
- Garmin GPS 76
- Garmin GPS 60

**Sails & Rigging**

- **Full batten mainsail - NEW 2007!**
- **130% genoa - NEW 2007!**
- **90% genoa - NEW 2007!**
- **Trisail with orange safety visual - NEW 2007!**
- **Staysail - NEW 2007!**
- **Monitor wind vane self steering - REFURBISHED 2007!**
- Hydraulic backstay adjuster
- Asymmetrical spinnaker with pole
- Furler roller furler for genoa
- 2 oversized Lewmar 3 speed winches
- 7 Lewmar 2 speed winches
- 1 2 speed self tailing mainsail winch

**Electrical**

- **Lifeline 8D starting battery - NEW 2012!**
- **2Lifeline 6 volt house batteries - NEW 2012!**
- Magnum 2000 pure sine wave inverter/charger
- Fourwinds wind generator with ample spare parts
- Fourwinds in-water towing generator
- 110 VAC shore power
- 2 50' 30 amp shorepower cords

**Engine & Mechanical**

- **Vetus 42 hp 4 cylinder marine diesel engine - NEW 2007!**
- **Balmar 100 amp Custom mounted auxiliary alternator - NEW 2006!**
- **Stainless steel prop shaft - NEW 2007!**
- Max-Prop feathering 3 blade bronze prop
- Spectra 150 watermaker makes 6.3 gallons/hr. at 4.5 amps
- Spare membrane for watermaker
- Spare filters and element for watermaker
- Spare 50 amp and 100 amp alternators
- **Raritan 8 gallon engine/110 volt water heater - NEW 2012!**

**Deck & Hull**

- **Gelcoat hull and topsides - NEW 2014!**
- **Dodger and bimini with zippered inserts and side panels - NEW 2007!**
- **Oversized Muir vertical electric windlass - NEW 2014!**
- 30 kg Bruce anchor with 200' 5/16" HT chain and 300' 3/4" rope rode
- Fortress anchor with chain and rope rode

- 30 kg (66#) Danforth anchor
- 20 kg (44#) Danforth anchor
- Full boat awning protects the boat from sun and rain and cools the boat against hot sun
- Radar reflector
- MOB system
- 8 teal fenders matching hull stripe and canvas colors
- **Matching teal winch covers, teak handrail covers, mainsail cover, helm cover - NEW 2014!**
- 2 larger white fenders
- Viking 8 person life raft in deck mounted canister on foredeck

### Broker's Comments

**Indian Summer is a fast ocean racing boat ready for cruising at a modest price. It's fully equipped for cruising now.**

- **Monitor Wind Vane self steering - REFURBISHED 2007!**
- **Isotherm 12 vdc refrigerator - NEW 2007!**
- **Eno 2 burner stove with oven - NEW 2010!**
- **Muir 12 volt vertical windlass - NEW 2014!**
- **All sails - NEW 2007!**
- **Vetus 42 hp diesel engine - NEW 2007!**
- **Dell laptop with Nobeltec Trident electronic charts: Alaska to Panama, Columbia, Caribbean and US east coast - NEW 2014!**

### Basic Information

**Category:** Cruising Sailboat

**Model Year:** 1983

**Year Built:** 1983

**Country:** United States

### Dimensions

**LOA:** 42' 0" (12.80m)

**LWL:** 36' 5" (11.10m)

**Beam:** 13' 0" (3.96m)

**Min Draft:** 7' 2" (2.18m)

**Clearance:** 60' 0" (18.29m)

---

## Speed, Capacities and Weight

---

**Displacement:** 18600 Pounds

---

## Accommodations

---

**Total Cabins:** 2

---

## Hull and Deck Information

---

**Hull Material:** Fiberglass

---

## Engine Information

---

**Manufacturer:** vetus

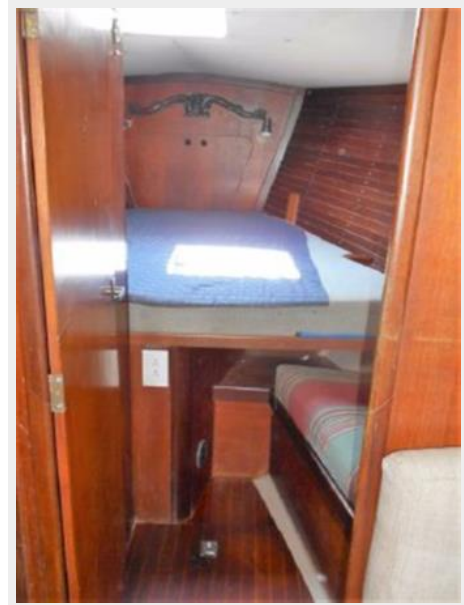
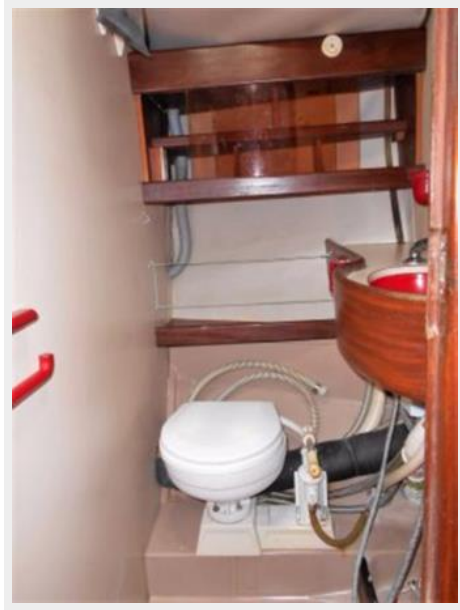
**Engine Type:** Inboard

**Fuel Type:** Diesel

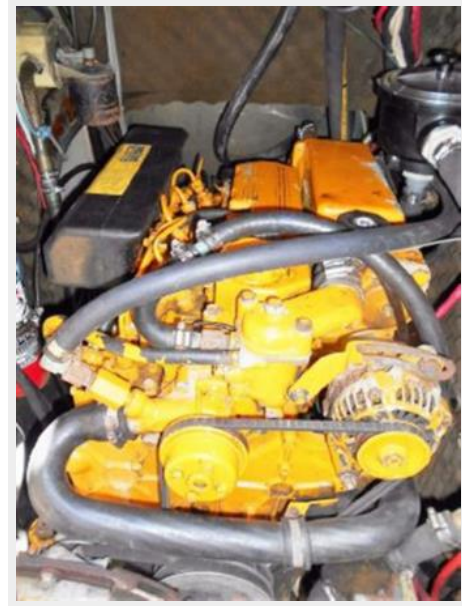
# PHOTOS











---

# CONTACTS

---

Andrey Shestakov, leading yacht broker of the sales department of Shestakov Yacht Sales Inc. Shestakov Yacht Sales Inc., the official representative of the Miami/Fort Lauderdale FL headquarters.

---

## Contact details

---

Email: [andrey@shestakovyachtsales.com](mailto:andrey@shestakovyachtsales.com)

Web: [shestakovyachtsales.com/en/](http://shestakovyachtsales.com/en/)

---

## Telephones

---

USA: +1(954)274-4435

---

## Office hours

---

Monday – Saturday: **9:00 - 21:00** EDT

Sunday: **closed**

---

## Address

---



Harbour Towne Marina, 850 NE 3rd St,  
STE 213, Dania, FL 33004