

## AZZURE — PRINCESS YACHTS



**Builder:** PRINCESS YACHTS

**Year Built:** 2008

**Model:** Cruising Yacht

**Price:** PRICE ON APPLICATION

**Location:** Australia

**LOA:** 62' (18.9mm)

**Beam:** 16.5

**Max Draft:** 4' 9" (1.45mm)

**Cruise Speed:** 25 Knots Kts. (29 MPH)

**Max Speed:** 32 Knots Kts. (37 MPH)

Our experienced yacht broker, Andrey Shestakov, will help you choose and buy a yacht that best suits your needs **AZZURE — PRINCESS YACHTS** from our catalogue. Presently, at Shestakov Yacht Sales Inc., we have a wide variety of yachts available on our sale's list. We also work in close contact with all the big yacht manufacturers from all over the world.

If you would like to buy a yacht **AZZURE — PRINCESS YACHTS** or would like help answering any questions concerning purchasing, selling or chartering a yacht, please call **+1(954)274-4435**

# TABLE OF CONTENTS

TABLE OF CONTENTS	2
SPECIFICATIONS	3
Overview	3
Basic Information	3
Dimensions	3
Speed, Capacities and Weight	3
Accommodations	3
Hull and Deck Information	3
Engine Information	4
PHOTOS	5
CONTACTS	8
Contact details	8
Telephones	8
Office hours	8
Address	8

# SPECIFICATIONS

## Overview

This Princess P62 Motor Yacht presents in immaculate condition and comes with a fully paid 18 month maintenance package. With low hour Cat C18 turbo diesel engines, dual helm, bow & stern thrusters, state of the art electronics, remote Yacht controller, docking station system. 4 beautifully appointed staterooms sleeps up to 8 + crew quarters. Full Navigation, full galley, washer/dryer, air conditioning, desalination, foxtel, premium Bose system. Classis cherry gloss interior wood finish, silver hull. Stunning fully optioned motor yacht. Inspection will not disappoint.

## Basic Information

**Category:** Cruising Yacht

**Model Year:** 2008

**Year Built:** 2008

**Country:** Australia

## Dimensions

**LOA:** 62' (18.9mm)

**Beam:** 16.5

**Max Draft:** 4' 9" (1.45mm)

## Speed, Capacities and Weight

**Cruise Speed:** 25 Knots Kts. (29 MPH)

**Max Speed:** 32 Knots Kts. (37 MPH)

**Fuel Capacity:** 900.56 Gal Gallons

## Accommodations

**Total Cabins:** 4

## Hull and Deck Information

**Hull Material:** GRP

## Engine Information

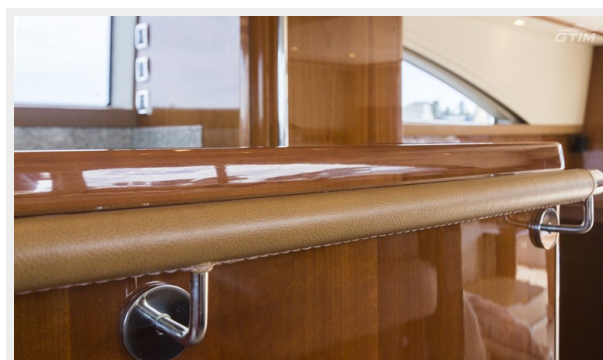
---

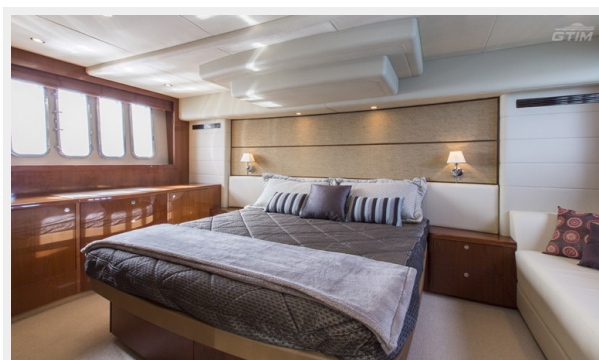
**Engines:** 2

**Manufacturer:** Caterpillar

**Fuel Type:** Diesel

# PHOTOS







# CONTACTS

---

Andrey Shestakov, leading yacht broker of the sales department of Shestakov Yacht Sales Inc. Shestakov Yacht Sales Inc., the official representative of the Miami/Fort Lauderdale FL headquarters.

## Contact details

---

Email: **andrey@shestakovyachtsales.com**

Web: [shestakovyachtsales.com/en/](http://shestakovyachtsales.com/en/)

## Telephones

---

USA: **+1(954)274-4435**

## Office hours

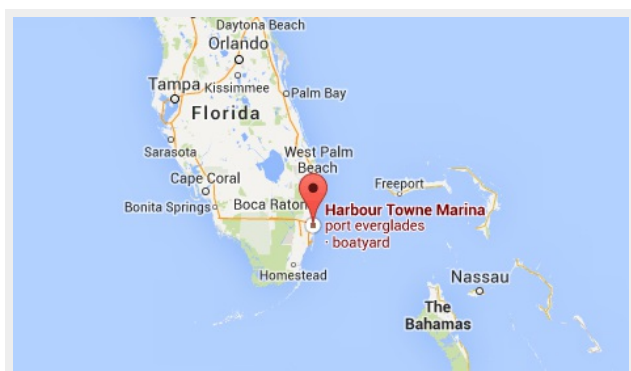
---

Monday – Saturday: **9:00 - 21:00 EDT**

Sunday: **closed**

## Address

---



Harbour Towne Marina, 850 NE 3rd St,  
STE 213, Dania, FL 33004