

## NO NAME — SUNSEEKER



**Builder:** [SUNSEEKER](#)

**Year Built:** 2007

**Model:** Motor Yacht

**Price:** PRICE ON APPLICATION

**Location:** United States

**LOA:** 60' 0" (18.29m)

**Beam:** 16' 5" (5.00m)

**Max Draft:** 4' 11" (1.50m)

**Cruise Speed:** 23 Kts. (26 MPH)

**Max Speed:** 30 Kts. (35 MPH)

Our experienced yacht broker, Andrey Shestakov, will help you choose and buy a yacht that best suits your needs **No Name — SUNSEEKER** from our catalogue. Presently, at Shestakov Yacht Sales Inc., we have a wide variety of yachts available on our sale's list. We also work in close contact with all the big yacht manufacturers from all over the world.

If you would like to buy a yacht **No Name — SUNSEEKER** or would like help answering any questions concerning purchasing, selling or chartering a yacht, please call **+1(954)274-4435**

---

# TABLE OF CONTENTS

---

TABLE OF CONTENTS	2
SPECIFICATIONS	4
Overview	4
Basic Information	4
Dimensions	4
Speed, Capacities and Weight	4
Accommodations	5
Hull and Deck Information	5
Engine Information	5
DETAILED INFORMATION	6
Features	6
Manufacturer Provided Description	6
Additional Description	6
Factory Installed Options	7
Principal Features	7
US specification includes	8
Exclusions	8
Disclaimer	8
PHOTOS	10
Starboard Profile	10
Profile	10
Profile	10
Profile	10
CONTACTS	18
Contact details	18
Telephones	18
Office hours	18
Address	18



---

# SPECIFICATIONS

---

## Overview

---

New to Market!!! Guaranteed the nicest 60' Sunseeker Manhattan on the market.

Duty Paid, Hull Sides Painted, New teak decks, Only 685 Hours on CAT C-15s, Teak and Holly flooring in Salon & Galley, and the list goes on.

She will not last at this price so call today to get aboard!

## Basic Information

---

**Category:** Motor Yacht

**Model Year:** 2007

**Year Built:** 2007

**Country:** United States

**Fly Bridge:** Yes

## Dimensions

---

**LOA:** 60' 0" (18.29m)

**LWL:** 48' 2" (14.68m)

**Beam:** 16' 5" (5.00m)

**Max Draft:** 4' 11" (1.50m)

## Speed, Capacities and Weight

---

**Cruise Speed:** 23 Kts. (26 MPH)

**Max Speed:** 30 Kts. (35 MPH)

**Displacement:** 68200 Pounds

**Water Capacity:** 185 Gallons

**Fuel Capacity:** 792 Gallons

---

## Accommodations

---

**Total Cabins:** 3

**Total Berths:** 4

**Total Heads:** 3

**Crew Cabin:** 1

**Crew Berths:** 2

**Crew Sleeps:** 2

**Crew Heads:** 1

---

## Hull and Deck Information

---

**Hull Material:** Fiberglass

---

## Engine Information

---

**Engines:** 2

**Manufacturer:** CAT

**Model:** C-15

**Engine Type:** Inboard

**Fuel Type:** Diesel

---

# DETAILED INFORMATION

---

## Features

---

### Electronics

- Depthsounder - Furuno Navnet 1944 C
- Autopilot - Simrad

### Inside Equipment

- Bow Thruster
- Electric Bilge Pump
- Microwave Oven
- Air Conditioning
- Hot Water
- Refrigerator
- Fresh Water Maker
- Battery Charger

### Electrical Equipment

- Shore Power Inlet
- Generator - Kohler 885 Hrs.

### Outside Equipment/Extras

- Teak Cockpit
- Cockpit Shower
- Liferaft
- Swimming Ladder

### Covers

- Bimini Top

---

## Manufacturer Provided Description

---

Charming and sophisticated, the Manhattan 60 impresses with its responsive performance, top speed of 30 knots and luxurious appointment throughout. Immaculate en suite accommodation for six even leaves room for an optional twin crew cabin, making this a versatile motoryacht.

---

## Additional Description

---

- Bimini top
- Twin berth crew cabin aft with separate toilet
- Hydraulic passerelle
- Air-conditioning
- Upgraded generator
- Washer/Dryer

---

## Factory Installed Options

---

- Traditional Blue Sunseeker Hull
- Bimini top in white canvas with stainless steel frame work
- Canvas package in Sunbrella material
- Furuno Navnet 1944C 10.4" Color LCD Radar/plotter (4ft open scanner) with GPS antenna GP320B on lower console & Navnet GD-1920-C 10.4" Color LCD plotter (radar repeater) on fly console inc.
- Simrad pilot fast heading capability junction box AC20
- ICOM M602 waterproof combined fixed DSC VHF dual station
- Full CCTV System throughout
- Ipod Station
- Full SAT systems
- Electric Gaganeau lava coal BBQ Grille
- Bose Lifestyle 48 DVD/CD Surround Sound system in lieu of std in lower saloon
- Electric cooling unit for cool box on flybridge
- Sharp Aquos 20" LCD TV in Aft Master
- Sharp Aquos 32" LCD TV on fall/rise system
- (4) Hi-power Underwater lights
- Watermaker HRO Seafari SFM 450-1 (1590l/DAY) including commercial prefilter, freshwater flush & oil/water separator
- Digital 2 brick safe
- Teak folding cockpit table on removable telescopic leg
- Bow cushions
- Crew cabin with A/C and custom flooring

---

## Principal Features

---

- Electric winch with bow roller, flybridge and cockpit controls
- Hot and cold swimming shower
- Sliding cockpit door to aft cockpit
- Flatscreen televisions in all cabins
- Radio/CD player
- DVD surround system in saloon
- Electric refrigerator
- Electric freezer

- Ceramic hob
- Microwave/Grill/Oven
- Radar/Plotter/GPS
- Autopilot
- Bow thruster
- Electric speedlog
- Depth sounder
- VHF radio dual station
- Trim tabs
- Hydraulic steering
- Hot and cold water system
- Automatic fire extinguishers
- Automatic bilge pumps
- Generator
- AC shorepower/battery charger
- Teak bathing platform and steps
- Teak cockpit floor
- Fresh-water marina connection
- Vacuum toilets with holding tank
- Remote spotlight
- Demisters
- Side opening helm door
- Antifouling
- Hydraulic lifting platform

---

## US specification includes

---

- Air conditioning
- Upgraded generator
- US Coast Guard build regulations
- US specification appliances

---

## Exclusions

---

Owner's personal belongings.

---

## Disclaimer

---

The Company offers the details of this vessel or yacht in good faith but cannot guarantee or warrant the accuracy of this information nor warrant the condition of the vessel. A buyer should instruct his representatives, agents, or his surveyors, to investigate such details as the buyer desires validated. This vessel or yacht is offered subject to prior sale, price change, or withdrawal



without notice.

# PHOTOS

**Starboard Profile**



**Profile**



**Profile**



**Profile**

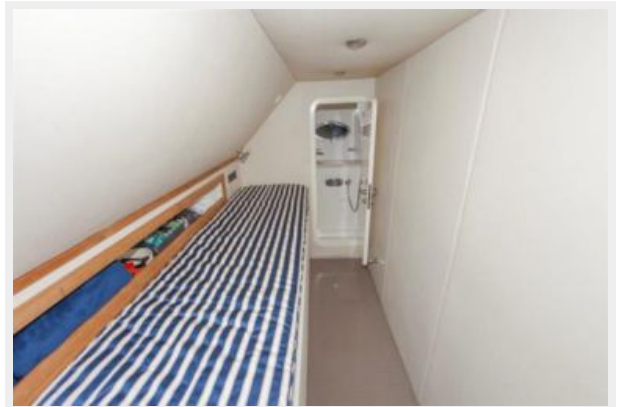


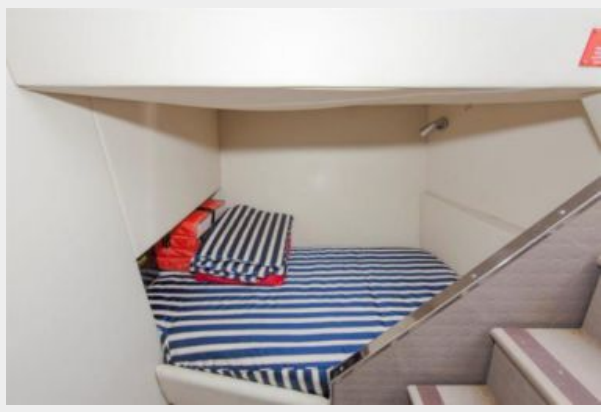
















# CONTACTS

---

Andrey Shestakov, leading yacht broker of the sales department of Shestakov Yacht Sales Inc. Shestakov Yacht Sales Inc., the official representative of the Miami/Fort Lauderdale FL headquarters.

## Contact details

---

Email: [andrey@shestakovyachtsales.com](mailto:andrey@shestakovyachtsales.com)

Web: [shestakovyachtsales.com/en/](http://shestakovyachtsales.com/en/)

## Telephones

---

USA: +1(954)274-4435

## Office hours

---

Monday – Saturday: **9:00 - 21:00** EDT

Sunday: **closed**

## Address

---



Harbour Towne Marina, 850 NE 3rd St,  
STE 213, Dania, FL 33004