

MIELE — BENETEAU



Builder: BENETEAU

Year Built: 2015

Model: Cruiser

Price: PRICE ON APPLICATION

Location: United States

LOA: 38' 0" (11.58m)

Beam: 12' 4" (3.76m)

Max Draft: 3' 5" (1.04m)

Cruise Speed: 28.676215986 Kts. (33 MPH)

Max Speed: 33.890073438 Kts. (39 MPH)

Our experienced yacht broker, Andrey Shestakov, will help you choose and buy a yacht that best suits your needs Miele — BENETEAU from our catalogue. Presently, at Shestakov Yacht Sales Inc., we have a wide variety of yachts available on our sale's list. We also work in close contact with all the big yacht manufacturers from all over the world.

If you would like to buy a yacht Miele — BENETEAU or would like help answering any questions concerning purchasing, selling or chartering a yacht, please call +1(954)274-4435

TABLE OF CONTENTS

TABLE OF CONTENTS	2
SPECIFICATIONS	3
Overview	3
Basic Information	3
Dimensions	3
Speed, Capacities and Weight	3
Accommodations	4
Hull and Deck Information	4
Engine Information	4
DETAILED INFORMATION	5
Broker Comments & Upgrades	5
Hull & Deck Features	5
Cockpit Features	6
Individual Options	6
Cabin Features	6
Electronics	7
Technical Features	8
Exclusions	9
Disclaimer	9
PHOTOS	10
CONTACTS	28
Contact details	28
Telephones	28
Office hours	28
Address	28

SPECIFICATIONS

Overview

The Beneteau 38 Gran Turismo is a sleek and efficient hardtop express cruiser. It stands apart from some of your other hardtop express cruisers with large round opening ports in her hull, along with large windows amidships and forward. A nice mix of traditional and modern elegance is evident in the luxurious cabin and staterooms. Her side decks are asymmetrical, giving her designers more leeway in creating the layout. Her helm is on the centerline allowing great visibility and the feeling of control. Equipped with Volvo Penta Joystick Docking the boat moves sideways with ease. You even have the extra control in tight quarters with the standard bow thruster. Options Highlight: 5kW Onan Diesel Generator, Cockpit AC, teak deck and platform. With Volvo Penta D4 300hp Diesel sterndrives you will cruise at 28 knots at 1.5 statute miles per gallon.

Basic Information

Category: Cruiser

Sub Category: Express

Model Year: 2015

Year Built: 2015

Country: United States

Dimensions

LOA: 38' 0" (11.58m)

Beam: 12' 4" (3.76m)

Max Draft: 3' 5" (1.04m)

Clearance: 13' 7" (4.14m)

Speed, Capacities and Weight

Cruise Speed: 28.676215986 Kts. (33 MPH) **Cruise Speed Range:** 239

Max Speed: 33.890073438 Kts. (39 MPH) **Displacement:** 16199 Pounds

Water Capacity: 53 Gallons

Holding Tank: 21 Gallons

Fuel Capacity: 172 Gallons

Accommodations

Total Cabins: 2

Hull and Deck Information

Hull Material: Fiberglass

Engine Information

Engines: 2

Manufacturer: Volvo Penta

Model: D4 Joystick

Engine Type: I/O

Fuel Type: Diesel

DETAILED INFORMATION

Broker Comments & Upgrades

- Volvo D4 300hp Joystick Sterndrive
- Service 05/2015
- Washed Bi-weekly

Hull & Deck Features

- Air Step Technology
- Bow & Stern Eyes, Stainless Steel
- Bow Rail, Stainless Steel w/Welded Stanchions
- Cleats, 10" ThruBolted – Stainless Steel (8)
- Deck Fill Plates, Stainless Steel
- Drain Plug, Brass-Threaded – Garboard (2)
- Gel Coat, Arctic White
- Graphics, Striping
- Handrails, Stainless Steel
- Light, Stern
- Lights, Navigation – Stainless Steel
- Rub Rail, PVC w/Stainless-Steel Insert
- Seating, Foldaway, Aft-facing – Transom
- Teak Swim Platform, Extended w/Concealed Stainless-Steel Swim Ladder
- Thru-Hull Fittings, Stainless Steel
- Toe Rail, Molded Fiberglass – Deck
- Vent System, Engine Room – Integral
- Windshield, Tempered/Bonded
- Windshield Wiper

Windlass System (Recessed):

- Anchor, Galvanized
- Anchor Chute, Stainless Steel
- Anchor Rope/Chain Storage w/Hatch
- Windlass, Rope/Chain w/Foot
- Switches

Certifications:

- Meets Applicable USCG & ABYC Standards NMMA Certification
- Volvo Penta Installation Quality Certification

Cockpit Features

- Door, Cabin Entry (Sliding, Lockable & Tinted)
- Door, Transom
- Floor Liner, Teak – Self-Bailing
- Hatch, Engine Room
- Lighting, Indirect
- Outlet, 12V Accessory
- Outlet, 120V GFI Protected
- Seating, Aft Bench w/Built-In Table Storage & Fiberglass Storage Base
- Seating, Bucket w/Swivel, Fiberglass Starboard of Helm
- Captain's Seat Double-wide
- Retractable Hardtop, Molded Fiberglass (Seamless) w/Overhead Lighting
- Steps, Boarding – Molded-In
- Storage, Side Panel – Helm
- Table, Cockpit – Solid Wood
- Wet Bar w/ sink

Individual Options

- White Bottom Paint
- 5kW Onan Diesel Generator (7 hours)
- Seat Covers
- Macerator w/Seacock Interlock System
- Refrigerator, Cockpit – Dual-Voltage (120V/12V)
- Spotlight, 5" Remote-Controlled
- Stereo Remote Control – Additional Unit on Transom
- Bow sunpad with adjustable back rest
- Cockpit AC, 6,000BTU

Cabin Features

- Carbon Monoxide Monitor
- Large Horizontal Mirror
- Light Wells
- Outlets, 120V GFI Protected
- Outlet, Phone
- Porthole opening in hull
- Sofa seatin for 4, convertible into sleeping berth
- Wooden Table, Alpi Mahogany
- Woodwork, Alpi Mahogany

Galley:

- Headroom 6'3"
- Stainless steel sink
- 2 Burner Ceramic electric cook top
- Cutlery storage
- Refrigerator
- Trash bin fitted in cupboard
- Microwave oven

V-Berth:

- Marine mattress (6'7"x5'7")
- Master Closet
- 2 Adjustable Reading Lights above berth
- 1 Opening hatch fitted with blind
- (2) Panoramic porthole on port and starboard

Mid-Stateroom:

- Marine mattress (6'7"x5'7")
- Master Closet
- (2) Adjustable Reading Lights above berth
- (2) Adjustable Reading Lights at entry
- (2) Opening hatch fitted with blind
- (2) Panoramic porthole on port and starboard

Head:

- Headroom: 6'7"
- Quiet flush marine toilet
- Shower curtain
- Rigid holding tank w/macerator
- Sink w/hot and cold
- Mirror and storage space
- Shower hose
- Automatic shower water drainage

Electronics

- Simrad NSS12 Chartplotter, Radar & Depth
- Simrad RS82 VHF
- Volvo Penta Joystick Control
- Volvo Penta EVC Displays

Technical Features

Control Station:

- Keyless Ignition
- 2 person pilot seat and 1 co-pilot seat with Bolster function
- Copilot handrail
- Instrument panel includes Simrad electronics
- Engine control gauges
- Compass, fuel gauge and rudder angle indicator
- Interior socket 12 V for mobile phone
- Rigid retractable hardtop
- Electric trip meter
- Built-in electric wiper

Electrical Systems:

- Battery Charger/Converter, 120V/60 Cycle
- Battery Switches, (3)
- Battery Trays w/Mounts
- Panel, Main Distribution – AC
- Shore Power, Dual 30 Amp/120V/60 Cycle w/50' Cords & Adapters
- TV/Phone Inlet w/TV Antenna & TV Shore Cord
- Wiring, Color-Coded w/Chafe Protection

Air Conditioning/Heating:

- (2) Reverse Cycle System (12,000 BTU)
- Custom Integral Vent System

Engine Room:

- Propulsion Stern Drive with Duo Prop
- Diesel version Volvo D4 300 (2 x 300 HP)
- Fuel filter with decanter
- Seawater filter
- Air intakes on the deck for engine compartment cooling
- Engine room soundproofed
- Fire extinguishing system activated from the steering station
- Stainless steel fuel filler
- 2 x 86 Gallon fuel tanks
- Hydraulic steering
- Electric engine controls

Fuel System:

- Fuel Lines, USCG – Type A-1
- Fuel Tanks, Aluminum w/Electric
- Shutoff Valves & Electric
- Sending Units

Water System:

- Freshwater Washdown Spigot
- Pressure Water System w/12V Pump
- Shower, Cockpit – Hot & Cold
- Water Heater, 120V (7-Gallon) w/Exchanger
- Water Inlet, Dockside
- Water Manifold System
- Water Tank (53-Gallon)

Waste Systems:

- Head System
- Holding Tank Level Indicator – MDP
- Holding Tank w/Dockside PumpOut (28-Gallon)
- Sump Box w/Pump – Automatic

Underwater Gear:

- Volvo Penta DuoProp – Diesel
- Trim Tabs, Hydraulic
- Bronze Props

Exclusions

Owner's personal belongings.

Disclaimer

The Company offers the details of this vessel or yacht in good faith but cannot guarantee or warrant the accuracy of this information nor warrant the condition of the vessel. A buyer should instruct his representatives, agents, or his surveyors, to investigate such details as the buyer desires validated. This vessel or yacht is offered subject to prior sale, price change, or withdrawal without notice.

PHOTOS

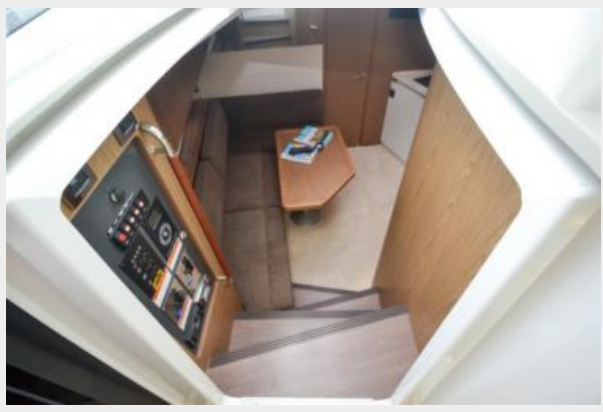




















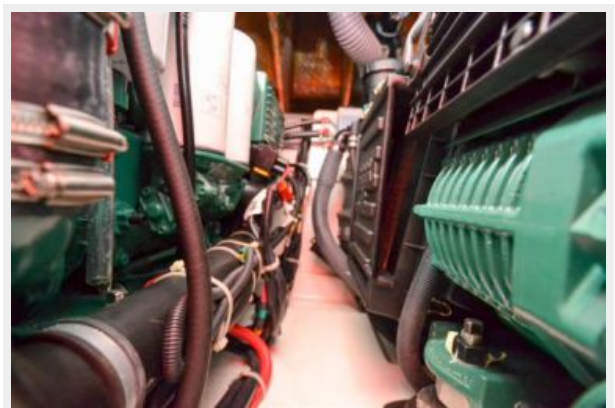
















CONTACTS

Andrey Shestakov, leading yacht broker of the sales department of Shestakov Yacht Sales Inc. Shestakov Yacht Sales Inc., the official representative of the Miami/Fort Lauderdale FL headquarters.

Contact details

Email: andrey@shestakovyachtsales.com

Web: shestakovyachtsales.com/en/

Telephones

USA: +1(954)274-4435

Office hours

Monday – Saturday: **9:00 - 21:00** EDT

Sunday: **closed**

Address



Harbour Towne Marina, 850 NE 3rd St,
STE 213, Dania, FL 33004