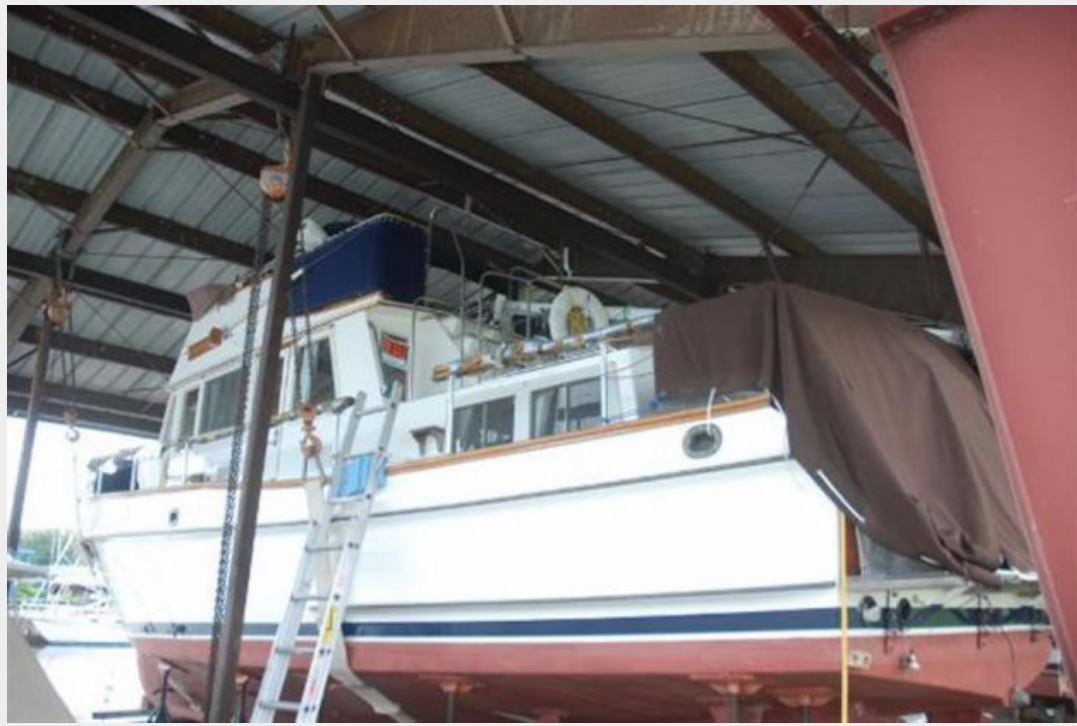


## 36FT 1986 GRAND BANKS 36 CLASSIC — GRAND BANKS



**Судостроитель:** GRAND BANKS

**Год постройки:** 1986

**Модель:** Моторная яхта

**Цена:** ЦЕНА ЯХТЫ ПО ЗАПРОСУ

**Местонахождение:** United States

**Длина общая:** 36' 0" (10.97m)

**Ширина:** 12' 8" (3.86m)

**Макс. осадка:** 4' 0" (1.22m)

**Крейс. скорость:** 10 Kts. (12 MPH)

Купить 36ft 1986 Grand Banks 36 Classic — GRAND BANKS а также выбрать подходящую вам яхту из нашего каталога яхт вам поможет опытный яхтенный брокер Андрей Шестаков. На сегодняшний день компания Shestakov Yacht Sales Inc. имеет большое количество яхт в собственном списке продаж, а также тесно сотрудничает со всеми крупными яхтенными производителями по всему миру.

Для того чтобы купить яхту 36ft 1986 Grand Banks 36 Classic — GRAND BANKS а также проконсультироваться по любому вопросу связанному с покупкой, продажей, чартером яхт позвоните по телефону **+7(918)465-66-44**.

# ОГЛАВЛЕНИЕ

---

ОГЛАВЛЕНИЕ	2
ХАРАКТЕРИСТИКИ	3
Обзор	3
Основная информация	3
Размеры	3
Скорость, вместимость и масса	3
Размещение	3
Корпус и палуба	3
Информация о двигателе	4
ПОДРОБНОЕ ОПИСАНИЕ	5
Manufacturer Provided Description	5
Engine Notes	6
Исключения	6
Отказ от ответственности	6
ФОТОГРАФИИ	7
КОНТАКТЫ	21
Контактная информация	21
Телефоны	21
Время работы	21
Адрес	21

# ХАРАКТЕРИСТИКИ

## Обзор

New to the market! Original owner. Fresh water and covered in a boat house during summer months her entire life.

## Основная информация

Тип судна: Моторная яхта

Модельный год: 1986

Год постройки: 1986

Страна: United States

## Размеры

Длина общая: 36' 0" (10.97m)

Ширина: 12' 8" (3.86m)

Макс. осадка: 4' 0" (1.22m)

Трапы: 13' 1" (3.99m)

Длина привального бруса: 36' 0"  
(10.97m)

## Скорость, вместимость и масса

Крейс. скорость: 10 Kts. (12 MPH)

Водоизмещение: 26000 Pounds

Вместимость воды: 140 Gallons

Объем топливного бака: 400 Gallons

## Размещение

Всего коек: 5

## Корпус и палуба

Материал корпуса: Fiberglass

## Информация о двигателе

---

**Двигатели:** 2

**Производитель:** Ford Lehman

**Тип двигателя:** Inboard

**Тип топлива:** Diesel

# ПОДРОБНОЕ ОПИСАНИЕ

## Manufacturer Provided Description

An all round seaworthy performer, the Grand Banks 36 Classic is capable of real deep water cruising. Long keel, 26,000 lb displacement, hard chine, and a deep forefoot hull provide stability and seaworthiness. The aft house superstructure incorporates a seat box which adds extra livable space inside the aft cabin. High bulwarks with sturdy teak handrails, the mastery of beautifully carved teak scrolls, stainless steel stanchions and grabrails on the house sides, anchor platform with anchor roller and bow pulpit, teak swim platform, transom boarding steps, wide side decks, port, starboard and stern boarding gates are some of the features standard on the Grand Banks 36. The flybridge offers a duplicate helmsman station with full instrumentation, venturi windscreen, and extra stowage beneath the console. An enclosed electronics locker next to the flybridge helm provides space to house essential electronics equipment. The long and wide flybridge has seating for six adults. Under the seats are teak slatted watertight stowage compartments. The fiberglass Grand Banks 36 is also luxurious. Teak joinery work by old-world hand craftsmen gives a practical beauty above and below decks. The cabin soles are teak parquet throughout. The main decks and flybridge are teak planked. Extensive locker and drawer space are made out of golden Burmese teak. The upholstery and drapes are selected to complement the warm look of the surrounding teak. The saloon is a spacious living area complete with solid teak yacht table, L-shaped settee, bar cabinet, and the helm station. Accessibility to the exterior and flybridge from the saloon is made easier with the presence of port and starboard saloon doors. Full instrumentation and the AC and DC panels are neatly recessed into the helm station. A full width teak console above the helm station provides space to house an array of electronics equipment. Three ply laminated safety glass windows all round provide full fore and aft visibility. The well equipped galley comes with hot and cold pressurized water system. The three-burner stove and oven, large stainless steel sink, dish locker and electric refrigerator are all conveniently located. The master stateroom aft has a double berth at starboard and a single berth at port with generous drawer space below. The adjoining toilet compartment is spacious and airy with full headroom. There is a separate shower stall with telephone-type shower, cultured marble counter top with built in sink, head, large mirror, and convenient storage space in the counter drawers and locker. The companionway in the aft stateroom leads to the aft deck. A neatly recessed stowaway teak ladder provides access to the aft deck via twin opening doors. The forward stateroom also has a large hanging locker and plenty of storage space. Its adjoining toilet compartment has full headroom, a large mirror, shower and cultured marble built in sink and sink counter top. Whether you are motoring around the bay or you're hundreds of miles at sea, quiet single or twin diesel engines are made quieter by the use of special engine room sound insulation. These smooth, heavy-duty engines provide long-range economical operation. GRAND BANK 36: Successor to the wooden 36 introduced in the 1960s, these boats enjoy the improvements and refinements of over 30 years. Known for seaworthiness and a comfortable ride, they are efficiently driven at 8.5 knots. Cruising at 12 knots is easily achieved with larger engines. Available in four deckhouse configurations, each with a number of interior layouts, the Classic features wide side decks, spacious lazarette, aft stateroom, and dinghy

storage. The Europa offers one-level living with a main saloon that opens to the deck and a protected cockpit. One or two staterooms are located forward. The Sedan's traditional, open cockpit is a favorite among cruisers who love to fish. For more spacious accommodations, the motoryacht features a large, full width aft stateroom with a walk-around bed, and an equally attractive forward stateroom with optional island bed. The GB36 is a living legend that has been refined to perfection.

## Engine Notes

---

Top speed of boat: 13.80888mph

## Исключения

---

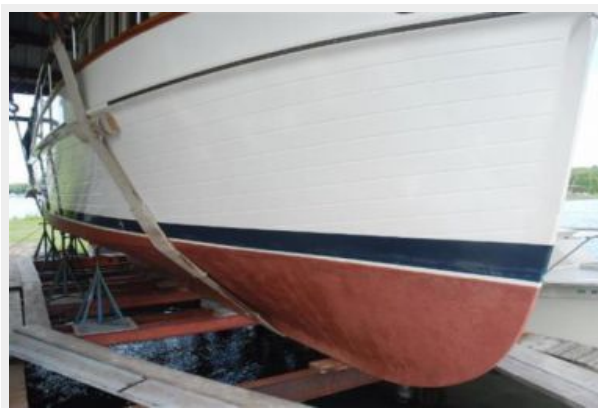
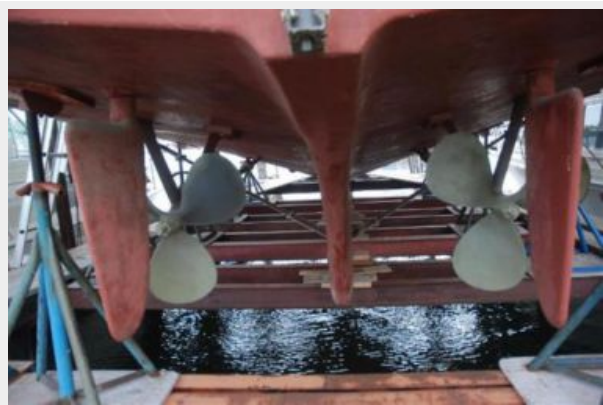
При продаже яхты исключаются личные вещи владельца.

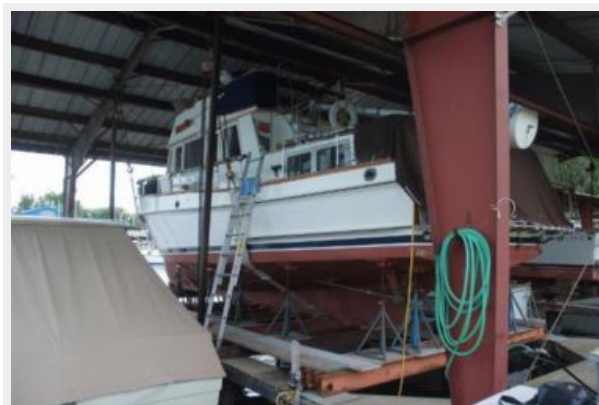
## Отказ от ответственности

---

Компания предоставляет описание судна или яхты добросовестно, но не может гарантировать точность этой информации, а также не ручается за техническое состояние. Покупатель должен проинструктировать своих агентов или оценщиков исследовать представленную информацию более подробно, по собственному желанию. Продажа судна или яхты, изменение цены или снятие с продажи будет происходить без предварительного уведомления.

# ФОТОГРАФИИ





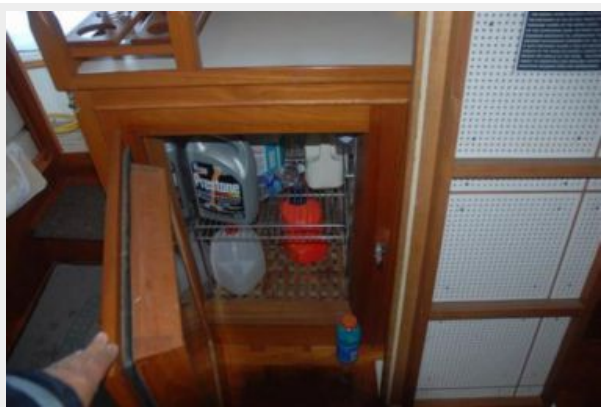
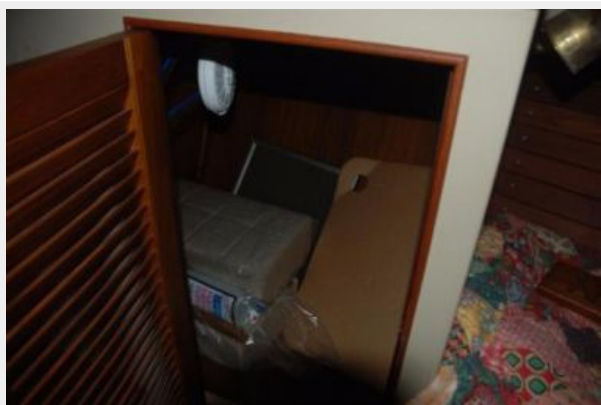
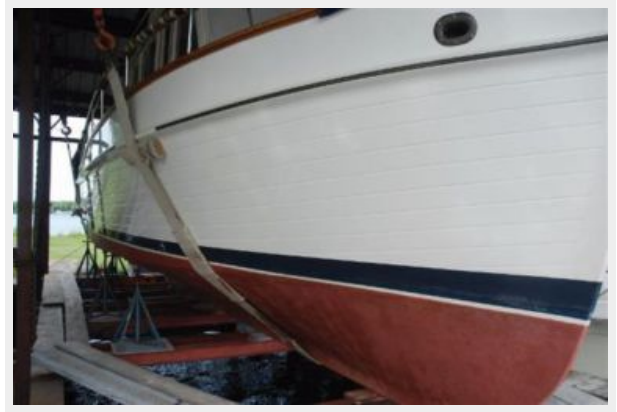


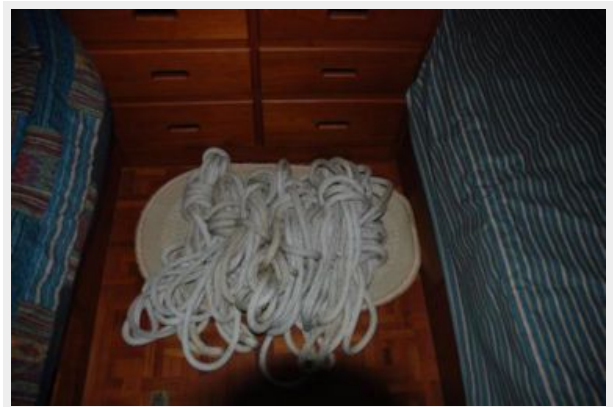


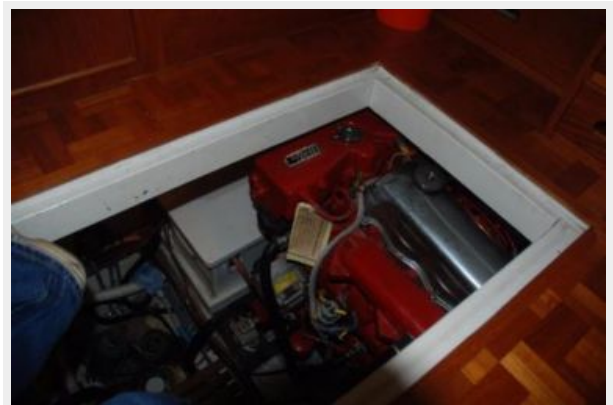
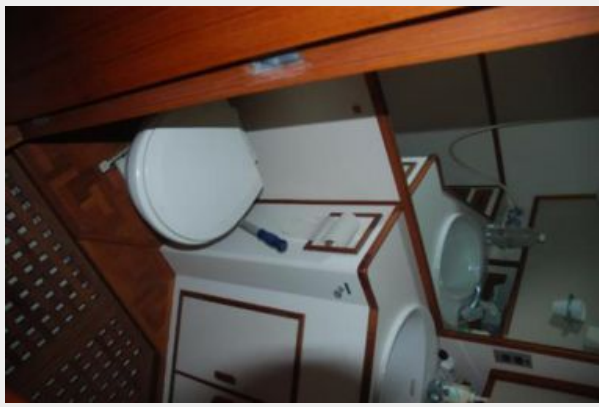


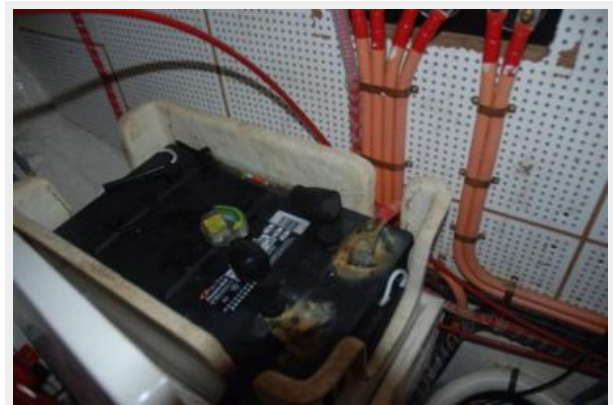
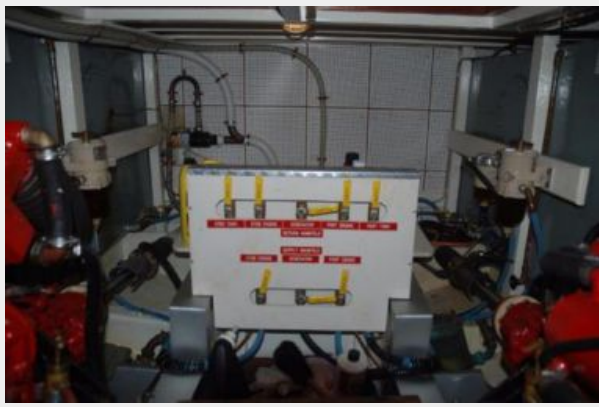




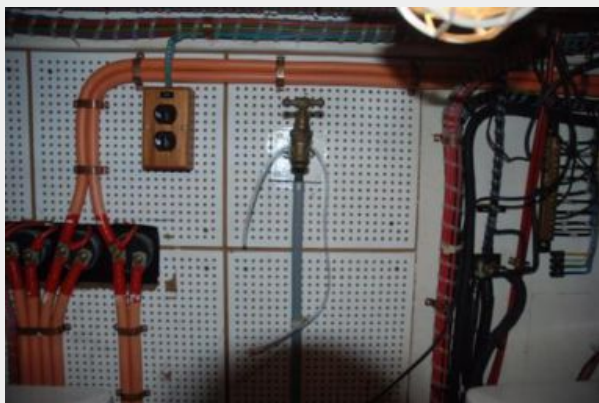


















# КОНТАКТЫ

---

Андрей Шестаков (Andrey Shestakov) – ведущий яхтенный брокер отдела продаж яхт и судов компании Shestakov Yacht Sales Inc. Официальный представитель Shestakov Yacht Sales Inc. для русскоговорящих клиентов в центральном офисе компании в Майами/Форт Лодердейл/Флорида/США.

## Контактная информация

---

Email: [andrey@shestakovyachtsales.com](mailto:andrey@shestakovyachtsales.com)

Web: [shestakovyachtsales.com](http://shestakovyachtsales.com)

## Телефоны

---

Краснодарский край: **+7(918)465-66-44**

США, Майами, Флорида: **+1(954)274-4435**

## Время работы

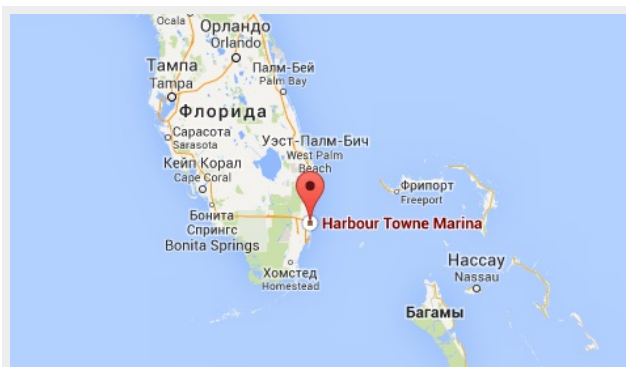
---

Понедельник – Суббота: **9:00 - 21:00**  
EDT

Воскресенье: **Закрето**

## Адрес

---



Harbour Towne Marina, 850 NE 3rd St,  
STE 213, Dania, FL 33004