

## AVANTI — LEGACY YACHTS



**Builder:** LEGACY YACHTS

**Year Built:** 2008

**Model:** Cruiser

**Price:** PRICE ON APPLICATION

**Location:** United States

**LOA:** 32' 0" (9.75m)

**Beam:** 12' 0" (3.66m)

**Max Draft:** 3' 10" (1.17m)

**Cruise Speed:** 19 Kts. (22 MPH)

**Max Speed:** 25 Kts. (29 MPH)

Our experienced yacht broker, Andrey Shestakov, will help you choose and buy a yacht that best suits your needs **Avanti — LEGACY YACHTS** from our catalogue. Presently, at Shestakov Yacht Sales Inc., we have a wide variety of yachts available on our sale's list. We also work in close contact with all the big yacht manufacturers from all over the world.

If you would like to buy a yacht **Avanti — LEGACY YACHTS** or would like help answering any questions concerning purchasing, selling or chartering a yacht, please call **+1(954)274-4435**

---

# TABLE OF CONTENTS

---

TABLE OF CONTENTS	2
SPECIFICATIONS	3
Basic Information	3
Dimensions	3
Speed, Capacities and Weight	3
Accommodations	3
Hull and Deck Information	3
Engine Information	3
DETAILED INFORMATION	4
Vessel Information	4
Exclusions	14
Disclaimer	14
PHOTOS	15
CONTACTS	21
Contact details	21
Telephones	21
Office hours	21
Address	21

---

# SPECIFICATIONS

---

## Basic Information

---

**Category:** Cruiser

**Model Year:** 2009

**Year Built:** 2008

**Country:** United States

## Dimensions

---

**LOA:** 32' 0" (9.75m)

**Beam:** 12' 0" (3.66m)

**Max Draft:** 3' 10" (1.17m)

## Speed, Capacities and Weight

---

**Cruise Speed:** 19 Kts. (22 MPH)

**Max Speed:** 25 Kts. (29 MPH)

**Water Capacity:** 68 Gallons

**Holding Tank:** 30 Gallons

**Fuel Capacity:** 200 Gallons

## Accommodations

---

**Total Cabins:** 1

## Hull and Deck Information

---

**Hull Material:** Fiberglass

## Engine Information

---

**Engines:** 1

**Manufacturer:** Cummins

**Model:** CRM

**Fuel Type:** Diesel

---

# DETAILED INFORMATION

---

## Vessel Information

---

Beautiful 32 Legacy with very low hours. Recent service with all new batteries. Bow and Stern thrusters. Loaded with electronics. A must see near Miami Beach. Ready for cruising the islands!

LEGACY YACHTS OFFERS MORE STANDARD FEATURES THAN ANY OTHER BOAT IN ITS CLASS!

- Hardtop over helm deck
- Bow thruster with joystick control and stern thruster
- Onan 5kw QD "Quiet Generator" w/ sound shield – 33 hours
- 110v Inverter - 2500 watt
- Master Volt monitoring panel
- Flat screen TV with built-in DVD
- Alpine stereo with CD player, 4 speakers, MP3, Satellite radio ready
- SmartCraft Computer Integration System
- Teak decking on helm deck
- Teak seat and grate in shower stall
- Teak swim platform with ladder
- Teak trim aft and outboard of bridge deck settees
- Teak and holly sole in cabin
- Cherry wood interior
- Electric anchor windlass with helm and bow controls
- Polished stainless steel anchor
- Dual anchor well on foredeck
- Transom seating including cushions
- Second table base socket at transom seating
- Hot and cold cockpit shower
- Diamond plate flooring in engine room
- Glendinning electronic engine shift/throttle control
- (2) Overhead hatches on bridge deck with Ocean Air Skyscreens
- Searchlight with twin beam and remote
- Chart top forward of navigator's seat
- Hull side storage lockers in master cabin
- Insulated drop-in cooler box at galley counter
- PSS dripless shaft seals
- CNC machined Nibral propeller
- Sea chest raw water inlet to minimize through-hull valves
- Underwater exhaust system for engine and generator
- Automatic fire suppression system
- Bottom paint with epoxy barrier coat

- All engineering in accordance with NMMA / ABYC rules
- Corian counter tops
- Lots of boat in just 32 feet!
- Easier Fit for Slips & Moorings
- Exquisite Craftsmanship & Finish
- Great Diesel Fuel Economy

## ELECTRONICS

- Raymarine C120 with radar
- Ray Autopilot ST8002
- Ray speedo ST60
- Ray depth ST60
- Mercury Vessel View

## CONSTRUCTION AND CERTIFICATIONS

### HULL AND DECK CONSTRUCTION

The hull is constructed using Legacy's Durahull technology. The deck, hull and all structural components are infused Vinylester construction. The centerline and leading edge of the keel are reinforced with Kevlar for impact resistance. All thru hull penetrations are designed to isolate the core materials from water penetration. Hull and deck are cored with Corecell. Gelcoat is an ISO-NPG type. Underwater exhaust and thruster tubes are molded into the hull.

Stringers are formed by a longitudinal and transverse molded framing grid constructed of FRP with reinforced engine area fully bonded to the hull. Three infused and cored composite structural bulkheads are bonded to the hull to form four compartments; the forepeak, main cabin, engine room and lazarette. The structural components are fully bonded together to create a uni-body boat construction. All engineering is done in accordance with NMMA using ABYC rules for small offshore vessels.

The bilges are finished in molded white gelcoat for easy maintenance. Limber holes are installed throughout the stringer system to allow for drainage of all compartments with the exception of the engine sump. This area is sealed to isolate the machinery fluids from the bilge system.

## STANDARD EQUIPMENT SPECIFICATIONS

### MECHANICAL SPECIFICATIONS

### GENERAL

Both raw water intake hoses are double clamped with stainless steel hose clamps. Ball valve-style seacocks are made of solid bronze. All thru-hull fittings are double clamped with stainless steel hose clamps and are fabricated from stainless steel above the water line and bronze below the waterline. This vessel is constructed to meet or exceed the standards set out by ABYC and NMMA.

## ENGINE ROOM

The engine room walls and overhead surfaces are completely sound insulated. Cavities and wireways are foam filled after installation to prevent noise passage. Hatches are gasket sealed and latched to provide sound insulation. All machinery is vibration dampened to reduce noise. There is a seat / step on pedestal base for ease of access.

## ENGINE AND RUNNING GEAR

- A single Cummins QSB 380 hp engine with Cummins SmartCraft Vessel Integration System is standard. Other engines are available as options.
- Engine mounts are flexible rubber isolation mounts drilled and tapped into steel reinforced stringers.
- Each Aquamet shaft is individually tapered and keyed to match its coupling and propeller to eliminate vibration.
- PSS dripless shaft seals are standard with a water injection port for lubrication. Flangeless brass and rubber cutlass bearing pressed into stern tube.
- CNC machined Nibral propellers custom-designed to match engine output. Custom cast heavy-duty skeg bar to mount rudder base and protect the propeller on single engine applications.
- Custom cast manganese bronze high speed rudder with stainless steel shaft and keyway. Bronze keyed tiller arm with emergency rudder stops and locking pin. Tides Marine composite, dripless rudder bearing and seal assembly.
- Hydraulic steering system with pressurized reservoir and high- pressure tubing.
- Glendinning electronic control with chromed handle and built-in, low speed idle for easy docking.
- 4 hp bow thruster with joystick control is located at the helm.
- Audible and visual alarms for engine temperature and oil pressure.
- Stainless steel trim tabs with electric rams and LED position indicators at helm.

## ENGINE COOLING SYSTEM

Raw water intake through dual 2' hull-mounted scoop strainers and bronze seacock. Full flow inlet leads to large basket strainer with removable filter element. Stainless steel sea chest has built-in winterizing ports and is fitted for optional crash pump. The dual inlet sea chest allows for the vessel's intake filters to be changed without stopping vessel operation.

## ENGINE EXHAUST WATER SYSTEM

Underwater exhaust system with oversized muffler for noise suppression. Exhaust bypass reduces noise and backpressure and increases fuel efficiency.

## ENGINE FUEL SYSTEM

200 gallons of fuel onboard with sight gauge on tank. Fuel hoses are type A1 flame resistant, USCG-approved, with pressed drip proof fittings. Single Racor fuel filter /water separator. All

shutoff valves accessible from engine room.

## BILGE SYSTEM

Each of the three compartments contains a 2,000 GPH pump with an additional 3,700 GPH high water emergency bilge pump located in engine room. All pumps have float switches and manual override. All pumps are fitted with one-way valve and anti-siphon loops to reduce water in bilges. An audible high bilge alarm is located at the helm for the engine room bilge pump.

## POTABLE WATER SYSTEM

A 60-gallon polyethylene water tank is located below the floor. A 6-gallon FRP polyester lined hot water heater with combination 240 volt AC and engine heat exchanger heating element. All pressurized plumbing is hard-piped.

## GRAY WATER SYSTEM

Direct overboard discharge for sinks and shower pump. Shower pump is operated by a switch in the shower with a run-dry 12 V DC pump.

## BLACK WATER SYSTEM

The black water tank is a 35-gallon polyethylene tank located in engine room. Discharge is via deck pumpout; overboard discharge is optional.

## WINDSHIELD WIPERS AND WASHERS

Three 12 volt windshield wipers with fresh water wash and variable speed controllers. Wipers will autopark. Wipers are pantograph-type with 18" blades.

## AUTOMATIC FIRE SUPPRESSION SYSTEM

Heat activated FM 200 system dispenses environmentally-compliant fire suppression via automatic discharge. Indicator light at helm.

## ELECTRICAL SPECIFICATIONS

### GENERAL

Electrical terminals are double-crimped or waterproof Deutsch connectors. Bulkhead penetrations are foam sealed to isolate each compartment. Thru hull penetrations and sea strainers are bonded to an exterior Dynaplate with 8 gauge wire. Rudders, shafts and trim tabs are independently protected with zinc anodes from corrosion. All wiring is tinned copper and meets or exceeds USCG / ABYC / NMMA standards.

### GENERATOR

5 kw Onan generator (33 hours) with sound shield, dedicated start battery and remote start.

## BATTERY SWITCHES

Battery switches are located at the helm. Each battery bank is independently switched.

## BATTERIES / CHARGING

Batteries are 12/225 AGM-8D capacity for the house and engine banks ? 2 house and 1 engine start. Two 12/90 Gp 31 batteries each provide power for the 4 hp bow thruster, windlass and for the generator. Additionally, there is a 60 amp, 240 volt AC battery charger incorporated into the electrical system.

## INVERTER

A 2,500 watt inverter converts high-output battery power to 120 volt AC. It functions as the distribution system for the 120 volt AC power consumers.

## ENGINE ROOM LIGHTS

Four DC fluorescent, vapor proof lights.

## CIRCUIT BREAKER PANELS

Custom AC/DC electrical panels are installed on the vessel with full backlighting. Internal Deutsch connectors are installed for seamless connections and reliability.

## NAVIGATION AIDS

12 volt LED navigation and anchor lights to meet USCG 2005 standard.

## SHOREPOWER

Vessel comes with a 50 amp, 240 volt shorepower inlet. Ship is supplied with a 50 foot, 50 amp, 240 volt AC cord with Hubbell Shoreguard technology.

## ISOLATION TRANSFORMER

A 12 kVa isolation transformer accepts and outputs 240 volt AC providing the vessel's power while protecting all systems from shore supply. Soft Start feature suppresses the inrush current from the transformer and prevents the shorepower fuse from blowing.

## ELECTRICAL MONITORING SYSTEM

Mastervolt Masterlink System incorporating Masterlink ACM -1 power analyzer for both 240 and 120 systems and a Masterlink BTM III battery monitor panel. The ACM provides overview of available power and alarm functions for lo/hi voltage, frequency and overload. The BTM-III battery monitor can monitor up to three banks to provide voltage, current, amp hours, time remaining and remaining capacity in percentage terms.

## DVD/CD PLAYER



Includes built in amplifier, four speakers (in bridgedeck overhead and belowdecks), satellite radio-ready, wireless remote. System plays DVDs, CDs, DVD-R/RWs, CD-R/RWs and MP3/WMA discs and is compatible with Alpine CD changer or iPod adapter.

TV 15" LCD Jensen television with antenna mounted facing berth belowdecks.

## HORN

One 12 volt, DC, chromed, stainless steel trumpet air horn mounted on the cabin house operated from a switch and the helm.

## DECK HARDWARE

### GENERAL

All deck hardware is either 316 stainless steel or chromed bronze. All fitting bolts and screws are 316 stainless. Joints are bedded with a marine silicone adhesive sealant.

### WINDLASS

12v windlass with helm and bow controls.

### WINDSHIELD

Tempered safety glass set in aluminum frames with center opening window. Sliding side windows to port and starboard.

### DECK SCUPPERS

Four 2' aft drains and two 5/8" scupper hatch drains around hatches. All deck drains exit above the waterline and are self bailing with anti-return valves.

### CLEATS

Six 10" Herroshoff-style cleats located in the midships, bow area and cockpit.

### ANCHOR ROLLER

Custom polished stainless steel stemhead fitting with marithane roller and stainless steel chafe plate on deck.

### BOW RAIL

Custom, 1 1/4" stainless steel bow rail with burgee holder.

### CAP RAIL

Teak cap rail finished in high gloss, two-part polyurethane surrounding the vessel with a vinyl rub rail and a 1 1/2" stainless steel rub strake to protect the teak finish. The splash rail is teak with a

stainless steel rub strake on the outer surface.

## ENGINE AIR INTAKES

Distinctive, wing-shaped stainless steel intake grills on either side of cabin side. Delta T intake baffled vents.

## CABIN HOUSE STRIPE

Vinyl accent stripe around the front of the coach house extending to the engine air intake grill.

## DECK FILLS

Two 2" fuel fills located on the port/starboard sides designed for high speed filling. One 1 ½" water fill located to port and one 1 ½" black water pump out fitting located on the starboard side. All deck plates are engraved with fluid labels.

## COCKPIT SOLE HATCHES

Three FRP hatches access the steering and the stowage compartments. Each has stainless steel flush hinges, positive latching hatch pulls and the lazarettes have gas-assisted struts. Each hatch is guttered and drained overboard drains and rubber gasket sealed to inhibit water intrusion.

## BRIDGEDECK HATCH

An engine hatch with gas-assisted lift and positive latches opens to allow full access to the systems and the engines. The hatch has a FRP shell on the sound enclosure for easy cleaning.

## DUAL ANCHOR LOCKER AND HATCHES

The dual anchor lockers drain to a common drain that exits overboard. Two hatches with stainless steel hinges and latches. Hatches have PVC coated wire supports with hooks. The lid has a gasket to inhibit water intrusion. There is a raw water washdown coiled hose and nozzle standard.

## DECK/ROOF HATCHES

Five black tinted hatches with polished frames, one over the galley island, one over the head, and a 24" hatch located in the master cabin. Two 18"x18" hatches are located above the helm and navigator's seats in the bridgedeck. The hatches have multi-position openers and a locking feature for security. The hatch interior trims are plastic to match the headliners.

## SKYSCREENS FOR HATCHES

5 Skyscreens for hatches 1 in the master cabin, 1 in the galley, 1 in the head and two in the bridgedeck roof to provide both screening and privacy.

## PORTLIGHTS

Six polished stainless steel opening ports with screens ? two in the galley, two in the head, and two in the master cabin.

## INTERIOR

### GENERAL

Interior is finished in cherry: bulkheads, trim and cabinetry. Cabin sole is satin finished teak and holly. Cabinet, locker and cabin door frames, drawer faces and frames, and risers are solid wood. Cabinet, locker and cabin door panels are cherry veneer plywood. Bulkheads are cherry veneer with solid wood trim. Positive catch hardware on all doors and drawers. All interior wood is satin-finished. Grab rails at the companionway.

### LIGHTING

#### Master Cabin

Two reading and nine overhead lights. In the galley there are two overhead and one countertop light. In the head there are two waterproof overhead lights and two vanity mirror lights. Six L.E.D. courtesy lights throughout. Hanging lockers have closet lights with door microswitches.

#### Bridgedeck

Four overhead lights located over the side settees. Two red/white navigation lights over helm and navigation areas. Two L.E.D. courtesy lights.

### OUTLETS

#### Master Cabin

One 120 volt AC outlet on starboard side interior above locker.

#### Head

One 120 volt AC outlet at vanity.

#### Galley

One 120 volt AC outlet located under the microwave / cabinet and a second outlet incorporated into the coffeemaker at countertop height.

Engine Room- One 120 volt AC outlet on the inverter

#### Helm

One 12 volt DC outlet located at side helm console.

Navigation area- One 12v DC outlet.

120 volt AC outlets are GFCI at source.

## MASTER CABIN

Queen sized island berth with two pull-out drawers below. Hanging locker on the port side of the cabin. Locker with shelves on the starboard side of the cabin. Full length shelves are located on both sides outboard of the berth. Upholstered UltraLeather headboard and berth frame.

## HULL SIDES

Battens are attached to port and starboard hullsides above berth top and extend aft to meet port and starboard hullside lockers. Satin-finish.

## COUNTERTOPS

Galley top is solid surface material. The hanging locker and shelf have countertops with wood fiddles.

## HEADLINER

Foam backed vinyl with vinyl surround around hatches.

## GALLEY

U-shaped galley with opening door outboard and an opening, rounded counter island. Deep stainless steel sink with a pull out faucet head. Stainless steel refrigerator drawer is 12 V DC under counter model. Stainless steel coffeemaker with 120 volt AC outlet is plumbed into freshwater system. There is a 240 volt AC electric, two-burner cooktop set into the galley countertop with countertop filler covering. Microwave oven installed in cabinet above sink. Trash bin beneath companionway steps. There is an insulated storage bin with drain and countertop hatch.

## HEAD AND SHOWER

Head sink is stainless steel under counter-style with a single lever hot /cold faucet on a solid surface countertop. Sink has additional stowage below and a vanity cabinet beside. A hamper and a towel locker are located on the outboard side of the toilet and shower. There is also a dry locker located on the outboard side of the shower fitted with a gasketed locker door. Toilet is Jabsco Quiet Flush electric head with discharge to holding tank. Shower is a separate compartment with a clear wall and self-latching door. The shower head is massage-type on sliding bar. Recessed shower grate and remote pump for drainage. The head has a 1/4? mirror on the forward bulkhead.

## BRIDGE DECK

## GENERAL

Bridge deck has two settees with top access storage under seating. Cabin sides are finished in teak-tone laminate above the seating. Aft of the settees and outboard of them there is teak trim work. Overhead is finished in a foam-backed vinyl. Two stainless steel uprights are located at the aft end of the bridge deck. There is a hatch to allow access to the engine room. The center pane of the windshield is opening. Side windows also slide open. The sole is gelcoat finished with non-skid.

## COMPANIONWAY DOOR

The companionway is finished in the deck color with a hatch sliding into the cabin top. It has self draining channels on both sides.

## HELM

Custom designed helm station with full engine instrumentation control panel, auxiliary switch panel and instrument pod for optional electronics. The steering wheel is a 16" tilting, wood and stainless wheel with multi-stop lock. Controls for engine, trim tabs and bow thruster are located on the starboard side. A 3" binnacle compass is standard with all designs. At the navigator's seat there is a chart box with clear top (hinged) and a 12v outlet.

## HELM AND NAVIGATOR SEATING

Seats are benches mounted on 12 volt DC electrically activated hydraulic lifts. Seating converts to extension of aft benches/berths with seatbacks reversing for fore and aft use. The footrest is built into seat base.

## TABLE

A removable table fits into a base socket on the bridge deck. Dedicated storage is provided via hatch on the aft end of the starboard settee and a rollout to carry the tabletop is provided to ease access.

## ENCLOSURE

Back drop curtains with clear panels.

## COCKPIT

## TRANSOM DOOR

Large center-mounted transom door with stainless steel hinges and latch. Ensign holder.

## SWIM PLATFORM

A fiberglass swim platform runs across the transom to provide easy access to the yacht.

## COCKPIT SHOWER

Hot and cold shower in housing to match deck color.

## LIGHTS

Two flush-mounted courtesy lights are located port and starboard in the inboard hull sides.

## FINISHES

### HULL TOPSIDES

White or off-white gel coat is standard.

### BOTTOM PAINT

Micron CSC bottom paint with two coats epoxy undercoat.

### DECK

White or off-white gel coat.

## Exclusions

---

Owner's personal belongings.

## Disclaimer

---

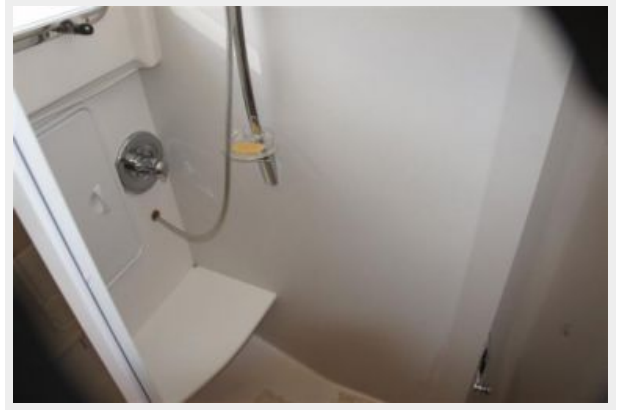
The Company offers the details of this vessel or yacht in good faith but cannot guarantee or warrant the accuracy of this information nor warrant the condition of the vessel. A buyer should instruct his representatives, agents, or his surveyors, to investigate such details as the buyer desires validated. This vessel or yacht is offered subject to prior sale, price change, or withdrawal without notice.

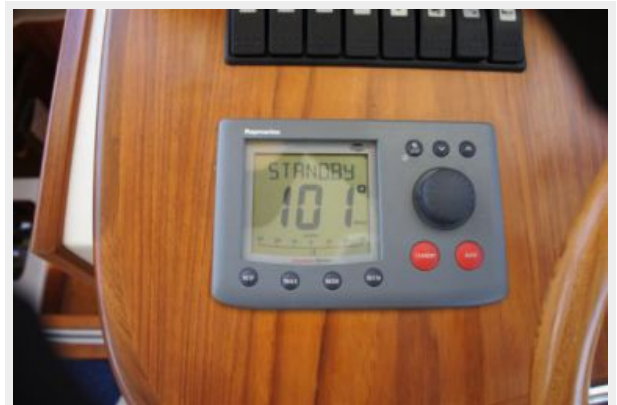
# PHOTOS















# CONTACTS

---

Andrey Shestakov, leading yacht broker of the sales department of Shestakov Yacht Sales Inc. Shestakov Yacht Sales Inc., the official representative of the Miami/Fort Lauderdale FL headquarters.

## Contact details

---

Email: [andrey@shestakovyachtsales.com](mailto:andrey@shestakovyachtsales.com)

Web: [shestakovyachtsales.com/en/](http://shestakovyachtsales.com/en/)

## Telephones

---

USA: +1(954)274-4435

## Office hours

---

Monday – Saturday: **9:00 - 21:00** EDT

Sunday: **closed**

## Address

---



Harbour Towne Marina, 850 NE 3rd St,  
STE 213, Dania, FL 33004