

53FT 1985 AMEL MANGO SPECIAL — AMEL



Builder: AMEL

Year Built: 1985

Model: Center Cockpit

Price: PRICE ON APPLICATION

Location: United States

LOA: 53' 0" (16.15m)

Beam: 15' 2" (4.62m)

Max Draft: 6' 9" (2.06m)

Our experienced yacht broker, Andrey Shestakov, will help you choose and buy a yacht that best suits your needs 53ft 1985 Amel Mango Special — AMEL from our catalogue. Presently, at Shestakov Yacht Sales Inc., we have a wide variety of yachts available on our sale's list. We also work in close contact with all the big yacht manufacturers from all over the world.

If you would like to buy a yacht 53ft 1985 Amel Mango Special — AMEL or would like help answering any questions concerning purchasing, selling or chartering a yacht, please call **+1(954)274-4435**

TABLE OF CONTENTS

TABLE OF CONTENTS	2
SPECIFICATIONS	3
Overview	3
Basic Information	4
Dimensions	4
Speed, Capacities and Weight	4
Accommodations	4
Hull and Deck Information	4
Engine Information	5
DETAILED INFORMATION	6
DIMENSIONS	6
ACCOMODATIONS	6
VESSEL WALK THROUGH	7
SALON and GALLEY	8
ELECTRICAL and ELECTRONICS	8
Mechanical	9
HULL and DECK	9
SAILS and RIGGING	10
Exclusions	10
Disclaimer	10
PHOTOS	11
CONTACTS	16
Contact details	16
Telephones	16
Office hours	16
Address	16

SPECIFICATIONS

Overview

TRUE BLUE WATER – GO ANYWHERE – VESSEL

Fully Air Conditioned – w/Generator

Ketch Rigged for Easy Sail Handling – Electric furlers on Main and Genoa

Huge Cockpit – Wide Walk Around Side Decks – Large Fore Deck – Aft Deck

Stainless Steel Handrail Around Entire Vessel

Loads of Deck Storage Lockers

Private Full Beam Aft Stateroom w/Queen Berth– w/En-suite Head and Shower – Loads of Storage

Forward Guest Cabin Sleeps 2 or 3 with Private Access to Forward Head & Shower – Loads of Storage

Workshop in Companionway Leading Aft -

Large Salon has Comfortable Dinette – Additional Settee and Pull out Pilot Berth –Full Nav Station – and Spacious Well Equipped Galley –Additional Built in Refrigerator/Freezer Compartments under Dinette Seats

High Quality Build with “Yacht Like” Interior Woodwork and Joinery

The Amel Super Maramu is well known to cruisers worldwide as a strong and able offshore vessel, easily sailed by a cruising couple or single handed, outfitted in a way that provides maximum comfort and safety with abundant, easily accessible storage for all the things one needs for long offshore passages. MEANWHILE is easy to handle with her roller furling and electric winches, and is easily maintained with her faux teak on deck and beautiful African Mahogany below.

The port bow has a spacious anchor and rope locker and the starboard bow has a large sail locker, both accessible from the deck. Below is a chain locker accessible through a watertight hatch in the forward collision bulkhead, forward of the V-berth Cabin.

This vessel was the prototype for the Super Maramu

Please call the listing broker for an appointment to see this vessel

Please click on “full specs” for more information DYSID:2974047

Basic Information

Category: Center Cockpit

Sub Category: Cruising Sailboat

Model Year: 1985

Year Built: 1985

Country: United States

Dimensions

LOA: 53' 0" (16.15m)

LWL: 41' 4" (12.60m)

Beam: 15' 2" (4.62m)

Max Draft: 6' 9" (2.06m)

Clearance: 65' 8" (20.02m)

MFG Length: 52' 6" (16.00m)

Speed, Capacities and Weight

Displacement: 35273 Pounds

Water Capacity: 264 Gallons

Holding Tank: 2 Gallons

Fuel Capacity: 217 Gallons

Accommodations

Total Cabins: 2

Total Berths: 5

Total Heads: 2

Hull and Deck Information

Hull Material: Fiberglass

Engine Information

Engines: 1

Manufacturer: Perkins

Model: 6-236

Engine Type: Inboard

Fuel Type: Diesel

DETAILED INFORMATION

DIMENSIONS

DesignerHenri Amel

Builder Chantier Amel

LOA 52'6" 16 meters

LWL 41'4" 12.60 m

Beam 15'2"c..... 4.60 m

Draft 6'9" 2.05 m

Bridge Clearance ... 65'8" 20 m

Fuel 217 Gal 821 ltr (in 2 SS tanks)

Water 264 gal 1000 ltr

Holding tanks ..(2)

Displacement 35,273 lbs 16 tons

Diesel Engine – Perkins 6-236 120 HP

3 blade propeller

Morse type controls

Dripless stuffing box

ACCOMODATIONS

2 private cabins – each with double berth, plus 2 additional berths – 2 heads w/showers

Large private Master cabin aft – en-suite with private head and shower -Private guest cabin forward

Settee/berth in saloon – starboard

Toilet holding tank on each toilet

2 extra opening, fresh air side windows in aft cabin

Quick remove stainless deck hatch bars allowing ample ventilation and security

Quick remove companion way bar allowing ample ventilation and security

AIR COND.: Marine Air Systems

VESSEL WALK THROUGH

Below decks forward is a V-berth Cabin that extends to a queen/full to port and a single berth to starboard. There are 2 bow thruster just aft of forward bulkhead. The forward cabin has its own dedicated 220V AC/heat.

Just aft there is a head to port and hanging locker to starboard.

The second watertight bulkhead lies between the forward head and the main saloon, with a gasketed door.

The Main Saloon is amidships with U-shaped settee and table to port and sofa with adjacent lockers to starboard. Above the sofa is a single fold out pilot berth. There is a 24 volt deep freezer/refrigerators under the settee cushions. There are also generous lockers and storage areas above the seating area, under and behind the settees and below the sole. There is also a dedicated 220 volt AC/Heater for this area.

Next aft is a Full Navigation Station with pull out seat, and large hanging locker to starboard and deep U-shaped Galley to port. The lockers in the galley and saloon all have lockdowns.

Proceeding aft through a passageway to starboard there is a Sea Berth/work shop and locker space opposite the engine room bulkhead. Under the work bench is one of the (2) Fuel tanks. The third watertight bulkhead is located between the workshop and the master cabin with a gasketed door.

To starboard directly aft of the bulkhead is a large hanging locker. Opposite is the second head with the same features as the forward head.

The forward head has an electric toilet with holding tank, a deep sink, shower, clothes drying rack and towel racks, plus generous storage lockers.

Aft is the Master Cabin, with queen bed to port and cushioned sitting area with desk/vanity/swing out stool to starboard. Under the berth is storage for charts and luggage, etc. It also gives access to the rudder quadrant. This also allows access for the installation of the emergency tiller. The aft cabin has its own dedicated AC/Heat. The last watertight bulkhead is between the master cabin and the on deck accessed lazarette.

A private head w/shower is along the Port side just forward as you enter the master cabin.

The lazarette stores the butane/propane in its own sealed locker that is vented to the sea. There

is ample storage for recreational supplies, dinghy, outboard, bicycles, fenders, lines and much more.

SALON and GALLEY

Salon:

Large Salon with U-Shaped dinette to Port, and settee to starbd

Pull out sew berth above settee, and Nav Station at foot of stairway -to Starbd

Galley: Galley is a deep u-shaped configuration – located aft of Salon on Port side

Propane tank in aft deck locker

Microwave – E-Wave

Refrigerator – Coolmatic Fridge/freezer – stand -alone unit with freezer over refrigerator

Hot water heater – Isotemp – 17 gal

Stove – LP gas – 2 burner w/oven (3 tanks)

SHUT OFF: on stove, on tank, solenoid

ELECTRICAL and ELECTRONICS

Electrical:

Generator – M]Northern Lights M753 220 v (3665 hours)

BATTERY CHARGER: Xantrex Trace (inverter)

New Electric switch panel

BATTERIES: 6 x 6 volt, 2 x 12 volt (in engine room boxes)

Electronics: (all electronics are older equipment and not guaranteed)

Radios: Icom IC M700 HF'SSB

Standard Horizon Intrepid VHF

Icom IC M700 PRO hf

Auto Pilot - Simrad AP11

Radar – Kodon MD 3404

GPS Magellan

Depth – Brookes & Gatehouse

Wind – Brooks & Gatehouse

Log & Speed – Brooks & Gatehouse

Compass – Sestrel Moore

Stereo – Jensen, Pioneer

Barometer – Barograph, Wempe

Mechanical

Engine – Perkins 6-236 120 hP

FILTERS: primary and secondary

BOW THRUSTER: 2 x Vetus –

ONTROLS: Morse type

WATER MAKER: Sea Recovery

BILGE PUMPS: one manual, 2 electric

WINDLASS: Lofrans electric

Air conditioning – Marine Air Systems

HULL and DECK

Plenty of walk around room on the spacious deck. Shrouds and chain plates mounted for unobstructed passage forward. SS railing for security. Molded Non-skid surface offers low maintenance and good footing. Center cockpit easily and comfortably seats 8-10 crew and guests. Hard dodger provides good visibility and protection.

Construction: Built to French Maritime Marine Offshore Category #1 standards, the hull is one piece, extremely strong solid laminate fiberglass for hull, keel and skeg with four watertight bulkheads and fiberglass laminate deck with balsa core.

Deck Equipment: The deck layout has a deep center cockpit with fixed helm seat, large folding

table, fresh water wash down, cockpit shower, line locker, sail locker. Also in the cockpit to port is a very large locker to store items, such as fishing gear, BBQ, dive tanks, etc (not included) . The floor of the cockpit opens on hydraulic hinges to reveal the full size engine room. You can stand up in the engine room with access to all sides of the engine, genset, dual fuel filters, water maker and hot water heater.

BULKHEADS: 7 (including Three watertight)

Mahogany bulkheads, fronts, counters and trim.

Fiberglass deck with non-skip paint

Ground Tackle: 60 lb CQR w/ 3/8 chain and 3/4 rode

Ground Tackle

60# CQR w/ 3/8 chain and 3/4 rode

Lofrans Tigres 24v anchor winch

SAILS and RIGGING

Ketch rigged, 3 furling systems, electrical furling gear, 5 sails in good condition. All sail handling can be easily operated by a single handler or a couple from the safety of the cockpit!

SPARS: (2) Aluminum masts and booms, plus (2) downwind Spars that can be attached to the forward mast

15 Sheet and halyard winches

ADDITIPNAL EAUIPMENT:

Life Raft – Givens buoy (not certified)

Exclusions

Owner's personal belongings.

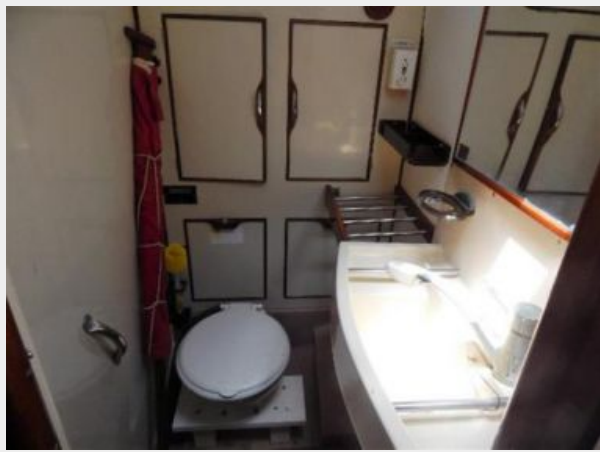
Disclaimer

The Company offers the details of this vessel or yacht in good faith but cannot guarantee or warrant the accuracy of this information nor warrant the condition of the vessel. A buyer should instruct his representatives, agents, or his surveyors, to investigate such details as the buyer desires validated. This vessel or yacht is offered subject to prior sale, price change, or withdrawal without notice.

PHOTOS











CONTACTS

Andrey Shestakov, leading yacht broker of the sales department of Shestakov Yacht Sales Inc. Shestakov Yacht Sales Inc., the official representative of the Miami/Fort Lauderdale FL headquarters.

Contact details

Email: andrey@shestakovyachtsales.com

Web: shestakovyachtsales.com/en/

Telephones

USA: +1(954)274-4435

Office hours

Monday – Saturday: **9:00 - 21:00** EDT

Sunday: **closed**

Address



Harbour Towne Marina, 850 NE 3rd St,
STE 213, Dania, FL 33004