

53FT 1985 AMEL MANGO SPECIAL — AMEL



Судостроитель: AMEL

Год постройки: 1985

Модель: Center Cockpit

Цена: ЦЕНА ЯХТЫ ПО ЗАПРОСУ

Местонахождение: United States

Длина общая: 53' 0" (16.15m)

Ширина: 15' 2" (4.62m)

Макс. осадка: 6' 9" (2.06m)

Купить 53ft 1985 Amel Mango Special — AMEL а также выбрать подходящую вам яхту из нашего каталога яхт вам поможет опытный яхтенный брокер Андрей Шестаков. На сегодняшний день компания Shestakov Yacht Sales Inc. имеет большое количество яхт в собственном списке продаж, а также тесно сотрудничает со всеми крупными яхтенными производителями по всему миру. Для того чтобы купить яхту 53ft 1985 Amel Mango Special — AMEL а также проконсультироваться по любому вопросу связанному с покупкой, продажей, чартером яхт позвоните по телефону **+7(918)465-66-44**.

ОГЛАВЛЕНИЕ

ОГЛАВЛЕНИЕ	2
ХАРАКТЕРИСТИКИ	3
Обзор	3
Основная информация	4
Размеры	4
Скорость, вместимость и масса	4
Размещение	4
Корпус и палуба	4
Информация о двигателе	5
ПОДРОБНОЕ ОПИСАНИЕ	6
DIMENSIONS	6
ACCOMODATIONS	6
VESSEL WALK THROUGH	7
SALON and GALLEY	8
ELECTRICAL and ELECTRONICS	8
Mechanical	9
HULL and DECK	9
SAILS and RIGGING	10
Исключения	10
Отказ от ответственности	10
ФОТОГРАФИИ	12
КОНТАКТЫ	17
Контактная информация	17
Телефоны	17
Время работы	17
Адрес	17

ХАРАКТЕРИСТИКИ

Обзор

TRUE BLUE WATER – GO ANYWHERE – VESSEL

Fully Air Conditioned – w/Generator

Ketch Rigged for Easy Sail Handling – Electric furlers on Main and Genoa

Huge Cockpit – Wide Walk Around Side Decks – Large Fore Deck – Aft Deck

Stainless Steel Handrail Around Entire Vessel

Loads of Deck Storage Lockers

Private Full Beam Aft Stateroom w/Queen Berth– w/En-suite Head and Shower – Loads of Storage

Forward Guest Cabin Sleeps 2 or 3 with Private Access to Forward Head & Shower – Loads of Storage

Workshop in Companionway Leading Aft -

Large Salon has Comfortable Dinette – Additional Settee and Pull out Pilot Berth –Full Nav Station – and Spacious Well Equipped Galley –Additional Built in Refrigerator/Freezer Compartments under Dinette Seats

High Quality Build with “Yacht Like” Interior Woodwork and Joinery

The Amel Super Maramu is well known to cruisers worldwide as a strong and able offshore vessel, easily sailed by a cruising couple or single handed, outfitted in a way that provides maximum comfort and safety with abundant, easily accessible storage for all the things one needs for long offshore passages. MEANWHILE is easy to handle with her roller furling and electric winches, and is easily maintained with her faux teak on deck and beautiful African Mahogany below.

The port bow has a spacious anchor and rope locker and the starboard bow has a large sail locker, both accessible from the deck. Below is a chain locker accessible through a watertight hatch in the forward collision bulkhead, forward of the V-berth Cabin.

This vessel was the prototype for the Super Maramu

Please call the listing broker for an appointment to see this vessel

Please click on “full specs” for more information DYSID:2974047

Основная информация

Тип судна: Center Cockpit

Подкатегория: Крейсерская яхта

Модельный год: 1985

Год постройки: 1985

Страна: United States

Размеры

Длина общая: 53' 0" (16.15m)

Длина по ватерлинии: 41' 4" (12.60m)

Ширина: 15' 2" (4.62m)

Макс. осадка: 6' 9" (2.06m)

Трапы: 65' 8" (20.02m)

Длина привального бруса: 52' 6"
(16.00m)

Скорость, вместимость и масса

Водоизмещение: 35273 Pounds

Вместимость воды: 264 Gallons

Вместимость сточного бака: 2 Gallons

Объем топливного бака: 217 Gallons

Размещение

Всего кают: 2

Всего коек: 5

Всего ком. состава: 2

Корпус и палуба

Материал корпуса: Fiberglass

Информация о двигателе

Двигатели: 1

Производитель: Perkins

Модель: 6-236

Тип двигателя: Inboard

Тип топлива: Diesel

ПОДРОБНОЕ ОПИСАНИЕ

DIMENSIONS

DesignerHenri Amel

Builder Chantier Amel

LOA 52'6" 16 meters

LWL 41'4" 12.60 m

Beam 15'2"с..... 4.60 m

Draft 6'9" 2.05 m

Bridge Clearance ... 65'8" 20 m

Fuel 217 Gal 821 ltr (in 2 SS tanks)

Water 264 gal 1000 ltr

Holding tanks ..(2)

Displacement 35,273 lbs 16 tons

Diesel Engine – Perkins 6-236 120 HP

3 blade propeller

Morse type controls

Dripless stuffing box

ACCOMODATIONS

2 private cabins – each with double berth, plus 2 additional berths – 2 heads w/showers

Large private Master cabin aft – en-suite with private head and shower -Private guest cabin forward

Settee/berth in saloon – starboard

Toilet holding tank on each toilet

2 extra opening, fresh air side windows in aft cabin

Quick remove stainless deck hatch bars allowing ample ventilation and security

Quick remove companion way bar allowing ample ventilation and security

AIR COND.: Marine Air Systems

VESSEL WALK THROUGH

Below decks forward is a V-berth Cabin that extends to a queen/full to port and a single berth to starboard. There are 2 bow thruster just aft of forward bulkhead. The forward cabin has its own dedicated 220V AC/heat.

Just aft there is a head to port and hanging locker to starboard.

The second watertight bulkhead lies between the forward head and the main saloon, with a gasketed door.

The Main Saloon is amidships with U-shaped settee and table to port and sofa with adjacent lockers to starboard. Above the sofa is a single fold out pilot berth. There is a 24 volt deep freezer/refrigerators under the settee cushions. There are also generous lockers and storage areas above the seating area, under and behind the settees and below the sole. There is also a dedicated 220 volt AC/Heater for this area.

Next aft is a Full Navigation Station with pull out seat, and large hanging locker to starboard and deep U-shaped Galley to port. The lockers in the galley and saloon all have lockdowns.

Proceeding aft through a passageway to starboard there is a Sea Berth/work shop and locker space opposite the engine room bulkhead. Under the work bench is one of the (2) Fuel tanks. The third watertight bulkhead is located between the workshop and the master cabin with a gasketed door.

To starboard directly aft of the bulkhead is a large hanging locker. Opposite is the second head with the same features as the forward head.

The forward head has an electric toilet with holding tank, a deep sink, shower, clothes drying rack and towel racks, plus generous storage lockers.

Aft is the Master Cabin, with queen bed to port and cushioned sitting area with desk/vanity/swing out stool to starboard. Under the berth is storage for charts and luggage, etc. It also gives access to the rudder quadrant. This also allows access for the installation of the emergency tiller. The aft cabin has its own dedicated AC/Heat. The last watertight bulkhead is between the master cabin and the on deck accessed lazarette.

A private head w/shower is along the Port side just forward as you enter the master cabin.

The lazarette stores the butane/propane in its own sealed locker that is vented to the sea. There

is ample storage for recreational supplies, dinghy, outboard, bicycles, fenders, lines and much more.

SALON and GALLEY

Salon:

Large Salon with U-Shaped dinette to Port, and settee to starbd

Pull out sew berth above settee, and Nav Station at foot of stairway -to Starbd

Galley: Galley is a deep u-shaped configuration – located aft of Salon on Port side

Propane tank in aft deck locker

Microwave – E-Wave

Refrigerator – Coolmatic Fridge/freezer – stand -alone unit with freezer over refrigerator

Hot water heater – Isotemp – 17 gal

Stove – LP gas – 2 burner w/oven (3 tanks)

SHUT OFF: on stove, on tank, solenoid

ELECTRICAL and ELECTRONICS

Electrical:

Generator – M]Northern Lights M753 220 v (3665 hours)

BATTERY CHARGER: Xantrex Trace (inverter)

New Electric switch panel

BATTERIES: 6 x 6 volt, 2 x 12 volt (in engine room boxes)

Electronics: (all electronics are older equipment and not guaranteed)

Radios: Icom IC M700 HF'SSB

Standard Horizon Intrepid VHF

Icom IC M700 PRO hf

Auto Pilot - Simrad AP11

Radar – Kodon MD 3404

GPS Magellan

Depth – Brookes & Gatehouse

Wind – Brooks & Gatehouse

Log & Speed – Brooks & Gatehouse

Compass – Sestrel Moore

Stereo – Jensen, Pioneer

Barometer – Barograph, Wempe

Mechanical

Engine – Perkins 6-236 120 hP

FILTERS: primary and secondary

BOW THRUSTER: 2 x Vetus –

ONTROLS: Morse type

WATER MAKER: Sea Recovery

BILGE PUMPS: one manual, 2 electric

WINDLASS: Lofrans electric

Air conditioning – Marine Air Systems

HULL and DECK

Plenty of walk around room on the spacious deck. Shrouds and chain plates mounted for unobstructed passage forward. SS railing for security. Molded Non-skid surface offers low maintenance and good footing. Center cockpit easily and comfortably seats 8-10 crew and guests. Hard dodger provides good visibility and protection.

Construction: Built to French Maritime Marine Offshore Category #1 standards, the hull is one piece, extremely strong solid laminate fiberglass for hull, keel and skeg with four watertight bulkheads and fiberglass laminate deck with balsa core.

Deck Equipment: The deck layout has a deep center cockpit with fixed helm seat, large folding

table, fresh water wash down, cockpit shower, line locker, sail locker. Also in the cockpit to port is a very large locker to store items, such as fishing gear, BBQ, dive tanks, etc (not included) . The floor of the cockpit opens on hydraulic hinges to reveal the full size engine room. You can stand up in the engine room with access to all sides of the engine, genset, dual fuel filters, water maker and hot water heater.

BULKHEADS: 7 (including Three watertight)

Mahogany bulkheads, fronts, counters and trim.

Fiberglass deck with non-skip paint

Ground Tackle: 60 lb CQR w/ 3/8 chain and 3/4 rode

Ground Tackle

60# CQR w/ 3/8 chain and 3/4 rode

Lofrans Tigres 24v anchor winch

SAILS and RIGGING

Ketch rigged, 3 furling systems, electrical furling gear, 5 sails in good condition. All sail handling can be easily operated by a single handler or a couple from the safety of the cockpit!

SPARS: (2) Aluminum masts and booms, plus (2) downwind Spars that can be attached to the forward mast

15 Sheet and halyard winches

ADDITIPNAL EAUIPMENT:

Life Raft – Givens buoy (not certified)

Исключения

При продаже яхты исключаются личные вещи владельца.

Отказ от ответственности

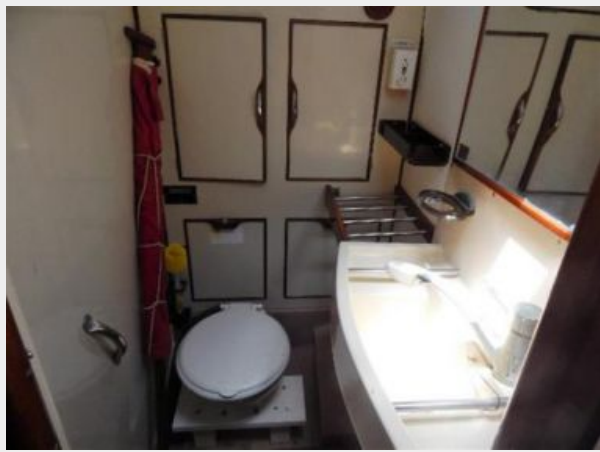
Компания предоставляет описание судна или яхты добросовестно, но не может гарантировать точность этой информации, а также не ручается за техническое состояние. Покупатель должен проинструктировать своих агентов или оценщиков исследовать представленную информацию более подробно, по собственному желанию. Продажа судна или яхты, изменение цены или снятие с продажи будет происходить без

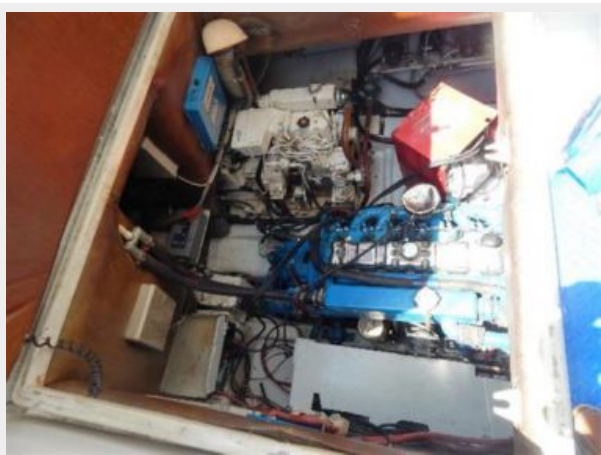
предварительного уведомления.

ФОТОГРАФИИ











КОНТАКТЫ

Андрей Шестаков (Andrey Shestakov) – ведущий яхтенный брокер отдела продаж яхт и судов компании Shestakov Yacht Sales Inc. Официальный представитель Shestakov Yacht Sales Inc. для русскоговорящих клиентов в центральном офисе компании в Майами/Форт Лодердейл/Флорида/США.

Контактная информация

Email: andrey@shestakovyachtsales.com

Web: shestakovyachtsales.com

Телефоны

Краснодарский край: **+7(918)465-66-44**

США, Майами, Флорида: **+1(954)274-4435**

Время работы

Понедельник – Суббота: **9:00 - 21:00**
EDT

Воскресенье: **Закрито**

Адрес



Harbour Towne Marina, 850 NE 3rd St,
STE 213, Dania, FL 33004