

CAT AWEIGH — OCEAN YACHTS



Builder: [Ocean Yachts](#)

Year Built: 2007

Model: Sport Fisherman

Price: PRICE ON APPLICATION

Location: United States

LOA: 50' 0" (15.24m)

Beam: 16' 9" (5.11m)

Min Draft: 4' 5" (1.35m)

Cruise Speed: 30 Kts. (35 MPH)

Max Speed: 35 Kts. (40 MPH)

Our experienced yacht broker, Andrey Shestakov, will help you choose and buy a yacht that best suits your needs **CAT AWEIGH — Ocean Yachts** from our catalogue. Presently, at Shestakov Yacht Sales Inc., we have a wide variety of yachts available on our sale's list. We also work in close contact with all the big yacht manufacturers from all over the world.

If you would like to buy a yacht **CAT AWEIGH — Ocean Yachts** or would like help answering any questions concerning purchasing, selling or chartering a yacht, please call **+1(954)274-4435**

TABLE OF CONTENTS

TABLE OF CONTENTS	2
SPECIFICATIONS	5
Overview	5
Basic Information	5
Dimensions	5
Speed, Capacities and Weight	5
Accommodations	6
Hull and Deck Information	6
Engine Information	6
DETAILED INFORMATION	7
Accommodations	7
Companionway	7
Master Stateroom, Midship Port	7
VIP Stateroom, Forward	7
Guest Stateroom, Aft	8
Salon	8
Master Head	8
Day Head, Forward Starboard	8
Galley, Port	9
Flybridge	9
Helm / Electronics and Navigation	9
Deck	10
Engine and Mechanical Equipment	10
Electrical System / Equipment	10
Cockpit / Fishing Equipment	11
Exclusions	11
Salesman's Comments	11
Exclusions	11

Disclaimer	11
PHOTOS	12
Profile 2 - Bow	12
Profile 3 - Bow	12
Companionway 1	12
Companionway 2	12
Companionway 3 - Clothes Washer & Clothes Dryer	13
Master Stateroom 1	13
Master Stateroom 2	13
Master Stateroom 3	13
VIP Stateroom 1	13
VIP Stateroom 2	13
VIP Stateroom 3	14
Guest Stateroom 1	14
Guest Stateroom 2	14
Guest Stateroom 3	14
Salon 1 - Sofa	14
Salon 2	14
Salon 4 - Barrel Chair & Entertainment Center	15
Salon 3 - Dinette	15
Master Head 1	15
Master Head 2	15
Master Head 3 - Shower	16
Master Head 4	16
Day Head 1	16
Day Head 2	16
Galley 1	17
Galley 2	17
Galley 4	17

Galley 3	17
Flybridge 1 - Helm Seats	17
Flybridge 2	17
Helm / Electronics & Navigation 1	18
Helm / Electronics & Navigation 2	18
Deck 2 - Port Sidewalk	18
Deck 1 - Foredeck	18
Deck 3 - Starboard Sidewalk	19
Cockpit / Fishing Equipment 1 - Rocket Launchers	19
Cockpit / Fishing Equipment 2 - Tackle Center	19
Cockpit / Fishing Equipment 3 - Cockpit	19
Cockpit / Fishing Equipment 4 - Cockpit Camera	19
Profile 4	19
CONTACTS	20
Contact details	20
Telephones	20
Office hours	20
Address	20

SPECIFICATIONS

Overview

This 50' Ocean Yacht Super Sport is powered by the highly desirable CAT C-18 diesels that have only 1230 original hours! She has been priced to be sold NOW! All serious offers are encouraged!

Basic Information

Category: Sport Fisherman

Sub Category: Convertible

Model Year: 2007

Year Built: 2007

Country: United States

Coast Guard #: 1196324

Vessel Top: Hardtop

Fly Bridge: Yes

Cockpit: Yes

Dimensions

LOA: 50' 0" (15.24m)

Beam: 16' 9" (5.11m)

Min Draft: 4' 5" (1.35m)

Clearance: 18' 0" (5.49m)

Speed, Capacities and Weight

Cruise Speed: 30 Kts. (35 MPH)

Max Speed: 35 Kts. (40 MPH)

Displacement: 54038 Pounds

Water Capacity: 150 Gallons

Fuel Capacity: 780 Gallons

Accommodations

Total Cabins: 3

Total Berths: 8

Sleeps: 8

Total Heads: 2

Hull and Deck Information

Hull Material: Fiberglass

Deck Material: Fiberglass

Hull Configuration: Modified V-Hull

Engine Information

Engines: 2

Manufacturer: Caterpillar

Model: C-18

Engine Type: Inboard

Fuel Type: Diesel

DETAILED INFORMATION

Accommodations

Sleeps six owners and guests in Three Staterooms plus pull-out bed in Salon sofa sleeps two for a total of eight berths. One Master Head with shower, One Day Head with shower.

Companionway

- Full-size stacked washer & dryer

Master Stateroom, Midship Port

- Headliner
- Carpeting
- DVD player
- Night stands
- Stereo system
- En-suite Head
- Hanging locker
- Drawer storage
- Air conditioning
- 22" Flat-screen TV
- Direct & Indirect lighting w/ dimmers
- Queen walk-around bed w/ storage under

VIP Stateroom, Forward

- Carpeting
- DVD player
- Stereo system
- Flat-screen TV
- Air conditioning
- (2) Hanging lockers
- Walk-around queen berth
- Overhead & reading lights
- Storage cabinets & drawers
- Private en-suite access to Day Head

Guest Stateroom, Aft

- Carpeting
- Air conditioning
- Storage drawers
- Side-by-side berths
- Overhead & reading lights
- Large cedar-lined hanging locker

Salon

- Valances
- Headliner
- Carpeting
- Barrel chair
- Air conditioning
- Storage lockers
- Silhouette blinds
- Overhead lighting
- Overhead grab rail
- Bose CD / DVD player
- Central vacuum system
- Trac Vision Direct TV receiver
- Teak top ottoman table w/ storage
- Large dinette w/ L-shaped seating & large teak table
- Large L-shaped sofa w/ rod & tackle storage underneath
- Entertainment center w/ 32" Pop-up flat screen TV & Bose surround sound system

Master Head

- Head
- Exhaust fan
- Lockers for storage
- Large walk-in shower w/ seat
- Corian vanity w/ sink & mirror

Day Head, Forward Starboard

- Head
- Shower
- Exhaust fan

- Locker for storage
- Large Corian vanity w/ sink

Galley, Port

- Exhaust fan
- Trash compactor
- Scottsman ice maker
- Recessed electric stove
- Sub-Zero drawer-style freezers
- Sub-Zero drawer-style refrigerators
- Corian counters w/ large working areas
- Sharp Microwave oven / Convection oven
- Numerous cabinets above & under counters
- Large under-mount sink w/ garbage disposal & instant hot water dispenser
- Below Galley is a large storage area that is accessed via a convenient flip-up door recessed into the floor

Flybridge

The well laid out Flybridge has the optional cruising layout which provides an additional bench seat with rod storage under along the port side and a covered recessed electronics box. There is additional seating and storage in front of the Helm.

- Bridge AC
- LED Lighting
- (2) Helm chairs
- (4) Spreader lights
- Recessed radio box in hardtop
- (2) Lewmar hatches in hardtop
- Glendinning single lever controls
- Covered recessed electronics boxes
- Pod-Style Helm w/ stainless wheel & Rybo controls
- Ample seating w/ port side bench & large bench in front of Helm
- Three-Sided EZ2CY Bridge enclosure w/ the aft (4th) side in Strataglass

Helm / Electronics and Navigation

- SAT Weather
- Garmin 7612
- KVH SAT TV
- ACR Spot light

- Danforth compass
- Under water lights
- (2) Icom VHF radios
- Bridge stereo system
- Sitex sea temp gauge
- Raymarine fish finder
- KVH Trac Phone F-55
- Simrad AP25 auto pilot
- Raymarine Tri-Data System
- Raymarine E-120 12" display
- Raymarine 10kW 6' open array radar
- Engine Room camera viewable on E-120
- DVD on Bridge through E-120 display & stereo system
- Cockpit camera recording to a DVR / DVD burner & viewable on E-120

Deck

- Bow Deck hatch
- Aluminum bow rail
- Aluminum hand rails
- Stainless steel mooring cleats

Engine and Mechanical Equipment

She features the optional (most desired) CAT C-18 Power Package.

- Oil change system
- Freezer compressors
- Engine Room Camera
- Emergency bilge valve
- Air conditioning pump
- Air conditioning compressors
- Twin 1015 hp. Diesel I/B 2007 CAT C-18's w/ 1230 hrs.

Electrical System / Equipment

- Battery charger
- 11.5kW Onan generator
- 12v, 24v DC electrical system
- 110v, 220v AC electrical system
- 50amp Shore power w/ Glendenning

Cockpit / Fishing Equipment

- Cockpit sink
- Trolling valves
- Cockpit freezer
- Tackle drawers
- Rupp center rigger
- Live well in Transom
- LED Cockpit lighting
- Teak steps into Salon
- Teak covering boards
- Storage in Cockpit floor
- (8) Rod holders in gunnels
- Rupp Triple spreader outriggers
- Rocket launcher on aft Bridge railing
- Insulated drink step box w/ chill plate
- (4) Custom Rod holders in Cockpit wings
- (2) Large in-floor insulated fish boxes (both w/ freezer plates)

Exclusions

- Owner's personal gear and items

Salesman's Comments

This 50' Ocean Yacht Super Sport is powered by the highly desirable CAT C-18 diesels that have only 1230 original hours! She has been priced to be sold NOW! All serious offers are encouraged!

Exclusions

Owner's personal belongings.

Disclaimer

The Company offers the details of this vessel or yacht in good faith but cannot guarantee or warrant the accuracy of this information nor warrant the condition of the vessel. A buyer should instruct his representatives, agents, or his surveyors, to investigate such details as the buyer desires validated. This vessel or yacht is offered subject to prior sale, price change, or withdrawal without notice.

PHOTOS

Profile 2 - Bow



Profile 3 - Bow



Companionway 1



Companionway 2



Companionway 3 - Clothes Washer & Clothes Dryer



Master Stateroom 1



Master Stateroom 2



Master Stateroom 3



VIP Stateroom 1



VIP Stateroom 2



VIP Stateroom 3



Guest Stateroom 1



Guest Stateroom 2



Guest Stateroom 3



Salon 1 - Sofa



Salon 2



Salon 3 - Dinette



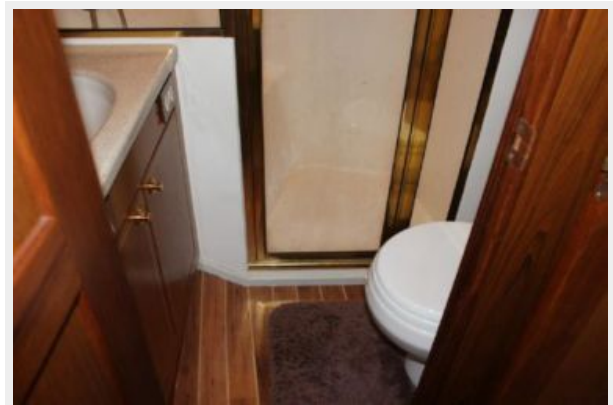
Salon 4 - Barrel Chair & Entertainment Center



Master Head 1



Master Head 2



Master Head 3 - Shower



Master Head 4



Day Head 1



Day Head 2



Galley 1



Galley 2



Galley 3



Galley 4



Flybridge 1 - Helm Seats



Flybridge 2



Helm / Electronics & Navigation 1



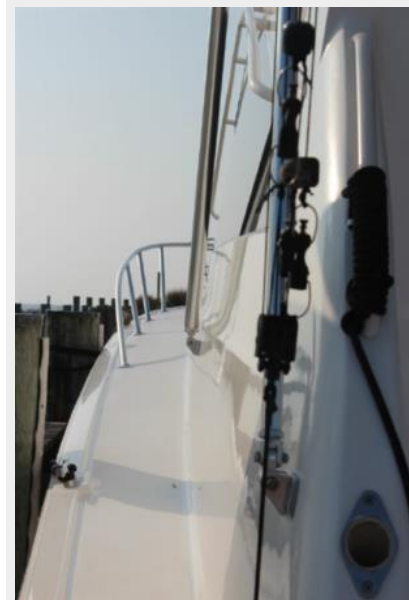
Helm / Electronics & Navigation 2



Deck 1 - Foredeck



Deck 2 - Port Sidewalk



Deck 3 - Starboard Sidewalk



Cockpit / Fishing Equipment 1 - Rocket Launchers



Cockpit / Fishing Equipment 2 - Tackle Center



Cockpit / Fishing Equipment 3 - Cockpit



Cockpit / Fishing Equipment 4 - Cockpit Camera



Profile 4



CONTACTS

Andrey Shestakov, leading yacht broker of the sales department of Shestakov Yacht Sales Inc. Shestakov Yacht Sales Inc., the official representative of the Miami/Fort Lauderdale FL headquarters.

Contact details

Email: andrey@shestakovyachtsales.com

Web: shestakovyachtsales.com/en/

Telephones

USA: +1(954)274-4435

Office hours

Monday – Saturday: **9:00 - 21:00** EDT

Sunday: **closed**

Address



Harbour Towne Marina, 850 NE 3rd St,
STE 213, Dania, FL 33004