

ABIGAIL — GRAND BANKS



Builder: GRAND BANKS

Year Built: 1998

Model: Trawler

Price: PRICE ON APPLICATION

Location: United States

LOA: 36' 0" (10.97m)

Beam: 12' 8" (3.86m)

Min Draft: 4' 0" (1.22m)

Our experienced yacht broker, Andrey Shestakov, will help you choose and buy a yacht that best suits your needs **Abigail — GRAND BANKS** from our catalogue. Presently, at Shestakov Yacht Sales Inc., we have a wide variety of yachts available on our sale's list. We also work in close contact with all the big yacht manufacturers from all over the world.

If you would like to buy a yacht **Abigail — GRAND BANKS** or would like help answering any questions concerning purchasing, selling or chartering a yacht, please call **+1(954)274-4435**

TABLE OF CONTENTS

TABLE OF CONTENTS	2
SPECIFICATIONS	5
Overview	5
Basic Information	6
Dimensions	6
Speed, Capacities and Weight	6
Accommodations	6
Hull and Deck Information	6
Engine Information	7
DETAILED INFORMATION	8
Vessel Walkthrough	8
Salon	8
Galley	8
Desk And Dressing Area	9
Master Stateroom Forward	9
Lower Helm	9
Flybridge Helm	10
Flybridge	10
Deck	10
Mechanical	11
Electrical	11
Broker's Remarks	11
Disclaimer	12
Exclusions	12
Disclaimer	12
PHOTOS	13
Salon	13
Galley	13

Master Stateroom	13
Flybridge	13
Lower Helm	13
Salon	13
Salon	14
Galley	14
Galley	14
Galley Counter	14
Counter Extension	14
Galley & Salon	14
Master Stateroom	15
Master Stateroom	15
Master Stateroom	15
Master Head & Shower	15
Master Head & Shower	16
Desk	16
Desk	16
Dressing Area	16
Flybridge	17
Flybridge	17
Flybridge	17
Flybridge	17
Flybridge	17
Flybridge	17
Teak Cockpit	18
Teak Side Deck Port	18
Teak Side Deck Starboard	18
Single Lugger L688D 130 HP	18
Single Lugger L688D 130 HP	18

Northern Lights Generator	18
Northern Lights Generator Sound Shield	19
Dual Racors & Genset Racor	19
Fuel Manifold	19
Starboard Fuel Tank & Fuel Manifold	19
Fuel Manifold, AC Compressor, Vacuflush, Genset	19
Starboard Fuel Tank	19
Port Fuel Tank	20
Port Fuel	20
Remote AC & Port Fuel Tank	20
Profile	20
Profile	20
Profile	20
Profile	21
Profile	21
CONTACTS	22
Contact details	22
Telephones	22
Office hours	22
Address	22

SPECIFICATIONS

Overview

Perfect Long Range Trawler for

The Cruising Couple

Beautifully Maintained

Galley Up

Single Stateroom w/Office

- **Single Lugger L668D 130 HP 2710 Hrs**
- **Northern Lights 6 kw Generator 1218 Hrs**
- **Bow Thruster**
- **Xantrex Inverter**
- **Furuno Radar**
- **Garmin 740S GPS Plotter – Lower Helm**
- **Standard Horizon 300i GPD Plotter - Flybridge**
- **Simrad Autopilot**
- **Simrad Robertson Depth/Speed/Log**
- **Icom VHF**
- **Achilles 9.2 Dinghy w/ Mercury 3.3HP OB**
- **Master Stateroom Forward**
- **Unique Custom Desk/Dressing Area**
- **Washer/Dryer**
- **Head w/Separate Shower**
- **Galley Up**
- **Grunert Hodling Plate Refrigerator & Freezer**
- **(2) Remote Reverse Cycle Heat & AC**
- **Custom Cabinets**

Abigail has completed 3 round trips between SW Florida & Cape Cod since the spring of 2013. After spending previous summers on the Cape, she now lies in Ft Myers, FL. She is a dependable, comfortable, economical and capable cruiser ready to take you on your next adventure. The renowned Lugger L668D single diesel and 400 gallon fuel tanks will provide nearly 1,000 mile range. She looks and feels much larger than 36'. She has been lovingly maintained and will not disappoint. Call for an appointment to see this beautiful and unique yacht!

Basic Information

Category: Trawler

Sub Category: Europa

Model Year: 1998

Year Built: 1998

Country: United States

Dimensions

LOA: 36' 0" (10.97m)

Beam: 12' 8" (3.86m)

Min Draft: 4' 0" (1.22m)

Speed, Capacities and Weight

Displacement: 27000 Pounds

Water Capacity: 140 Gallons

Holding Tank: 30 Gallons

Fuel Capacity: 400 Gallons

Accommodations

Total Cabins: 1

Total Heads: 1

Hull and Deck Information

Hull Material: Fiberglass

Deck Material: Fiberglass Sandwich

Hull Configuration: Modified Deep Vee

Hull Color: White

Engine Information

Engines: 1

Manufacturer: Luger

Model: L668D

Engine Type: Inboard

Fuel Type: Diesel

DETAILED INFORMATION

Vessel Walkthrough

“Abigail” is a rare Europa style 36 Grand Banks. She looks and feels much larger than 36'. Her lush teak interior is finely finished throughout in the Grand Banks tradition with satin varnish. The cabin sole is varnished teak parquet throughout. The spacious aft deck, comfortable dinette, and galley-up with custom cabinets are perfect for cruising, living aboard and entertaining. The unique and functional layout below features a desk and dressing area with generous storage and a washer/dryer. The master stateroom is forward. The head features a separate shower with teak grating. Fly bridge overhangs provide shade on the spacious aft deck and wide side decks. There is a fully functional lower helm with side door and a spacious fly bridge with electronics, bimini, built in seating, folding chairs, and dinghy cradle.

Salon

The Salon is bright and cheerful with direct access to the aft deck, the convenient “Up” galley, and the lower helm with the door to the side deck located forward to starboard.

- L-Shaped Dinette to Port
- Drop Leaf Teak Table
- Straight Settee to Starboard
- 17” Insignia HD TV/DVD
- HD TV Antenna
- Sony Stereo
- MarineAir Reverse Cycle Remote A/C
- Lower Helm and Side Door Forward to Starboard

Galley

The galley “Up” is functional and attractive. The large freezer and refrigerator boxes are ideal for cruising. The propane stove minimizes the need for the generator when anchored. Custom cabinetry provides lots of extra storage and separation from the dinette.

- Custom Built-In Cabinets
- Grunert Holding Plate Refrigerator and Freezer Boxes
- Panasonic Microwave
- 3 Burner Princess Propane Stove
- Corian Counter Top
- Stainless Steel Sink
- Exhaust Fan
- Abundant Teak Storage Lockers

Desk And Dressing Area

Down the steps from the galley/helm area to port is the unique dressing/desk area. This is the most desirable layout for the cruising couple. It provides an office, a dressing area, the washer/dryer, and lots of convenient storage.

- Custom Built-in Desk
- Large Hanging Locker
- Generous Storage
- Book Shelves
- (2) Stainless Steel Opening Ports
- Deck Hatch
- Washer/Dryer

Master Stateroom Forward

- Large V-Berth with Filler
- Reverse Cycle A/C & Heat Controls
- (2) Stainless Steel Opening Ports
- (2) Hanging Lockers
- Foredeck Hatch

Lower Helm

The lower helm offers great visibility and electronics for operation in bad weather and quick access to the side deck when docking or anchoring.

- Wood Spoke Wheel
- Flip-up Helm Seat
- Custom Teak Electronics Box
- Vetus Bow Thruster
- Garmin 740S
- Furuno 1832 36 Mile Radar
- Simrad Robertson AP300X Auto Pilot
- Simrad IS11 Speed/Log/Depth
- Icom M127 VHF
- Xantrax Battery Monitor System
- Windlass Control
- Morse Controls
- Ritchie Compass
- Engine Instrumentation
- Rudder Angle Indicator

Flybridge Helm

- Wood Spoke Wheel
- Simrad AP 20 Autopilot
- Simrad Robertson IS20 Wind Instrument
- Speed/Log/Depth
- Vetus Bow Thruster
- Windlass Control
- Morse Controls
- Icom IC-M59 VHF
- Ritchie Powerdamp 5" Compass
- Bimini
- Fore and Aft, Port & Starboard Seating

Flybridge

- Bimini
- Fore and Aft, Port & Starboard Seating
- Folding Chairs
- Propane Storage
- Storage
- Mast & Boom w/Dinghy Hoist
- Spreader Lights
- Achilles 9.2 Dinghy
- Mercury 3.3 HP OB

Deck

Wide side decks with fly bridge over hangs and a comfortable aft deck with overhang provide shade and comfort as well as convenient line handling. Teak decking only under the overhangs is in excellent shape due to proper care. Cockpit (aft deck) lazarettes provide lots of useful storage.

- Wide Side Decks w/ Overhangs
- Shaded Aft Deck
- Teak Decking on Aft and Side Decks (Excellent Condition)
- Two-Tone Non-Skid Decks Forward
- Teak Swim Platform w/Ladder
- Stainless Steel Hand Rails w/ Gates
- Stainless Steel Cabin House Hand Rails
- Lofrans Windlass w/2 Gypsies
- Salt Water Washdown

- Foredeck, Upper & Lower Helm Windlass Controls
- Bow & Stern Shore Power, TV, & Phone Connections

Mechanical

The engine room is clean and there is plenty of room to work on all equipment. This is a huge advantage of the single engine configuration! Additional sound insulation was originally installed as a factory option.

- Single John Deere Luger L668D 130 HP w/2710 Hours
- Northern Lights 6KW Generator w/1218 Hours (new in 2006)
- Twin Disc Transmission Factory Rebuilt 2013
- Vetus Bow Thruster with Upper and Lower Helm Controls
- Dual Racor 900 Fuel Filters
- Racor Generator Fuel Filter
- Fireboy Automatic Fire System
- PSS Dripless Shaft Seal
- Monel Shaft
- Additional Factory Installed Engine Room Insulation

Electrical

- Northern Lights 6KW Generator w/1218 Hours (New in 2006)
- Xantrex Inverter
- Xantrex Battery Monitor System
- 50 AMP 220 Volt Shore Power System
- Bow & Stern Shore Power Connections
- Bow & Stern TV & Telephone Connections
- (4) 12 Volt Batteries
- Ample Power High-Output Alternator
- Next Step Voltage Regulator
- Bonding System

Broker's Remarks

Abigail is a beautiful boat in every regard. Cosmetically, mechanically, and structurally she is in excellent condition from stem to stern. She has been well loved by her current & previous owners. She was in fresh water until 2006. Her second owner enjoyed many days cruising her in the Bahamas and South Florida. Her current owners have completed 3 round trips between SW Florida and Cape Cod. Now they are ready to let her next owner continue in the cruising tradition. Rarely is such a fine cruising boat available in such literal "Turn Key" condition. Bring your duffle bag and some groceries and she is ready to take you to many great destinations!

Disclaimer

The Company offers the details of this vessel in good faith but cannot guarantee or warrant the accuracy of this information nor warrant the condition of the vessel. A buyer should instruct his agents, or his surveyors, to investigate such details as the buyer desires validated. This vessel is offered subject to prior sale, price change, or withdrawal without notice.

Exclusions

Owner's personal belongings.

Disclaimer

The Company offers the details of this vessel or yacht in good faith but cannot guarantee or warrant the accuracy of this information nor warrant the condition of the vessel. A buyer should instruct his representatives, agents, or his surveyors, to investigate such details as the buyer desires validated. This vessel or yacht is offered subject to prior sale, price change, or withdrawal without notice.

PHOTOS

Salon



Galley



Master Stateroom



Flybridge



Lower Helm



Salon



Salon



Galley



Galley



Galley Counter



Counter Extension



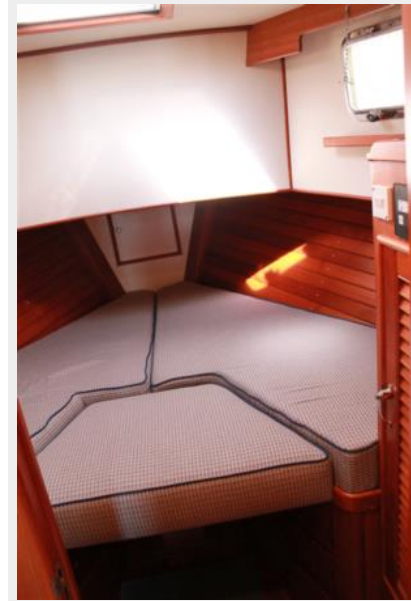
Galley & Salon



Master Stateroom



Master Stateroom



Master Stateroom



Master Head & Shower



Master Head & Shower



Desk



Desk



Dressing Area



Flybridge



Flybridge



Flybridge



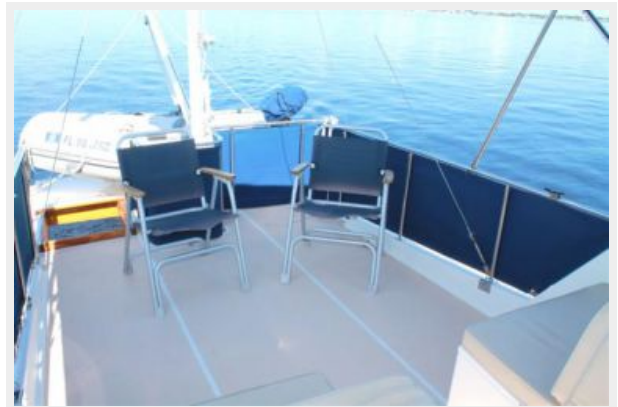
Flybridge



Flybridge



Flybridge



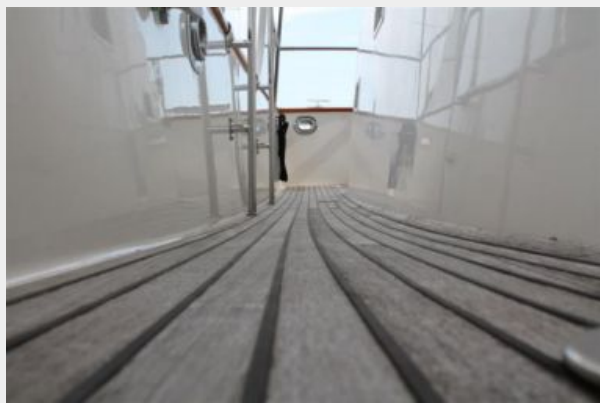
Teak Cockpit



Teak Side Deck Port



Teak Side Deck Starboard



Single Lugger L688D 130 HP



Single Lugger L688D 130 HP



Northern Lights Generator



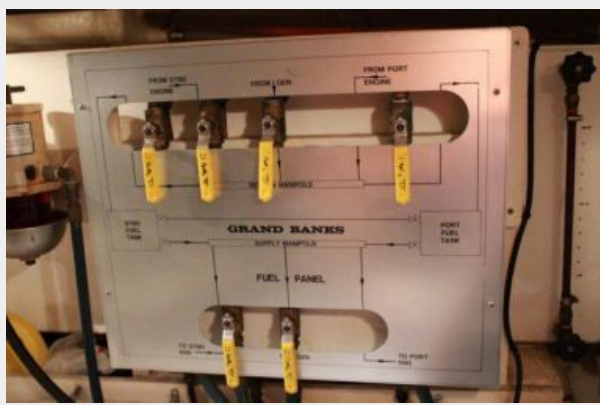
Northern Lights Generator Sound Shield



Dual Racors & Genset Racor



Fuel Manifold



Starboard Fuel Tank & Fuel Manifold



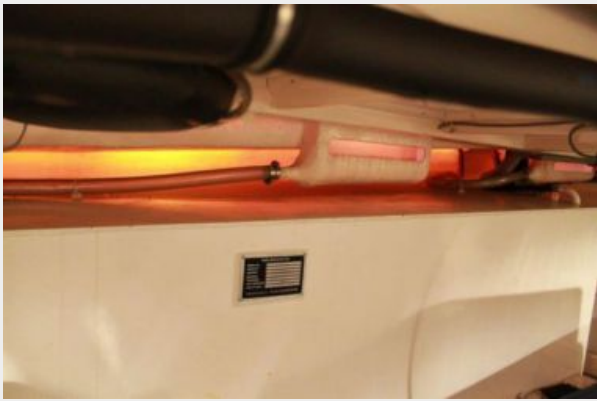
Starboard Fuel Tank



Fuel Manifold, AC Compressor, Vacuflush, Genset



Port Fuel Tank



Port Fuel



Remote AC & Port Fuel Tank



Profile



Profile



Profile



Profile



Profile



CONTACTS

Andrey Shestakov, leading yacht broker of the sales department of Shestakov Yacht Sales Inc. Shestakov Yacht Sales Inc., the official representative of the Miami/Fort Lauderdale FL headquarters.

Contact details

Email: andrey@shestakovyachtsales.com

Web: shestakovyachtsales.com/en/

Telephones

USA: +1(954)274-4435

Office hours

Monday – Saturday: **9:00 - 21:00** EDT

Sunday: **closed**

Address



Harbour Towne Marina, 850 NE 3rd St,
STE 213, Dania, FL 33004