

PLAY PEN — SEA RAY



Builder: SEA RAY

Year Built: 1997

Model: Motor Yacht

Price: PRICE ON APPLICATION

Location: United States

LOA: 37' 0" (11.28m)

Beam: 14' 3" (4.34m)

Min Draft: 3' 2" (0.97m)

Cruise Speed: 20 Kts. (23 MPH)

Max Speed: 25 Kts. (29 MPH)

Our experienced yacht broker, Andrey Shestakov, will help you choose and buy a yacht that best suits your needs **Play Pen — SEA RAY** from our catalogue. Presently, at Shestakov Yacht Sales Inc., we have a wide variety of yachts available on our sale's list. We also work in close contact with all the big yacht manufacturers from all over the world.

If you would like to buy a yacht **Play Pen — SEA RAY** or would like help answering any questions concerning purchasing, selling or chartering a yacht, please call **+1(954)274-4435**

TABLE OF CONTENTS

TABLE OF CONTENTS	2
SPECIFICATIONS	3
Overview	3
Basic Information	3
Dimensions	3
Speed, Capacities and Weight	3
Accommodations	4
Hull and Deck Information	4
Engine Information	4
PHOTOS	5
CONTACTS	17
Contact details	17
Telephones	17
Office hours	17
Address	17

SPECIFICATIONS

Overview

\$20,000.00 PRICE REDUCTION. DEATH IN FAMILY FORCES SALE! Known for her sporty styling and roomy interior, the Sea Ray 370 Aft Cabin is built on a fully cored hull with an extended swim platform, a wide 14'3" beam gave Sea Ray engineers a large interior to work with in designing the 370 Aft Cabin. The accommodations are impressive with two large staterooms (each with a double berth), dinette, full-service galley with Corian countertops, and a wideopen salon with built-in media center and seating for a small crowd. A large L-shaped sofa to port converts to a bed at the push of a button, and an accessory room opposite the galley has space for a washer/dryer. The Sea Ray 370 covered aft deck came standard with a wet bar and solid wing doors. On the engine room, accessed from a gas-assist hatch in the salon sole. is a nice fit, and the side decks are all the way forward. Mercruiser 380 hp engines cruise at 20 knots. High 20s top end. Only 400 Hours.

Basic Information

Category: Motor Yacht

Sub Category: Aft Cabin

Model Year: 1997

Year Built: 1997

Country: United States

Vessel Top: Bimini Top

Fly Bridge: Yes

Dimensions

LOA: 37' 0" (11.28m)

Beam: 14' 3" (4.34m)

Min Draft: 3' 2" (0.97m)

MFG Length: 38' 2" (11.63m)

Speed, Capacities and Weight

Cruise Speed: 20 Kts. (23 MPH)

Max Speed: 25 Kts. (29 MPH)

Displacement: 23800 Pounds

Water Capacity: 100 Gallons

Holding Tank: 54 Gallons

Fuel Capacity: 300 Gallons

Accommodations

Total Cabins: 3

Total Heads: 2

Hull and Deck Information

Hull Material: Fiberglass

Hull Designer: Sea Ray

Engine Information

Engines: 2

Manufacturer: Mercruiser

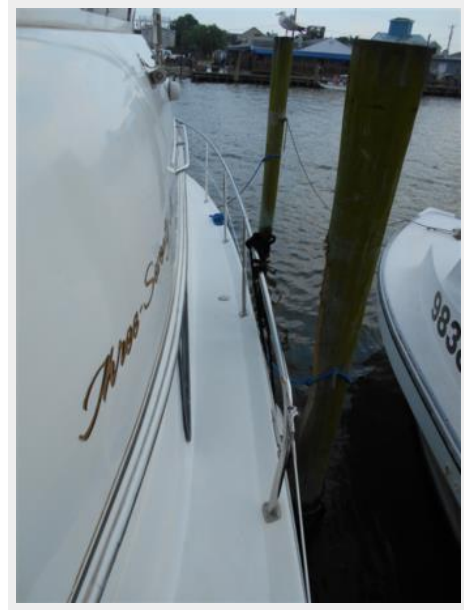
Model: Horizon

Engine Type: Inboard

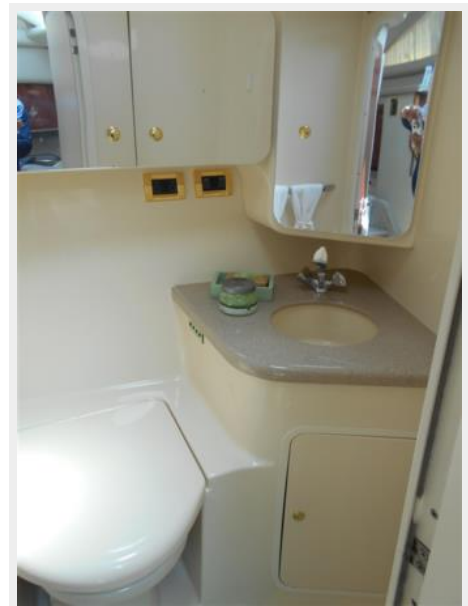
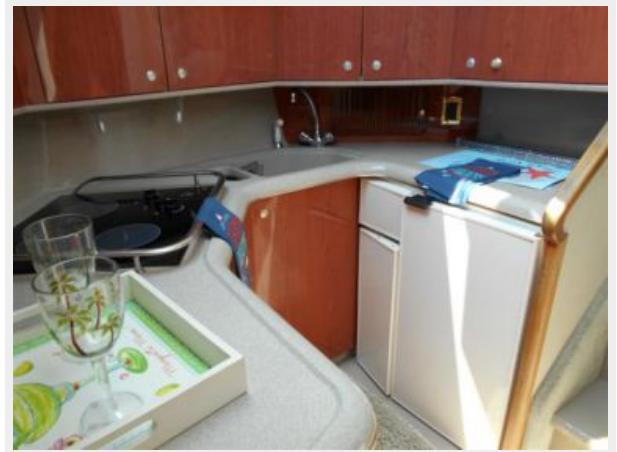
Fuel Type: Gas/Petrol

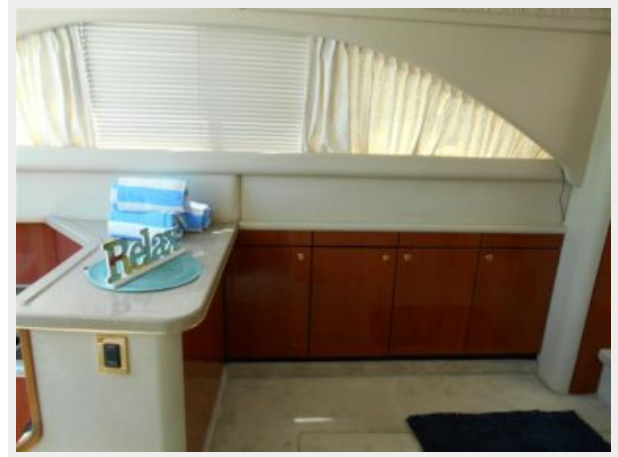
PHOTOS

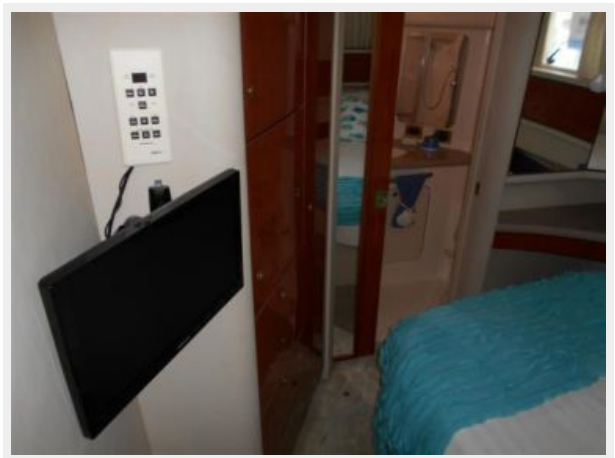


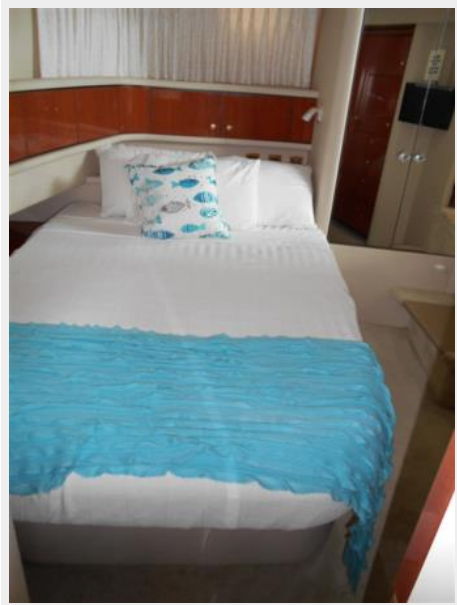








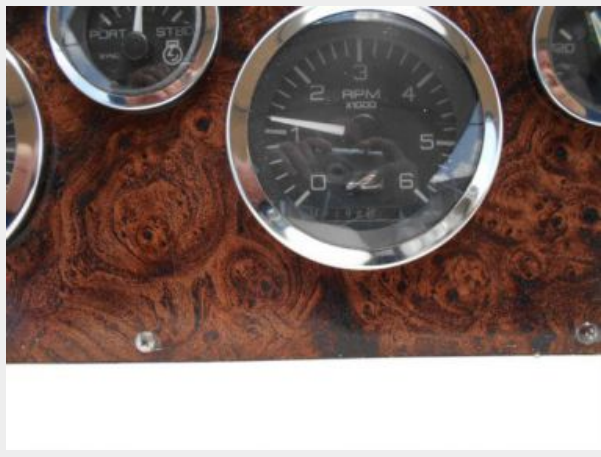


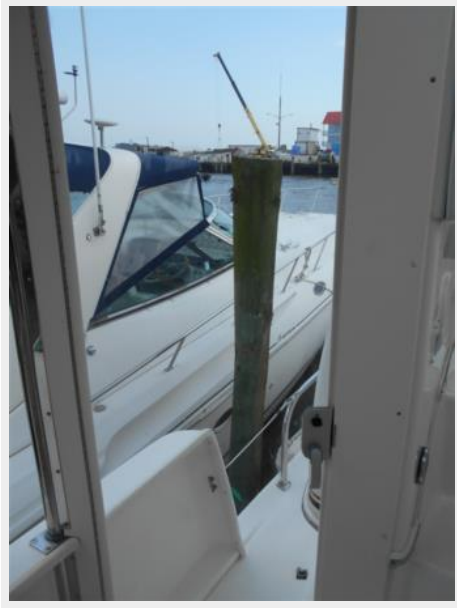












CONTACTS

Andrey Shestakov, leading yacht broker of the sales department of Shestakov Yacht Sales Inc. Shestakov Yacht Sales Inc., the official representative of the Miami/Fort Lauderdale FL headquarters.

Contact details

Email: andrey@shestakovyachtsales.com

Web: shestakovyachtsales.com/en/

Telephones

USA: +1(954)274-4435

Office hours

Monday – Saturday: **9:00 - 21:00** EDT

Sunday: **closed**

Address



Harbour Towne Marina, 850 NE 3rd St,
STE 213, Dania, FL 33004