

HOEK DESIGN EAGLE 54 — LEONARD SHIPYARD



Builder: LEONARD SHIPYARD

Year Built: 2017

Model: Classic Yacht

Price: PRICE ON APPLICATION

Location: Netherlands

LOA: 54' 8" (16.64m)

Beam: 10' 9" (3.27m)

Min Draft: 9' 3" (2.80m)

Max Draft: 9' 3" (2.80m)

Our experienced yacht broker, Andrey Shestakov, will help you choose and buy a yacht that best suits your needs Hoek Design Eagle 54 — LEONARD SHIPYARD from our catalogue. Presently, at Shestakov Yacht Sales Inc., we have a wide variety of yachts available on our sale's list. We also work in close contact with all the big yacht manufacturers from all over the world.

If you would like to buy a yacht Hoek Design Eagle 54 — LEONARD SHIPYARD or would like help answering any questions concerning purchasing, selling or chartering a yacht, please call +1(954)274-4435

TABLE OF CONTENTS

TABLE OF CONTENTS	2
SPECIFICATIONS	4
Overview	4
Basic Information	4
Dimensions	5
Speed, Capacities and Weight	5
Accommodations	5
Hull and Deck Information	5
Engine Information	5
PHOTOS	6
Eagle 54	6
Eagle 54	6
Eagle 54	6
Eagle 54	6
Eagle 54	6
Eagle 54	6
Eagle 54	7
Eagle 54	7
Eagle 54	7
Eagle 54	7
Eagle 54	7
Eagle 54	7
Eagle 54	8
CONTACTS	9
Contact details	9
Telephones	9
Office hours	9
Address	9

SPECIFICATIONS

Overview

The Eagle 54 design is the elegant result of the collaboration between Hoek Design and the builder Leonardo Yachts. The classic lines of the Eagle 54 are combined with contemporary features and a modern underwater body.

The yacht has been designed with shorthanded cruising in mind. With halyards and the jib sheets running below the teak deck the Eagle 54 will have an ultra sleek deck layout. For ease of handling the jib winches are positioned within reach of the helmsman. The standard rigging is aluminium, carbon spars are option as is an in-boom furling mainsail. An extensive hydraulic package will allow you to adjust the jib halyard tension, jib car position, vang and back-stay position all from the helm.

Sailing an Eagle should be uncomplicated fun. And with her only 9 tons displacement the Eagle 54 will turn heads not only by looking beautiful but also because of her sailing characteristics.

There are two interior options, one with the galley and the heads located near the cabin entrance and the other with the heads and galley located more forward. This second layout features two additional pilot berths. Both layouts feature a grand saloon with the owners berth located near the bow. As the 54 will be a semi custom boat owners can decide upon the interior styling. Standard the interior is bright white with beautiful crafted teak joinery details.

The Eagle 54 is being built in series and sales are represented by Hoek Brokerage.

The standard price as per elaborate specification is starting from € 825.000 (ex VAT).

For more details and information please download the brochure or inquire at .

Production time is approx 9 months from commencement.

With kind regards,

Hoek Brokerage

Basic Information

Category: Classic Yacht

Sub Category: Daysailer

Model Year: 2017

Year Built: 2017

Country: Netherlands

Dimensions

LOA: 54' 8" (16.64m)

Beam: 10' 9" (3.27m)

Min Draft: 9' 3" (2.80m)

Max Draft: 9' 3" (2.80m)

Clearance: 66' 8" (20.30m)

Speed, Capacities and Weight

Displacement: 19841.60358 Pounds

Accommodations

Total Cabins: 1

Hull and Deck Information

Hull Material: Epoxy Composite

Hull Color: B

Engine Information

Manufacturer: Yanmar

PHOTOS

Eagle 54



Eagle 54



Eagle 54



Eagle 54



Eagle 54



Eagle 54



Eagle 54



Eagle 54



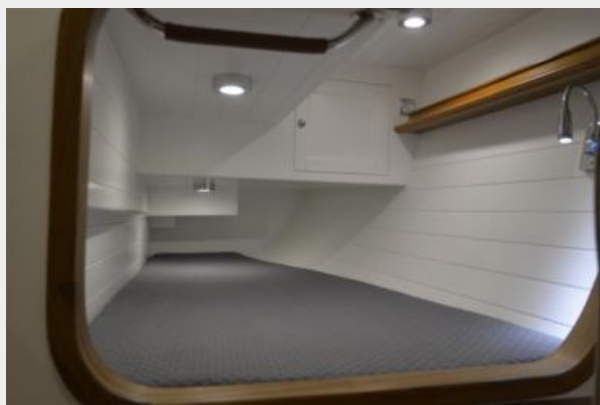
Eagle 54



Eagle 54



Eagle 54



Eagle 54



Eagle 54



CONTACTS

Andrey Shestakov, leading yacht broker of the sales department of Shestakov Yacht Sales Inc. Shestakov Yacht Sales Inc., the official representative of the Miami/Fort Lauderdale FL headquarters.

Contact details

Email: andrey@shestakovyachtsales.com

Web: shestakovyachtsales.com/en/

Telephones

USA: +1(954)274-4435

Office hours

Monday – Saturday: **9:00 - 21:00** EDT

Sunday: **closed**

Address



Harbour Towne Marina, 850 NE 3rd St,
STE 213, Dania, FL 33004