

BORNE FREE — CONTEST



Builder: CONTEST

Year Built: 1983

Model: Center Cockpit

Price: PRICE ON APPLICATION

Location: United States

LOA: 42' 0" (12.80m)

Beam: 12' 6" (3.81m)

Max Draft: 6' 1" (1.85m)

Our experienced yacht broker, Andrey Shestakov, will help you choose and buy a yacht that best suits your needs **Borne Free — CONTEST** from our catalogue. Presently, at Shestakov Yacht Sales Inc., we have a wide variety of yachts available on our sale's list. We also work in close contact with all the big yacht manufacturers from all over the world.

If you would like to buy a yacht **Borne Free — CONTEST** or would like help answering any questions concerning purchasing, selling or chartering a yacht, please call **+1(954)274-4435**

TABLE OF CONTENTS

TABLE OF CONTENTS	2
SPECIFICATIONS	3
Overview	3
Basic Information	9
Dimensions	9
Speed, Capacities and Weight	9
Accommodations	9
Hull and Deck Information	9
Engine Information	10
PHOTOS	11
CONTACTS	16
Contact details	16
Telephones	16
Office hours	16
Address	16

SPECIFICATIONS

Overview

Almost Completely Refitted Over Past 5 Years.

Loaded With Features and Equipment that

Make "Borne Free" an Ideal Long Range Cruiser.

This venerable blue water cruiser was built in Holland by Conyplex Marine and designed by Dick Zaal. Contest Yachts offer a very high-end build quality, and this center cockpit ketch is no exception. The builder is well known in Europe for their offshore designs that are perfectly suited for long range cruising. All Contest Yachts are built to Lloyds standards.

"Borne Free" is a real head turner with her classic lines and a decadent teak interior. Her balanced sail plan is easy to manage and comfortable in heavy seas.

This handsome ketch has undergone an almost complete restoration over the past 5 years. Her owners have poured their heart and soul into transforming this stunning cruiser into one of the prettiest and best-equipped boats on the market today.

If you are unfamiliar with the Contest brand, their level of quality is similar to that of Sabre Yachts and Hallberg Rassy.

This vessel is loaded with new and upgraded equipment. See the full specs for the complete details.

Highlights Included:

- **200 Gallons of Fresh Water, 90 Gallons Diesel**
- **Yanmar 30HP Diesel, installed in 2004 (1500 hours)**
- **A/C and D/C System Completely Rewired And Replaced in 2014**
- **All New Raymarine Electronics in 2014! (entire list in full specs)**
- **Navy Blue Awlgrip Hull Paint 2012**
- **Two Reverse Cycle Air Conditioners (16,000 and 10,000 BTU)**
- **Teak Decks Removed, and Re-cored With Structural Foam, Painted with Awlgrip (2014)**
- **2000W/100A Freedom Inverter/ Charger**
- **High Output Alternator w/ Spares**
- **(4) Four 8D House Bank (800AH Total)**
- **New 90 Gallon Stainless Fuel Tank**
- **Separate Refrigerator and Freezer**
- **Boat Name Borne Free Specs Keel: Fin Dimensions LOA: 43 ft 9 in Beam: 12 ft 6 in**

LWL: 32 ft 8 in Maximum Draft: 6 ft 1 in Displacement: 24230 lbs Bridge Clearance: 56 ft 0 in Engines Engine 1: Engine Brand: Yanmar Year Built: 2004 Engine Model: 30 Engine Type: Inboard Engine/Fuel Type: Diesel Engine Hours: 1500 Propeller: 2 blade propeller Drive Type: Direct Drive Tanks Fresh Water Tanks: Aluminum (220 Gallons) Fuel Tanks: Stainless steel (94 Gallons) Holding Tanks: (40 Gallons) Accommodations Number of cabins: 3 Number of heads: 2

Accommodations

Entering from the center cockpit companionway, there is a large L-shaped galley with beautiful Corian counters to port, with access to a utility room aft. Opposite the galley, there is a large forward facing navigation station with all new electronics, water and fuel gauges and breaker panels. Walking forward there is a center-line, gimballed, drop leaf teak dining table. There is seating with plenty of locker storage to both port and starboard with room for six. Moving forward there is a large private head with Corian counters and updated fixtures. A v-berth is all the way forward with room to sleep two.

Moving aft from the salon to starboard is a passageway to the master stateroom. The passageway has privacy doors and houses an amazing amount of storage and hanging space. The passageway can also be used as an additional sea berth. Walking all the way aft, you enter the master stateroom with private separate head. The master berth can be converted from a large queen size to a U-shaped seating area for lounging.

Salon/ Dinette

The salon is large and comfortable. The teak and holly flooring throughout the vessel is in excellent condition. The counter weighted, gimbaled center line teak table folds down when not in use. The interior is tastefully upholstered in synthetic naga hide fabric in cream color. The Salon is full air conditioned and bright with plenty of natural light.

- 16000 BTU Air Conditioning in Salon and forward stateroom
- Opening hatch overhead with solar vent
- Indirect LED lighting
- Seahorse Sculpture

Galley/ Utility Room

The galley is simply exquisite. There is a large utility room that is accessed aft of the galley. The utility room houses all of the A/C distribution panels and has a work bench with plenty of storage room for food, sails or tools. Above the utility room is an opening lazarette that accesses the cockpit.

- Custom Corian counters
- Double stainless sink w/ custom burl pattern backsplash

- **Tile backsplash**
- **Hot and cold pressurized water**
- **Norcold front loading A/C or D/C refrigerator**
- **Sea Frost 12V top loading DUAL cold plate freezer w/ digital thermostat.**
- **Eno Mendoza LPG range and oven w/ Corian filler**
- **Paper towel rack**
- **Multiple cabinets and drawers completely stocked with galley ware**
- **A/C outlets**
- **20LB Propane tank**
- **Teak hinged door accessing the utility room**

Navigation Station

The Nav station is opposite the galley and has been beautifully updated.

- **Cushioned seat with ventilated storage underneath**
- **Opening chart table**
- **Two new Blue Seas 12V Panels with room for additional breakers**
- **Raymarine MFD, Wind, Muti Instrument, and VHF speaker**

Passageway and Master Stateroom

The large master stateroom is located all the way aft. The stateroom is accessed via a passageway with privacy doors. The passageway is currently set up as a large hanging locker. If desired, the passageway can be used as an additional sea berth. The passageway also houses an access door to the engine compartment.

The master berth can be converted into a large U-shaped seating and lounging area. Using an insert, the seating area can be made into a large queen sized berth. There is an opening lewmar hatch directly overhead that provides excellent ventilation. The stateroom has its own 10,000 BTU air conditioning as well.

Master Head

The master head is connected to the aft stateroom.

- **Manual Wilcox Crittendon head**
- **Hand-held shower wand**
- **Teak grating with electric shower sump pump**
- **Hot and cold pressurized water**
- **Two towel racks**
- **Plenty of storage lockers**
- **Holding tank with y-valve and macerator**

Forward Stateroom

The v-berth is located all the way forward.

- **Overhead Lewmar hatch**
- **Air conditioned**
- **Folding teak privacy door**

Forward Head

The forward head is finished in beautiful high gloss varnished teak.

- **Wilcox Crittendon manual head**
- **Teak floor grating with shower sump**
- **Custom Corian counter w/ stainless oval sink**
- **Hot and cold pressurized water**
- **Hand wand shower**
- **Two very large storage cabinets to starboard**
- **Large mirror**
- **Additional cabinet storage to port**
- **Holding tank w/ y-valve and macerator**

Electronics

All of the Electronics on board were replaced in 2014. Everything is top of the line.

- **Raymarine E120W Hybrid Touch display at helm (NEW 2014!)**
- **Raymarine E90W Hybrid Touch display at nav station (NEW 2014!)**
- **Raymarine digital 48NM Radar mounted on mizzen mast (NEW 2014!)**
- **Raymarine ST6001 Autopilot (NEW 2014!)**
- **(2) Two Raymarine Ray 240VHF w/ external speaker at nav station and Helm (NEW 2014!)**
- **Raymarine DSM300 Depth module (NEW 2014!)**
- **(2) Two Raymarine ST60 Wind at companionway and nav station (NEW 2014!)**
- **Raymarine Tri-data at nav station (NEW 2014!)**
- **Raymarine Close Hauled display at companionway (NEW 2014!)**
- **Raymarine Depth display at companionway (NEW 2014!)**
- **Raymarine Close Hauled display at companionway (NEW 2014!)**
- **Raymarine Rudder Angle display at companionway (NEW 2014!)**
- **Raymarine boat speed display at companionway (NEW 2014!)**
- **Dual Blue Tooth stereo system with multiple speakers (NEW 2014!)**
- **Flat panel LCD television**
- **Television antenna mounted on mizzen**

Electrical

In 2014 the entire A/C and D/C electrical systems were replaced. This massive \$60k project took several months for a professional to complete.

- **16,000 and 10,000 BTU Cruiseaire reverse cycle air conditioning units**
- **All new a/c and d/c wiring throughout boat**

- (4) Four 8D deep cycle house batteries, 800AH total (NEW 2014)
- Xantrex Freedom SW2012 Inverter/ Charger 2000W Invertor, 100A Charger (NEW 2014!)
- Xantrex remote for Freedom system (NEW 2014!)
- All NEW A/C & D/C distribution panels (NEW 2014!)
- High output alternator
- Spare Balmar alternator w/ external regulator
- Four water tank gauges, and one fuel tank gauge at nav station
- 6-gallon stainless steel hot water heater, AC power and engine heat exchanger
- Hour Meter for Yanmar Diesel
- (5) five automatic bilge pumps w/ panels
- LED Anchor light
- Spreader lights
- Dual 30A inlets
- (2) Two galvanic isolators
- Vetus 12V Windlass w/ foot switches (2006)

Mechanical

- Yanmar 30HP Diesel. Installed in 2004. (1500 hrs)
- Whitlock rod steering w/ pedestal and destroyer wheel
- NEW 90 gallon stainless steel fuel tank (2006)
- (5) Five automatic bilge pumps
- (2) Two manual emergency bilge pumps
- (2) Two shower sump pumps
- Vetus 12V windlass w/ foot switches
- Single lever engine shift and throttle control

Hull and Deck

- Teak decks removed and recored with structural foam (2012)
- Deck painted with Awlgrip and non-skid (2012)
- Hull painted with Awlgrip Navy Blue (2012)
- Solid Fiberglass hull- No core
- All deck fills replaced with Stainless steel models
- Skeg hung rudder
- (4) four opening deck hatches
- West Marine propane BBQ
- Owner reports that blisters have never been present on the hull
- Folding teak cockpit table
- Teak slats in cockpit floor and seating
- Windshield constructed of safety glass

Sails and Rigging

- Sunbrella Bimini in great condition (NEW 2014)
- Sail covers in good condition
- Fully battened main sail (2007- Good condition)

- **Genoa (2001- Good condition)**
- **Working Jib, (2001- Good condition)**
- **Symmetrical spinnaker**
- **Spinnaker pole**
- **Oversized standing rigging (good condition, replaced approximately year 2000)**
- **Adjustable backstay**
- **Foresail mounted on furling unit**
- **Deck stepped gold anodized aluminum masts**
- **(2) Barlow Australia 32 self tailing main winches**

Items That Do Not Convey

- **West Marine Rigid Dinghy**
- **Tohatsu 5hp Outboard**
- **Personal items**

Brokers Remarks

The photos of the boat under sail show the original flag blue hull, and teak decks. The boat has since been repainted Navy Blue, and the teak decks have been removed. Photos of the boat in the travelift show the new exterior color scheme.

This venerable blue water cruiser was built in Holland by Conyplex Marine and designed by Dick Zaal. Contest Yachts offer a very high-end build quality, and this center cockpit ketch is no exception. The builder is well known in Europe for their offshore designs that are perfectly suited for long range cruising. All Contest Yachts are built to Lloyds standards.

"Borne Free" is a real head turner with her classic lines and a decadent teak interior. Her balanced sail plan is easy to manage and comfortable in heavy seas.

This handsome ketch has undergone an almost complete restoration over the past 5 years. Her owners have poured their heart and soul into transforming this stunning cruiser into one of the prettiest and best-equipped boats on the market today.

If you are unfamiliar with the Contest brand, their level of quality is similar to that of Sabre Yachts and Hallberg Rassy.

This vessel is loaded with new and upgraded equipment. See the full specs for the complete details.

Basic Information

Category: Center Cockpit

Sub Category: Cruising Ketch

Model Year: 1983

Year Built: 1983

Country: United States

Dimensions

LOA: 42' 0" (12.80m)

LWL: 32' 8" (9.96m)

Beam: 12' 6" (3.81m)

Max Draft: 6' 1" (1.85m)

Clearance: 56' 0" (17.07m)

Speed, Capacities and Weight

Displacement: 24230 Pounds

Water Capacity: 220 Gallons

Holding Tank: 40 Gallons

Fuel Capacity: 94 Gallons

Accommodations

Total Cabins: 3

Total Heads: 2

Hull and Deck Information

Hull Material: Fiberglass

Hull Finish: Steel

Engine Information

Engines: 1

Manufacturer: Yanmar

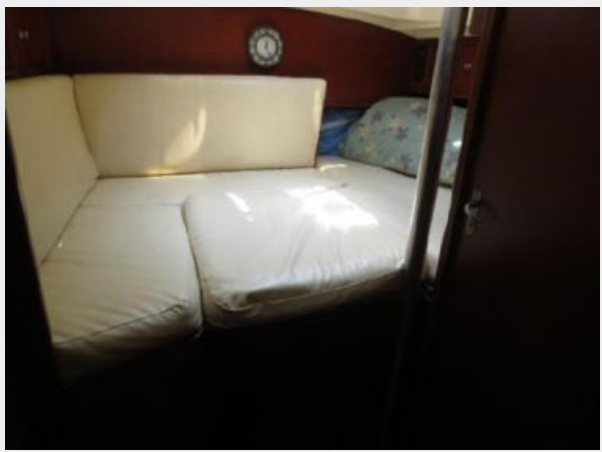
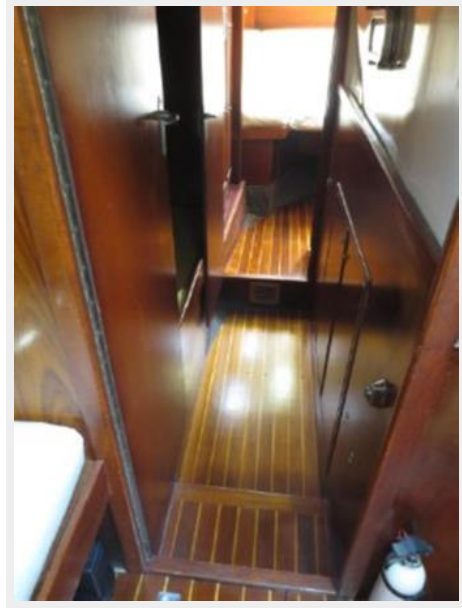
Model: 30

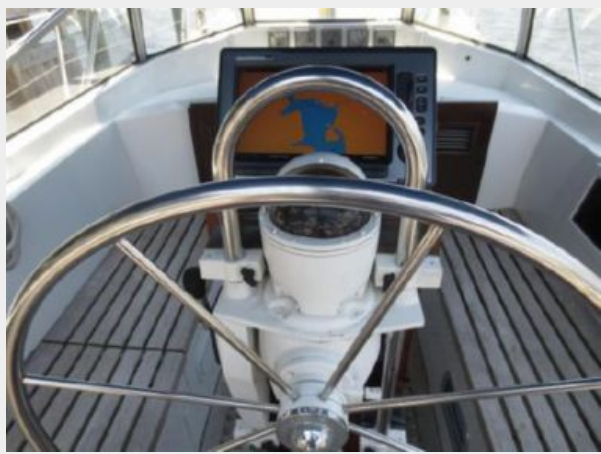
Engine Type: Inboard

Fuel Type: Diesel

PHOTOS











CONTACTS

Andrey Shestakov, leading yacht broker of the sales department of Shestakov Yacht Sales Inc. Shestakov Yacht Sales Inc., the official representative of the Miami/Fort Lauderdale FL headquarters.

Contact details

Email: andrey@shestakovyachtsales.com

Web: shestakovyachtsales.com/en/

Telephones

USA: +1(954)274-4435

Office hours

Monday – Saturday: **9:00 - 21:00** EDT

Sunday: **closed**

Address



Harbour Towne Marina, 850 NE 3rd St,
STE 213, Dania, FL 33004