

BEOWULF — MAINSHIP



Builder: MAINSHIP

LOA: 34' 0" (10.36m)

Year Built: 2006

Model: Trawler

Price: PRICE ON APPLICATION

Location: United States

Our experienced yacht broker, Andrey Shestakov, will help you choose and buy a yacht that best suits your needs **Beowulf — MAINSHIP** from our catalogue. Presently, at Shestakov Yacht Sales Inc., we have a wide variety of yachts available on our sale's list. We also work in close contact with all the big yacht manufacturers from all over the world.

If you would like to buy a yacht **Beowulf — MAINSHIP** or would like help answering any questions concerning purchasing, selling or chartering a yacht, please call **+1(954)274-4435**

TABLE OF CONTENTS

TABLE OF CONTENTS	2
SPECIFICATIONS	4
Overview	4
Basic Information	4
Dimensions	4
Hull and Deck Information	4
Engine Information	4
DETAILED INFORMATION	5
Upper Station Electronics	5
Lower Station Electronics	5
Bridge	5
Galley	5
Lower Helm	5
Inside Equipment	6
Electrical & Engine Room	6
Outside Equipment/Extras	6
Salon	6
Head	7
Master Stateroom	7
Boat Extras	7
Disclaimer	9
Exclusions	9
Disclaimer	9
PHOTOS	10
CONTACTS	15
Contact details	15
Telephones	15
Office hours	15

Address

15

SPECIFICATIONS

Overview

Truly exceptional 34' Mainship. Original owners have absolutely taken wonderful care of this vessel. It shows like new! If you are looking for something special, this is it!

Basic Information

Category: Trawler

Model Year: 2006

Year Built: 2006

Country: United States

Dimensions

LOA: 34' 0" (10.36m)

Hull and Deck Information

Hull Material: Fiberglass

Engine Information

Engines: 1

Manufacturer: Yanmar

Engine Type: Inboard

Fuel Type: Gas/Petrol

DETAILED INFORMATION

Upper Station Electronics

- Raymarine E-80 Radar/Chartplotter
- Raymarine ST60 Depthfinder
- Raymarine Autopilot ST7002
- Raymarine Ray 240VHF/Power volume

Lower Station Electronics

- Raymarine E-80 Radar/Chartplotter
- Raymarine ST60 Depthfinder
- Raymarine Autopilot 6001
- Raymarine 240 VHF

Bridge

- Flybridge Console Cover
- Anchor Windlass Control
- Bow Thruster Control
- Microcommander Control
- Hydraulic Steering
- 3 Helm Chairs with Covers

Galley

- Microwave
- Novacool 112/12v Refrigerator
- Hot & Cold Water, S/S Sink
- Built in Trash Storage
- Princess 2-burner Electric Stove
- Misc Cooking Items
- Teak & Holley Sole
- Toastmaster Oven

Lower Helm

- Trim Tab Control

- Electronic Engine Controls
- Compass
- Halon Controls

Inside Equipment

- Electric Bilge Pump
- Vacu Flush Head
- 2 Unit Heating/ 2 unit Marine Air A/C (in Salon & Master Stateroom)
- Hot water
- Battery Charger
- Sidepower Bow Thruster

Electrical & Engine Room

- Sound Shield
- 8KW Koehler Generator
- (2) Shore Power Inlets
- Shore Power TV and Phone Connection
- 12v/120 Electrical Circuit

- Single Yanmar 370hp w/ 1800 hrs
- Oil Change System

Outside Equipment/Extras

- Swimming Platform w. Ladder & Transom Door
- Cockpit Shower
- Electronic Windlass & Fuel Enclosure
- Custom Bimini (New 2014 Stamoid Material)
- Engine Gauge Covers
- Dripless Shaft Log
- Raw Water Wash Down

Salon

- Swivel Reclining Chair
- Custom Window Coverings (\$3,500.00)
- Corian Countertops
- Carpet

- Drapes on New Door
- Tower Electronics Panel
- Large Sofa & Hide a-bed
- Flat Screen TV
- A/M, F/M, CD Stereo
- Stand Alone Freezer
- Extra Wide Corian Countertop

Head

- Large Stall Shower
- Corian Countertops
- Custom Mirror
- Vacu Flush Head
- Teak & Holly Sole
- Door to Hallway & Separate Door to Master Stateroom

Master Stateroom

- Queen Island Bed w/ Custom Mattress
- Large Cherry Hanging Locker
- Good Storage
- Hatch & (2) Ports

Boat Extras

Main Salon:

- Digital TV plus over-the-air antenna and cable connection
- 2 Teak book/magazine wall racks
- Wooden 4-drawer dresser
- Portable VHF with charger base
- Ditch bag with emergency items
- 2 Voice-activated headphone communications
- Halogen reading lamp (adjustable)
- Swivel reclining chair (Ultraleather)
- Sand a-lone dual voltage refrigerator/freezer (Engel 22 qt.)
- Ink-jet printer and storage shelf
- Intracoastal Waterway Chartbooks and cruising guides
- Custom-fit dog bed, toy, life jacket (if desired)
- 2 Flat storage baskets attached in salon

- Extra-wide Corian countertop
- Dishware, glassware, silverware, cookware, etc.
- Britta container and filter
- Serving bowls, hand towels, serving tray, etc.
- Toaster Oven
- Blender
- Under sole floor storage
- Stereo receiver and CD player
- Custom window covering (OceanAir \$3,500)
- Under-cabinet lighting and accent lamp
- Larger under-counter refrigerator/freezer
- 12V +110V fans (2 of each = 4 fans)
- Folding Cocktail table
- Bras wall clock (chronometer)
- Under-couch storage bins
- Under-couch life jackets, throw cushion, TV Cable

Forward Cabin:

- Mounted full-length mirror
- Assorted pillows
- Extra bed-side shelf
- Canister vacuum cleaner
- 2,000,000 c.p. portable spotlight

Spares:

- Zincs, belts, filters
- Alternator
- 4 injectors
- Oil Sampling kit
- Infra-red heat measuring device
- Strobe tachometer
- Mechanical tool kit
- Electrical trouble-shooting kit
- Fasteners and other miscellaneous spares

Seakeeping:

- 8 bumpers
- 4 50-foot extra lines
- Extra dock lines
- Extra anchor and rode
- 50-foot water hose
- Boat cleaning equipment

Flybridge:

- Complete new enclosure in 2014 (Stamoid fabric + vinyl/polycarbonate, \$6,300)
- 5 decorative throw pillows
- Complete Chesapeake chartbook

Disclaimer

While we attempt to display current and accurate data, this listing may not reflect the most recent transactions or may contain occasional data entry errors. Selling agent makes no warranties, express or implied, regarding the content or availability of the products described herein. All inventory listed is subject to availability and prior sale. Please consult selling agent for details. Prices are quoted for the USA only and may not include transportation, taxes, or other applicable charges. Photographs may be representative only and may vary somewhat from the actual items offered for sale. We will not be responsible for inaccurate data obtained from our site. Please check with your local dealer to ensure that you have the latest information available. Information on this web site could include technical inaccuracies or typographical errors. Changes may be periodically made to the information or the products herein. Questions or comments regarding these policies may be directed to website hosting agent.

Exclusions

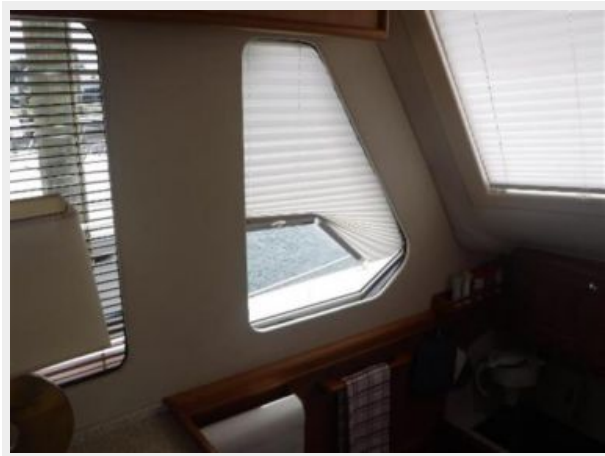
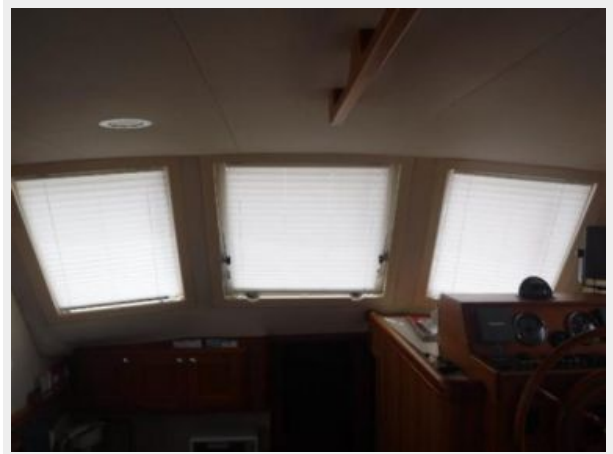
Owner's personal belongings.

Disclaimer

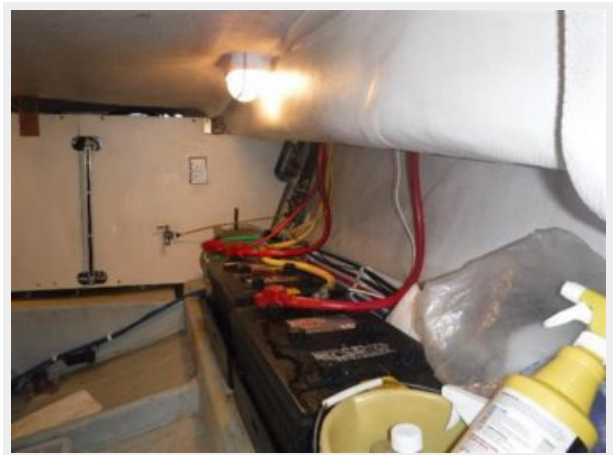
The Company offers the details of this vessel or yacht in good faith but cannot guarantee or warrant the accuracy of this information nor warrant the condition of the vessel. A buyer should instruct his representatives, agents, or his surveyors, to investigate such details as the buyer desires validated. This vessel or yacht is offered subject to prior sale, price change, or withdrawal without notice.

PHOTOS











CONTACTS

Andrey Shestakov, leading yacht broker of the sales department of Shestakov Yacht Sales Inc. Shestakov Yacht Sales Inc., the official representative of the Miami/Fort Lauderdale FL headquarters.

Contact details

Email: andrey@shestakovyachtsales.com

Web: shestakovyachtsales.com/en/

Telephones

USA: +1(954)274-4435

Office hours

Monday – Saturday: **9:00 - 21:00** EDT

Sunday: **closed**

Address



Harbour Towne Marina, 850 NE 3rd St,
STE 213, Dania, FL 33004