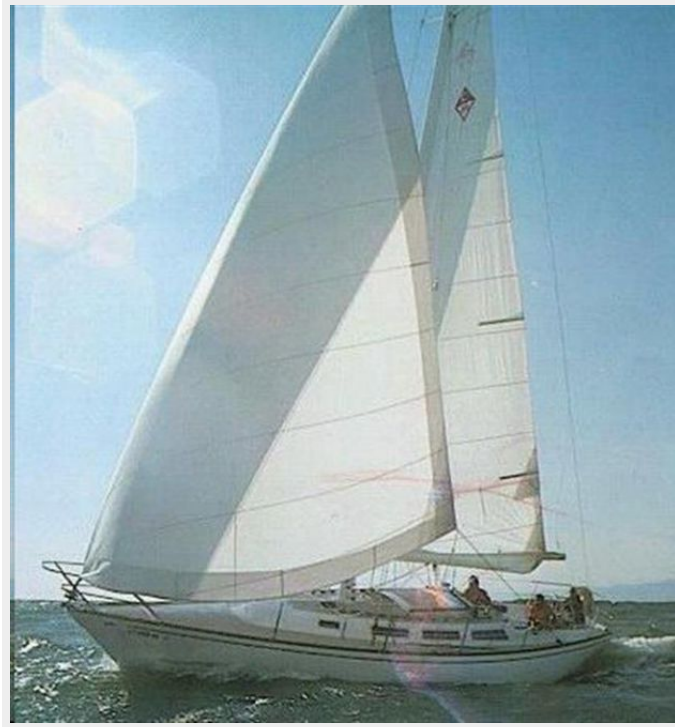


NO NAME — CATALINA



Builder: CATALINA

Year Built: 1984

Model: Sloop

Price: PRICE ON APPLICATION

Location: United States

LOA: 38' 0" (11.58m)

Beam: 11' 0" (3.35m)

Max Draft: 6' 10" (2.08m)

Max Speed: 7 Kts. (8 MPH)

Our experienced yacht broker, Andrey Shestakov, will help you choose and buy a yacht that best suits your needs **No Name — CATALINA** from our catalogue. Presently, at Shestakov Yacht Sales Inc., we have a wide variety of yachts available on our sale's list. We also work in close contact with all the big yacht manufacturers from all over the world.

If you would like to buy a yacht **No Name — CATALINA** or would like help answering any questions concerning purchasing, selling or chartering a yacht, please call **+1(954)274-4435**

TABLE OF CONTENTS

TABLE OF CONTENTS	2
SPECIFICATIONS	3
Overview	3
Basic Information	3
Dimensions	3
Speed, Capacities and Weight	3
Accommodations	3
Hull and Deck Information	3
Engine Information	4
DETAILED INFORMATION	5
Accommodations	5
Electronics & Electrical	5
Deck & Rigging	5
Exclusions	6
Disclaimer	6
PHOTOS	7
CONTACTS	12
Contact details	12
Telephones	12
Office hours	12
Address	12

SPECIFICATIONS

Overview

Catalina 38' Sparkman & Stephens design.1985 Cruiser / Racer !!! The Catalina 38 was a popular model from the prolific Catalina line. The hull mold was slightly modified from the Sparkman and Stephens designed "Yankee 38". These are very good sailing boats and popular for good reason! Willing to entertain offers. Make arrangements to see her today.

Basic Information

Category: Sloop

Model Year: 1984

Year Built: 1984

Country: United States

Dimensions

LOA: 38' 0" (11.58m)

LWL: 30' 3" (9.22m)

Beam: 11' 0" (3.35m)

Max Draft: 6' 10" (2.08m)

Speed, Capacities and Weight

Max Speed: 7 Kts. (8 MPH)

Displacement: 15900 Pounds

Accommodations

Total Cabins: 2

Total Heads: 1

Hull and Deck Information

Hull Material: Fiberglass

Engine Information

Engines: 1

Manufacturer: Universal

Engine Type: Inboard

Fuel Type: Diesel

DETAILED INFORMATION

Accommodations

- Accommodations for 6 persons
- Under forepeak is an enclosed anchor locker
- Under foredeck vee berth double bunk with storage
- Aft of forward berth to port is enclosed marine head, shower and vanity
- Enter main salon with opposing pilot berth/settee and dinette
- Ships galley aft and to port and includes sink, stove, Ice box and storage
- Opposing galley to starboard is navigator's station control panel & chart table
- Aft quarter berth , accessed to starboard is found under cockpit
- Enter the coaming enclosed aft cockpit with seating for (6) persons
- Vessel is wheel steered
- Pressure hot & cold fresh water system

Electronics & Electrical

- Auto helm 3000 steering
- GPS auto steering
- Wind vane auto steering
- 90 amp high capacity alternator and battery charging system
- (4) Batteries 1 for starting and 3 for house

Deck & Rigging

- Auto prop, self-pitching 3 bladed propellers
- (2) Jibe ,(1) Hood 140%,one Ullmer 155% new in 2002
- (2) Main, Hood and Ullmer full batten
- (1) Genaker sock launcher and recovery
- (1) Whisker pole for genaker
- Boomvang
- Two speed Lewmar main wenches, self tailing
- Two speed for genaker
- Two Lewmar halyard wenches
- Hood jib roller furling
- Two anchors, Danforth # 2 heavy forward light aft
- Cockpit canvas cover (in-port sun cover)
- Holding tank vent filter
- Holding tank high-level alarm
- Cockpit cushions

- (2) spare propellers a two and three blade
- Propeller puller 3 Blade, 1' shaft
- Instruction manuals

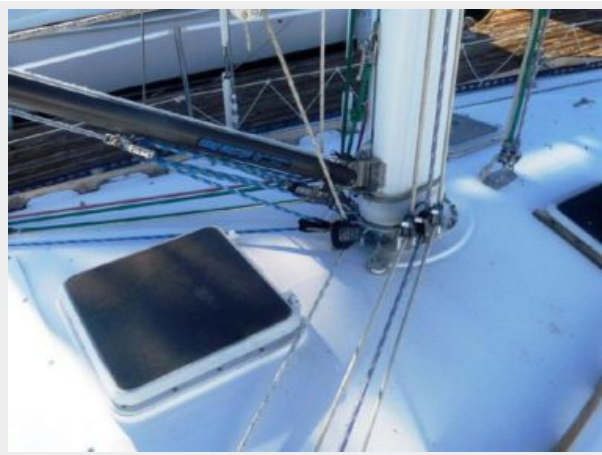
Exclusions

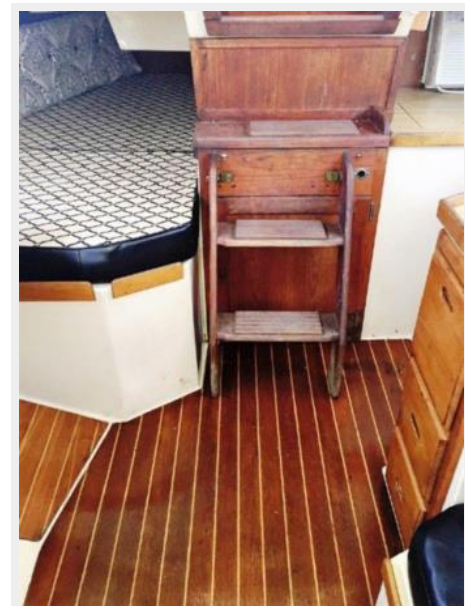
Owner's personal belongings.

Disclaimer

The Company offers the details of this vessel or yacht in good faith but cannot guarantee or warrant the accuracy of this information nor warrant the condition of the vessel. A buyer should instruct his representatives, agents, or his surveyors, to investigate such details as the buyer desires validated. This vessel or yacht is offered subject to prior sale, price change, or withdrawal without notice.

PHOTOS











CONTACTS

Andrey Shestakov, leading yacht broker of the sales department of Shestakov Yacht Sales Inc. Shestakov Yacht Sales Inc., the official representative of the Miami/Fort Lauderdale FL headquarters.

Contact details

Email: **andrey@shestakovyachtsales.com**

Web: shestakovyachtsales.com/en/

Telephones

USA: +1(954)274-4435

Office hours

Monday – Saturday: **9:00 - 21:00** EDT

Sunday: **closed**

Address



Harbour Towne Marina, 850 NE 3rd St,
STE 213, Dania, FL 33004