

73FT 1956 CAMDEN BOAT WORKS DORY YACHT TRAWLER — CAMDEN DORY CO



Builder: CAMDEN DORY CO

LOA: 73' 0" (22.25m)

Year Built: 1956

Model: Trawler

Price: PRICE ON APPLICATION

Location: United States

Our experienced yacht broker, Andrey Shestakov, will help you choose and buy a yacht that best suits your needs. 73ft 1956 Camden Boat Works Dory Yacht Trawler — CAMDEN DORY CO from our catalogue. Presently, at Shestakov Yacht Sales Inc., we have a wide variety of yachts available on our sale's list. We also work in close contact with all the big yacht manufacturers from all over the world.

If you would like to buy a yacht 73ft 1956 Camden Boat Works Dory Yacht Trawler — CAMDEN DORY CO or would like help answering any questions concerning purchasing, selling or chartering a yacht, please call **+1(954)274-4435**

TABLE OF CONTENTS

TABLE OF CONTENTS	2
SPECIFICATIONS	4
Overview	4
Basic Information	5
Dimensions	5
Accommodations	5
Hull and Deck Information	5
Engine Information	5
PHOTOS	6
Stern View	6
Under way	6
Side Deck - Port	6
Side Deck - Starbd	6
Upper Sun Deck	7
Sun Deck -2	7
Sun DEck - Tender Storage	7
Hatch to Main Deck	7
Forward Sun Deck - Smoke Stack	7
Main Deck - Aft	7
Main Deck - Aft Seating	8
Salon - Dinette	8
Salon-2	8
Salon - Fire Place & Entertainment Wall	8
Dinette	8
Stairs to lower Deck	8
Pilot House Seating	9
Electrical panel	9
Pilot House Door to Side Deck	9

Helm	9
Helm-2	9
Helm-3	9
Pilot house Door	10
Helm-4	10
Stove	10
Double Galley Sink	10
Galley Storage	11
Stateroom	11
Closet	11
Bathroom Sink	11
Shower	12
Stateroom-2	12
Second Head	12
Awards	12
at the dock	12
In the Boat yard	12
CONTACTS	22
Contact details	22
Telephones	22
Office hours	22
Address	22

SPECIFICATIONS

Overview

MAJOR PRICE REDUCTION - OWNER MOTIVATED - CALL LISTING BROKER IMMEDIATELY

NOW AVAILABLE FOR SHOWING IN FT LAUDERDALE, FL.

Classis Canoe Stern Trawler - Winner "Best of Show" 2010 - "First Place - People's Choice" 2012

Pilot House - with Large Sun Deck and Tender Storage above Main Cabin

Fully Air Conditioned - 4 Separate Systems - w/Heat Pump

3 Staterooms -2 Crew Cabins - 3 Heads w/Showers - incl.: FORWARD - (2) Crew Cabins and (1) Stateroom- Head & Shower --- AFT-Master Stateroom w/ en-suite bath, plus Guest Stateroom w/Head & Shower

Main Deck incl.: Office Forward - Raised Pilot House - Galley - Main Salon w/Working Fireplace - Dining Area - Semi Enclosed Aft deck Lounge

Large Engine Room Amidships

Custom Woodwork and Cabinetry throughout - incl. Maytag Washer and Dryer

Beautiful Galley with Newer Maytag French Door Refrigerator, Dishwasher, Whirlpool Microwave, Hotpoint 4 Burner Stove/oven

Two Detroit 671 Diesel Engines (low hours) Ganged Together Thru Falk Gearbox to Single Prop Shaft

Full Displacement Hull - Solid Construction - 1 1/2" Philippine Mahogany Carvel Laid Planking on 3"x3" White Oak Frames - 10" on center - 3/4" Fiberglass Shell over the Hull Below Waterline - w/No Delamination (see full specs)

This is one of the finest Classic vessels to be found anywhere. She has been well maintained and upgraded, and shows her true pedigree. This yacht is ideal for live aboard or cruising. Her large owner's cabin is well appointed, and there are 4 additional guest cabins. Her large Salon - Shaded and partially enclosed aft deck, plus upper sundeck - Offer abundant living and entertaining space.

Contact the listing broker for complete details or to make an appointment to see the exceptional Yacht.

Basic Information

Category: Trawler

Model Year: 1956

Year Built: 1956

Country: United States

Dimensions

LOA: 73' 0" (22.25m)

Accommodations

Total Cabins: 5

Hull and Deck Information

Hull Material: Wood

Engine Information

Engines: 2

Manufacturer: Detroit Diesel

Engine Type: Inboard

Fuel Type: Diesel

PHOTOS

Stern View



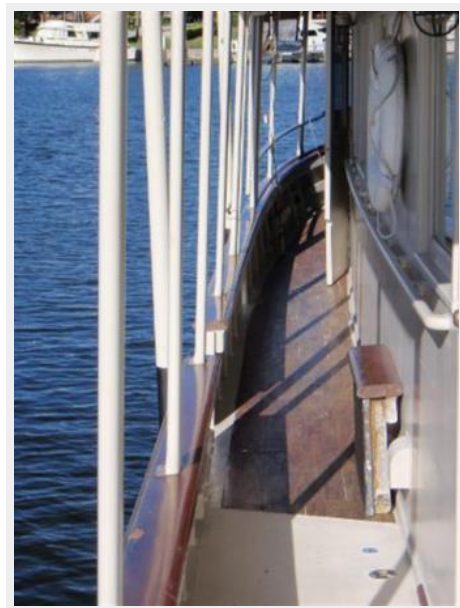
Under way



Side Deck - Port



Side Deck - Starbd



Upper Sun Deck



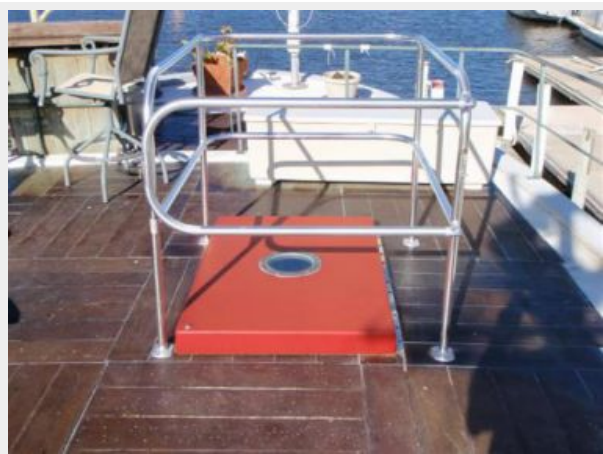
Sun Deck -2



Sun DEck - Tender Storage



Hatch to Main Deck



Forward Sun Deck - Smoke Stack



Main Deck - Aft



Main Deck - Aft Seating



Salon - Dinette



Salon-2



Salon - Fire Place & Entertainment Wall



Dinette



Stairs to lower Deck



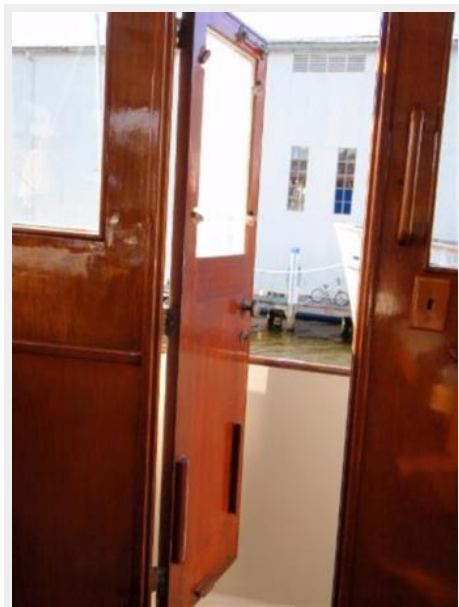
Pilot House Seating



Electrical panel



Pilot House Door to Side Deck



Helm



Helm-2



Helm-3



Pilot Hhouse Door



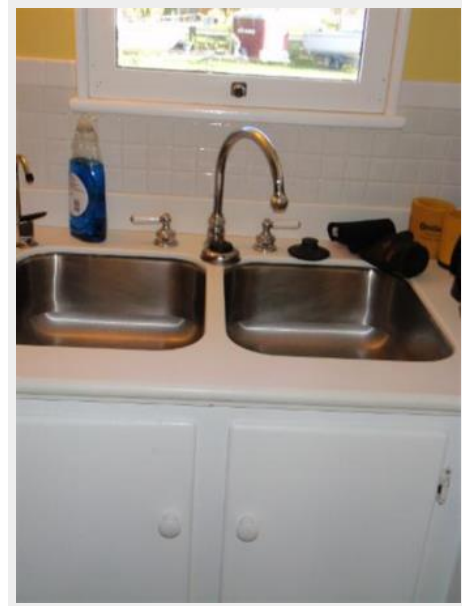
Helm-4



Stove



Double Galley Sink



Galley Storage



Stateroom



Closet



Bathroom Sink



Shower



Stateroom-2



Second Head



Awards



at the dock

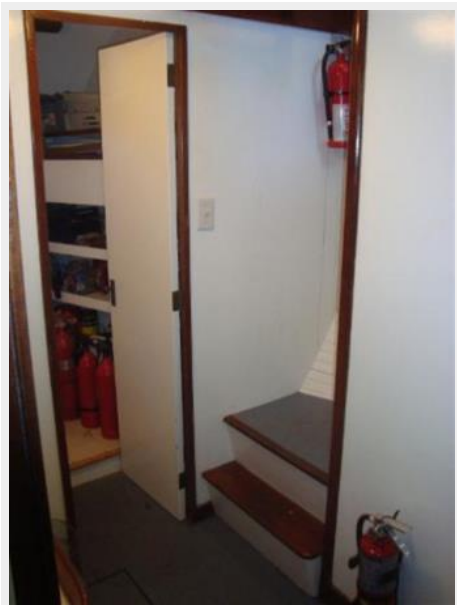


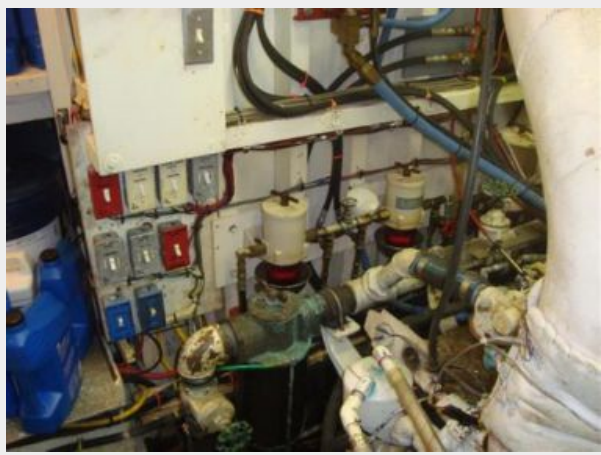
In the Boat yard

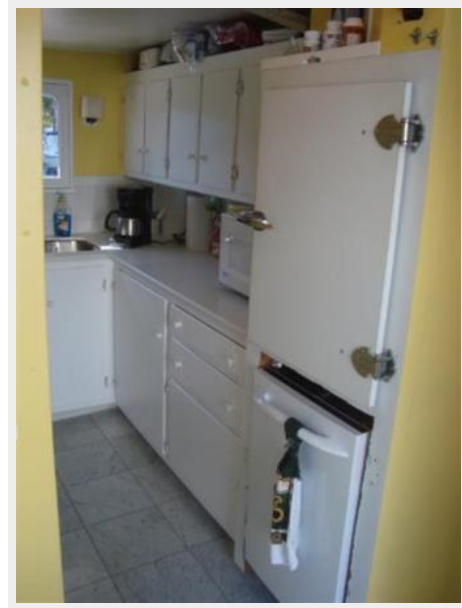
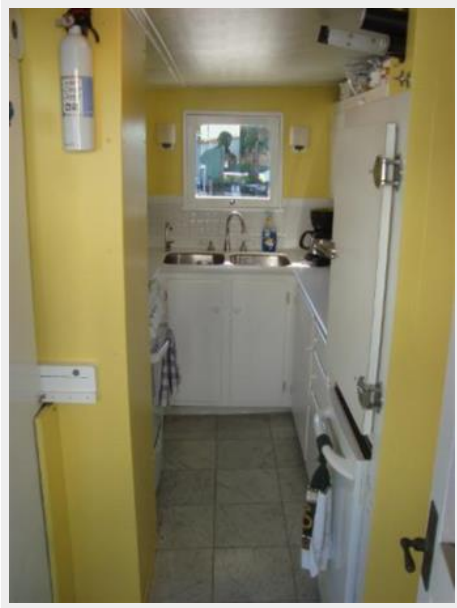




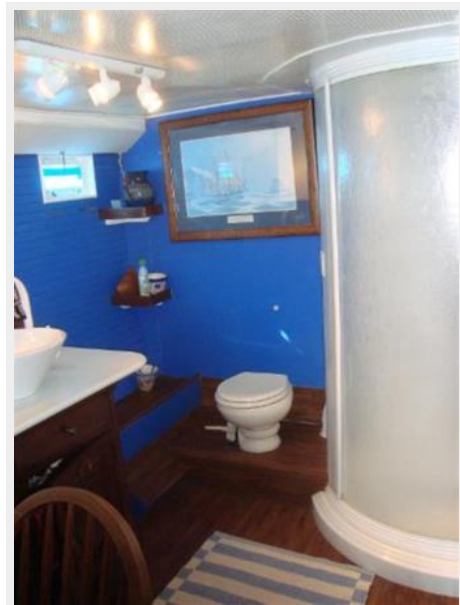
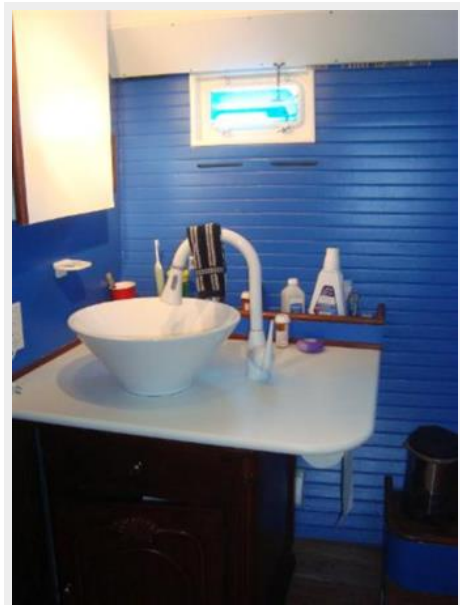




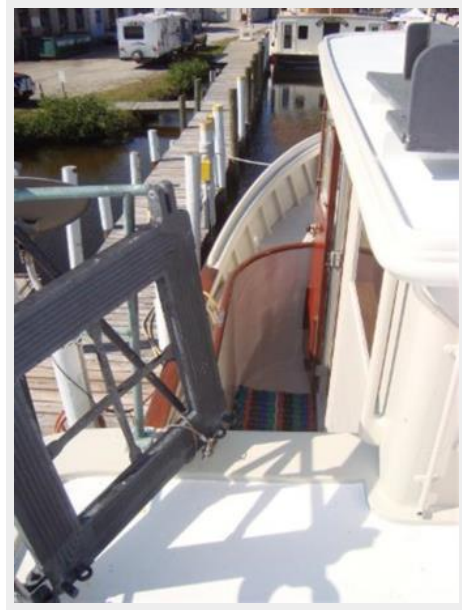












CONTACTS

Andrey Shestakov, leading yacht broker of the sales department of Shestakov Yacht Sales Inc. Shestakov Yacht Sales Inc., the official representative of the Miami/Fort Lauderdale FL headquarters.

Contact details

Email: andrey@shestakovyachtsales.com

Web: shestakovyachtsales.com/en/

Telephones

USA: +1(954)274-4435

Office hours

Monday – Saturday: **9:00 - 21:00** EDT

Sunday: **closed**

Address



Harbour Towne Marina, 850 NE 3rd St,
STE 213, Dania, FL 33004