

## MOTOR YACHT FALCON 115 — FALCON



**Судостроитель:** FALCON

**Год постройки:** 2011

**Модель:** Моторная яхта

**Цена:** **ЦЕНА ЯХТЫ ПО ЗАПРОСУ**

**Местонахождение:** Brazil

**Длина общая:** 115' 0" (35.05m)

**Ширина:** 23' 0" (7.01m)

**Мин. осадка:** 0' 0" (0.00m)

**Макс. осадка:** 0' 0" (0.00m)

**Крейс. скорость:** 23 Kts. (26 MPH)

**Макс. скорость:** 26 Kts. (30 MPH)

Купить **Motor Yacht Falcon 115 — FALCON** а также выбрать подходящую вам яхту из нашего каталога яхт вам поможет опытный яхтенный брокер Андрей Шестаков. На сегодняшний день компания **Shestakov Yacht Sales Inc.** имеет большое количество яхт в собственном списке продаж, а также тесно сотрудничает со всеми крупными яхтенными производителями по всему миру.

Для того чтобы купить яхту **Motor Yacht Falcon 115 — FALCON** а также проконсультироваться по любому вопросу связанному с покупкой, продажей, чартером яхт позвоните по телефону **+7(918)465-66-44**.

# ОГЛАВЛЕНИЕ

ОГЛАВЛЕНИЕ	2
ХАРАКТЕРИСТИКИ	4
Обзор	4
Основная информация	4
Размеры	4
Скорость, вместимость и масса	4
Размещение	5
Корпус и палуба	5
Информация о двигателе	5
ПОДРОБНОЕ ОПИСАНИЕ	6
Description	6
Hull and Main Deck	6
Hull Under the Waterline	7
Flying Bridge	8
Lazarette	9
Engine Room	10
Safety Equipment	12
Wheelhouse	12
Technical Recess UnderThe Wheelhouse	14
Saloon	15
Dining Room	16
Main Deck Bathroom	16
Galley	17
Main Deck Starboard Lobby	17
Owner's Suite	18
Owner's Bathroom	19
Lower Deck Lobby	19
Aft Guest Cabin	19

Aft Guest Cabin Wardrobe	20
Aft Guest Cabin Bathroom	21
Starboard Amidship Guest Cabin	21
Starboard Guest Cabin Bathroom	22
Port Amidship Guest Cabin	22
Port Guest Cabin Bathroom	23
Fore Guest Cabin	24
Fore Guest Bathroom	25
Captain's Cabin	25
Captain's Bathroom	26
Crew Cabin Lobby	26
2 Crew's Cabins (Symmetrical)	27
2 Crew's Bathrooms (Symmetrical)	27
Crew Mess	27
Исключения	28
Отказ от ответственности	28
<b>ФОТОГРАФИИ</b>	<b>30</b>
<b>КОНТАКТЫ</b>	<b>39</b>
Контактная информация	39
Телефоны	39
Время работы	39
Адрес	39

# ХАРАКТЕРИСТИКИ

## Обзор

From the **Italian Falcon Shipyard**, the Falcon 115's is the largest yacht and the flagship in the Falcon range of boats. Accordingly, this super rich displays all the careful craftsmanship of the Falcon shipbuilders as well as a love for the fine finishing and detail refined in years of design. The most sophisticated technology is also utilized in the design and construction of the Falcon 115 private yacht. Comfort and space are the highlights of the Falcon 115's with her 35.50 m in length and 7.30 m in beam, the model guarantees surprising space and versatility where the client can have all the pleasure of personalizing and embellishing all the areas. Powered by 2 MTU of 2285 hp each, the Falcon 115 reaches a maximum speed of 26 knots and a cruising speed of 23 knots at half load, which is pretty good for a yacht of this size.

## Основная информация

**Тип судна:** Моторная яхта

**Модельный год:** 2011

**Год постройки:** 2011

**Страна:** Brazil

**Открытая палуба мостика:** Да

## Размеры

**Длина общая:** 115' 0" (35.05m)

**Ширина:** 23' 0" (7.01m)

**Мин. осадка:** 0' 0" (0.00m)

**Макс. осадка:** 0' 0" (0.00m)

## Скорость, вместимость и масса

**Крейс. скорость:** 23 Kts. (26 MPH)

**Макс. скорость:** 26 Kts. (30 MPH)

**Водоизмещение:** 308647.1668 Pounds

**Чистый вес:** 198 Pounds

**Вместимость воды:** 307 Gallons

**Объем топливного бака:** 1465 Gallons

## Размещение

---

**Всего кают:** 5

**Всего коек:** 5

**Спальные места:** 12

**Всего ком. состава:** 6

**Каюта капитана:** Да

**Каюты экипажа:** 1

**Койки экипажа:** 4

**Спальных мест экипажа:** 4

**Комм. состав экипажа:** 3

## Корпус и палуба

---

**Материал корпуса:** GRP

## Информация о двигателе

---

**Двигатели:** 2

**Производитель:** MTU

**Модель:** 12V 396 TE 94

**Тип двигателя:** Inboard

**Тип топлива:** Diesel

# ПОДРОБНОЕ ОПИСАНИЕ

## Description

From the **Italian Falcon Shipyard**, the Falcon 115's is the largest yacht and the flagship in the Falcon range of boats. Accordingly, this super rich displays all the careful craftsmanship of the Falcon shipbuilders as well as a love for the fine finishing and detail refined in years of design. The most sophisticated technology is also utilized in the design and construction of the Falcon 115 private yacht. Comfort and space are the highlights of the Falcon 115's with her 35.50 m in length and 7.30 m in beam, the model guarantees surprising space and versatility where the client can have all the pleasure of personalizing and embellishing all the areas. Powered by 2 MTU of 2285 hp each, the Falcon 115 reaches a maximum speed of 26 knots and a cruising speed of 23 knots at half load, which is pretty good for a yacht of this size. The yacht is properly maintained and kept in perfect condition with a full time captain and crew.

## Hull and Main Deck

- Handrail and main deck in teak.
- 8 Fore and aft deck-bollards and 2 cleats on the aft platform.
- 6 Stainless steel roller fairleads.
- 6 Side stainless steel fairleads with bollards.
- 2 Electric anchor-winches 5500 watt 380V each with control from bow and flying bridge.
- 2 Stainless steel mooring hawseholes with fender plates for the anchors.
- 2 Chain lockers with check doors.
- 2 High holding power anchors 160 KG each.
- 2 High performance tensile strength 16 - M 192.5 each.
- Stainless steel bow pulpit and fender bar.
- 10 Fenders in stainless steel holders at bow and 4 round fenders.
- Watertight side access door to the engine room.
- Ceiling lights in the aft deck: 14 large ones by Palagi Art. 2000 and 4 small ones by metalstyle.
- 12 Ceiling lights by Palagi Art. 2000 in the gangways.
- 16 Watertight ceiling lights by metalstyle in the superstructure.
- 2 Maneuver searchlights by Palagi Art0 1065/02.
- Platform and underwater light control panel in the washboard port side.
- 3 Fire system controls with safe crash cover in the aft deck.
- 1 Engine room ventilation block control in the washboard port side.
- Stainless steel grills for water discharge in the aft deck.
- 5 Chromium - plated brass air inlets on the superstructure port side and 4 on the starboard side.
- 4 Fire/deck washing inlet.
- 2 Fresh water inlet.

- Sun - Bathing area on the forward superstructure with imitation leather cushions.
- Extractable hot/cold shower, aft in closed recess in the port stairs and fore in a storage on the port side.
- Exterior stairs with teak steps to the swimming platform with 8 waterlight lights by metalstyle.
- Bathing platform in G.R.P. and teak.
- Retractable bathing ladder.
- Retractable electric-hydraulic gangway by pincraft with control panel recessed in the washboard.
- 2 Aft warping capstans 4000 watt each by Sanguineti.
- Speakerphone system on the bridge, engine room, lazarette, bow, cockpit and fly.
- Close circuit camera in aft deckhead.
- Covering grill for engine room sensor in the aft deckhead in the saloon door area.
- G.R.P. Locker in the superstructure on saloon door starboard side containing 14 I-Pod socket.
- 2 Waterproof speakers Bose 131 Marine in the aft deckhead.
- Table with 10 chairs by Royal Botania on the aft deck.
- 8 Ventilation grills of different dimensions on the superstructure and on hull.
- 2 Boathooks 4 M each.
- 1 Aluminium hatch covered in teak for access to lazarette from the aft deck.
- Plexiglass box for the handle of the access hatch to crew area from the superstructure.
- 4 Stainless steel handrails for access to the forward sunbathing area.
- 2 Boathooks in the fore storages.
- 2 Fuel inlets.
- Vessel name on the transom, life belts, tender and on both sides of the bow.
- 4 Mooring ropes (2 with chain) 30 mm in nylon.

## Hull Under the Waterline

---

- 2 Trim - tabs twin disc B.C.S.
- 4 Pistons for trim-tabs motion.
- 2 Rudder blades.
- 12 Anodes on hull.
- 2 Four - blade propellers by detra.
- 2 Depth - sounders.
- 1 Speed sensor.
- 3 Ground plates for antennas.
- 4 Seacock grills.
- 8 Underwater led lights by Cantalupi approved by the classification society positioned around the stern.
- 1 Bow thruster foot by twin disc B.C.S.
- 2 Stabilizers Fins 1.7 M2 each by Naiad.

## Flying Bridge

---

- Tea deck.
- Access from main deck through exterior stair with teak steps and 5 watertight lights by metalstyle and access from wheelhouse through sliding hatch in stainless steel and tempered glass.
- Windscreens in tempered glass with stainless steel frame.
- G.R.P. Mast for radar antenna, navigation lights, antennas, search lights with remote control.
- Dashboard with plexiglass protections for steering wheel and engine controls.
- 1 Control for main engines and gear boxes made up of 2 levers.
- Magnetic compass Ritchie.
- Rudder angle indicators.
- 2 Trim-tab controls.
- Depth-sounder repeater.
- Speed repeater.
- Automatic pilot repeater simrad AP50.
- Simrad automatic pilot control.
- VHF Repeater (Handset) Sailor.
- VHF /DSC Sailor RT4801 RTX made up of a unit and a telephone.
- 2 Main engine RPM indicators.
- 2 Main engine oil pressure indicators.
- 2 Main engine water temperature indicators.
- 2 Gearbox oil temperature indicators.
- 2 Gearbox oil pressure indicators.
- 4 Main engine control panels. GPS with plotter color Geonav 11".
- Bow thruster control.
- Search light control.
- TV, VHF, SSB, GPS and TV-SAT antennas.
- Sailor radar transponder.
- 2 Side navigation lights.
- Intercom.
- Sailor Epirb.
- G.R.P. Pilot seat with imitation leather cushions.
- 1 Table with teak top and anodized aluminium base with L-Shaped sofa in GRP and imitation leather cushions.
- 2 G.R.P. multiuse lockers for fridge, ice maker, sink and barbecue.
- Sony watertight CD-Radio with I-POD socket mod. CDXHR700MW in the sunbed.
- Sunbed area with imitation leather cushions.
- 2 Watertight speakers bose 131 marine.
- Flag pole.
- 2 Shipyard burgees.
- Search light with remote control (from wheelhouse as well).
- Acoustic horn.



- Sanguineti electro-hydraulic crane with telescopic arm for tender, 360 degrees capacity load KG 900.
- Bimini top with stainless steel frame and PVC cover.
- Covers for dashboard and seats.
- 3 Eyebolts for tender fastening.
- Tender Novurania MX 460 DL with G.R.P. keel, central console and Yamaha O.B. engine 80 HP 4 strokes.
- 1 Fresh water inlet under the sink.
- 6 Stainless steel grills to cover drains on the deck.
- 2 Safety belts with light and 20 M long rope Solas.
- Exterior light control panel on the side of the stairs down to the aft deck.
- 4 Watertight lights by metalstyle in the bottom of the furniture.
- Light switch on the roll-bar.
- Acoustic-visual alarm under the roll-bar.
- 4 Self-inflatable life-rafts Solas 10 people each.
- Stainless steel handrail in the aft area.
- 1 Lead-acid storage battery for auxiliary GMDSS made up of 2 batteries voltage 12V 155 AH 24V connected.
- 1 Lead-acid storage battery for emergency made up of 2 batteries voltage 12V 155AH 24V connected.

## Lazarette

---

- Steel ladder for access to the lazarette from above.
- Access watertight door on the transom.
- Watertight door A60 for access to engine room.
- 2 Generators Kohler 50 kw.
- 2 Fire system BSCO FE 227 cylinders.
- Stainless steel sink with tap.
- 2 Engine room extractors by Gianneschi Mod. VCP351/B220/380V.
- 2 Lazarette extractors by Gianneschi MOD. C402 220/380V.
- 1 Main electric panel for utilities 220/380V.
- 1 Main electric panel for utilities 24V.
- 2 Batteries for generator ignition.
- 2 Generator silencers.
- 1 Movable case containing 12 service batteries.
- 2 Ceiling lights.
- 1 Fan by Gianneschi for service battery smoke extraction.
- 2 Tecnicomar watermaker 220L/H each.
- 1 Air compressor with 25L tank.
- 1 Aluminium step for access to the lazarette.
- 1 Axe.
- 1 Tap for fresh water.

- 1 Can 25L for distilled water storage.
- Frequency convertor 50HZ/60HZ
- 1 Emergency steering pump.
- 1 Intercom handset.
- 1 Rudder angle instrument.
- 1 Generator battery charger.
- 1 Switching valve for emergency steering.
- 1 Gangway electrohydraulic pump.
- 1 Gangway electric panels.
- 1 Trim-tab system electrohydraulic pump.
- 1 Trim-tab system electric panel.
- 2 Actuator boxes for trim-tab system.
- 1 Socket for shore power cable.
- 2 Racor filters for generators located under the floor.
- 1 Fresh water tank in G.R.P. with steel inspection hatch positioned under the floor.
- 1 Fresh water tank electric gauge positioned under the floor.
- Antislip anodized plymetal floor.
- Rudder shackle bar.
- 2 Steering pistons.
- Wooden case containing CO2 System made up of No. 3 CO2 cylinders 40L each.
- 1 Powder cylinder 6 kg.
- 1 Powder cylinder 9 kg.
- 1 Emergency portable pump 9/M3 /H.

## Engine Room

---

- Access from side gangway through a ladder with aluminium hatch for automatic closing.
- 2 Engines MTU Mod. 12V 396 TE94 2285 HP each.
- 2 Gear boxes Z.F. Mod. 4650.
- 2 Submersed exhaust pipes covered with ceramics cloth and stainless steel outside covering.
- 2 Heat exchanger for engine sea water recirculation cooling.
- 4 Air filters installed on engines.
- Thermal insulation and sound proofing.
- 3 Pipings for CO2 supply.
- 8 Pneumatic valves on fuel tanks for remote closing.
- 4 Separate fuel filters according to the type of engine.
- Fuel transfer EL/pumps 380V and 24V and manual emergency pump.
- 2 Stainless steel sea chests with water filters for main engine cooling.
- 1 Transom with 2 sea chests with filters for generators and utility.
- 2 Electric blowers/extractors 380V.
- 4 Steel fire stop gates.
- Automatic/manual system for engine room ventilation made up of 3 electric panels for

system control.

- 7 watertight ceiling lightings 1 socket 24V and 1 220V.
- Interphone bridge/engine room.
- Antislip anodized plymetal floor.
- Engine oil suction EL/pump 24V.
- Oily water tank with manual pump.
- Close circuit camera with training.
- Anticorrosive cathodic installation.
- 2 Electric pumps 380V for bilge / fire and chain washing.
- Automatic system and 24V for emptying dirty water tanks and for sewage tank with N. 2 pumps 380V connected in parallel.
- Electric pump 380V for bilge with intake suction manifold.
- Cold water hydraulic system under pressure by two autoclave pumps, one 24V and one 220V.
- Hamman waste water treatment.
- Hamman system electric panel.
- Sea water wc washing electric pump 24V.
- 2 Fuel transfer electric pumps 380V and 24V and 1 manual.
- 2 Boilers L. 150 CAD.
- 1 Circulating electric pump for hot water system.
- 1 Fuel back-up tank.
- 1 Aft grey water tank with immersion electric pump for emptying.
- 1 Electric panel 24V for MTU electronics power supply.
- 6 MTU electronic boxes.
- 1 Fuel tank level indicator panel.
- 1 Steering electrohydraulic pump made up of 2 electric engines.
- 1 Valve group for steering oil-pressure system control.
- 2 Electric panels for electrohydraulics steering pump supply.
- 2 Aft capstan electric panels.
- 1 Oil tank with 2 electric engines 15 KW each for VT NAIAD Marine MOC. 525S@ A stabilizer system working at rest and underway.
- 2 Electronic inverters for stabilizer system.
- 1 Sea water pump for stabilizer system cooling.
- 1 Electric panel for stabilizer system.
- 1 Lead-acid storage battery for main engine ignition made up of 4 batteries voltage 12V 220 AH 24 connected 440 AH.
- 2 Auxiliary generators 80 A 24V D.C. run by the main engines, one for service battery charge and one for main engine ignition charge.
- 2 Automatic battery chargers Mastervolt 100A each in parallel 24V for service batteries.
- 1 Automatic battery charger Mastervolt 50A 24V for main engine ignition batteries.
- 1 Automatic battery charger Mastervolt 50A 24V for auxiliary GMDSS batteries.
- 1 Automatic battery charger Mastervolt 25A 24V for emergency batteries.
- Switches to disconnect batteries.
- Air conditioning system capacity 216.000 BTU/H made up of 1 central unit Veco Climma

CWS modul 2163 RC with three compressors, 2 sea water pumps with bronze body and impeller 380V 50HZ, 2 treated water circulation pumps with bronze impeller 380V 50 HZ and electronic panel with all starting and control equipments.

- Bow thruster tank.
- 2 Stuffing boxes.
- 2 Propeller shafts in AISI 630.
- 2 Universal joints for engine/gearbox coupling.
- 2 Steel defences for universal joints.
- 2 Boots for coupling propeller shaft and gearbox.
- 2 Powder fire extinguishers 6KG.
- 2 CO 2 fire extinguishers 9 KG.
- Tool kit.
- Removable work bench with vice.

## Safety Equipment

---

- 40 Life jackets Solas.
- 2 Children's life jackets.
- 4 Red light hand held flares.
- 4 Orange floating smoke signals.
- 1 First aid kit Solas.
- A set of Solas posters.
- 1 Bell 300MM.
- 4 Mooring Ropes (two with chain) 30 MM nylon.
- 1 Tow rope MT 100, 30 MM in nylon.
- Radar reflector.
- Set of technical drawings related to all boat main systems.
- 2 National flags.

## Wheelhouse

---

- Ceiling covered in leather.
- Access stairs from the main deck and to flying bridge in oak.
- Walls and furniture are in oak: 1 dashboard piece of furniture with 1 drawer and leather covered top.
- Leather sofa with 3 doors one of which is blind and one bench with oak base.
- Semiglossed oak floor.
- Leather pilot seat.
- Leather and aluminium steering wheel.
- Twin disc electrohydraulic steering pump.
- Steering position with engine instrumentation made up of: 2 main engine data control monitors, 4 main engine control push-button panels, 2 RPM indicators.

- Barometer.
  - Clock.
  - Thermometer.
  - Locker for signal flags.
  - Electronic remote control levers for main engine throttle and reverse gears.
  - Rudder indicator instruments.
  - Magnetic compass ritchie.
  - Log Raymarine ST60.
  - Depth-Sounder Raymarine ST60.
  - Wind Raymarine ST60.
  - JRC JFG-600 Depth-Sounder.
  - VHF/GMDSS sailor RT5022.
  - Radar/Plotter/GPS 96 Miles JRC JMA 5210-6 black box display 15" with mini-arpa.
  - Automatic pilot Simrad AP 50.
  - Navtex receiver JRC NCR 333.
  - Twin disc trim-tabs controls.
  - Close circuit TV / Charplotter Geonav multy NAV 70100 display 15".
  - Steering pump control panel.
  - Search light control.
  - Engine room control fan system remote control.
  - Stabilizer fin control.
  - Engine room and aft deck camera swivelling control.
  - 2 Tecnicomar watermaker remote controls.
  - 1 Bow thruster control.
  - Panasonic KX-TDA 100NE telephone exchange unit.
  - 1 Digital telephone.
  - SSB/HF sailor programme 5000 150W GMDSS.
  - System JRC Jue-250 FBB with handset.
  - Infotec IF 3050 fax machine, copier, printer, scanner.
  - UMTS / GMS system.
  - Integrated network system with N. 1 router, N. 2 wi-fi access points and N. 1 laptop.
  - 1 Sailor sart II radar transponder.
  - 2 Portable VHF sailor SP32520 GMDSS
- 
- **ELECTRIC PANEL IN WHEELHOUSE:** A panel will be installed in two sections, operating as control and distribution sub panel for AC and DC networks and consists of:
    - Start and stop controls for generators
    - Connection and disconnection controls for generators and shore panel
    - 2 Volmeters for the control of the generators
    - 2 Ammeters for the control for "A" and "B" bars
    - 1 Volmeter and 2 ammeter for the control of service batteries and starting by commutator
    - 1 Volmeter and 1 ammeter for radio battery control
    - 2 Ammeters for the control of the engine alternators
    - Card for navigation light alarms

- Card for bilge high level alarm
- Change-over switch from main to emergency feeding line for navigation lights
- Instrument light switches and controls
- Switches engine room ventilation and extraction stop controls
- Various signals and controls
  
- ALARM PANEL: It is installed by the dashboard in the engine room and will have the following signals:
  - Yacht profile with leds and lights alarms
  - Yacht profile with leds and bilge + tank high/low level alarms
  - Cards for bilge alarms, test and silencing the siren
  - Station control fire-fighting system.
  - 3 Fuel level gauge.
  - 1 Water level gauge.
  - 3 Electric windscreen washer and wipers with control panel on the dashboard.
  - Sony radio-CD with 2 speakers Sony XSF1035
  - Intercom with control panel.
  - 1 Smoke detector.
  - 1 General alarm push-button.
  - Hot and cold air conditioning with 1 thermostat and 3 fan-coils and ventilation grills.
  - Ceiling lighting: 2 lights Palagi MOD. 1027 and 11 MOD. 1026.
  - 6 Electric sockets.
  - 5 Light switches.
  - 1 Lan socket.
  - 1 I-Pod socket.
  - 1 Powder fire extinguisher 6 kg.
  - 5 Windows.
  - 1 Call point.

---

## Technical Recess UnderThe Wheelhouse

---

- 1 Fan coil.
- 1 TV/radio divider panel.
- 1 TV/ sat system multi switch.
- 1 TV sat UPS.
- 6 M.T.U. electronic branch boxes.
- 1 Mastervolt battery charger 25A
- 1 Mastervolt battery charger 50A.
- 1 M.T.U. electrical/electrical connexion panel.
- 4 Veco fan-coil branch boxes.
- 1 Sailor VHF receiver.

- 1 Sailor inverter 220/24V.
- 3 Sailor power suppliers.
- Telephone exchange panel.
- 1 Stabilizer system compass.
- 1 Stabilizer system electric panel.
- 3 Fuse boxes for 220/24V utilities.
- 1 Emergency light utility electrical panel.
- 1 Power transformer 24/12V.
- 1 Transformer 220/24V control.
- NUC light mast.
- Radar repeater.
- 1 Powder fire extinguisher 6 kg.
- Set of spare bulbs and fuses.

## Saloon

---

- Stainless steel and tempered glass back door.
- 4 Windows.
- Walls in oak.
- Oak furniture with shelves: Starboard side: 1 piece of furniture with 7 doors, TV and Hi-Fi equipment, mini bar and ice-maker. On the port side, 2 single piece of furniture with one door. On aft port and starboard sides 2 small wall bookcases, bar.
- Ceiling in lacquered wood with oak perimetrical board.
- 1 Mini bar Vitrifrigo C50.
- 1 Ice-maker raritan Ice-Rette.
- 2 Coffee tables.
- Bose lifestyle system 28 with CD/DVD and 5 speakers.
- TV color LCD 42" Sharp LC 42X20E full HD with satellite receiver HD dream box 800 with hard disc 500 GB for programme recording.
- Interphone.
- 2 Leather sofas, one five seats and the other two seats, 2 puffs covered with cloth.
- 12 Decoration cushions.
- Motorized wooden venetian blinds.
- 2 Fabric drapes for saloon entrance door.
- Carpet.
- Ceiling lights: 4 lights by Palagi Mod. 1027 and 10 Mod. 1026. Osram LED strip lights at the furniture base and recessed in the ceiling perimetrical boards.
- Hot and cold air conditioning with thermostat, 4 fan coils and ventilation grills in the perimetrical frames.
- Domotic system to control curtains movements, light scenarios and TV/Hi-Fi entertainment systems with 4 control panels.
- 3 Electric sockets.
- 1 Smoke detector.

- 1 Call point.
- 1 Powder fire extinguisher 6 KG.
- Lan inlet.
- I-Pod socket.

---

## Dining Room

---

- 6 Windows.
- Ceiling in lacquered wood with oak perimetrical board.
- Walls in oak.
- Oak furniture: On the starboard side one piece of furniture with 8 doors, shelves and a built-in chest of 3 drawers. On the port side, a piece of furniture with 8 doors and shelves and fore piece of furniture with 4 doors and shelves.
- 1 dining table with 10 chairs with seat and back covered with cloth.
- 1 Full height wardrobe with cloth hanger.
- Hot and cold air conditioning with thermostat, 2 fan coils with ventilation grills in the perimetrical boards.
- Carpets.
- 6 Motorized wooden venetian blinds.
- Ceiling lights: 2 Lights by Palagi Mod. 1027 and 12 Mod. 1026. Osram LED strip lights at the furniture base and recessed in the ceiling perimetrical boards.
- 1 Electric socket.
- 2 Electric switches.
- 3 Domotic control panels.
- Interphone.
- 1 Smoke detector.

---

## Main Deck Bathroom

---

- Access door in oak with chromium plated handle and lock, doorstop on the floor.
- Lacquered wood walls, ceiling and furniture.
- Marble floor.
- Lacquered wood piece of furniture with 1 door and 1 drawer down below and wall unit with a door. Coloured glass top with wash-basin LA, stained glass top and mirror.
- 1 Electric WC Tecma with control panel.
- Electric extractor.
- Chromium plated mixer by dornbracht.
- Chromium plated fittings by Colombo: 1 Brush-holder, 1 paper holder and 1 soap dispenser.
- Mirror.
- Ceiling lighting: Lights by Palagi 1 MOD. 1027 and 1 Mod. 1026.
- 1 Electric socket.



- 2 Electric switches.

## Galley

---

- Access door in oak with chromium plated handle and lock, doorstop on the floor.
- Watertight access door to the exterior deck with stainless steel threshold.
- Walls and ceiling in lacquered wood.
- Oak wooden floor.
- Lacquered furniture with satin steel handles: On the port side a low piece of furniture with 4 doors and 1 drawer (under microwave oven), 4 doors under the windows. On the starboard side, recessed piece of furniture with 3 doors, a peninsula piece of furniture with 1 door, 1 large dustbin drawer and 1 wall unit. Foreward area: 6 wall units, 1 low piece of furniture with 4 doors, 2 large drawers and 1 chest of 3 drawers.
- 2 Siemens electric refrigerator/ deep-freezers 220 AV A.C
- 1 Gaggenau oven 90 cm.
- 1 Siemens microwave oven.
- 1 Franke stainless steel sink with 2 basins and 1 mixer.
- 1 Gaggenau cooking plate with 4 hot plates 90 cm.
- 1 Siemens dish-washer.
- 1 Wine chiller Amana by Solisa.
- 1 Gaggenau electric hood.
- Granite top.
- Hot and cold air conditioning with 1 thermostat and 1 fan coil.
- Ceiling lighting: By BCM 9 lights Mod. Ferusa 3266/0110 and 3 lights under the wall units.
- 4 Windows.
- 4 Aluminum venetian blinds.
- Interphone.
- 4 Electric switches.
- 4 Electric sockets.
- 1 Electric hood emergency control.
- 1 Call point.
- 1 Smoke detector.

## Main Deck Starboard Lobby

---

- Access door in oak with chromium plated handle and lock, doorstop on the floor.
- Watertight access door to the exterior deck with stainless steel threshold.
- Ceiling in lacquered wood with oak perimetrical board.
- Walls in oak.
- Furniture in oak: On starboard side, 1 piece of furniture with 8 doors and shelves. On port side, 1 door with chromium plated knob for access to under wheelhouse recess and 1 for access to storage.

- 3 Windows.
- 3 Wooden Venetian blinds.
- 5 Electric switches.
- 1 Call point.
- Ceiling lights: 8 Lights by Palagi MOD. 1026. Osram LED strip lights at the furniture base.
- 1 Smoke detector.
- Hot and cold air conditioning with 1 thermostat and 1 fan coil.
- 1 Staircase down to the lower deck with 9 steps and 9 built-in courtesy lights and stainless steel handrail.
- Floor and stairs covered in carpet.

## Owner's Suite

---

- Access door in oak with chromium plated handle and lock, doorstop on the floor and steel threshold.
- Ceiling in lacquered wood.
- Walls and furniture are in oak.
- Cabinets with drawers and shelves: On starboard side, low piece of furniture with 10 doors, 1 vanity unit with mirror and chair with seat and back covered with cloth. On port side, low piece of furniture with 6 doors.
- 2 Wardrobes with hanging bar and courtesy light, one of which with full height mirror and 2 drawers.
- Yale safe inside the starboard piece of furniture.
- Double bed with mattress, pillows, bed cover and 5 decoration cushions.
- 2 Drawers under the bed.
- Bedside tables with drawer.
- Reading wall lamps by Palagi Mod. 1000/03 Satin.
- Minibar vitrifrigo C39 Built-in in the port furniture.
- Interphone.
- Stereo radio-CD Sony with I-pod socket and 2 speakers Sony XSF1035.
- TV LCD 37" Sharp MOD. DVPNS708.
- Satellite decoder Humax Mod. F3 Fox.
- 5 Windows.
- 5 Roman blinds and 5 screening curtains.
- Carpet.
- Ceiling lights: 4 Lights by Palagi Mod. 1024 and 11 Mod. 1026. Osram Led strip lights at the furniture base and recessed in the ceiling perimetrical boards.
- Hot and cold air conditioning with 1 thermostat and 2 fan coils.
- 4 Electric sockets.
- 3 Electric switches
- 1 Smoke detector.
- Lan inlet.

---

## Owner's Bathroom

---

- Access door in oak with chromium plated handle and lock, doorstop on the floor and chromium plated hook on the inside.
- Lacquered wood walls and ceiling.
- Fix satin glass for exterior light entrance.
- Wenge piece of furniture with 2 drawers, 2 doors and 2 wash basins lying on top.
- Mirror.
- Electric WC tecma with control panel.
- Bidet.
- Chromium plated taps by Ponsi: 2 wash-basin mixer, 1 bidet mixer, 1 complete shower column.
- Chromium plated bathroom fittings by Colombo: 1 brush holder, 3 soap dispensers, 1 glass holder, 1 sponge holder and 5 towel holders.
- Shower box with glass doors.
- Electric fan.
- Marble floor with wenge perimetrical frame.
- Ceiling lighting: 2 lights Palagi Mod. 1026 and over the mirror 2 lights Palagi Mod. 1027.
- 2 Electric switches.
- 2 Electric sockets.

---

## Lower Deck Lobby

---

- Lacquered wood ceiling.
- Oak walls.
- Oak wardrobe with chromium plated knob containing 1 fire inlet unit 45, 1 fire hose, 1 nozzle, 1 fire hose chromium plated holder and 1 key.
- 1 Powder fire extinguisher 6 kg.
- Carpet.
- 1 Smoke detector.
- Ceiling lighting: 5 lights by Palagi Mod. 1026.
- 3 Electric Switches.
- 1 Electric socket.
- 1 Call point

---

## Aft Guest Cabin

---

- Access door in oak with chromium plated handle and lock, doorstop on the floor and steel threshold.
- Ceiling in lacquered wood with oak perimetrical board.
- Walls in oak.
- Furniture in oak: Cabinets with 14 doors and shelves, where minibar, DVD player, Radio-

CD player and satellite decoder are recessed.

- Leather sofa with three drawers in the base.
- 2 Oak bookcases on the forward bulkhead.
- Double bed with mattress, pillows, bed cover and 5 decoration cushions.
- Bed-side tables with drawer and reading wall - lamp by Palagi Mod. 1000/03.
- 4 Drawers under the bed.
- Vanity unit with mirror and chair with seat and back covered with cloth.
- Stereo Radio-CD Sony with I-pod socket and 2 speakers Sony XSF 1035 in the porthole recess.
- TV LCD 37" Sharp Mod. LC 3 7 X 20 E Full HD.
- Sony DVD player Mod. DVPNS 708.
- Satellite decoder HUMAX Mod. F3FOX.
- Minibar Vitrifrigo C39.
- 4 Portholes with deadlights and mosquito screens.
- 2 Wooden Venetian blinds and 2 Roman blinds.
- Carpet.
- Ceiling lighting: Lights by Palagi 6 Mod. 1027 and 11 Mod. 1026. Osram LED strip lights at the furniture base and recessed in the ceiling perimetrical boards.
- 3 Electric switches.
- 4 Electric sockets.
- 1 Smoke detector.
- Hot and cold air conditioning with 1 thermostat, 2 fans coils and ventilation grills over the bookcases.
- Interphone.
- Lan Inlet.

---

## Aft Guest Cabin Wardrobe

---

- Access door in oak with chromium plated handle and lock, doorstop on the floor and steel threshold.
- Ceiling in lacquered wood with oak perimetrical board.
- Walls in oak.
- Furniture in oak: On portside, cabinet with 3 doors and inside 3 drawers and 1 shelf. On the starboard side, cabinet with 2 doors and 1 shelf.
- Yale safe recessed inside the cabinet.
- Full height mirror.
- Coat hanger rod.
- Ceiling lighting: Lights by Palagi 2 Mod. 1026.
- 1 Electric switch.
- 1 Wooden Venetian blind and 1 Roman blind in fabric.
- Carpet.
- Porthole with dead lights and mosquito screen.

---

## Aft Guest Cabin Bathroom

---

- Access door in oak with chromium plated handle and lock, doorstop on the floor and chromium plated hook on the inside.
- Lacquered wood walls and ceiling.
- Marble floor with wenge perimetrical frame.
- Electric WC Tecma with control panel.
- Bidet.
- Wenge piece of furniture with 2 drawers, 2 doors and 2 wash basins lying on top.
- Cabinet with 2 doors in lacquered wood on the bulwarks.
- Mirror.
- Shower in separate recess with plexiglass door and chromium plated handle.
- Chromium plated taps by Ponsi: 2 mixer for washbasin, 1 mixer for bidet, 1 complete shower column.
- Chromium plated bathroom fittings colombo: 1 brush-holder, 3 soap dispensers, 1 glass-holder, 1 sponge holder and 4 towel holders.
- Electric fan.
- Ceiling lighting: 1 light Palagi Mod. 1026, 3 lights Mod. 1027 and 1 watertight light Mod. 0102/03.
- 3 Electric switches.
- 2 Electric sockets.
- Porthole with dead light and mosquito screen.
- 1 Wooden Venetian blind and 1 Roman blind in fabric.

---

## Starboard Amidship Guest Cabin

---

- Access door in oak with chromium plated handle and lock, doorstop on the floor and steel threshold.\
- Ceiling in lacquered wood with oak perimetrical board.
- Walls in oak.
- Oak furniture: Cabinets with 4 doors on the bulwarks where minibar, DVD player, radio-CD player and satellite decoder are recessed.
- Oak wardrobe with hanging bar and courtesy light, with full height mirror and 2 drawers and 1 inspection hatch on the back.
- 2 Twin beds with pillows, mattresses, bed covers and 6 decoration cushions in total.
- 1 Additional pullman bed with mattress, bed cover and pillow.
- 1 Bedside table with drawer.
- 4 Drawers under the beds.
- 3 Reading wall lamps by BCM Mod. 2146/00.A/11.
- Porthole with dead light and mosquito screen.
- 1 Wooden Venetian blind and 1 Roman blind in fabric.
- TV LCD 20" Sharp LC20 AD 5 E-BK HD ready.
- DVD player Sony DVPNS 708.

- Satellite decoder Humax Mod. F3 Fox.
- Stereo radio-CD Sony with I-pod socket and 2 speakers Sony XSF 1035 in the porthole recess.
- Interphone.
- Ceiling lighting: 2 lights by Palagi Mod. 1027 and 4 Mod. 1026. Osram LED strip lights at the furniture base and recessed in the ceiling perimetrical boards.
- Carpet.
- Hot and cold air conditioning with thermostat and 1 fan coil with ventilation grill over the wardrobe.
- 2 Electric sockets.
- 2 Electric switches.
- 1 Smoke detector.
- Lan Inlet.

---

## Starboard Guest Cabin Bathroom

---

- Access door in oak with chromium plated handle and lock, doorstop on the floor and chromium plated hook on the inside.
- Lacquered wood walls and ceiling.
- Marble floor with wenge perimetrical frame.
- Electric wc Tecma with control panel.
- Bidet.
- Wenge piece of furniture with 1 drawer and 1 wash-basin lying on top.
- Cabinet with 2 doors in lacquered wood on the bulwarks.
- Mirror.
- Shower in separate excess with plexiglass door and chromium plated handle.
- Chromium plated taps by Ponsi: 1 mixer for washbasin, 1 mixer for bidet, 1 complete shower column.
- Chromium plated bathroom fittings Colombo: 1 brush-holder, 2 soap dispensers, 1 glass-holder, 1 sponge holder and 3 towel holders.
- Electric fan with ventilation grill on the ceiling.
- Ceiling lighting: 1 light Palagi Mod. 1026, 3 lights Mod. 1027 and 1 watertight light Mod. 0102/03.
- 3 Electric switches.
- 2 Electric sockets.
- Portholes with dead light and mosquito screen.
- 1 Wooden Venetian blind and 1 Roman blind in fabric.

---

## Port Amidship Guest Cabin

---

- Access door in oak with chromium plated handle and lock, doorstop on the floor and steel threshold.

- Ceiling in lacquered wood with oak perimetrical board.
- Walls in oak.
- Oak furniture: Cabinets with 4 doors on the bulwarks where minibar, DVD player, radio-CD player and satellite decoder are recessed.
- Oak wardrobe with hanging bar and courtesy light, with full height mirror and 2 drawers and 1 inspection hatch on the back.
- 2 Twin beds with pillows, mattresses, bed covers and 6 decoration cushions in total.
- 1 Additional pullman bed with mattress, bed cover and pillow.
- 1 Bedside table with drawer.
- 4 Drawers under the beds.
- 3 Reading wall lamps by BCM Mod. 2146/00.A/11.
- Porthole with dead light and mosquito screen.
- 1 Wooden Venetian blind and 1 Roman blind in fabric.
- TV LCD 20" Sharp LC 20 AD 5E - BK HD ready.
- DVD player Sony DVPNS 708.
- Satellite decode Humax Mod. F3 FOX.
- Stereo radio-CD Sony with I-pod socket and 2 speakers Sony XSF 1035 in the portholes recess.
- Interphone.
- Ceiling lighting: 2 lights by Palagi Mod. 1027 and Mod. 1026. Osram LED strips lights at the furniture base and recessed in the ceiling perimetrical boards.
- Carpet.
- Hot and cold air conditioning with thermostat and 1 fan coil with ventilation grill over the wardrobe.
- 2 Electric sockets.
- 2 Electric switches.
- 1 Smoke detector.
- 1 Lan Inlet.

## Port Guest Cabin Bathroom

- Access door in oak with chromium plated handle and lock, doorstop on the floor and chromium plated hook on the inside.
- Lacquered wood walls and ceiling.
- Marble floor with wenge perimetrical frame.
- Electric wc tecma with control panel.
- Bidet.
- Wenge piece of furniture with 1 drawer and 1 wash-basin lying on top.
- Cabinet with 2 doors in lacquered wood on the bulwarks.
- Mirror.
- Shower in separate recess with plexiglass door and chromium plated handle.
- Chromium plated taps by Ponsi: 1 mixer for washbasin, 1 mixer for bidet, 1 complete shower column.

- Chromium plated bathroom fittings Colombo: 1 brush-holder, 2 soap dispensers, 1 glass holder, 1 sponge holder and 3 towel holders.
- Electric fan with ventilation grill on the ceiling.
- Ceiling lighting: 1 light Palagi mod. 1026, 3 lights mod. 1027 and 1 watertight light mod. 0102/03.
- 3 Electric switches.
- 2 Electric sockets.
- Porthole with dead light and mosquito screen.
- 1 Wooden Venetian blind and 1 Roman blind in fabric.

## Fore Guest Cabin

---

- Access door in oak with chromium plated handle and lock, doorstop on the floor and steel threshold.
- Ceiling in lacquered wood with oak perimetrical board.
- Walls in oak.
- Furniture in oak: On the port side, cabinet with 3 doors, one of which conceals 3 drawers. On the starboard side, cabinet with 4 doors where minibar, DVD player, radio-CD player and satellite decoder are recessed.
- Vanity unit with mirror and chair with set and back covered with cloth.
- Aft wardrobe with hanging bar and courtesy light, full height mirror behind the door, 1 Yale safe, 2 inspection hatches and 1 access hatch to under stairs recess.
- Forward wardrobe with hanging bar and courtesy light, full height mirror behind the door, 1 yale safe, 2 inspection hatches and 1 access hatch to under stairs recess.
- Forward wardrobe with hanging bar and courtesy light, full height mirror behind the door and 1 inspection hatch.
- 1 Double bed with pillows, mattress, bed cover and 5 decoration cushions.
- 4 Drawers under the beds.
- 2 Bedside tables with drawer.
- Interphone.
- 3 Portholes with dead light and mosquito screens.
- Stereo radio-CD Sony with I-Pod socket and 2 speakers Sony XSF 1035 in the porthole recess.
- TV LCD 26" Sharp mod. LC26D44E-BK HD ready.
- DVD player Sony mod. DVPNS708.
- TV satellite decoder Humax mod. F3FOX.
- Mini bar Vitrifrigo C39.
- Ceiling lighting: 4 lights by Palagi mod. 1027 and 9 mod. 1026. Osram LED strip lights at the furniture base and recessed in the ceiling perimetrical boards.
- 4 Electric sockets.
- 3 Electric switches.
- 1 Smoke detector.
- 2 Wooden Venetian blinds and 2 Roman blinds in fabric.



- Carpet.
- Hot and cold air conditioning with thermostat and 2 fan coils with ventilation grills in the perimetrical boards.
- Emergency escape door with chromium plated handle.
- Lan inlet.

---

## Fore Guest Bathroom

---

- Access door in oak with chromium plated handle and lock, doorstop on the floor and chromium plated hook on the inside.
- Lacquered wood walls and ceiling.
- Marble floor with wenge perimetrical framee.
- Electric WC Tecma with control panel.
- Bidet.
- Wenge piece of furniture with 2 drawers, 2 doors and 2 wash-basins lying on top.
- Lacquered wood cabinet with 2 doors and 2 shelves on the bulwarks.
- Mirror.
- Shower box with glass doors.
- Chromium plated taps by Ponsi: 2 mixers for washbasin, 1 mixer for bidet, 1 complete shower column.
- Chromium plated bathroom fittings Colombo: 1 brush holder, 2 soap dispensers, 1 glass holder, 1 sponge holder and 4 towel holders.
- Electric fan with ventilation grill.
- Ceiling lighting: 2 light Palagi mod. 1026 and 3 lights mod. 1027.
- 2 Electric switches.
- 2 Electric sockets.
- Porthole with dead light and mosquito screen.
- 1 Wooden Venetian blind and 1 Roman blind in fabric.

---

## Captain's Cabin

---

- Access door in lacquered wood with chromium plated handle and locker, door stop on the floor.
- Furniture in lacquer wood: 1 wardrobe with mirror on the door, hanging bar, Yale safe and inspection hatch. 1 wardrobe with 2 superimposed doors. 2 cabinets with 1 door on the bulwarks.
- Walls in laminated plastic.
- Ceiling in imitation leather.
- One single bed with pillow, mattress and bed cover. 6 Drawers and 1 door in the base.
- Radio-CD Sony CDXGT420 with I-pod inlet and 2 speakers Sony XSF1035 AM.
- Porthole with dead light and mosquito screen.
- Curtain.

- Carpet.
- Reading lamp by BCM mod. 3265/00 A.
- Ceiling lighting: 5 Palagi lights mod.1026.
- 2 Electric switches.
- 1 Electric socket.
- Hot and cold air conditioning with thermostat and 1 fan coil.
- Interphone.
- 1 Smoke detector.

---

## Captain's Bathroom

---

- Access door in lacquered wood with chromium plated handle and lock, door stop on the floor and 2 chromium plated hooks on the inside.
- Laminated plastic walls.
- Lacquered ceiling.
- Lacquered furniture: 2 lockers with 2 doors on the bulwarks, 1 wall unit over the washbasin with mirror.
- Piece of furniture with built-in washbasin and 2 doors.
- Electric WC Tecma with control panel.
- Shower with curtain and ceiling rail.
- Porthole with dead light, mosquito screen and curtain.
- Chromium plated taps by Ponsi: 1 mixer for washbasin and 1 shower column.
- Fittings by Inda: 1 brush holder, 1 soap holder, 1 glass holder, 1 sponge holder and 2 towel holders.
- Ceiling lighting: 2 lights by Palagi mod. 1026.
- 2 Electric switches.
- 1 Electric socket.
- Electric fan.
- Half-glossed teak grating floor.

---

## Crew Cabin Lobby

---

- Furniture in lacquered wood: 2 wall units with 2 doors and 1 wardrobe with 2 superimposed doors and shelves.
- Laminated plastic walls.
- Imitation leather ceiling.
- Varnished steel escape ladder to the fore deck.
- Escape hatch to the fore deck with glass.
- Floor and 2 steps covered with carpet.
- Ceiling lighting: 2 lights by Palagi mod. 1026.
- 2 Electric switches.
- 1 Call point.

---

## 2 Crew's Cabins (Symmetrical)

---

- Access door in lacquered wood with chromium plated handle and locker, door stop on the floor and 2 chromium plated hooks.
- Furniture in lacquer wood: 1 wardrobe with 2 doors and shelves under the upper bed, 3 drawers under the lower bed, 3 lockers with 1 door and shelves on the bulwarks, 1 wall unit with 1 door.
- Walls in laminated plastic.
- Ceiling in imitation leather.
- 2 Single bunk beds with pillow, mattress and bed cover.
- Radio-CD Sony CDXGT420 with I-pod inlet and 2 speakers Sony XSF1035AM.
- Porthole with dead light and mosquito screen.
- Curtain.
- Carpet.
- 2 Reading lamps by BCM mod. 3265/00.A.
- Ceiling lighting: 2 Palagi lights mod. 1026.
- 1 Electric switch.
- 1 Electric sockets.
- Hot and cold air conditioning with thermostat and 1 fan coil with ventilation grill.
- 1 Smoke detector.

---

## 2 Crew's Bathrooms (Symmetrical)

---

- Access door in lacquered wood with chromium plated handle and lock, door stop on the floor and 2 chromium plated hooks on the inside.
- Laminated plastic walls.
- Lacquered ceiling.
- Lacquered furniture: 2 wall units, one of which with mirror door.
- Piece of furniture with built-in washbasin, 2 doors and 1 drawer.
- Electric WC Tecma with control panel.
- Shower with curtain and ceiling rail.
- Porthole with dead light, mosquito screen and curtain.
- Chromium plated taps by Ponsi: 1 mixer for washbasin and 1 shower column.
- Fittings by Inda: 1 brush holder, 1 soap holder, 1 glass holder, 1 sponge holder and 2 towel holders.
- Ceiling lighting: 2 lights by Palagi mod. 1026.
- 2 Electric switches.
- 1 Electric socket.
- Electric fan.
- Half-glossed teak grating floor.

---

## Crew Mess

---

- Oak access stairs with 8 steps and 8 recessed courtesy lights.
- Watertight access door to the crew cabin lobby.
- Lacquered wood ceiling and walls.
- Lacquered wood furniture: 3 wall units with 2 doors and 2 lockers with shelves on the bulwarks. 1 recess case between the sofas.
- Table with aluminum piston base.
- 2 Sofa covered in imitation leather.
- 1 Access hatch to technical recess in the staircase.
- Siemens washing machine.
- Siemens drier.
- Refrigerator L 85 Vitrifrigo C85.
- Microwave oven Amana by Solisa.
- TV LCD 20" Sharp Sony mod. LC20S5E-WW.
- DVD player Sony mod. DVPNS708.
- Satellite TV decoder Humax mod. F3FOX.
- Bilge alarm panel.
- Wind station repeater.
- Close circuit monitor.
- Hot and cold air conditioning with thermostat and 1 fan coil with ventilation grill.
- Ceiling lighting: 2 lights by Palagi mod. 1026.
- 2 Electric switches.
- 4 Electric sockets.
- 1 Call point.
- 1 Smoke detector.
- 1 Powder fire extinguisher 6 KG.
- 1 Access hatch to technical recess under the floor.
- 1 Watertight tank for bow thruster engine.
- Ceramiflex floor.
- Porthole with dead light and mosquito screen.
- Curtains.
- Lan inlet.

---

## Исключения

При продаже яхты исключаются личные вещи владельца.

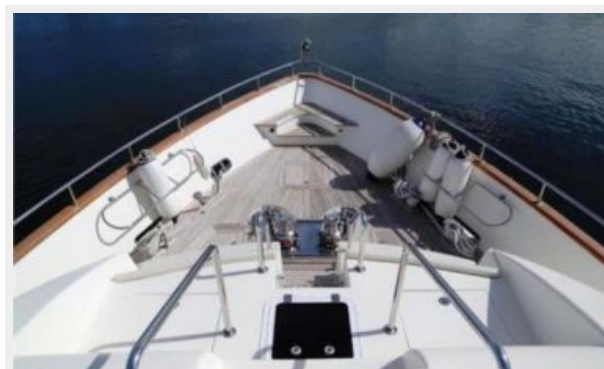
---

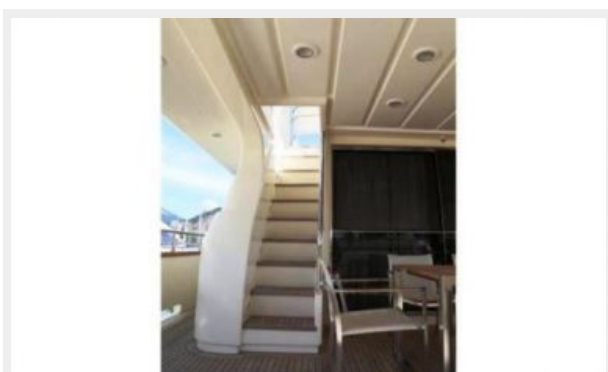
## Отказ от ответственности

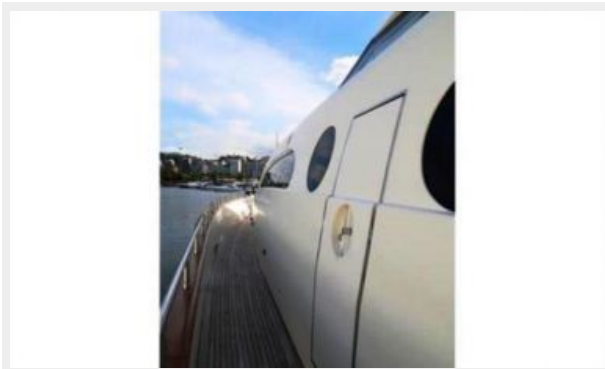
Компания предоставляет описание судна или яхты добросовестно, но не может гарантировать точность этой информации, а также не ручается за техническое состояние. Покупатель должен проинструктировать своих агентов или оценщиков исследовать представленную информацию более подробно, по собственному желанию. Продажа судна или яхты, изменение цены или снятие с продажи будет происходить без

предварительного уведомления.

# ФОТОГРАФИИ

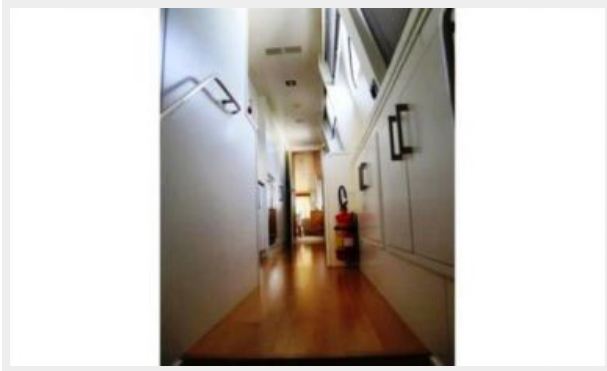


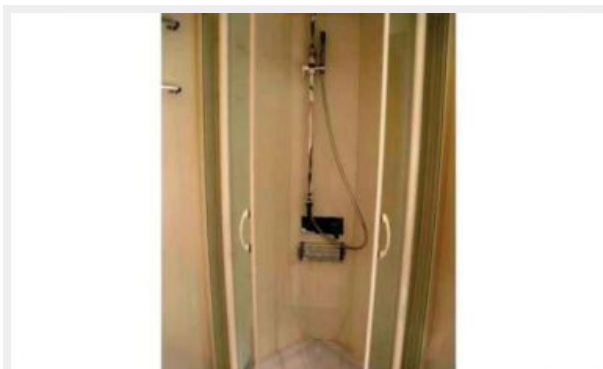
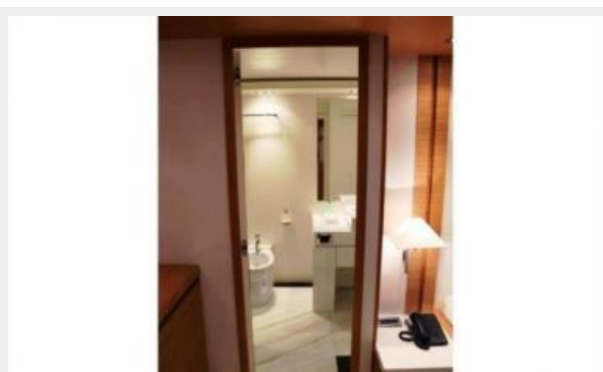
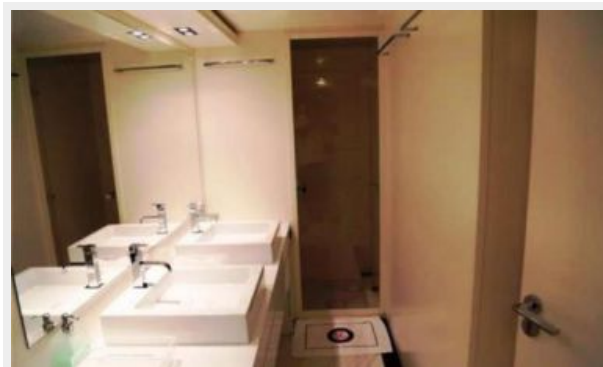




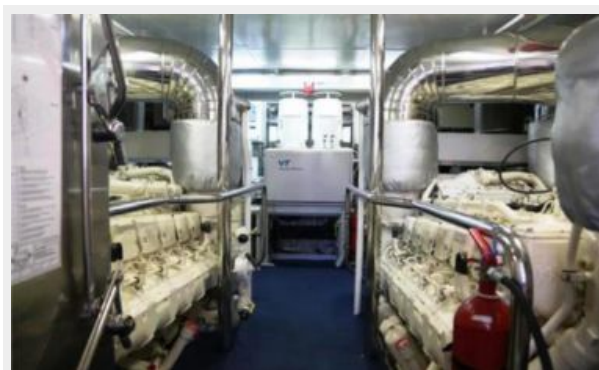


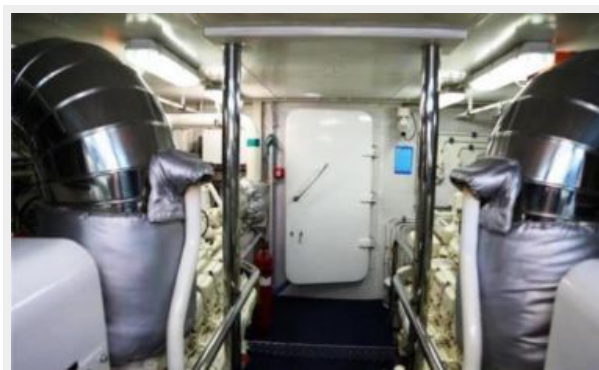












# КОНТАКТЫ

---

Андрей Шестаков (Andrey Shestakov) – ведущий яхтенный брокер отдела продаж яхт и судов компании Shestakov Yacht Sales Inc. Официальный представитель Shestakov Yacht Sales Inc. для русскоговорящих клиентов в центральном офисе компании в Майами/Форт Лодердейл/Флорида/США.

## Контактная информация

---

Email: [andrey@shestakovyachtsales.com](mailto:andrey@shestakovyachtsales.com)

Web: [shestakovyachtsales.com](http://shestakovyachtsales.com)

## Телефоны

---

Краснодарский край: **+7(918)465-66-44**

США, Майами, Флорида: **+1(954)274-4435**

## Время работы

---

Понедельник – Суббота: **9:00 - 21:00**  
EDT

Воскресенье: **Закрито**

## Адрес

---



Harbour Towne Marina, 850 NE 3rd St,  
STE 213, Dania, FL 33004