

COHO — OCEAN YACHTS



Builder: [Ocean Yachts](#)

Year Built: 1989

Model: Sport Fisherman

Price: PRICE ON APPLICATION

Location: United States

LOA: 63' 0" (19.20m)

Beam: 17' 8" (5.38m)

Min Draft: 4' 8" (1.42m)

Cruise Speed: 20 Kts. (23 MPH)

Max Speed: 26 Kts. (30 MPH)

Our experienced yacht broker, Andrey Shestakov, will help you choose and buy a yacht that best suits your needs **Coho — Ocean Yachts** from our catalogue. Presently, at Shestakov Yacht Sales Inc., we have a wide variety of yachts available on our sale's list. We also work in close contact with all the big yacht manufacturers from all over the world.

If you would like to buy a yacht **Coho — Ocean Yachts** or would like help answering any questions concerning purchasing, selling or chartering a yacht, please call **+1(954)274-4435**

TABLE OF CONTENTS

TABLE OF CONTENTS	2
SPECIFICATIONS	4
Overview	4
Basic Information	4
Dimensions	4
Speed, Capacities and Weight	4
Accommodations	4
Hull and Deck Information	5
Engine Information	5
DETAILED INFORMATION	6
Vessel Walkthrough	6
Master Stateroom	6
VIP Stateroom	6
Guest Cabins	6
Salon	7
Galley	7
Cockpit	7
Deck	8
Flybridge	8
Electronics & Navigation	9
Engine & Mechanical	9
Electrical System	9
Service	9
Remarks	9
Disclaimer	10
Exclusions	10
Disclaimer	10
PHOTOS	11

CONTACTS	21
Contact details	21
Telephones	21
Office hours	21
Address	21

SPECIFICATIONS

Overview

Motivated seller. Ready to Move!Coho is a fish raising machine that has all the room and amenities of a large motor yacht. The 4stateroom and massive salon will make a long stay in the Bahama a pleasure. Recent upgradesinclude new bow thruster, new engine air seps, and a motivated seller will make this vessel asweet deal.

Basic Information

Category: Sport Fisherman	Model Year: 1989
Year Built: 1989	Country: United States
Fly Bridge: Yes	

Dimensions

LOA: 63' 0" (19.20m)	Beam: 17' 8" (5.38m)
Min Draft: 4' 8" (1.42m)	Clearance: 14' 9" (4.50m)

Speed, Capacities and Weight

Cruise Speed: 20 Kts. (23 MPH)	Max Speed: 26 Kts. (30 MPH)
Displacement: 74000 Pounds	Water Capacity: 180 Gallons
Fuel Capacity: 1550 Gallons	

Accommodations

Total Cabins: 4	Total Berths: 8
Total Heads: 3	

Hull and Deck Information

Hull Material: Fiberglass

Engine Information

Engines: 2

Manufacturer: Detroit Diesel

Model: 12V92

Engine Type: Inboard

Fuel Type: Diesel

DETAILED INFORMATION

Vessel Walkthrough

The interior accommodations are expansive and quite extravagant, particularly for a sport fishing yacht of this size. There are 4 staterooms. The Master is located amidship with ensuite head. Two guest staterooms are located starboard aft of the Master Stateroom and share a head. These staterooms may be utilized for crew quarters as well. The VIP Stateroom is forward with ensuite head. The decor throughout is relaxed with all new headliner and wallpaper in the salon.

Master Stateroom

The spacious owner's stateroom is located amidships and is reached from the starboard companionway. This stateroom is very spacious and beautifully appointed. There is a queen bed with the head at the aft bulkhead. The upholstered headboard and custom bedspread in this room are very striking. There is a built-in night table on either side. The wall opposite the foot of the bed has a wood finish with built-in TV and entertainment center, hanging cedar lockers and drawers. A mirrored vanity with makeup lighting, cabinet, drawers and recessed stool is built into the port side wall. The Ensuite head is nicely appointed and has a separate stall shower, mirrored vanity, Corian molded wash basin and Dometic heads. Replaced all faucets in ensuite head with Kohler nickel finish. The lighting is provided by 12VDC and 12VAC fixtures in the overhead and at the head of the bed. There is also indirect lighting at the floor level around the base of the bed. An overhead hatch with screen is located above the vanity. The walls are high gloss teak and the carpet is a custom design which resembles sand on a beach. The custom bedspread is tastefully accented with colorful throw pillows and shams.

VIP Stateroom

The VIP guest stateroom is located forward, full width with a queen bed placed athwartships to port. The ensuite head and shower are located in the forepeak which provides for a very spacious cabin. There are four hanging lockers with doors, one in each corner, and built-in cabinetry above the headboard and along the starboard bulkhead opposite the foot of the bed. There is a Corian countertop with drawers and cabinet storage beneath. A TV is flush mounted in the cabinetry on the bulkhead above the countertop. There is a reverse cycle air conditioning unit provided for this cabin that is shared with the master stateroom with controls in the main cabin. Lighting is provided by 12VDC and 12VAC fixtures overhead and on either side of the bed at the headboard. Indirect lighting is placed around the cabinets at the floor level and above. Three overhead hatches with screens open to the foredeck. The joiner work in this cabin is beautiful high gloss teak.

Guest Cabins

Accessed from the starboard companionway aft of the owner's stateroom is the guest/crew cabin.

A washer and dryer are mounted in a recessed cabinet in the companionway. The guest head with shower is to the port end of the companionway and serves both cabins. Replaced all faucets in head with Kohler nickel finish. Each of these two cabins has twin berths, a hanging locker and drawers. Each cabin is reached from the companionway down two steps. Rod lockers with sliding smoked Plexiglass doors and indirect lighting are placed along the outboard bulkhead providing an excellent display for blue water fishing tackle.

Salon

Moving aft and up the steps from the companionway is a huge salon and galley area. New headliner throughout the salon. The decor in this area uses the same theme and color schemes as the forward areas. A small built-in dinette with teak oval table and two folding chairs adjoins the galley to starboard. An entertainment center is built into the cabinetry above the dinette providing a view of the flat screen TV from the salon seating. New Yamaha surround with Bose speakers and subwoofers. The bar is located to starboard just aft of the dinette and new stainless Kitchen Aid ice machine, sink, and new stainless wine chiller 30 bottle storage. There is an L-shaped sofa to port with a teak hi-lo drop leaf table. Sofas are spacious and done in Sunbrella Fabric with colorful throw pillows. The window treatments are custom wood blinds and upholstered valances in pleated fabric. The carpeting is the same carpet throughout the interior.

Galley

The galley is forward from the salon to the port and is separated from the salon area by a large teak cabinet which contains the refrigerator and a smaller cabinet has a Corian countertop, drawers, cabinet, new built-in trash compactor and an overhead cabinet. There are ample teak cabinets above and below countertops which provide storage for dishes, cookware, microwave and small appliances. The galley floor is beautifully done in traditional teak and holly.

Dumbwaiter (from Galley to Flybridge)• GE side by side refrigerator/freezer• Microwave• New Stainless Kitchen Aid Trash compactor• Hot and cold pressure water• Teak and holly flooring• Drawer storage• Large window• Exhaust fan• Cooktop electric burners and Microwave/Convection Oven• Single stainless steel sink• Undercounter cabinets• Direct and indirect lighting• Air conditioning vent• Corian countertops• Trash compactor• Ice maker• Wine cooler

Cockpit

A custom solid wood sliding door in the aft salon bulkhead provides access to the spacious cockpit which is well equipped for fishing and has access to water toys. The transom gate and tuna door work equally well for boarding large fish. New padded white bolsters are mounted on tracks to port, starboard and aft. The wide teak covering boards have flush mounted rod holders

and are maintained in natural teak finish. Built-in cabinets aft in the cockpit house the bait prep center, tackle cabinet, cockpit controls and engine room access hatchway. New 75 gal live well bait tank. The cockpit deck has been completely reinforced, glassed and painted with Imron non skid.

Deck

• Anchor (Rebuilt anchor system: reinforced bow pulpit to receive larger anchor and chain, renewed windless to handle larger chain, added additional chain to 400', new rollers, new plow style anchor, plus spare fortress anchors)• Bow pulpit and rails, side stanchions• Coast Guard safety package• Fiberglass deck• Freshwater and saltwater wash downs• Marquipt electric dingy davit (Davit renewed with all new electronics, circuits, control cords, ect.)• 14 ft. Novurania with 60 HP Yamaha motor & sun cover• Ideal electric windlass• Fenders and lines• Life jackets and life ring• Navigation lights, spreader lights• Yellow Awlgrip hull• Cockpit sun cover• Companion seats & covers• Dingy chocks• Rupp triple spreader outriggers• Flush mounted rod holders with cup holders• Tuna door with gate• Bait prep station• Tackle center• (2) helm seats plus Stidd Captain Seat (3 total)• Cockpit side lockers• New Teak covering boards• In-deck fish box• New Teak (Transom teak, Re-upholsters bump rail around cockpit for fishing, and Style rod holders in transom) (6 months old)• (4) New underwater 12V LED lights (Blue) (6 months old)• (2) AC Halogen underwater lights• 6 person life raft• Teak swim platform with customized transom door and hinges• Replaced ceiling lights from old halogen lights throughout with LED lights

Flybridge

The flybridge ladder is welded aluminum tubing with white non slip treads, providing easy access to the spacious flybridge from the cockpit. The large console has storage beneath and flush-mounted electronics in custom cabinetry for weather protection and easy viewing. A large fiberglass electronics cabinet with smoked Plexiglass doors is above the helm and built into the fiberglass hardtop. There are stainless steel and aluminum grab rails conveniently placed on the console, overhead and aft. Two helm seats are pedestal mounted at the console and a third to starboard. All are painted in white Imron and have vinyl cushions. A cabinet with wet bar is placed just to starboard of the console. A small refrigerator is built into the starboard end of the console opposite the wet bar. Forward of the console is a large seating area which will accommodate eight to ten adults. There is a large drop leaf table with cabinet storage beneath. Built in under the table is a Dumbwaiter for serving your guests from the galley area to upper deck. The seating area has cabinet storage beneath the cushions.

The flybridge is enclosed with new Poly Isinglass (3 months) which provides excellent visibility in all directions including the cockpit. The comfortable seating here makes this a favorite place to sit with guests.

Electronics & Navigation

• All New Electronics 2015 ((2) Furuno Navnet TZ Touch 14 with chirp transducer, touch screens, radar 4' open array, depth, chart) • New Simrad autopilot (2015) • 1 24' Raymarine monitor • New ICOM VHF with new antennas • VHF radio (salon) • High Definition Flat Panel Screen • Interface for GPS • Flybridge speakers • Furuno GPS speed log • VCRs • New Fusion Radio • New Fusion AM/FM/CD radio (flybridge) • Hailer horn • New antennas • ACR remote searchlight • Satellite TV antenna • Fusion CD Player • New Camera System (7) HD Cameras (3 in engine room, 1 facing bow, 1 in salon, and 2 in cockpit) and DVR Camera recorder 30 days memory • (4) TV's • New entertainment system (New TV, Yamaha receiver with surround, BOSE speakers custom installed in headliner with sub-woofer under couch, Apple TV and Blu-Ray DVD Player)

Engine & Mechanical

Twin Detroit Diesel completely rebuilt in May 2006.

• Total Power: 2160 • New Engine Air Sep Filtration Assembly 2020 • 4 Marine Air reverse cycle air conditioning units • New Bow Thruster 2019 • Automatic and manual halon fire extinguishing systems • Hynautic hydraulic steering • Bennett trim tabs • Acoustical and thermal insulation • 2 bilge blowers, 5 automatic and manual bilge pumps • Engine fuel filters • Lube oil transfer system • 2 extra propellers • Engine synchronizer • Engine alarm and emergency stop • Engine fuel shut off valve • Airseps • Replaced holding tank with new style 2015 • Replaced fresh water tank 2014 • Replace hot water tank 2013 • Engine room gauges and panels, with direct CCTV monitoring from helm • Racor fuel filters • Sea Recovery water maker • Replaced old shaft seals with new modern style 2014 • Water pumps: New AC and DC fresh water pumps • New inverter system (isolated on its own battery bank separate from engines and house batteries) 2013 • New Dometic Heads fresh water system (New toilets, new hoses throughout and new macerator) 2013

Electrical System

• Northern Lights 20 kw generator - 2072 hrs. • Northern 12 kw generator - 1490 hrs. • 4 batteries & automatic battery charger • Dual dockside electrical cables • 4 new 8D batteries 2017 • Cablemaster shore power cable retractors (both sides) • Flybridge mounted electronics batteries with separate charger for flybridge electronics • Generators were replaced new with Retrofit.

Service

• New Bow Thruster • New rudder packing • New Engine Air Seps

Remarks

COHO one of the nicest 63' Ocean's out there. Her extensive equipment list and long list of ongoing improvements and upgrades during the past two years leave nothing to be done to prepare her for a season of fishing or cruising. She has had continuous maintenance by the absolute best professionals, and with her all new interior is indeed a pleasure to view.

Disclaimer

The Company offers the details of this vessel in good faith but cannot guarantee or warrant the accuracy of this information nor warrant the condition of the vessel. A buyer should instruct his agents, or his surveyors, to investigate such details as the buyer desires validated. This vessel is offered subject to prior sale, price change, or withdrawal without notice.

Exclusions

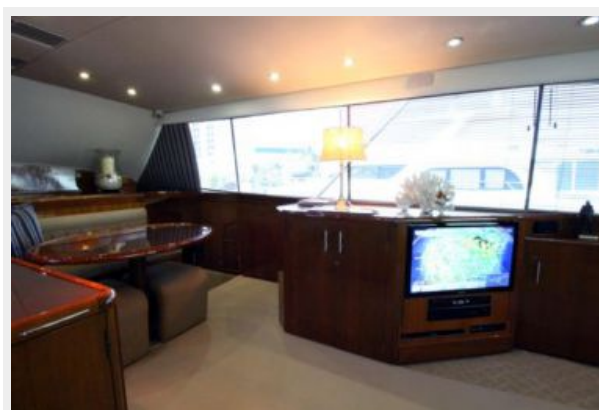
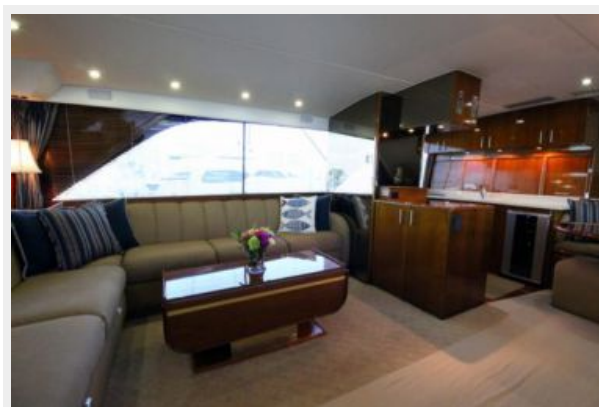
Owner's personal belongings.

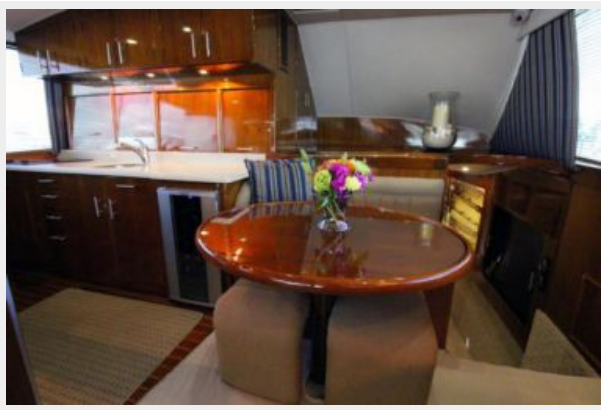
Disclaimer

The Company offers the details of this vessel or yacht in good faith but cannot guarantee or warrant the accuracy of this information nor warrant the condition of the vessel. A buyer should instruct his representatives, agents, or his surveyors, to investigate such details as the buyer desires validated. This vessel or yacht is offered subject to prior sale, price change, or withdrawal without notice.

PHOTOS

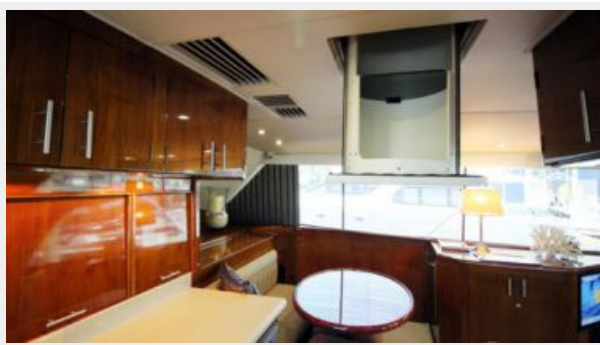




















CONTACTS

Andrey Shestakov, leading yacht broker of the sales department of Shestakov Yacht Sales Inc. Shestakov Yacht Sales Inc., the official representative of the Miami/Fort Lauderdale FL headquarters.

Contact details

Email:
andrey@shestakovyachtsales.com

Web: shestakovyachtsales.com/en/

Telephones

USA: **+1(954)274-4435**

Office hours

Monday – Saturday: **9:00 - 21:00 EDT**

Sunday: **closed**

Address



Harbour Towne Marina, 850 NE 3rd St,
STE 213, Dania, FL 33004