

ELEANOR — BERTRAM



Builder: BERTRAM

Year Built: 2009

Model: Sport Fisherman

Price: PRICE ON APPLICATION

Location: Mexico

LOA: 70' 0" (21.34m)

Beam: 18' 8" (5.69m)

Max Draft: 6' 0" (1.83m)

Our experienced yacht broker, Andrey Shestakov, will help you choose and buy a yacht that best suits your needs **Eleanor — BERTRAM** from our catalogue. Presently, at Shestakov Yacht Sales Inc., we have a wide variety of yachts available on our sale's list. We also work in close contact with all the big yacht manufacturers from all over the world.

If you would like to buy a yacht **Eleanor — BERTRAM** or would like help answering any questions concerning purchasing, selling or chartering a yacht, please call **+1(954)274-4435**

TABLE OF CONTENTS

TABLE OF CONTENTS	2
SPECIFICATIONS	3
Overview	3
Basic Information	3
Dimensions	3
Speed, Capacities and Weight	3
Accommodations	3
Hull and Deck Information	3
Engine Information	4
DETAILED INFORMATION	5
Fly Bridge	5
Stateroom	5
Salon	6
Galley	6
Cockpit	6
Mechanical	6
Standard Equipment	6
Exclusions	7
Disclaimer	7
PHOTOS	8
CONTACTS	16
Contact details	16
Telephones	16
Office hours	16
Address	16

SPECIFICATIONS

Overview

This beautiful Bertram is a step beyond a traditional tournament boat theme and the sweeping lines that define her one-piece house and bridge have become the trademark of the "new Bertram." "Eleanor" remains true to her convertible roots and she is the first Bertram to feature hull-side windows. Come and see her today.

Basic Information

Category: Sport Fisherman

Model Year: 2009

Year Built: 2009

Country: Mexico

Dimensions

LOA: 70' 0" (21.34m)

Beam: 18' 8" (5.69m)

Max Draft: 6' 0" (1.83m)

Speed, Capacities and Weight

Displacement: 93696.46135 Pounds

Water Capacity: 350 Gallons

Holding Tank: 160 Gallons

Fuel Capacity: 2008 Gallons

Accommodations

Total Cabins: 4

Total Heads: 4

Hull and Deck Information

Hull Material: Fiberglass

Engine Information

Engines: 2

Manufacturer: MTU

Model: 16V 2000

Engine Type: Inboard

Fuel Type: Diesel

DETAILED INFORMATION

Fly Bridge

- Radar FURUNO
- (1) Fishing probe mark NORTHSTOR 6100
- (1) Clarion stereo
- (2) Hydraulic Outriggers
- (1) Autopilot SIMRADAP25

Stateroom

All staterooms aboard the Bertram come equipped with

- LCD TVs
- Built-in digital alarm clocks
- Wall-to-wall carpeting

Master Stateroom

- Ample storage
- Built-in dressers and shelves,
- Cedar hanging locker
- Port & starboard nightstands
- Drawer storage beneath the oversized berth
- Large porthole lights on each side of the yacht
- Electrical curtains

Forward Stateroom

- Queen berth
- Lighted cedar hanging locker
- Port and starboard hullside storage shelves and upper cabinet storage
- Electrical curtains

Starboard guestroom

- Large twin side-by-side berths with storage beneath
- Four-drawer dresser with shelf
- Cedar hanging locker
- Nightstand with drawer
- Upper hullside cabinet storage
- Private access to its head
- Electrical curtains

Salon

- ICE MAKER with cooler for wine
- Washer and dryer
- Stern has 2 coolers and a freezer

Galley

- Refrigerator and freezer
- (1) KENYON 4-burner stove

Cockpit

- (1) wooden fishing chair
- (2) Compartments for fishing

Mechanical

- 2 Generators Kohler KW : 868 hours - 1118 hours
- Watermaker : Aquamiser
- Bow Thrusters
- Outrigger - Hydraulic
- The last service was on 25 November 2015 for the engines, generators and transmission

Standard Equipment

- Kahlenberg air horns
- Systems monitor w/ alarms
- Imron feature stripes
- Awlgrip decks
- (5) bilge pumps
- 10-HP bow thruster
- Port and starboard fuel fills
- Fuel-fill alarm
- (2) Glendinning CableMasters
- (4) Rod holders
- Delta T engine air intakes
- 84,000-Btu chilled-water A/C
- (2) 50-amp 24-volt and (1) 20-amp 12-volt converters
- (2) Isoboost transformers

-
- 42" LCD saloon TV w/ Bose Lifestyle Home Entertainment System
 - 15" LCD TVs in 2 guest staterooms
 - 20" LCD TV in VIP

Exclusions

Owner's personal belongings.

Disclaimer

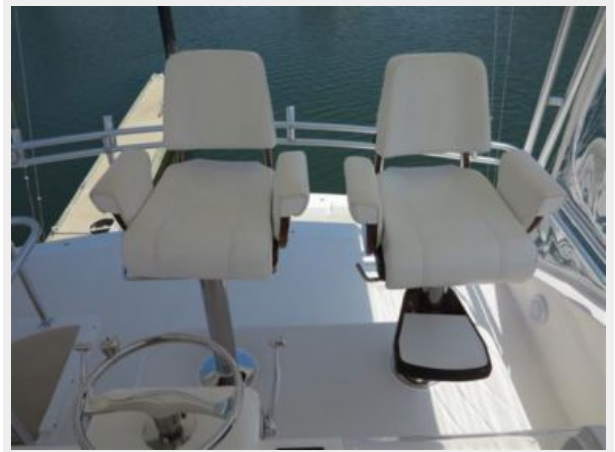
The Company offers the details of this vessel or yacht in good faith but cannot guarantee or warrant the accuracy of this information nor warrant the condition of the vessel. A buyer should instruct his representatives, agents, or his surveyors, to investigate such details as the buyer desires validated. This vessel or yacht is offered subject to prior sale, price change, or withdrawal without notice.

PHOTOS





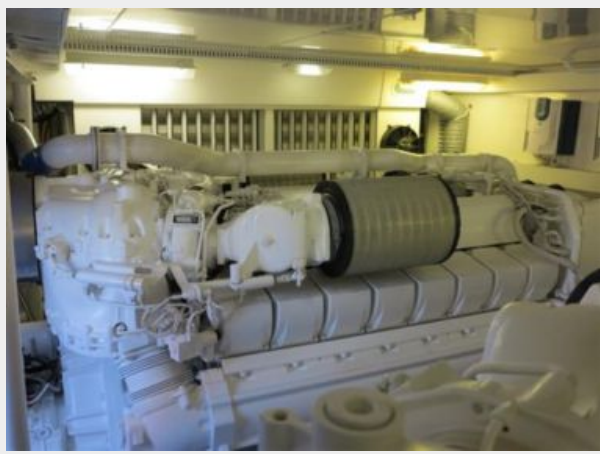












CONTACTS

Andrey Shestakov, leading yacht broker of the sales department of Shestakov Yacht Sales Inc. Shestakov Yacht Sales Inc., the official representative of the Miami/Fort Lauderdale FL headquarters.

Contact details

Email: andrey@shestakovyachtsales.com

Web: shestakovyachtsales.com/en/

Telephones

USA: +1(954)274-4435

Office hours

Monday – Saturday: **9:00 - 21:00** EDT

Sunday: **closed**

Address



Harbour Towne Marina, 850 NE 3rd St,
STE 213, Dania, FL 33004