

## ARTEMIS — MARQUIS



**Builder:** MARQUIS

**Year Built:** 2005

**Model:** Motor Yacht

**Price:** PRICE ON APPLICATION

**Location:** United States

**LOA:** 65' 0" (19.81m)

**Beam:** 17' 11" (5.46m)

**Min Draft:** 5' 9" (1.75m)

**Max Draft:** 5' 11" (1.80m)

**Cruise Speed:** 25 Kts. (29 MPH)

**Max Speed:** 30 Kts. (35 MPH)

Our experienced yacht broker, Andrey Shestakov, will help you choose and buy a yacht that best suits your needs **ARTEMIS — MARQUIS** from our catalogue. Presently, at Shestakov Yacht Sales Inc., we have a wide variety of yachts available on our sale's list. We also work in close contact with all the big yacht manufacturers from all over the world.

If you would like to buy a yacht **ARTEMIS — MARQUIS** or would like help answering any questions concerning purchasing, selling or chartering a yacht, please call +1(954)274-4435

# TABLE OF CONTENTS

TABLE OF CONTENTS	2
SPECIFICATIONS	7
Basic Information	7
Dimensions	7
Speed, Capacities and Weight	7
Accommodations	7
Hull and Deck Information	7
Engine Information	8
DETAILED INFORMATION	9
Vessel Walkthrough	9
Salon	9
Dining Area	10
Galley	10
Lower Helm Area	10
Companionway	11
VIP Cabin	11
VIP Head	12
Portside Guest Head	12
Portside Guest Cabin	12
Master Cabin	13
Master Head, Hers	13
Master Head, His	13
Foredeck	14
Aft Deck	14
Tender	14
Flybridge	15
Helm Area	15
Boat Deck	15

Crew Area	15
Engine Room	16
Electrical Equipment	16
2021 WORK COMPLETED ON ARTEMIS	16
Remarks	17
Exclusions	17
Disclaimer	17
Exclusions	17
Disclaimer	17
PHOTOS	19
Salon TV Up	19
Salon looking fwd	19
Salon Looking Aft	19
Salon Looking Forward	19
Salon Entertainment Center	19
Salon Sat TV & Engine Panels	19
Starboard Side Dining	20
Starboard Side Dining	20
Galley Looking Forward	20
Dining looking aft	20
Galley Looking Aft	20
Galley Looking Starboard	20
Helm Area	21
Starboard Side Entry Door	21
Lower Helm	21
Lower Helm Port	21
Lower Helm Center	21
Lower Helm Starboard	21
Steps to Below	22

Foyer	22
Foyer Looking Aft	22
VIP	22
VIP to Starboard	22
VIP to Port	22
Guest (Day) Head	23
VIP head	23
Portside Guest Cabin	23
Master entry	23
Master Size King Berth	23
Master Settee	23
Master Aft	24
Master ceiling detail	24
Master Laundry	24
Master Walk In Closet	24
Her Head	24
Vanity in Her Head	24
Shower/Tub Centerline	25
His head	25
Spacious Side Deck	25
Side Deck	25
Bow	25
Windlass Area	25
Aft Deck seating	26
Bow Area	26
Curved Entry Door	26
Aft deck Onyx table	26
Aft Deck Controls	26
Port & Starboard Warping Windlass	26

Easy Flybridge Steps	27
Hinged Boarding Gate	27
Transom	27
Transom Hydraulic Platform	27
Crew/Engine Room Access Door	27
Tender	27
Flybridge Entry	28
Flybridge Entry Hatch Closed	28
Salon Flybridge Stairs	28
Transom	28
Flybridge bar	28
Flybridge bar	28
Bar Equipment	29
Flybridge Settee	29
Flybridge Settee New Upholstery	29
Helm Seating	29
View Forward	29
Flybridge looking aft	29
Flybridge Helm	30
Helm to Port	30
Helm Center	30
Helm Starboard	30
Backup Engine Controls & Thrusters	30
Helm Outboard to Port	30
Helm Stereo	31
Crew/Engine Room Entry	31
Watertight Engine Room Door	31
Stbd engine	31
Starboard Cardon Shaft	31

---

Starboard Transmission	31
Port Transmission	32
Port engine	32
Engine Room Looking Aft	32
Watermaker (New)	32
AC System	32
Portside Panel	32
Iso Transformer	33
Main Engine Room Panel	33
Generator	33
Starboard Panel	33
Emergency Engine Room Access	33
Stbd stern	33
Evening	34
Tender on transom	34
Sistership at Sea	34
<b>CONTACTS</b>	<b>35</b>
Contact details	35
Telephones	35
Office hours	35
Address	35

---

# SPECIFICATIONS

---

## Basic Information

---

**Category:** Motor Yacht

**Sub Category:** Flybridge

**Model Year:** 2006

**Year Built:** 2005

**Country:** United States

**Vessel Top:** Arch

**Fly Bridge:** Yes

## Dimensions

---

**LOA:** 65' 0" (19.81m)

**Beam:** 17' 11" (5.46m)

**Min Draft:** 5' 9" (1.75m)

**Max Draft:** 5' 11" (1.80m)

## Speed, Capacities and Weight

---

**Cruise Speed:** 25 Kts. (29 MPH)

**Max Speed:** 30 Kts. (35 MPH)

**Water Capacity:** 200 Gallons

**Holding Tank:** 144 Gallons

**Fuel Capacity:** 1200 Gallons

## Accommodations

---

**Total Cabins:** 3

**Sleeps:** 6

**Total Heads:** 4

**Crew Cabin:** 1

## Hull and Deck Information

---

**Hull Material:** Fiberglass

**Deck Material:** Fiberglass

**Hull Configuration:** Semi Vee

---

## Engine Information

---

**Engines:** 2

**Manufacturer:** MTU

**Model:** 8V2000M93

**Engine Type:** Inboard

**Fuel Type:** Diesel



---

# DETAILED INFORMATION

---

## Vessel Walkthrough

---

Boarding ARTEMIS is easy from a floating dock, onto the unobstructed swim platform and up port or starboard Aft Deck stairs to a spacious Aft Deck.

The Aft Deck has built in seating and a fixed height teak table.

There are wide walk around side decks and comfortable stairs to the Flybridge.

The Salon is entered via a sliding door. There are four loose chairs and a three person sofa with coffee tables.

Interior stairs lead to the Flybridge. Next forward is a six person free standing dining table opposite the portside fully equipped Galley.

The optional Lower Station is centerline with a full helm and curved seating for three.

Steps to below are to starboard. A landing at the bottom leads to a VIP Cabin with private Head forward, a twin Lower Guest Cabin with a private Head which also serves as the Day Head.

Aft is the Master with a king size berth and separate His and Her Heads separated by a tub shower.

The spacious Flybridge has built in seating, a walk behind bar, full helm and a Boat Deck with tender aft.

## Salon

---

The Salon is entered via a stainless steel trimmed Trend curved sliding door on the starboard side. A sliding drape covers the full entry as needed.

Immediately to starboard are two off white swivel barrel chairs. Flanking a popup 40" Toshiba LCD TV that rises from a cherry cabinet.

To port upon entering is a leather off white club chair with footrest situated in front of the yacht's interior AC DC electrical panel. Next forward is a cabinet with a Marantz AM/FM/AV receiver, a Direct TV HD TV Sat receiver and a Sony Blue Ray player. A cabinet with engine start/controls and the Sat TV controls are above. A small cabinet for CD/DVD storage separate the matching three cushion off white leather sofa that has built in storage drawers below.

In front of the sofa are three brown leather nesting tables. Further forward is a matching leather

club chair with flip up footrest. A small storage cabinet is furthest forward.

Overhead is a cherry and vinyl ceiling pattern with eight halogen dimmable mini spots within. Also above are nine dimmable mini spots and soffit type AC delivery around the perimeter.

A five channel speaker system is built into the overhead with a hidden subwoofer below.

The sole is carpeted and the AC controls are digital SMX controls. Large cabin side windows with Roman shades are port and starboard. Also in the Salon is a CO detector.

---

## Dining Area

---

Separating the Dining Area from the Salon on the starboard side are seven open tread stairs that lead to the Flybridge Area.

Next forward is a six person high gloss cherry wood dining table with six cherry chairs. The table slides outboard on a fixed base when not in use to conserve space. Outboard of the table are four cherry cabinet doors for dishware storage. Above are two sets of cabin side windows, the lower one having Roman shades.

Opposite is the Galley.

---

## Galley

---

The Galley on ARTEMIS is open to the Salon and Dining Area. Features include:

Maytag stainless steel 2 door fridge freezer w/ice/water in door Sharp Carousel stainless steel built in microwave Under mount 2 section stainless steel sink Pull out spray faucet Princess Euro Kera 3 burner Ceran top cook top Custom stainless steel vent hood w/(2) work lights Miele stainless steel dishwasher (5) Under counter cherry storage cabinets One under counter cherry storage cabinet w/(3) drawers (4) Cherry drawers (10) Cherry overhead cabinets, some w/glass racks Uba Tuba bull nose edge granite countertop Uba Tuba floor tiles (2) Fixed side windows (6) Halogen mini spots

---

## Lower Helm Area

---

The Helm is centerline with a three panel windshield ahead and large side windows with a starboard side deck electrically operated opening door.

To port is a three to four person curved settee with a burlwood counter fore and aft. The entire area is one step up for better visibility.

The Helm Area contains the following equipment:

Wood helm wheel Centerline Garmin 12" 7612 plotter/radar (2) MTU LCD engine screens MTU electronic engine controls 7" Color Voyager camera monitor for Aft Deck & Engine Room camera Garmin 4" data GNX LCD depth/data/speed screen Garmin 4" GPH LCD autopilot panel Garmin GHS 10 handheld VHF w/remote speaker Sidepower integrated bow & stern thruster controls Trim tab controls w/digital indicator Key switches & start/stop buttons (3) Wiper/washer controls (5) Bilge pump switches w/indicator lights Windlass controls Windshield defogger controls Analog rudder angle indicator (2) Fuel tank gauges Ritchie 5" magnetic compass Red overhead light (2) Storage cabinets to starboard Large area under helm (crawl space) for storage & equipment access Swivel leather upholstered helm chair w/footrest

---

## Companionway

---

To starboard going forward are eight curved carpeted steps with step lights.

At the bottom is a granite floor design with light up LED lights.

Up one step forward is the VIP with private Head. To port is the Portside Cabin and the Portside Head.

Aft is the private Master Cabin. A lighted art niche is at the bottom of the stairs.

---

## VIP Cabin

---

All the way forward is the VIP Cabin with a centerline queen size berth. Two raised steps port and starboard make access easy. Below the berth is a large single storage drawer and rope lighting at the perimeter of the berth. The cabin also has a Jensen AM/FM/CD stereo, two speakers, a CO monitor and digital AC controls. Five storage cabinets surround the bed. The headboard is upholstered and includes a mirrored inset area with direct and indirect lighting as well as stereo speakers above. Both port and starboard are opening stainless steel portholes behind Roman shades.

Above the berth is a Bomar Foredeck escape hatch with a pull down ladder for emergencies.

Aft to both port and starboard are mirrored door cedar lined hanging lockers with shelves within, the port one having a digital safe inside.

On the aft bulkhead is a built in 24" Proscan LCD TV.

To starboard is access to the private Head.

---

## VIP Head

---

The VIP Head is accessed only from the VIP Cabin.

The bow front lacquered vanity has cherry trim, two cabinets below, a granite countertop, an under mount china sink and a two tone fixture above. A mirrored medicine cabinet is above the sink.

The toilet is a Tecma electric model with a holding tank full indicator.

The stall shower has a clear glass door, a seat, an opening frosted porthole, a light, an exhaust fan and a handheld or wall mounted fixture.

Also in the Head is a marble sole and four halogen mini spots above.

---

## Portside Guest Head

---

The Guest Head has two access doors, one from the centerline Companionway and the other from the Portside Guest Cabin. This allows the Head to serve as the Day Head as well.

The bow front lacquered vanity has cherry trim, two cabinets below, a granite countertop, an under mount china sink and a two tone fixture above. A mirrored medicine cabinet is above the sink.

The toilet is a Tecma electric model with a holding tank full indicator.

The stall shower has a clear glass door, a seat, an opening frosted porthole, a light, an exhaust fan and a handheld or wall mounted fixture.

Also in the Head is a marble sole and four halogen mini spots above.

---

## Portside Guest Cabin

---

The Portside Guest Cabin is entered from the forward end with two twin berths with a night table between facing forward.

A large Ultra Vinyl headboard wraps fully around both beds.

Outboard of the outboard berth is an opening stainless steel porthole behind Roman shades.

At the foot of the outboard berth is a cedar lined hanging locker with a Proscan 19" LCD TV facing the berth.

The access to the Guest Head is forward. The cabin also has a Jensen AM/FM/CD stereo, two stereo speakers, a CO monitor and digital AC controls.

---

## Master Cabin

---

Entered from the forward end the Master has an entrance area with two storage cabinets to port with a mirrored area and granite countertop lit from above.

Two steps down is the Master Cabin with a king size berth off the port bulkhead. One large storage drawer is at the front of the berth. Accent rope lighting surrounds the base of the berth as well as two other cabinets in the room. Each side of the berth has a nightstand with ample center counter space. Outboard of the upholstered headboard is a large open hull side window much too large to be called a porthole.

To the starboard side of the cabin is a huge walk in hanging locker large enough to include a full size Bosch washing machine and matching Bosch dryer. There is ample hanging space, a shoe rack and a cabinet for the laundry detergent.

Next aft is a two person loveseat upholstered in off white Ultra Leather. Aft of this is a bow front four drawer chest with a burlwood top and a Samsung 32" LCD TV mounted above.

Aft are the doors to the His and Her Heads separated by a two door cabinet with art niche and hidden rope lighting above.

Besides the ten overhead dimmable lights within the ceiling detail, ten additional dimmable halogen mini spots, four accent wall lights provide ample lighting. Also in the cabin are digital AC controls, a CO monitor, a Jensen AM/FM/CD player and a digital safe for valuables.

The AC controls are digital and the sole is carpeted.

---

## Master Head, Hers

---

To starboard is the Woman's Master Head with a curved vanity with storage cabinet below, an under mount china sink with a two tone fixture above a granite countertop.

The toilet is a Tecma model. The sole is granite tile. Three cherry cabinets offer lots of storage.

A vanity with an upholstered stool and vanity lights help dictate to gender of the Head.

---

## Master Head, His

---

To port is the Gentleman's Head with a curved vanity with storage cabinet below, an under mount china sink with a two tone fixture above a granite countertop.

The toilet is a Tecma model. The sole is granite tile. Three cherry cabinets offer lots of storage.

Accessed from either Head is a full size tub with three fiddled shelves, a handheld or wall mountable fixture and port and starboard access doors.

Each Head has ample lighting and an exhaust fan as well as an opening stainless steel porthole behind cell type shades.

## Foredeck

---

Fiberglass nonskid deck Raised fiberglass bulwarks Twin stainless cleats w/stainless hawse pipes on bulwarks Welded stainless steel bow rail Maxwell 4000 windlass w/chain gypsy, rope capstan & up & down foot switches Windlass is mostly below deck & accessed through a hinged hatch Stainless steel anchor chute Large CQR type anchor w/all chain rode (2) Large below deck fender storage wells Hinged access to Foredeck storage w/freshwater wash down spigot & hose Bow pennant staff Jabsco remote spotlight Recessed Sun Deck area w/removable cushions Bomar stainless steel trimmed deck hatch into VIP Cabin w/removable cover Stainless steel drink holders at bow sun pad (3) Pantograph windshield wipers & washers Black Sunbrella Textulene windshield cover (2) Deep Foredeck storage cuddies w/gas shock hinged lids on trunk cabin International Navigation lights Portside Pantograph entry door, electrically operated Frameless flush cabin windows port & starboard

## Aft Deck

---

Teak over fiberglass decks, teak extends to midship step on side decks Varnished teak table on twin stainless steel pedestals Fiberglass overhead to protect seating area from sun & rain (8) Overhead stainless steel trimmed DC lights on Aft Deck (6) Overhead stainless steel trimmed DC lights on side decks Trend stainless steel sliding Salon door Hidden lower controls w/electronic clutch & throttle & bow/stern thruster controls Fusion MS-NRX200i stereo remote (2) JL Audio overhead stereo speakers (2) Maxwell warping windlasses w/foot switches (2) Stainless steel Bollard type cleats Hinged portside cabinet w/freshwater wash down spigot & hot & cold shower Storage cabinets under warping windlasses Hinged starboard side cabinet w/salt water wash down Emergency fire pulls in starboard side cabinet Aft Deck newly upholstered bench seating for five to six people Besenzoni passerelle to port (2) 50 Amp 220 volt Glendinning cable masters for shore cords Marineco cable TV inlet Shore side water hookup Pantograph Crew/Engine Room door Hydraulic teak covered aft swim platform for tender storage (2) Bollard type aft cleats on fixed portion of platform Stainless sockets for swim ladder (6) Deck level courtesy lights Besenzoni passerelle controls (9) Teak steps to Flybridge (2) Aft facing docking lights overhead Aft facing camera (2) Stainless steel hinged gates at swim platform steps Port & starboard steps to swim platform

## Tender

---

13' Novurania50 HP Yamaha 4 stroke Console steering M304 Icom VHF Raymarine ST40

depth12V Battery12V Battery ChargerYamaha tach & speed gaugesFolding aft seatPort & starboard step padsSeat in front of consoleBow seat(3) Cup holdersBattery shutoff switchCourtesy lightsBow step padTender chocks on swim platform

## Flybridge

---

Fiberglass nonskid decking Hinged tinted plexiglass cover over steps Fiberglass radar arch (2) JL Audio stereo speakers in arch (2) DC overhead lights in arch 6 Bow stainless steel Bimini top that can fold when needed 10" JL Audio subwoofer Walk behind bar w/Corian top, (2) storage cabinets below, Isotherm drink fridge, Raritan icemaker (both behind FRP doors) & Gaggenau cooktop above 6 -7 Person settee, newly upholstered to starboard side Large FRP table on twin stainless steel bases (7) Low level courtesy lights Railing around Aft Deck steps Hinged gate to Boat Deck Several stainless steel drink holders Sliding entry door to cabin w/weather cover Stainless steel trimmed windshield w/Venturi addition Radar arch on top of boat's arch for radar mount Garmin open array radar scanner KVH M5 Trac Vision sat dome

## Helm Area

---

(3) Upholstered helm seats, Captain's w/footrest (2) MTU LCD gauge panels MTU electronic engine controls Garmin 741 XS plotter touch screen (2) Garmin 7612 plotter/radar/sounder Garmin 4" GNX LCD depth/data/speed screen Garmin 4" GHP LCD autopilot panel Garmin GHS 10 VHF radio Side Power integrated bow/stern thruster controls Jabsco remote searchlight control MTU emergency backup control Fusion UD750 stereo AM/FM/Bluetooth QL trim tabs w/indicator Exhaust system alarm (5) Bilge pump switches w/indicator lights Fireboy engine shutdown override switch 12 Volt accessory outlet Wood helm wheel (2) Fuel tank gauges Analog rudder angle indicator Key switches & start/stop buttons Wood look dash panels JL 10" subwoofer (2) 2 Stage JL stereo speakers Storage cabinet portside of Helm Helm cover

## Boat Deck

---

Immediately aft of the Flybridge area and on the same level is the Boat Deck.

Equipment includes:Airmar 8 person life raft (not in certification)Nautical structures 600 lb. davit w/cover & wired remote control

## Crew Area

---

Presently used for storage, the Crew Area could easily be used for single accommodations again.

Equipment includes: (3) Fiberglass nonskid steps w/top two hinged for rudder room access

Portside head w/electric toilet, stainless steel sink, handheld shower, vanity w/(2) storage cabinets below & and a hanging locker inboard, all behind a clear glass door & sidelight.

A single berth area is to starboard with a cabinet further outboard containing the Onan generator and associated equipment.

In an outboard cabinet to starboard is a new Village Marine 600 GPD watermaker (2) Charles transformers Shore power inlet breakers Fireboy fire bottle for this area

## Engine Room

(2) 1200 HP 8V2000 MTU M93(2) ZF 550V 2.91 transmissions/V drives Carden shaft w/stainless steel cover(2) 2400 BTU Cruiseair compressor(2) 1600 BTU Cruiseair compressor Rack for A/C units doubles as a workbench w/vise Dual Racor 1000 fuel filters for each engine 83 lb. Fireboy bottle for engine room Fiberglass underwater exhaust w/bypass tube Grundfos ¾ HP freshwater pump Two Stage house freshwater filtration system 5 Point Reverso oil change system (2) Large Groco SE series engine sea strainers 4 Step stainless steel ladder w/hatch from Aft Deck for at sea engine room access Engine room camera (8) Overhead fluorescent engine room lights Diamond plate engine room sole centerline (2) 220 Volt engine room blowers Racor 500 fuel filter for generator Small Fireboy canister for generator room (starboard) Small Fireboy canister for equipment room (port) Generator muffler Hydraulic power pack for swim platform Hydraulic power pack for passerelle Power steering pump Watertight door from crew quarters to engine room

## Electrical Equipment

12/24 Volt DC electrical system 12/24 Volt AC electrical system 240V AC Bus 1 panel w/(24) breaker protected circuits 240V AC Bus 2 panel w/(11) breaker protected circuits 24V DC Bus 1 w/(62) breaker protected circuits (9) Guest battery rotary switches (16) Hi amp circuit breakers for large draw items (2) Engine power distribution panels w/rotary switches & start/stop buttons Mastervolt 24V 75 amp port engine battery charger Mastervolt 24V 75 amp starboard engine battery charger Mastervolt 24V 100 amp house battery charger Mastervolt 12 volt generator battery charger Inverter/bypass switch Onan 26 KW generator w/1553 hours in sound shield - (Aug 13, 2020) One 50 amp 12 KVA Charles Iso Boost transformer One 50 amp 12 KVA Charles Iso transformer

## 2021 WORK COMPLETED ON ARTEMIS

- 2 Coats of anti fouling • Prop speed • Replace aft cutlass bearings • Install (8) blue/white LED Sea Blaze underwater lights • Check and repair bonding system continuity • Remove, inspect and reseal props on shafts • Replace transmission cooler sea valve • Renew caulk on house windows and aft door • Replace steering cylinder • Replace water maker high pressure pump • Replace water maker thru-hull • Annual fire service • Rebuilt circuit boards on MTU engine controls •



Service port & starboard gear box coolers• Overhaul generator cooling system including: heat exchanger, belts, hoses, sound insulation and added a freshwater flush system• New FB Fusion stereo• (2) New aft deck docking capstans• New black Bimini topThe above work totaled \$63,100.00.

---

## Remarks

---

ARTEMIS is a low hour version of the very popular 65/69 Marquis MY. She is in excellent condition and offers three en suite Cabins, a Lower Helm and a Dining Area usually not found on yachts of their size.

She has both a Boat Deck crane and a hydraulic swim platform to offer many options for tender carrying. Her Garmin electronics are new and she is ready to cruise.

---

## Exclusions

---

While every effort was made to list all pertinent included equipment aboard ARTEMIS, there are some personal belongings aboard. Prospective purchasers should assume any item not specifically mentioned herein will not convey at closing.

---

## Disclaimer

---

Specifications are provided for informational purposes only. Data was obtained from sources believed reliable but is not guaranteed by owner or brokers. Buyer assumes responsibility to verify all speeds, capacities, consumption's and other measurements contained herein and otherwise provided and agrees to instruct his agents to confirm such details prior to purchase. Vessel is subject to prior sale, price and inventory changes and withdrawal from market without notice.

---

## Exclusions

---

Owner's personal belongings.

---

## Disclaimer

---

The Company offers the details of this vessel or yacht in good faith but cannot guarantee or warrant the accuracy of this information nor warrant the condition of the vessel. A buyer should

instruct his representatives, agents, or his surveyors, to investigate such details as the buyer desires validated. This vessel or yacht is offered subject to prior sale, price change, or withdrawal without notice.

# PHOTOS

**Salon looking fwd**



**Salon TV Up**



**Salon Looking Aft**



**Salon Looking Forward**



**Salon Entertainment Center**



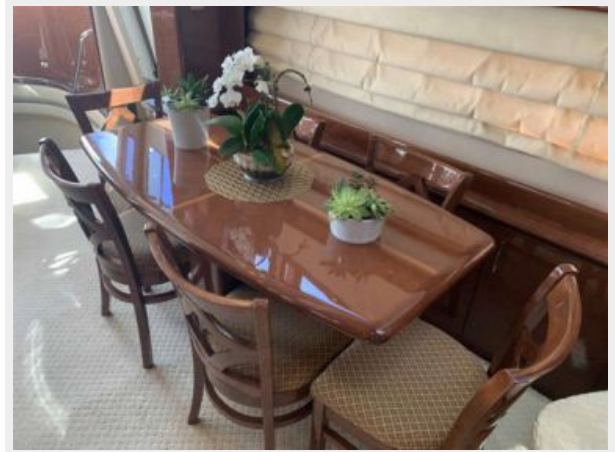
**Salon Sat TV & Engine Panels**



**Starboard Side Dining**



**Starboard Side Dining**



**Dining looking aft**



**Galley Looking Forward**



**Galley Looking Aft**



**Galley Looking Starboard**



**Helm Area**



**Starboard Side Entry Door**



**Lower Helm**



**Lower Helm Port**



**Lower Helm Center**



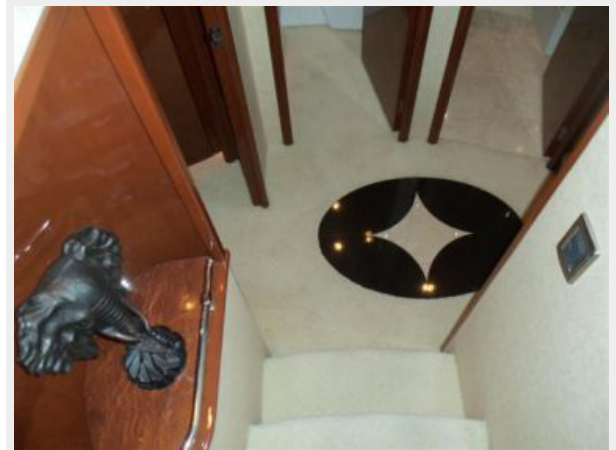
**Lower Helm Starboard**



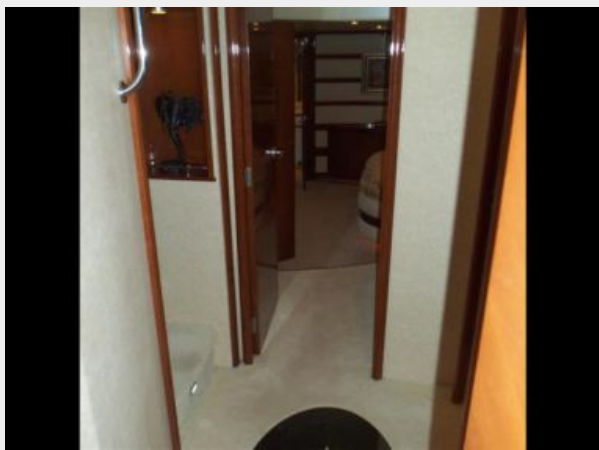
**Steps to Below**



**Foyer**



**Foyer Looking Aft**



**VIP**



**VIP to Starboard**



**VIP to Port**



**VIP head**



**Guest (Day) Head**



**Portside Guest Cabin**



**Master entry**



**Master Size King Berth**



**Master Settee**



**Master ceiling detail**



**Master Aft**



**Master Laundry**



**Master Walk In Closet**



**Her Head**



**Vanity in Her Head**





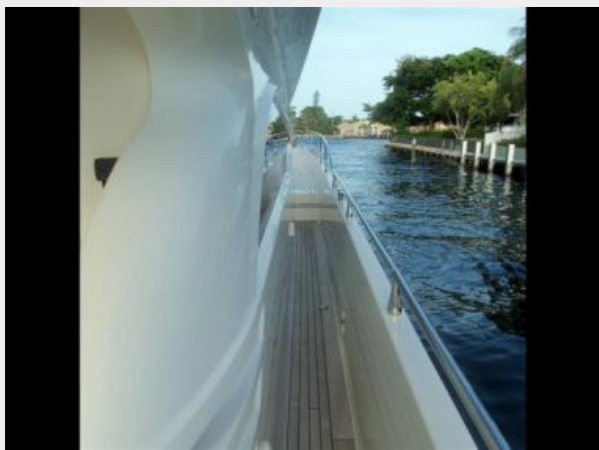
**Shower/Tub Centerline**



**His head**



**Spacious Side Deck**



**Side Deck**



**Bow**



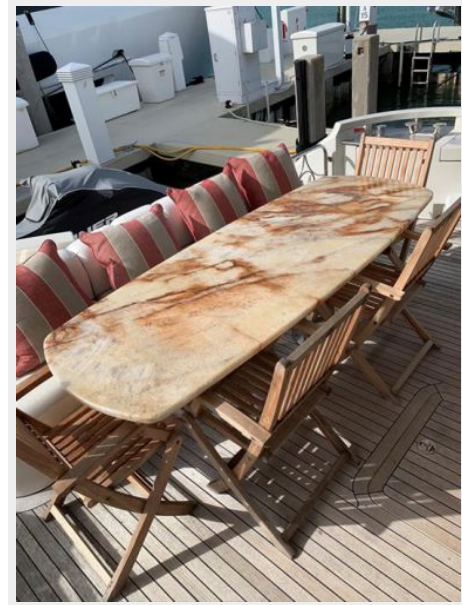
**Windlass Area**



**Bow Area**



**Aft Deck seating**



**Aft deck Onyx table**



**Curved Entry Door**



**Aft Deck Controls**



**Port & Starboard Warping Windlass**



**Easy Flybridge Steps**



**Hinged Boarding Gate**



**Transom**



**Transom Hydraulic Platform**



**Tender**



**Crew/Engine Room Access Door**



**Flybridge Entry**



**Flybridge Entry Hatch Closed**



**Salon Flybridge Stairs**



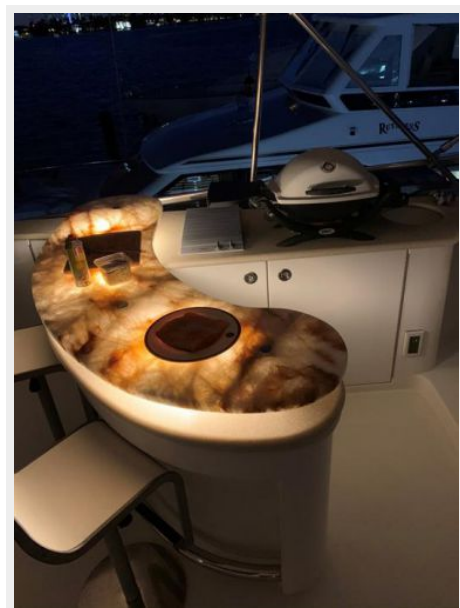
**Transom**



**Flybridge bar**



**Flybridge bar**



**Bar Equipment**



**Flybridge Settee**



**Flybridge Settee New Upholstery**



**Helm Seating**



**Flybridge looking aft**



**View Forward**



**Flybridge Helm**



**Helm to Port**



**Helm Center**



**Helm Starboard**



**Backup Engine Controls & Thrusters**



**Helm Outboard to Port**



**Helm Stereo**



**Crew/Engine Room Entry**



**Watertight Engine Room Door**



**Stbd engine**



**Starboard Cardon Shaft**



**Starboard Transmission**



**Port engine**



**Port Transmission**



**Engine Room Looking Aft**



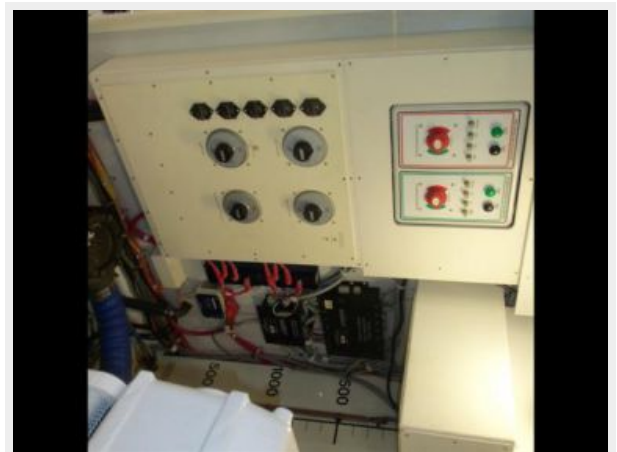
**Watermaker (New)**



**AC System**



**Portside Panel**





**Iso Transformer**



**Main Engine Room Panel**



**Generator**



**Starboard Panel**



**Emergency Engine Room Access**



**Stbd stern**



**Tender on transom**



**Evening**



**Sistership at Sea**



---

# CONTACTS

---

Andrey Shestakov, leading yacht broker of the sales department of Shestakov Yacht Sales Inc. Shestakov Yacht Sales Inc., the official representative of the Miami/Fort Lauderdale FL headquarters.

---

## Contact details

---

Email: [andrey@shestakovyachtsales.com](mailto:andrey@shestakovyachtsales.com)

Web: [shestakovyachtsales.com/en/](http://shestakovyachtsales.com/en/)

---

## Telephones

---

USA: +1(954)274-4435

---

## Office hours

---

Monday – Saturday: **9:00 - 21:00** EDT

Sunday: **closed**

---

## Address

---



Harbour Towne Marina, 850 NE 3rd St,  
STE 213, Dania, FL 33004