

SATISFACTION — AZIMUT



Судостроитель: [AZIMUT](#)

Год постройки: 2015

Модель: Моторная яхта

Цена: ЦЕНА ЯХТЫ ПО ЗАПРОСУ

Местонахождение: United States

Длина общая: 84' 0" (25.60m)

Ширина: 21' 2" (6.45m)

Мин. осадка: 5' 10" (1.78m)

Макс. осадка: 5' 10" (1.78m)

Купить **SATISFACTION — AZIMUT** а также выбрать подходящую вам яхту из нашего каталога яхт вам поможет опытный яхтенный брокер Андрей Шестаков. На сегодняшний день компания **Shestakov Yacht Sales Inc.** имеет большое количество яхт в собственном списке продаж, а также тесно сотрудничает со всеми крупными яхтенными производителями по всему миру.

Для того чтобы купить яхту **SATISFACTION — AZIMUT** а также проконсультироваться по любому вопросу связанному с покупкой, продажей, чартером яхт позвоните по телефону **+7(918)465-66-44**.

ОГЛАВЛЕНИЕ

ОГЛАВЛЕНИЕ	2
ХАРАКТЕРИСТИКИ	4
Обзор	4
Основная информация	4
Размеры	4
Скорость, вместимость и масса	4
Размещение	4
Корпус и палуба	5
Информация о двигателе	5
ПОДРОБНОЕ ОПИСАНИЕ	6
US Package	6
Exterior	7
Aft Deck	8
Bow	8
Flybridge	8
Transom	9
Interior	9
Salon	9
Bar Area	10
Wheel House	10
Galley	11
Day Head	11
Master Cabin	11
Guest Foyer	12
VIP Cabin	12
Portside Guest Cabin	12
Starboard Guest Cabin	13
Crew Area	13

Captains Cabin	14
Crew Cabin	14
Aft Cockpit	14
Engine Room and Mechanical Systems	15
Warranty Information	15
Исключения	15
Отказ от ответственности	15
ФОТОГРАФИИ	16
КОНТАКТЫ	31
Контактная информация	31
Телефоны	31
Время работы	31
Адрес	31

ХАРАКТЕРИСТИКИ

Обзор

Brand new to the market. This stunning Azimut has just been made available for sale and is an excellent opportunity to own an “America’s Edition” of the Azimut 84 Fly at a drastically reduced price. Exterior styling & concept by Stefano Righini and custom décor designed by Ada Vioglio. Custom options include a 4 stateroom layout with a full beam master and 3 VIP staterooms, Zero Speed Stabilization, Over the top audio visual system throughout the boat and much much more. Please don’t miss the chance to see this beautiful yacht.

Основная информация

Тип судна: Моторная яхта

Подкатегория: Flybridge

Модельный год: 2015

Год постройки: 2015

Страна: United States

Открытая палуба мостика: Да

Размеры

Длина общая: 84' 0" (25.60m)

Ширина: 21' 2" (6.45m)

Мин. осадка: 5' 10" (1.78m)

Макс. осадка: 5' 10" (1.78m)

Скорость, вместимость и масса

Водоизмещение: 165346.6965 Pounds

Вместимость воды: 356 Gallons

Объем топливного бака: 1795 Gallons

Размещение

Всего кают: 4

Всего ком. состава: 6

Каюты экипажа: 2

Корпус и палуба

Материал корпуса: Fiberglass

Комплектация корпуса: Modified V-Hull

Информация о двигателе

Двигатели: 2

Производитель: MAN

Модель: V12 1800

Тип топлива: Diesel

ПОДРОБНОЕ ОПИСАНИЕ

US Package

- 220 /110 V - 60 Hz electrical system
- Two 60 Hz generators(2 x 32kw)
- Two 220/110 V shore power connections
- GFCI for outlets placed externally, in the technical areas, in the heads and in galley
- Two Glendenning cable masters (65' long)
- Additional battery charger for generator batteries
- Spare breakers (6 x 12/24 V - 6 x 110/220 V) (Six)
- Dimmers switches for salon and cabins
- Tropical A/C Cruisar with SMX controls (144,000 BTU)
- Cruisair air treating system
- VHF with US channels
- Flybridge hardtop
- Hull side rub rail in rubber and stainless steel on the side cigars and around the swim platform
- Four bulwark side gates
- Midship cleats, one each side (one pair)
- Bow thruster screen
- Oil change system for engines, generators and invertors
- Central vacuum system
- Double Racor filters for main engines
- Double Racor filter for generators
- Spare grey water pump (not installed)
- Spare black water pump (not installed)

- 24 V back up water pump (not installed)
- Spare A/C pump (not installed)
- US fittings for fresh water dock connection
- NTSC TV tunerok
- Trash compactor in galley
- Six 50' dock lines
- Supply:
 - 4 pounds' gelcoat,
 - transparent polyester for furniture,
 - furniture lacquer paint.
- Engine synchronizer controls
- CO2 fire extinguishing system for engine room
- Washdown connection on Flybridge through sink plumbing
- Garage ventilation
- Shore connection warning light
- Common grounding conductor between engines
- Bow sunbathing cushions with railing
- "Diesel" in lieu of "Fuel" on fueling cap

Exterior

- Arctic White Gel Coat with Dual Two Color Boot Stripe
- Deck Lighting Walkways, Swim Platform, Arch, Interior Guest Cabins
- 22 Underwater Lights with 2 Switches
- Solid Teak On All Areas
- Additional Midship Cleats
- Double Cable Master On Stern

Aft Deck

- Refrigerator
- Aft Deck Bar Cabinet
- Fresh Water Washdown
- Upgraded Marquipt Carbon Fiber Stairs
- 32" LED Samsung TV
- Sirius Decoder SR-H2000
- Direct TV HR25 HD Receiver
- Bose SA -3 Amplifier
- Pair Of Speakers FUSION MS- FR602
- Bose RC- 3582 Remote Control
- Audio Splitter 2in/10out
- Waterproof Audio/Visual Socket
- Xantech Infrared Sensor DL85K 1in/4out

Bow

- SS Anchor and Chain 450FFT with 2 Counters
- Dual Shore Power - Bow-Stern
- Bow Entry Cut into Bow Rail
- Extra Set Fairleads in Bow
- Fresh Water Washdown

Flybridge

- SS Spotlight, Horn and Flagpole
- Umbrella with Two Deck Mounts
- Ice Maker
- Refrigerator
- Custom Aft Seating
- 4 Lounge Chairs
- 4 Bar Stools - Upper Bar
- 4 Deck Chairs
- Fresh Water Washdown

- 2 HDTV 7 Domes
- FLIR Dual Controls - Upper and Lower Stations
- 32" LED Samsung TV
- Sirius Decoder SR-H2000
- Direct TV HR25 HD Receiver
- Apple TV
- Apple I-PAD Wifi 16GB
- I-Pad Dock Station
- Bose SA -3 Amplifier
- Pair Of Speakers FUSION MS- FR602
- Bose Subwoofer FUSION MS- SW10
- Bose RC- 3582 Remote Control
- Waterproof Audio/Visual Socket
- Xantech Infrared Sensor DL85K 1in/4out
- Platinum GS Series Navigation Package with SAT Weather
- Additional Radar Arch
- Upgraded Fuel Gauges - Bridge

- S/S Flybridge Steering Wheel

- Custom Upgraded BBQ on Bridge

Transom

- Swim Platform Cleats
- Gangway - Passarelle
- Dual Shore Power - Bow - Stern

Interior

- Dimmers Throughout Entire Boat

- Custom Carpets
- All Heads With A/C and Speakers
- 11 TVS Throughout Boat
- Custom Covers and Runners
- Central Vacuum
- Additional Lighting Outlets - LED

Salon

- Custom Covers and Runners
- Intercom Phone System
- Wine Cooler
- Additional Soundproofing in Salon

- Glass Cabinet - Custom Fit To Hold Stemware

- Scones in Hall Way, Salon and Master Cabin
- Custom Lamps

- 46" LED Samsung TV
- Sony Blue Ray Player
- Bose Lifestyle V35 Black
- Bose UB-20 Speaker Brackets
- Apple TV
- Apple I-PAD Wifi 16GB
- I-Pad Dock Station
- Apple MAC Mini Mac with OS X Server
- Apple Key Board and Mouse
- NAS Thunderbolt System 4TB (1 x 1TB) Raid System
- 5KW UPS
- Sirius Decoder SR-H2000
- Xantech Infrared Sensor DL85K 1in/4out
- Direct TV HR24 HD/DVR Receiver
- Cooling Fan

Bar Area

- 26" LED Samsung TV
- TV Bracket
- Pair Of Speakers B&W CCM 362
- Apple TV
- Xantech Infrared Sensor DL 85K 1in/4out
- Direct TV HR24 HD/DVR Receiver
- Sirius Decoder SR- H2000
- Bose Sa-3 Amplifier
- Bose RC-3582 Remote Control
- Pair Of Speakers FUSION MS- FR602

Wheel House

- FLIR Dual Controls - Upper and Lower Stations

Platinum GS Series Navigation Package with CAT Weather

- PLATINUM GS Series Navigation Package with SA I weather
- Interior Helm Steering Wheel Leather
- Wood Floors in Dinette, Galley and Wheel House
- Bose SA-3 Amplifier
- Pair Of Speakers B&W CCM362

Galley

- Custom Opening To Galley With backlight Stone Work
- 3 Custom Bar Stools
- Garage / Pantry Pullouts in Galley
- Custom Marble Top
- Custom Backlit Backsplash Stone Work
- Intercom Phone
- Miele Appliances
- Garage Disposal
- Ice Maker
- Wood Floors

Day Head

- Custom Marble Floors
- Custom Marble Trim Around Frame Ceiling
- A/C and Speakers in Head

Master Cabin

- Custom Sconces
- Inner Spring Mattress
- Safe
- Black Out Shades
- Custom Lamps
- Intercom Phone System

- Magnify Mirrors X2 with Lamps

- Stainless Steel Shower Doors
- 46" Samsung LED TV
- TV Bracket
- Sony Blue Ray Player
- Bose Lifestyle V35 BLACK

- Bose UB-20 Speaker Brackets
- Apples TV
- Apple I-PAD Wi- Fi 18GB
- iPad Dock Station
- Sirius Decoder SR- H2000
- Xantech Infrared DL65K 1in/4out
- Direct TV HD/DVR Receiver

Guest Foyer

- Custom Carpets
- Custom Covers and Runners
- Washer Dryer Separate Units - Stacked

VIP Cabin

- Inner Spring Mattress
- Safe
- Custom Marble Floors in Head
- Hydraulic Pistons Under VIP
- Make Up Vanity
- Blackout Shades
- Intercom Phone System
- Stainless Steel Shower Doors
- 32" Samsung LED TV
- TV Bracket
- Sony Blue Ray Player
- Bose Lifestyle V35 BLACK
- Bose UB-20 Speaker Brackets
- Apples TV
- Apple I-PAD Wi- Fi 16GB
- iPad Mini Dock Station
- IPAD Dock Station
- Sirius Decoder SR- H2000
- Xantech Infrared DL65K 1in/4out
- Direct TV H25 HD Receiver

Portside Guest Cabin

- Custom Marble
- Two Twin Size Beds With Inner Spring Mattress That Can Convert Into Queen

- Custom Carpets
- Custom Covers and Runners
- Safe
- Blackout Shades
- Marble Floors in Head
- Intercom Phone System
- 32" Samsung LED TV
- TV Bracket
- Sony Blue Ray Player
- Bose Lifestyle V35 BLACK
- Bose UB-20 Speaker Brackets
- Apple TV
- Apple I-PAD Mini Wi- Fi 16GB
- iPad Dock Station
- Xantech Infrared DL65K 1in/4out
- Direct TV H25 HD Receiver

Starboard Guest Cabin

- Custom Marble
- Queen Size Inner Spring Mattress
- Custom Carpets
- Custom Covers and Runners
- Safe
- Blackout Shades
- Marble Floors in Head
- Intercom Phone System
- 32" Samsung LED TV
- TV Bracket
- Sony Blue Ray Player
- Bose Lifestyle V35 BLACK
- Bose UB-20 Speaker Brackets
- Apple TV
- Apple I-PAD Mini Wi- Fi 16GB
- iPad Dock Station
- Xantech Infrared DL65K 1in/4out
- Direct TV H25 HD Receiver

Crew Area

- Safe
- Hydraulic Pistons Under Crew and VIP

- 4 Camera Screens - To be viewed in Captains Quarters
- Intercom Phone System
- Monitoring System Display In Crew Quarters
- 22" Samsung LED TV
- TV Bracket
- DVD /CD/Radio Teac DRH 3381
- Pair Of Speakers Sony XSF - 1327
- Direct TV H25 Receiver

Captains Cabin

- 22" Samsung LED TV
- TV Bracket
- Sound stream VDVD 311 Car Stereo
- Pair Of Speakers Sony XSF - 1327
- Direct TV H25 Receiver
- Cypress HDMI Splitter 1in/4out
- Xantech Infrared DL85K 1in/4out

Crew Cabin

- 22" Samsung LED TV
- TV Bracket
- Sound stream VDVD 311 Car Stereo
- Pair Of Speakers Sony XSF - 1327
- Xantech Infrared DL85K 1in/4out
- Direct TV H25 Receiver

Aft Cockpit

- 32" LED Samsung TV
- Sirius Decoder SR-H2000
- Direct TV HR25 HD Receiver
- Bose SA -3 Amplifier
- Pair Of Speakers FUSION MS- FR602
- Bose RC- 3582 Remote Control
- Audio Splitter 2in/10out
- Waterproof Audio/Visual Socket
- Xantech Infrared Sensor DL85K 1in/4out

Engine Room and Mechanical Systems

- Hydraulic Bow Thruster
- Wifi Booster and Cell Booster
- Zero Speed Stabilization
- Watermaker
- Humphries ATOS

Warranty Information

- 10 Year Structural Warranty From Azimut - Benetti

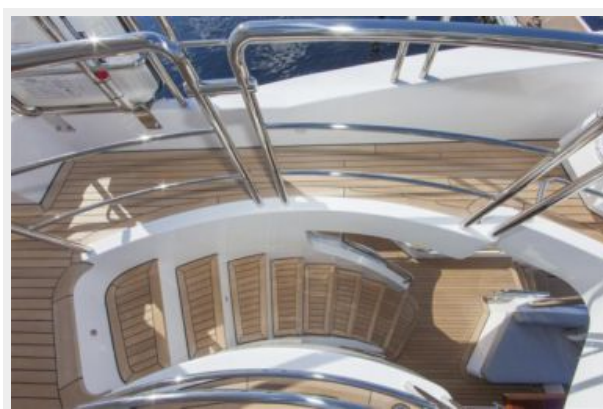
Исключения

При продаже яхты исключаются личные вещи владельца.

Отказ от ответственности

Компания предоставляет описание судна или яхты добросовестно, но не может гарантировать точность этой информации, а также не ручается за техническое состояние. Покупатель должен проинструктировать своих агентов или оценщиков исследовать представленную информацию более подробно, по собственному желанию. Продажа судна или яхты, изменение цены или снятие с продажи будет происходить без предварительного уведомления.

ФОТОГРАФИИ









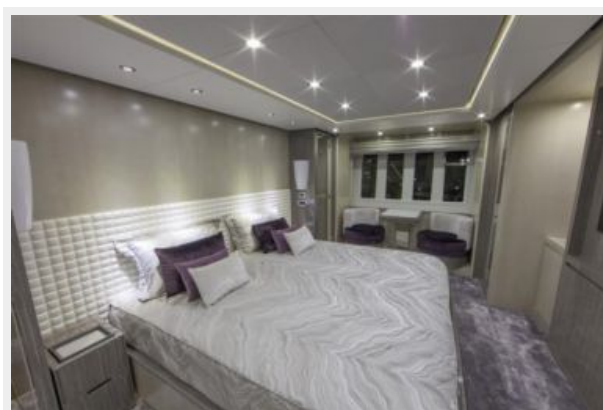






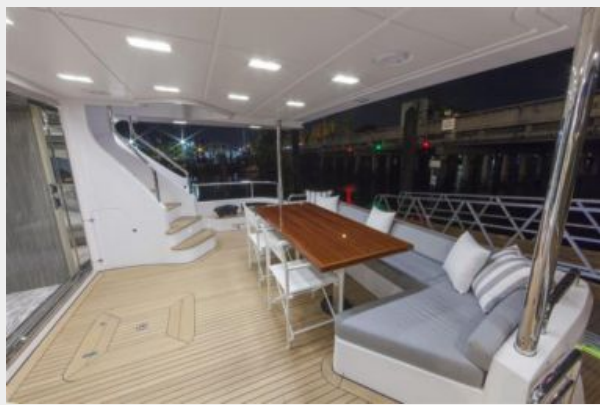
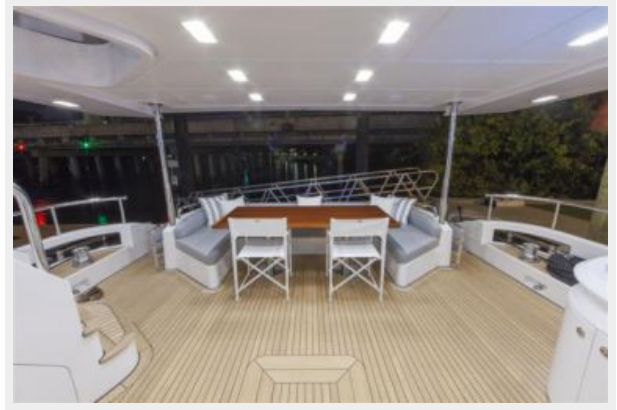
















КОНТАКТЫ

Андрей Шестаков (Andrey Shestakov) – ведущий яхтенный брокер отдела продаж яхт и судов компании Shestakov Yacht Sales Inc. Официальный представитель Shestakov Yacht Sales Inc. для русскоговорящих клиентов в центральном офисе компании в Майами/Форт Лодердейл/Флорида/США.

Контактная информация

Email: andrey@shestakovyachtsales.com

Web: shestakovyachtsales.com

Телефоны

Краснодарский край: **+7(918)465-66-44**

США, Майами, Флорида: **+1(954)274-4435**

Время работы

Понедельник – Суббота: **9:00 - 21:00**
EDT

Воскресенье: **Закрето**

Адрес



Harbour Towne Marina, 850 NE 3rd St,
STE 213, Dania, FL 33004