

MISS BLUE — GRAND BANKS



Судостроитель: GRAND BANKS

Год постройки: 1995

Модель: Траулер

Цена: ЦЕНА ЯХТЫ ПО ЗАПРОСУ

Местонахождение: United States

Длина общая: 42' 0" (12.80m)

Ширина: 14' 8" (4.47m)

Купить **Miss Blue — GRAND BANKS** а также выбрать подходящую вам яхту из нашего каталога яхт вам поможет опытный яхтенный брокер Андрей Шестаков. На сегодняшний день компания **Shestakov Yacht Sales Inc.** имеет большое количество яхт в собственном списке продаж, а также тесно сотрудничает со всеми крупными яхтенными производителями по всему миру.

Для того чтобы купить яхту **Miss Blue — GRAND BANKS** а также проконсультироваться по любому вопросу связанному с покупкой, продажей, чартером яхт позвоните по телефону **+7(918)465-66-44**.

ОГЛАВЛЕНИЕ

ОГЛАВЛЕНИЕ	2
ХАРАКТЕРИСТИКИ	4
Основная информация	4
Размеры	4
Скорость, вместимость и масса	4
Размещение	4
Корпус и палуба	4
Информация о двигателе	4
ПОДРОБНОЕ ОПИСАНИЕ	5
1995 42 Grand Banks Classic	5
Исключения	10
Отказ от ответственности	10
ФОТОГРАФИИ	11
Salon	11
Salon	11
Salon	11
Salon	11
Master Stateroom	11
Master Stateroom	11
Master Head	12
Guest Stateroom	12
Guest Stateroom	12
Guest Head	12
Lower Helm	12
Lower Helm	12
Seating	13
Upper Helm	13
Electric Boom	13

Upper Helm	13
Engine Room	13
Engine Room	13
Engine Room	14
Engine Room	14
Engine Room	14
Engine Room	14
Starboard	15
Stern	15
КОНТАКТЫ	16
Контактная информация	16
Телефоны	16
Время работы	16
Адрес	16

ХАРАКТЕРИСТИКИ

Основная информация

Тип судна: Траулер

Подкатегория: Fast

Модельный год: 1995

Год постройки: 1995

Страна: United States

Размеры

Длина общая: 42' 0" (12.80m)

Ширина: 14' 8" (4.47m)

Скорость, вместимость и масса

Водоизмещение: 36000 Pounds

Вместимость воды: 265 Gallons

Объем топливного бака: 600 Gallons

Размещение

Всего кают: 2

Корпус и палуба

Материал корпуса: Fiberglass

Информация о двигателе

Двигатели: 2

Производитель: Caterpillar

Модель: 3116

ПОДРОБНОЕ ОПИСАНИЕ

1995 42 Grand Banks Classic

"Miss Blue" is a beautiful example of one of the most popular boats of all time, the Grand Banks 42 Classic. The 42 GB has long defined what many people think of when the term "trawler" is used and with good reason. These boats are proven cruising vessels with timeless style, safe and efficient design, comfortable and roomy layout, and top quality construction.

"Miss Blue" has seen excellent care by her knowledgeable owners and it shows inside and out. The gelcoat and brightwork shine, the interior is fresh and inviting and there have been numerous updates throughout.

With her 3116 CATs, "Miss Blue" can cruise very efficiently but also has the ability to run 18 knots if needed.

Options and updates:

- **All exterior teak was re-varnished 7/2016**
- **2011 Garmin electronics at upper and lower helm with HD radar and new transducer**
- **New 2016 batteries**
- **2012 two new VHF's at upper and lower helm**
- **2011 Inverter system**
- **2011 Xantrex monitoring system**
- **2011 WiFi booster**
- **2011 Magma BBQ grill**
- **2010 New salon aircon system, blackout covers for all windows and covers for exterior upholstery, many more updates and upgrades see full specs.**

Vessel Walkthrough

Guest cabin forward with V-berth (filler section for larger sleeping area), solid teak parquet sole and en-suite head with shower (Teak grates), vacuflush toilet and large beveled mirror. The salon offers a straight line galley forward to port, lower helm opposite to starboard. Headliners in perfect condition. Aft of helm is a dry bar, a large upholstered L-shaped settee with corner table top/storage and classic GB teak table with two extendable leafs. Window draperies throughout. Opposite the salon table, on the port side, is a 2-person upholstered settee with corner built-in freezer. Surround sound speakers with AM/FM/CD/satellite radio. Storage under all settees.

Teak overhead grab rail runs entire length of salon. The aft Master cabin features a centerline island queen berth, and two large hanging lockers forward. Many drawers including large drawers under queen berth. Beveled mirror. Solid teak parquet sole. The head is a very functional “split-head” in that the shower stall is on starboard with head and sink to port. Teak grates in shower.

Salon

- Teak cabinetry
- Solid teak parquet soles
- Window lined drapes
- L-shaped settee with storage below to starboard
- Lift-up straight settee (port) with storage below
- Bar cabinet with glass and bottle storage
- Clarion AM/FM/CD/satellite radio capable
- Surround sound speakers
- GB fixed teak table with 2 drop leafs
- Grand Banks reading light
- Teak overhead grab rail
- MarineAire air-conditioning: three zones with reverse-cycle heat
- Storage drawers under port and starboard salon entry steps

Galley

- Grunert refrigeration with temperature gauge
- Grunert freezer with temperature gauge
- 3 Burner propane cooktop with oven
- Stainless steel sink with single lever faucet
- Formica counters with pull out sink covers with built in cutting boards
- Microwave oven
- Electric exhaust fan with s/s hood over stove
- Pantry
- Abundant drawers and storage for plates/cups
- Solid teak parquet soles

Master Stateroom

- Island Queen centerline berth
- Teak bureau (4) drawers
- (5) Additional drawers under berth
- (6) Drawers bed table (port)
- Book shelf and additional storage under portside table

- (2) Drawers bed table (starboard)
- Beveled mirror
- Solid teak parquet sole
- Lined drapes
- (2) Large hanging lockers forward w/automatic lighting
- (2) GB reading lights
- Overhead lights
- Rear hatch w/screen
- MarineAire unit
- (3) Windows
- (4) 110 outlets
- 2 Large under floor storage lockers

Master Head (Functional Split Head)

- Vacuflush toilet
- Molded Corian sink and counter
- Single lever faucet
- Beveled mirror
- Solid teak parquet sole
- Drapes
- Teak towel bars
- Roomy reach-in cabinets and drawers
- Holding tank monitor
- 110 GFI
- Separate shower on starboard
- Teak grating sole
- Sump pump
- Port window, light and hatch

Guest Stateroom - Forward

- V-berth with filler for larger sleeping area
- (6) Drawers under berth
- Large hanging locker
- (2) GB chrome reading lights
- Overhead lights
- Overhead hatch
- MarineAir Unit
- Solid teak parquet sole
- Door to engine room
- Under floor storage locker
- Forward entrance compartment to anchor locker

Guest Head

- Vacuflush toilet
- Teak grate
- Beveled mirror
- Molded Corian sink and counter
- Single level faucet
- Wrap around shower
- Overhead lights
- Window with curtain
- Heat and air conditioning
- 110 GFI
- Roomy cabinets and drawers
- Sump pump

Flybridge and Upper Helm Electronics

- Stainless steel handrails
- Teak decks
- Bench seating with seat cushions and covers for seating
- GB table
- Sunbrella canvas Bimini
- Fore and aft facing bench seats with storage underneath
- L-settee with storage underneath
- Built in marine stereo speakers
- Ritchie Compass
- Trim tabs
- Glendinning synchronizer
- Morse engine controls
- 2011 Garmin 4208 multifunctional unit (chart, radar, sounder)
- Raymarine ST7002 autopilot
- Autohelm depth gauge
- 2012 West Marine vhf580 radio
- 2009 spotlight
- Windlass control station
- Bilge pump indicator lights
- VDO gauge package: voltmeter, oil pressure, water temp, tachometers

Lower Helm and electronics

- 2011 Garmin 4208 multifunctional unit (chart, radar, sounder)
- Autohelm ST7000 autopilot
- 2012 West Marine vhf580 radio
- Autohelm depth gauge
- Ritchie Compass
- Jabsco searchlight with helm control
- Glendinning synchronizer

- Morse engine controls
- Window wiper controls
- Tank tender gauge
- Windlass control station
- VDO gauge package: amp meter, voltmeter, oil pressure, water temp, tachometers
- Trim tab controls
- Horn, electric
- AC/DC panel
- Charles charging system
- Xantrex monitoring system

Deck and Hull

- Bow pulpit with stainless and teak rails
- Electric Windlass
- Mast with Boom
- 2011 Magma propane grill
- Foredeck windlass foot controls
- Raw water anchor washdown
- Teak swim platform
- Spreader lights from mast to cockpit
- 2 Anchors
- Emergency tiller
- Aft shower hookup
- 50 amp - TV + phone cables bow and stern
- Horn, electric

Electrical

- Westerbeke 8 Kw generator in soundshield - 769 hours
- Inverter system added in 2011
- Xantrex monitoring system added in 2011
- 12V DC Electrical Service
- 50A/240V AC Electrical Service
- Fore and Aft Shore Power Connections
- NEW 2016 3x8D and 1x4D engine start/house

Engine Room and Mechanical

- Twin 3116 CAT engines with 2365 hrs
- Twin Disc gears with 2.47:1 ratio
- MarineAir reverse cycle air conditioning

- Glendinning engine synchronizer
- Fire suppression system
- Racor fuel filters/water separators
- Automatic bilge pumps
- Fuel sight gauges for both tanks

Exclusions: Tender Wood Plate "Miss Blue" on transom Bag under aft bed

Исключения

При продаже яхты исключаются личные вещи владельца.

Отказ от ответственности

Компания предоставляет описание судна или яхты добросовестно, но не может гарантировать точность этой информации, а также не ручается за техническое состояние. Покупатель должен проинструктировать своих агентов или оценщиков исследовать представленную информацию более подробно, по собственному желанию. Продажа судна или яхты, изменение цены или снятие с продажи будет происходить без предварительного уведомления.

ФОТОГРАФИИ

Salon



Salon



Salon



Salon



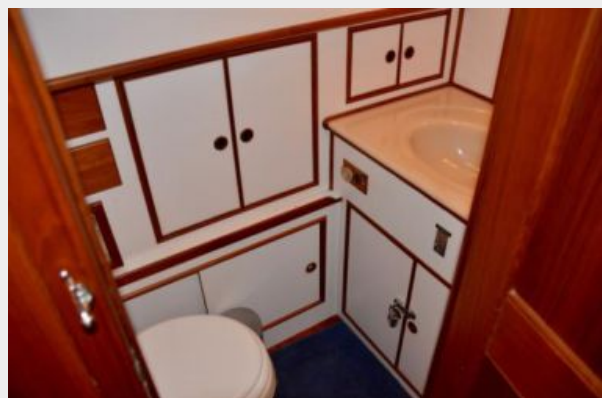
Master Stateroom



Master Stateroom



Master Head



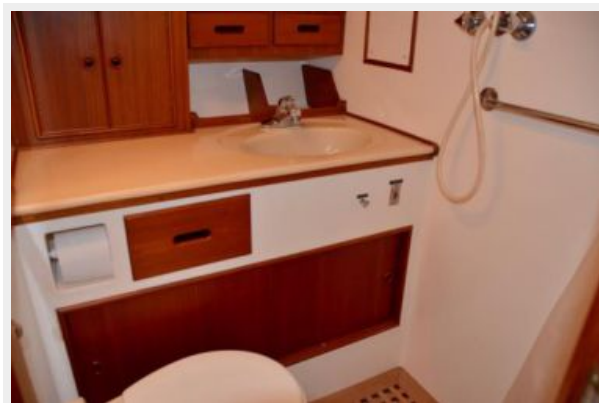
Guest Stateroom



Guest Stateroom



Guest Head



Lower Helm



Lower Helm



Seating



Upper Helm



Upper Helm



Electric Boom



Engine Room



Engine Room



Engine Room



Engine Room

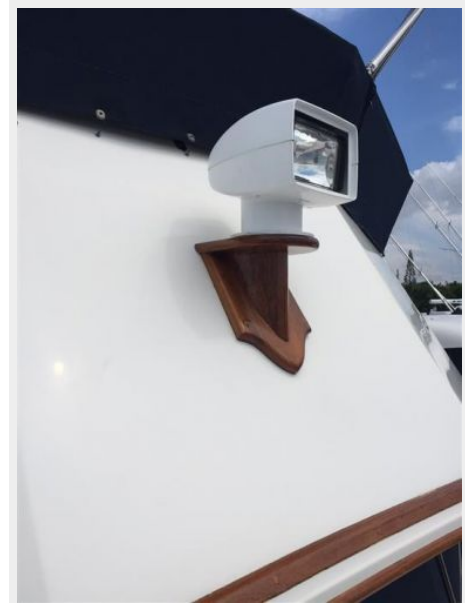
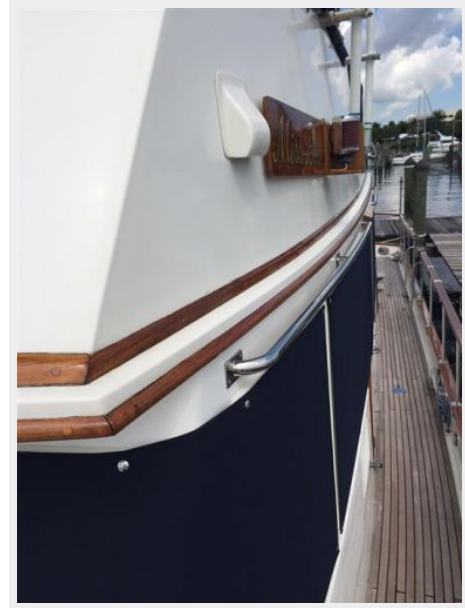


Engine Room



Engine Room





Starboard

Stern



КОНТАКТЫ

Андрей Шестаков (Andrey Shestakov) – ведущий яхтенный брокер отдела продаж яхт и судов компании Shestakov Yacht Sales Inc. Официальный представитель Shestakov Yacht Sales Inc. для русскоговорящих клиентов в центральном офисе компании в Майами/Форт Лодердейл/Флорида/США.

Контактная информация

Email: andrey@shestakovyachtsales.com

Web: shestakovyachtsales.com

Телефоны

Краснодарский край: **+7(918)465-66-44**

США, Майами, Флорида: **+1(954)274-4435**

Время работы

Понедельник – Суббота: **9:00 - 21:00**
EDT

Воскресенье: **Закрито**

Адрес



Harbour Towne Marina, 850 NE 3rd St,
STE 213, Dania, FL 33004