

## 55' VIKING — VIKING



**Судостроитель:** VIKING

**Год постройки:** 2015

**Модель:** Катер для спортивной рыбалки

**Цена:** ЦЕНА ЯХТЫ ПО ЗАПРОСУ

**Местонахождение:** United States

**Длина общая:** 55' 0" (16.76m)

**Ширина:** 17' 9" (5.41m)

**Макс. осадка:** 5' 1" (1.55m)

Купить 55' Viking — VIKING а также выбрать подходящую вам яхту из нашего каталога яхт вам поможет опытный яхтенный брокер Андрей Шестаков. На сегодняшний день компания Shestakov Yacht Sales Inc. имеет большое количество яхт в собственном списке продаж, а также тесно сотрудничает со всеми крупными яхтенными производителями по всему миру.

Для того чтобы купить яхту 55' Viking — VIKING а также проконсультироваться по любому вопросу связанному с покупкой, продажей, чартером яхт позвоните по телефону **+7(918)465-66-44**.

# ОГЛАВЛЕНИЕ

---

ОГЛАВЛЕНИЕ	2
ХАРАКТЕРИСТИКИ	6
Основная информация	6
Размеры	6
Скорость, вместимость и масса	6
Размещение	6
Корпус и палуба	6
Информация о двигателе	7
ПОДРОБНОЕ ОПИСАНИЕ	8
Accommodations	8
Custom Decor Package	8
Salon	8
Galley & Dinette	9
Companionway	9
Master Stateroom	10
Master Head	10
Forward Stateroom	10
Port Stateroom	11
Guest Head	11
Cockpit	11
Flybridge	12
Electronics & Navigational Equipment	13
Fishing Equipment	13
Engine Room & Mechanical Equipment	14
Notable Options & Upgrades	15
Исключения	15
Отказ от ответственности	15
ФОТОГРАФИИ	16

Salon	16
Salon	16
Salon	16
Salon	16
Galley	16
Galley	16
Galley	17
Dinette	17
Laundry Center	17
Dinette	17
Master Stateroom	18
Master Stateroom	18
Master Stateroom	18
Master Stateroom	18
Master Head	18
Master Head	18
Forward Stateroom	19
Forward Stateroom	19
Port Stateroom	19
Port Stateroom	19
Guest Head	20
Guest Head	20
Guest Head	20
Guest Head	20
Flybridge	21
Flybridge	21
Flybridge	21
Flybridge	21
Flybridge	21

---

Flybridge	21
Flybridge Seating	22
Flybridge Seating	22
Cockpit	22
Cockpit	22
Cockpit	22
Cockpit	22
Cockpit	23
Cockpit	23
Engine Room	23
Engine Room	23
Engine Room	23
Engine Room	23
Engine Room	24
Engine Room	24
Engine Room	24
Engine Room	24
Engine Room	24
Engine Room	25
Engine Room	25
55' 2016 Viking	25
55' 2016 Viking	25
55' 2016 Viking	25
55' 2016 Viking	25
Bow Profile	26
Stern Profile	26
<b>КОНТАКТЫ</b>	<b>27</b>
Контактная информация	27
Телефоны	27
Время работы	27

---

---

Адрес

27

# ХАРАКТЕРИСТИКИ

## Основная информация

**Тип судна:** Катер для спортивной рыбалки

**Подкатегория:** Convertible

**Модельный год:** 2016

**Год постройки:** 2015

**Страна:** United States

**Открытая палуба мостика:** Да

**Кубрик:** Да

## Размеры

**Длина общая:** 55' 0" (16.76m)

**Ширина:** 17' 9" (5.41m)

**Макс. осадка:** 5' 1" (1.55m)

## Скорость, вместимость и масса

**Водоизмещение:** 77700 Pounds

**Вместимость воды:** 225 Gallons

**Вместимость сточного бака:** 100 Gallons **Объем топливного бака:** 1605 Gallons

## Размещение

**Всего кают:** 3

**Всего ком. состава:** 2

## Корпус и палуба

**Материал корпуса:** Fiberglass

## Информация о двигателе

---

**Двигатели:** 2

**Производитель:** MAN

**Модель:** V12

**Тип двигателя:** Inboard

**Тип топлива:** Diesel

# ПОДРОБНОЕ ОПИСАНИЕ

---

## Accommodations

---

This beautiful 55 Viking features a 3 stateroom 2 head layout. The main deck features access to the salon from the cockpit and mezzanine through an electric door to starboard. Forward of the salon is the galley with an island counter/bar forward and starboard with an L-shaped lounge to port in the dinette. The master is amidships to starboard with the forward stateroom featuring the VIP crossover option and aft to port is a guest stateroom with twin lower berths fore and aft. The washer/dryer is to starboard in the companionway.

## Custom Decor Package

---

Viking's craftsmanship and signature joinery work is evident throughout the interior and features teak that is varnished with a high gloss finish for a rich ambience. Rich details and textures compliment the hand finished teak joinery work throughout the salon, galley, and interior spaces. LED overhead and indirect rope lighting through the salon combined with silhouette blinds offer a relaxing and comforting mood for everyone onboard.

- Custom carpet throughout interior
- Custom wallpaper material
- Custom Amtico flooring
- Brushed nickel hardware throughout
- Brushed nickel coverplates for switches and receptacles throughout
- (2) Bar stools in Ultraleather without backs
- Sofa upgrade to Dewberry style for most efficient storage
- Helm and companion chairs, bridge cushions and mezzanine cushions in Ultraleather Brisa Distressed Outdoor Buckskin
- Custom headliner material throughout
- Teak valences

## Salon

---

This salon has nearly 18 feet of beam and provides a space and feeling of a much larger yacht. To port is an L-shaped lounge seating with underneath storage situated perfectly for viewing the large flat screen television to port.

- Full canvas carpet runner
- Custom Amtico flooring at salon entrance
- Teak trim where Amtico floor meets carpet
- Electric salon entry door
- Teak valences



- Flat screen TV with Bose sound bar - Upgrade to 46"
- SAT TV Receiver
- Clear icemaker
- Dimmer on overhead LED lights recessed in headliner
- Indirect rope lighting behind valences
- Air conditioning with reverse cycle heat with temperature control
- Silhouette blinds
- Hi-Lo Mappa burl cocktail table with high gloss finish
- High gloss finished teak throughout
- Home theater system
- Teak cabinetry and drawers with finished maple interior
- Teak strips in headliner
- Salon camera

## Galley & Dinette

---

- Sub Zero refrigeration and freezer units housed in island
- 110v Outlet
- Three-burner range
- Garbage disposal
- Custom Amtico flooring
- Satin nickel faucet
- Teak upper & lower galley cabinets with finished maple interior
- Overhead LED lighting
- Microwave/convection oven
- Dinette with removable cushions and storage underneath
- Dinette seating for four
- Mappa Burl dinette with high gloss finish

## Companionway

---

- Stackable front loading washer with dryer behind teak door to starboard
- Linen locket
- Costa made canvas carpet runner with step covers
- Awlgrip bilge areas with access hatches
- Central vacuum unit connection with accessories
- Carpeted flooring and steps
- Overhead LED lights recessed in headliner
- Vertical teak strips
- Custom headliner and wall panels

---

## Master Stateroom

---

- Queen berth with walk-around fore & aft with upgraded pillow top
- Custom quilted bedspread with pillow shams
- (2) Large drawers under bed
- Teak end table tops
- Dimmer on overhead LED lights
- Flat screen TV / SAT TV
- Fusion stereo
- Air conditioning with reverse cycle heat with temperature control
- Entry credenza with drawer storage
- Custom carpet
- Hanging locker with maple interior
- Custom headboard
- Custom headliner & wallpaper
- Overhead LED lights
- Indirect rope lighting from underneath bed platform
- Overhead reading lights

---

## Master Head

---

- Teak face on lower vanity
- Mirror around upper vanity
- Granite countertop
- Custom Amtico flooring
- Brushed nickel faucet and shower fixtures
- Brushed nickel towel bars and rings
- Sealand head system with overboard discharge and holding tank
- Single piece glass shower door with satin nickel hardware
- Fiberglass stall shower with satin nickel shower fixtures
- Towel bars and rings in satin nickel
- Exhaust fan with vent soffit
- Overhead LED lights recessed in soffit and in ceiling

---

## Forward Stateroom

---

- Accessed from companionway
- Crossover berths
- Custom mattress
- Dimmers on overhead LED lights
- Air Conditioning with reverse cycle heat with temperature control
- Hanging locker with maple finished interior
- Custom headliner & wall panels

- Overhead deck hatch
- Samsung TV with SAT TV
- Fusion stereo
- Private access to guest head

---

## Port Stateroom

---

- Side-by-side berths with handcrafted innerspring mattress
- Quilted bedspreads with pillow shams
- Hanging locker
- Carpeted flooring
- Storage cabinet above outboard bunk
- Storage drawer located under hanging locker
- Dimmer on overhead LED lights
- Air conditioning with reverse cycle heat with temperature control
- Samsung flat panel TV
- Fusion stereo

---

## Guest Head

---

- Access from companionway and from forward and port guest staterooms
- Mirror around upper vanity
- Teak face on lower vanity
- Granite countertop
- Custom Amtico flooring
- Satin nickel faucet and shower fixtures
- Brushed nickel towel bars and rings
- Sealand head system with overboard discharge and holding tank discharge
- Exhaust fan
- Amtico flooring
- Overhead LED lights recessed in soffit and in ceiling

---

## Cockpit

---

The flybridge overhang provides shade and spray protection to the mezzanine, which houses freezer and other storage. The 151 square foot cockpit is complete with everything needed to fish, whether competitively or for fun. In the center of the custom teak deck is a Release Marine battle saddle with custom table.

- Mezzanine cockpit
- Live well in sole
- Transom coaming with lift gate and door

- Garmin 8208 in side haunch
- Awlgrip lazarette
- Y-valve for fresh and saltwater washdown
- Freezer storage in mezzanine seat
- Fish box with split lid
- Storage locker under port and starboard coamings
- (2) Cablemaster shore cords
- Ice machine discharge
- (2) 24v Outlets forward under coaming, one on each side
- Seawater supply and fitting for additional on-deck live well
- Custom tri-color lights; red, white, and blue in cockpit overhang
- Custom teak sole and mezzanine
- Dockside water connection with pressure reducing valve in starboard side locker under gunwale
- Engine room access via hatch and ladder
- Freshwater wash down located in side locker under gunwhale
- Ladder to flybridge, one-piece anodized aluminum with custom teak steps
- Lazarette hatch with access to steering, trim tabs, drain pumps
- Recessed in-deck fish box
- Recessed in-deck storage box
- Refrigerated drink box under mounted in salon step for direct access from cockpit
- Rod holders
- Side locker with storage for gaffs accessories located in port side locker hinged door
- Stainless steel cleats and recessed hawse pipes
- Quick disconnect for oil change system

## Flybridge

---

The center console helm provides 360° visibility and superb built-in electronics stowage above and more stowage below. Deep compartments provide room for the custom AME package as well as accessory switches for yacht systems. Additional electronics are mounted in the overhead along with electric teaser reels. Single-lever controls deliver silky smooth response and the DC assisted hydraulic steering and the teak helm pod adds a custom touch. Two custom Release Marine helm chairs, and three comfortable lounges with storage below invites guests to relax and enjoy the ride. Forward, there is a top loading freezer, a refrigerated drink box cooler and a freshwater outlet.

- Release Marine helm chairs
- Electronic single-lever controls for helm pod with bow thruster button in handles
- Release teak helm pod
- Electronic trolling valves
- Recessed electronics boxes
- Refrigerated drink box

- Bridge freezer box
- Fresh water outlet
- Bow thruster
- Custom cushions in Ultraleather Buckskin
- Hinged lounge seating to port, starboard, and forward end of helm console, for access to storage underneath
- Recessed electronics boxes in console with acrylic fitted lids with gaskets and stainless steel gas pistons
- Under helm access with lights and storage space
- Center console walk around helm

## Electronics & Navigational Equipment

---

- Furuno 96' mile Navnet 3D radar
- Furuno Navnet 3D plotters
- Garmin GPS map plotter
- Furuno Navnet color sounder
- Furuno RD33 data organizer
- Furuno FCV 1200 with 50/200 Hz dual frequency transducer
- Garmin GHP12 Autopilot
- (2) ICOM M604 VHF radios
- KVH HDT Satellite TV with all staterooms having DirecTV receivers
- 12" Garmin with chirp transducer in dropdown box
- SEAKEEPER Gyro control
- Garmin 8208 Located in cockpit
- Sonar and Sirius weather capability
- Engine room camera system with (3) cameras
- Upgraded Fusion stereo with JL speakers on flybridge & in cockpit with Sirius radio
- Lumishore tricolor lighting system
- AIS

## Fishing Equipment

---

- HD Triple spreader outriggers
- Release Marine battle saddle chair with custom table
- Trolling valves
- Single-lever electronic controls
- (6) Rod holders on aft bridge rail
- Transom door with gate
- 24V Outlets port and starboard
- Fresh water washdown
- Saltwater washdown
- In-deck fish box

- Upper & lower mezzanine step boxes are refrigerated
- Live well in cockpit sole

## Engine Room & Mechanical Equipment

---

- MAN V12 1550HP CRM
- 21.5 kW Onan generator Port, 400 hours
- 13.5 kW Onan generator Starboard, 430 hours
- 700 GPD Watermaker with auto backflush
- 24v Fuel priming pumps
- Generator gas-water separator for standard generator
- Awlgrup brass thru-hulls & sea strainers in engine room & forward bilges
- Snow white fuel filters
- Line from oil change system to cockpit dockside box
- 110v Outlet on aft bulkhead at entranceway
- All pumps snow white, other than fresh water pump
- Backup pump for seawater system plumbed in parallel
- Tee in dockside water manifold to fill water tank from cockpit
- Air conditioning direct expansion zoned with reverse cycle heat for complete climate control throughout the interior and with individual temperature controls fro staterooms and salon
- Bilge pumps with additional clean out pumps in keel area linked into monitoring system and connected to float switches for automatic and manual operation
- "Delta T" engine room ventilation system with supply and discharge fans for proper fresh water supply and water intrusion suppression
- External sea strainers for main engine pick ups
- Fire suppression system, automatically or manually operated and tied into main engine and generator ignition systems with override
- Freshwater supply in engine room for general maintenance and cleaning
- Fuel and oil lines, flexible, steel reinforced USCG approve, aircraft type
- Fuel priming pumps, electric 24V DC
- Fuel transfer system, electric 24V DC
- Integrated engine mounting system for efficient transfer of energy to drive train system
- Oil changing system, gear type pump for main engines, transmissions, and generator
- Racor fuel/water separators for main engines and generator, clear bowl type, top loading for easier maintenance
- 24V DC Ship's service throughout
- 110V Outlet in engine room on aft bulkhead
- Anchor light and navigation lights
- (2) Independent batteries 24V mounted in fiberglass storage box
- (2) Battery chargers with thermal cutoff and switching system for complete integration
- Battery distribution panel with battery cutoff and charging system breakers
- Battery parallel system for main engines and generator start
- Bonded electrical system with ground plate

- Engine room lights, AC and DC, with switch at engine room entrance

## Notable Options & Upgrades

---

- Custom teak cockpit sole and mezzanine
- Black mask
- Release teak helm pod
- Release helm and companion seats with footrests
- (4) Underwater lights
- Custom lighting in flybridge overhang and cockpit
- Refrigerated flybridge drink box
- Flybridge freezer
- Refrigerated drink box in salon entry step
- Freezer in mezzanine seat
- Additional fuel tank - 205 gallons
- Full salon carpet runner
- Carpet runner for companionway and steps
- Television in each stateroom with SAT Receivers
- Ultraleather cushions on flybridge including helm and companion seating
- Freshwater washdown in anchor locker and bridge
- Windlass with stainless fairlead

## Исключения

---

При продаже яхты исключаются личные вещи владельца.

## Отказ от ответственности

---

Компания предоставляет описание судна или яхты добросовестно, но не может гарантировать точность этой информации, а также не ручается за техническое состояние. Покупатель должен проинструктировать своих агентов или оценщиков исследовать представленную информацию более подробно, по собственному желанию. Продажа судна или яхты, изменение цены или снятие с продажи будет происходить без предварительного уведомления.

# ФОТОГРАФИИ

Salon



Salon



Salon



Salon



Galley



Galley





**Galley**



**Dinette**



**Laundry Center**



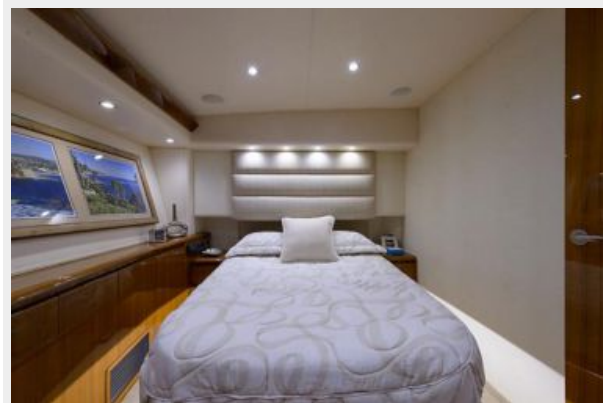
**Dinette**



**Master Stateroom**



**Master Stateroom**



**Master Stateroom**



**Master Stateroom**



**Master Head**



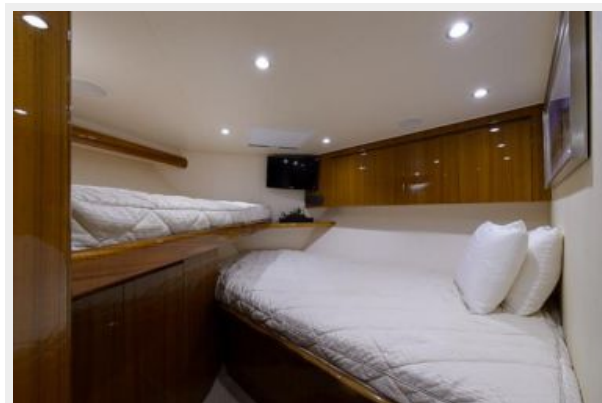
**Master Head**



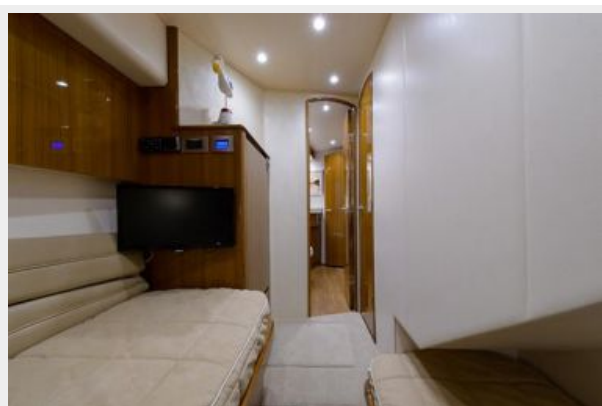
**Forward Stateroom**



**Forward Stateroom**



**Port Stateroom**



**Port Stateroom**



**Guest Head**



**Guest Head**



**Guest Head**



**Guest Head**



**Flybridge**



**Flybridge**



**Flybridge**



**Flybridge**



**Flybridge**



**Flybridge**



**Flybridge Seating**



**Flybridge Seating**



**Cockpit**



**Cockpit**



**Cockpit**



**Cockpit**



Cockpit



Cockpit



Engine Room



Engine Room



Engine Room



Engine Room



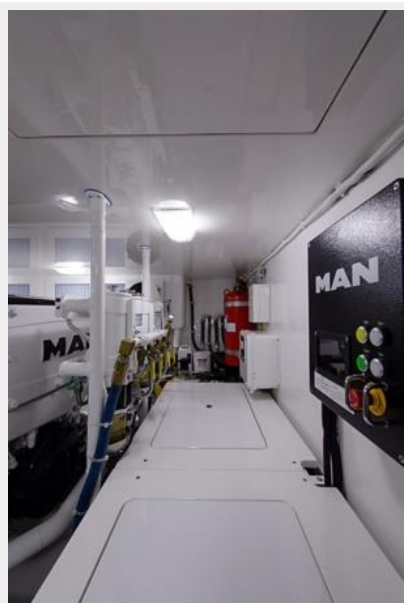
**Engine Room**



**Engine Room**



**Engine Room**



**Engine Room**





**Engine Room**



**Engine Room**



**55' 2016 Viking**



**55' 2016 Viking**



**55' 2016 Viking**



**55' 2016 Viking**



**Bow Profile**



**Stern Profile**



# КОНТАКТЫ

---

Андрей Шестаков (Andrey Shestakov) – ведущий яхтенный брокер отдела продаж яхт и судов компании Shestakov Yacht Sales Inc. Официальный представитель Shestakov Yacht Sales Inc. для русскоговорящих клиентов в центральном офисе компании в Майами/Форт Лодердейл/Флорида/США.

## Контактная информация

---

Email: [andrey@shestakovyachtsales.com](mailto:andrey@shestakovyachtsales.com)

Web: [shestakovyachtsales.com](http://shestakovyachtsales.com)

## Телефоны

---

Краснодарский край: **+7(918)465-66-44**

США, Майами, Флорида: **+1(954)274-4435**

## Время работы

---

Понедельник – Суббота: **9:00 - 21:00**  
EDT

Воскресенье: **Закрито**

## Адрес

---



Harbour Towne Marina, 850 NE 3rd St,  
STE 213, Dania, FL 33004