

OUTRAGE — SCOPINICH



Builder: SCOPINICH

Year Built: 2005

Model: Sport Fisherman

Price: PRICE ON APPLICATION

Location: United States

LOA: 35' 0" (10.67m)

Beam: 12' 0" (3.66m)

Max Draft: 3' 6" (1.07m)

Cruise Speed: 33 Kts. (38 MPH)

Max Speed: 37 Kts. (43 MPH)

Our experienced yacht broker, Andrey Shestakov, will help you choose and buy a yacht that best suits your needs **Outrage — SCOPINICH** from our catalogue. Presently, at Shestakov Yacht Sales Inc., we have a wide variety of yachts available on our sale's list. We also work in close contact with all the big yacht manufacturers from all over the world.

If you would like to buy a yacht **Outrage — SCOPINICH** or would like help answering any questions concerning purchasing, selling or chartering a yacht, please call **+1(954)274-4435**

TABLE OF CONTENTS

TABLE OF CONTENTS	2
SPECIFICATIONS	3
Overview	3
Basic Information	3
Dimensions	3
Speed, Capacities and Weight	3
Accommodations	3
Hull and Deck Information	4
Engine Information	4
DETAILED INFORMATION	5
Overview	5
V Berth Forward	5
Cockpit	6
Bridge	6
Electronics	7
Engine Room	7
Electrical Equipment	8
Exclusions	9
Disclaimer	9
PHOTOS	10
CONTACTS	17
Contact details	17
Telephones	17
Office hours	17
Address	17

SPECIFICATIONS

Overview

Economical CAT power with a cruise of 33 kts. 400 gallons of fuel, rigged for fishing. V-berth forward, galley to stbd and 1 head. Teak bridge deck and cockpit. Comfortable ride and a proven fish raiser!

Basic Information

Category: Sport Fisherman

Sub Category: Express

Model Year: 2005

Year Built: 2005

Country: United States

Vessel Top: Full / Tuna Tower

Dimensions

LOA: 35' 0" (10.67m)

Beam: 12' 0" (3.66m)

Max Draft: 3' 6" (1.07m)

Speed, Capacities and Weight

Cruise Speed: 33 Kts. (38 MPH)

Max Speed: 37 Kts. (43 MPH)

Displacement: 14500 Pounds

Water Capacity: 40 Gallons

Fuel Capacity: 400 Gallons

Accommodations

Total Cabins: 1

Total Heads: 1

Hull and Deck Information

Hull Material: Fiberglass

Engine Information

Engines: 2

Manufacturer: Caterpillar

Model: 3126

Engine Type: Inboard

Fuel Type: Diesel

DETAILED INFORMATION

Overview

Galley to stbd with corian countertop

Samsung Microwave/Convection

Cabinet storage overhead the galley

Uline Refrigerator/freezer

Bank of (3) teak drawers with brushed nickel hardware

Teak and holly flooring throughout

One head to stbd with VacuFlush head

Awlgrip walls in head

Corian countertop

Awlgrip cabinets over top of sink

(2) cabinets underneath

Overhead 12 volt lighting

To port - Dinette with a raised actuated teak table that pushes down into a second bed

Marine air systems air conditioning display in salon

Marine air condition A/C system

Teak steps leading to salon are hinged for access to storage

V Berth Forward

V Berth forward with storage underneath

Rod storage overhead

(4) teak cabinets with brushed nickel hardware over top of v berth

Bomar hatch

Wallpaper textured walls

Teak interior

Cedar lined closet at foot of V berth

Cabinet storage underneath

Cockpit

Corner house pipes

4 Lee rod holders in covering boards

Stainless cleats

Transom door

Teak cockpit and covering boards

Lazarette access

In deck fishbox to stern

Pipewelders Towers

Rupp outriggers

(2) spreader outriggers

Fresh and salt water washdown

Under gunnel gaff and mop access

(3) sets of tackle drawers on port side

Standup live well

Bridge

Teak deck

Bench seating to port and starboard with access to rod storage

Bose surround sound stereo system

Actuated electronics panel

Bridge deck actuates for engine room access

3sided

Strataglass enclosure

Recessed teaser reels

Non skid hardtop

Engine room access forward of helm

Clarion stereo system with salon speakers

Clarion CD player

Overhead 12 volt lighting with 3 sets of rocker switches for dimming

Electric panel on salon wall

Teak center helm pod

Video gauges

Single lever controls

Glendenning controls with trolling valve

Release Marine bar stool style helm chair with teak footpad

Release Marine rocket launcher with drawer

Electronics

Simrad Autopilot

Simrad OP40 plotter/radar/sounder with 17" Simrad monitor

(2) Icom 502 VHF's

Richie Compass

Overhead 12volt lighting

Engine Room

Electronic engine room access under hydraulic actuated teak deck

(2) 3126 Caterpillar engines with 420 HP each

Phazor generator (887 hours)

Optima batteries

Oil exchanger change system

Fireboy fire system

SureFlow fresh water pump

SeaLand holding tank with pump out system

Racor 900FH fuel separator system

Atlantic Marine Products hot water heater

MDP battery charger (new in 2014)

Fuel capacity 400 gallons

Water capacity 40 gallons

Baitmaster SureFlow live well pump

SureFlo Aqua King water pump

Battery parallel and shut off system

Teak and holly flooring in engine room

Caterpillar transmission

Electrical Equipment

Phasor 5KW generator (178 hrs)

AC/DC electrical panel

45 amp Sentry automatic battery charger

3 bank battery bank

Battery parallel switch

Battery switches

Battery monitor indicator

Bonded electrical system

12V engine room lights

12V cabin lights

110 V dual receptacles

30 amp shore power with 50 ft cord

Exclusions

Owner's personal belongings.

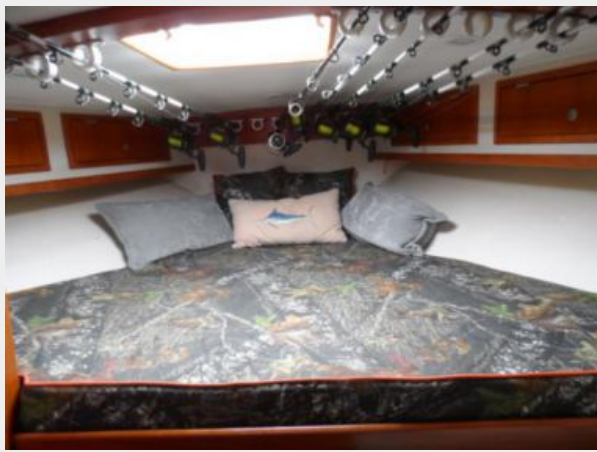
Disclaimer

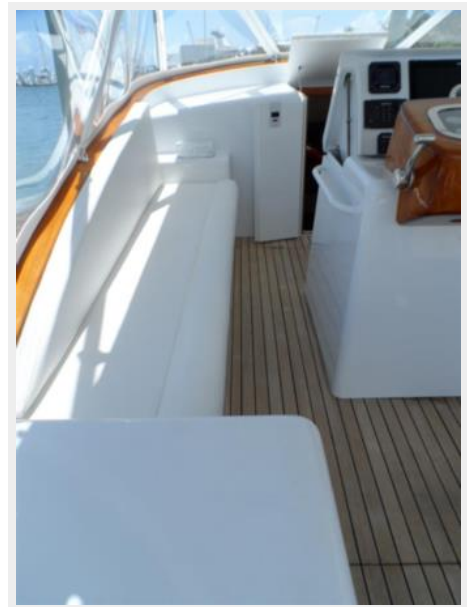
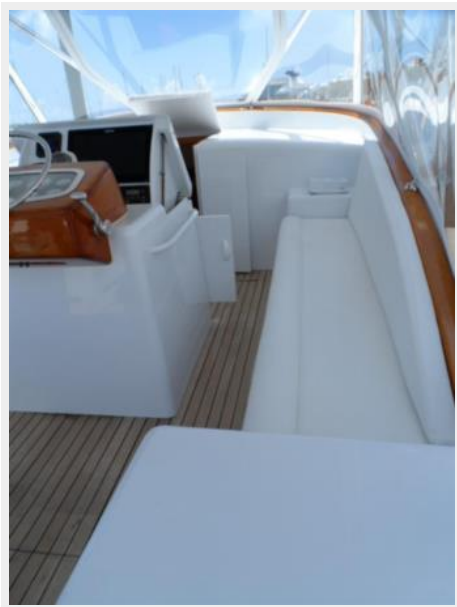
The Company offers the details of this vessel or yacht in good faith but cannot guarantee or warrant the accuracy of this information nor warrant the condition of the vessel. A buyer should instruct his representatives, agents, or his surveyors, to investigate such details as the buyer desires validated. This vessel or yacht is offered subject to prior sale, price change, or withdrawal without notice.

PHOTOS

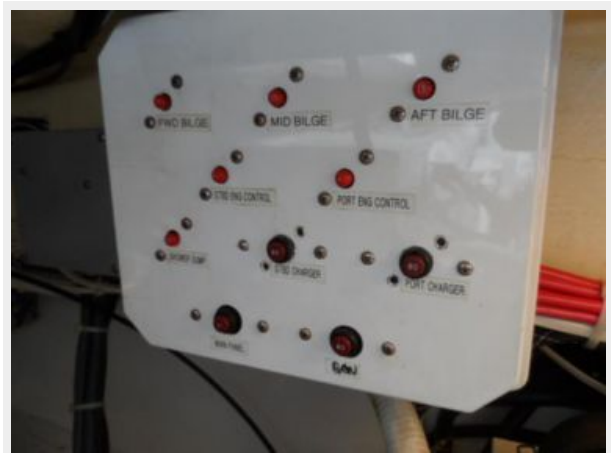














CONTACTS

Andrey Shestakov, leading yacht broker of the sales department of Shestakov Yacht Sales Inc. Shestakov Yacht Sales Inc., the official representative of the Miami/Fort Lauderdale FL headquarters.

Contact details

Email: andrey@shestakovyachtsales.com

Web: shestakovyachtsales.com/en/

Telephones

USA: +1(954)274-4435

Office hours

Monday – Saturday: **9:00 - 21:00** EDT

Sunday: **closed**

Address



Harbour Towne Marina, 850 NE 3rd St,
STE 213, Dania, FL 33004